

Mekong Malaria Elimination Programme

Epidemiology summary

Volume 25
January–March 2024



2024 GMS data at a glance (Jan–Mar)*

GMS: Cambodia, Lao People's Democratic Republic, Myanmar, Thailand, Viet Nam, Yunnan (China)



22 632
cases



1 198 626
tests
conducted

21%

Tests decrease
compared to
the same period
in 2023

28%

Cases decrease
compared to the
same period in
2023



50%

P. falciparum +
mixed cases
decrease compared
to the same period
in 2023

23%

P. vivax cases
decrease
compared to the
same period in
2023

2024 Quarter 1 overview

In Jan–Mar 2024, Greater Mekong subregion (GMS) countries reported **22 632** malaria cases.

Cambodia

Cambodia reported 176 cases, a 64% decrease compared to the same time period in 2023. *P. falciparum* + mixed cases and *P. vivax* constituted 1% and 92% of cases, respectively.

China (Yunnan Province)

Yunnan reported 96 cases. Among those, no indigenous cases were reported. *P. falciparum* + mixed cases and *P. vivax* constituted 0% and 99% of cases, respectively.

Lao People's Democratic Republic

Lao People's Democratic Republic reported 72 cases, a 57% decrease compared to the same time period in 2023. *P. falciparum* + mixed cases and *P. vivax* constituted 33% and 67% of cases respectively.

Myanmar

Myanmar reported 19 819 cases of which 14% were *P. falciparum* + mixed cases and 86% were *P. vivax*. It should be noted that only partial data was available for Myanmar during this period.

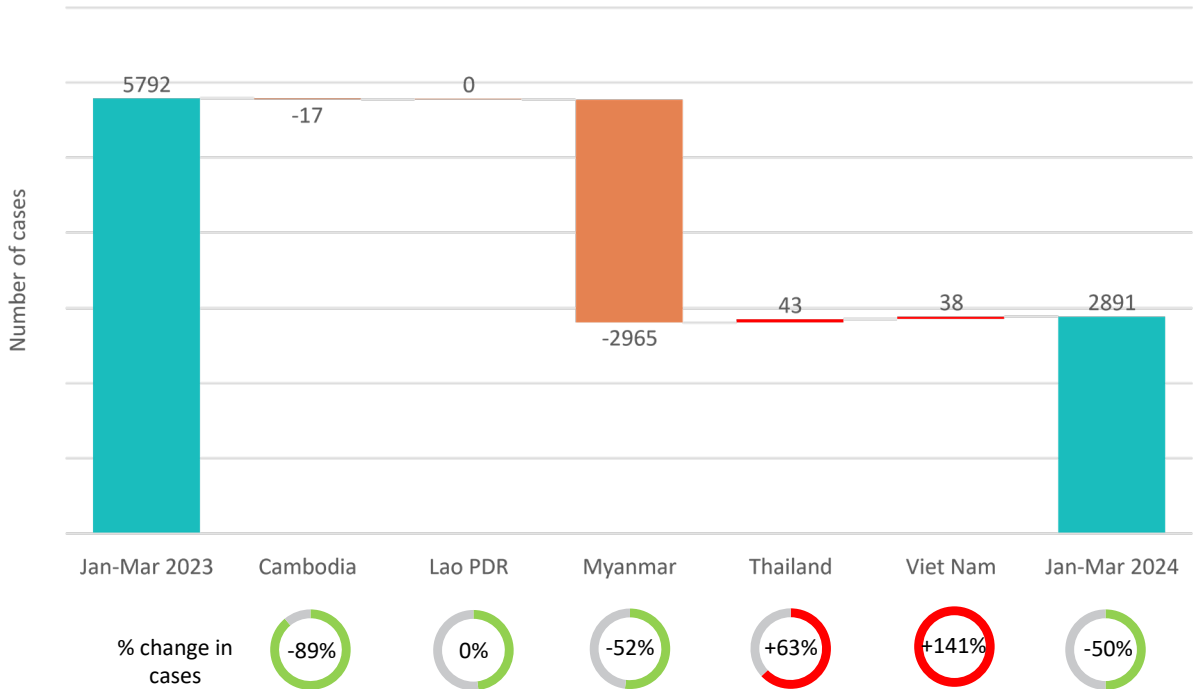
Thailand

Thailand reported 2369 cases, a 8% increase compared to the same time period in 2023. *P. falciparum* + mixed cases and *P. vivax* constituted 5% and 93% of cases, respectively.

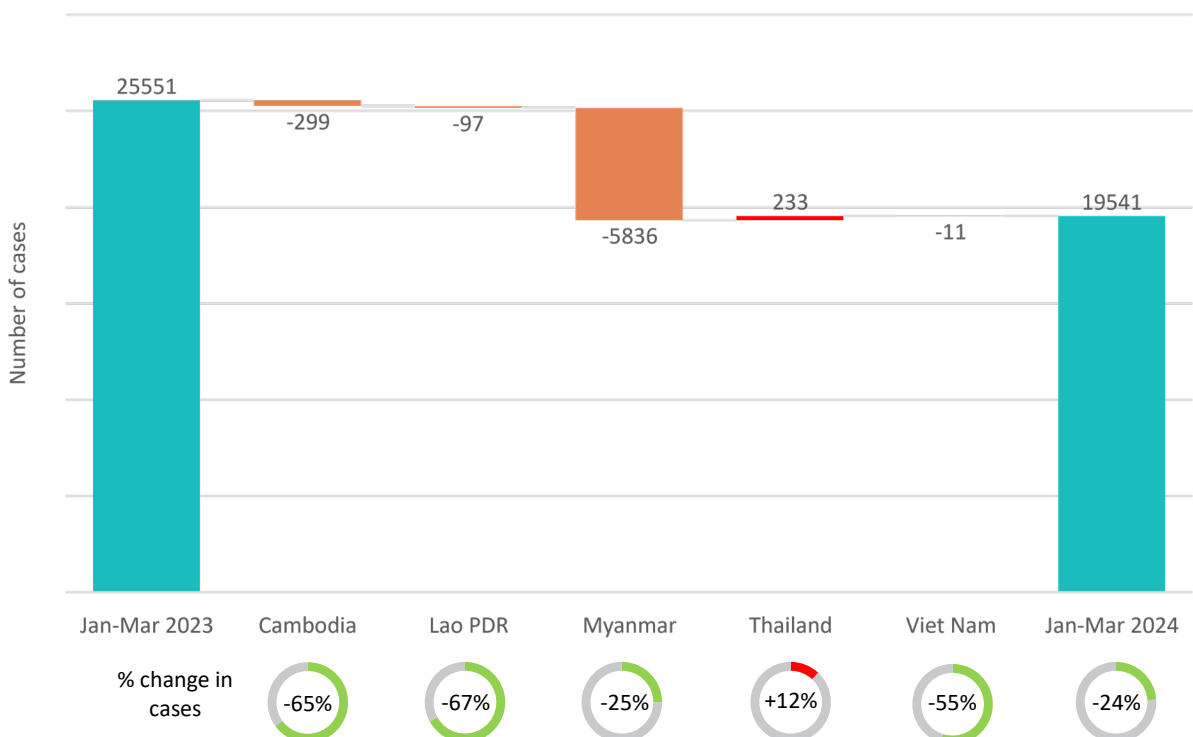
Viet Nam

Viet Nam reported 100 cases, 113% increase compared to the same time period in 2023. *P. falciparum* + mixed cases, *P. vivax* and other species constituted 65%, 9% and 26% of cases, respectively.

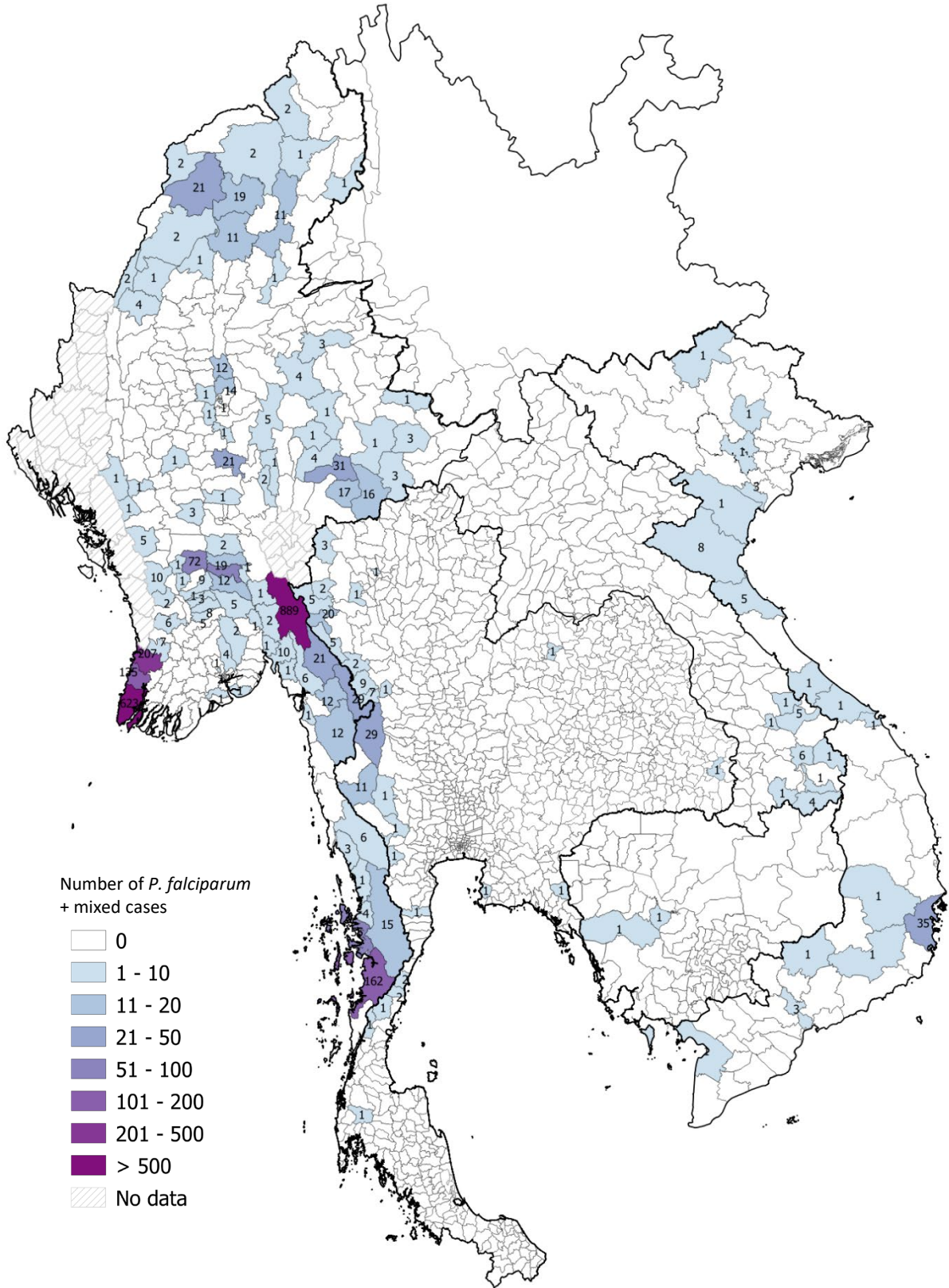
Changes in *P. falciparum* + mixed cases in the GMS from Jan–Mar 2023 compared to Jan–Mar 2024



Changes in *P. vivax* cases in the GMS from Jan–Mar 2023 compared to Jan–Mar 2024



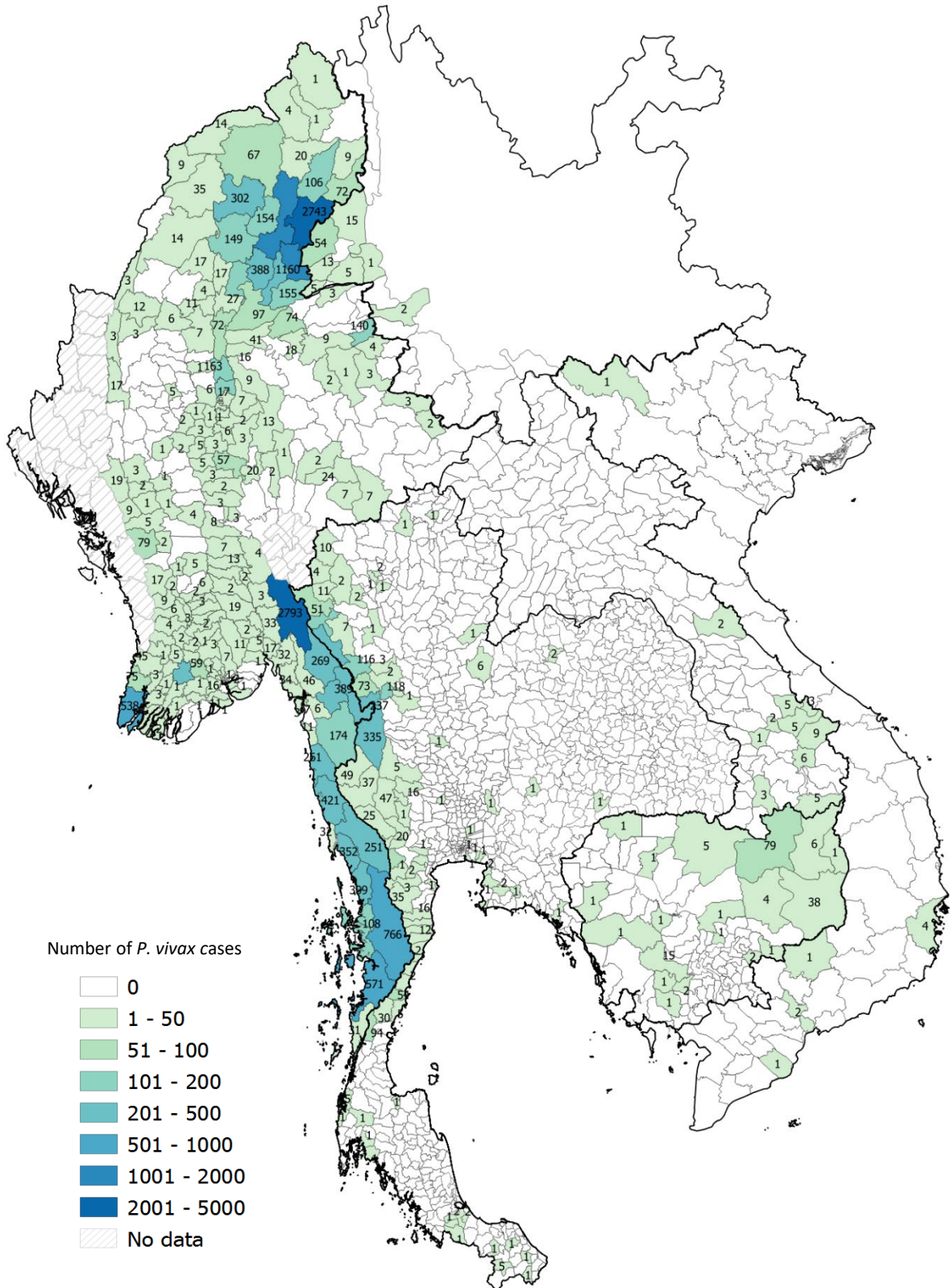
Regional map of *P. falciparum* + mixed cases by district (Jan–Mar 2024)*



* Data from Viet Nam is at the provincial level.

Subnational administrative boundaries for Lao People's Democratic Republic, Myanmar, Thailand and Viet Nam: <https://data.humdata.org/>. Licensed under the [CC BY 4.0](https://creativecommons.org/licenses/by/4.0/) international licence. WHO has adapted the maps by colouring the shapefiles to show country data. Subnational administrative boundaries for Cambodia: Department of planning and health information of the Ministry of Health.

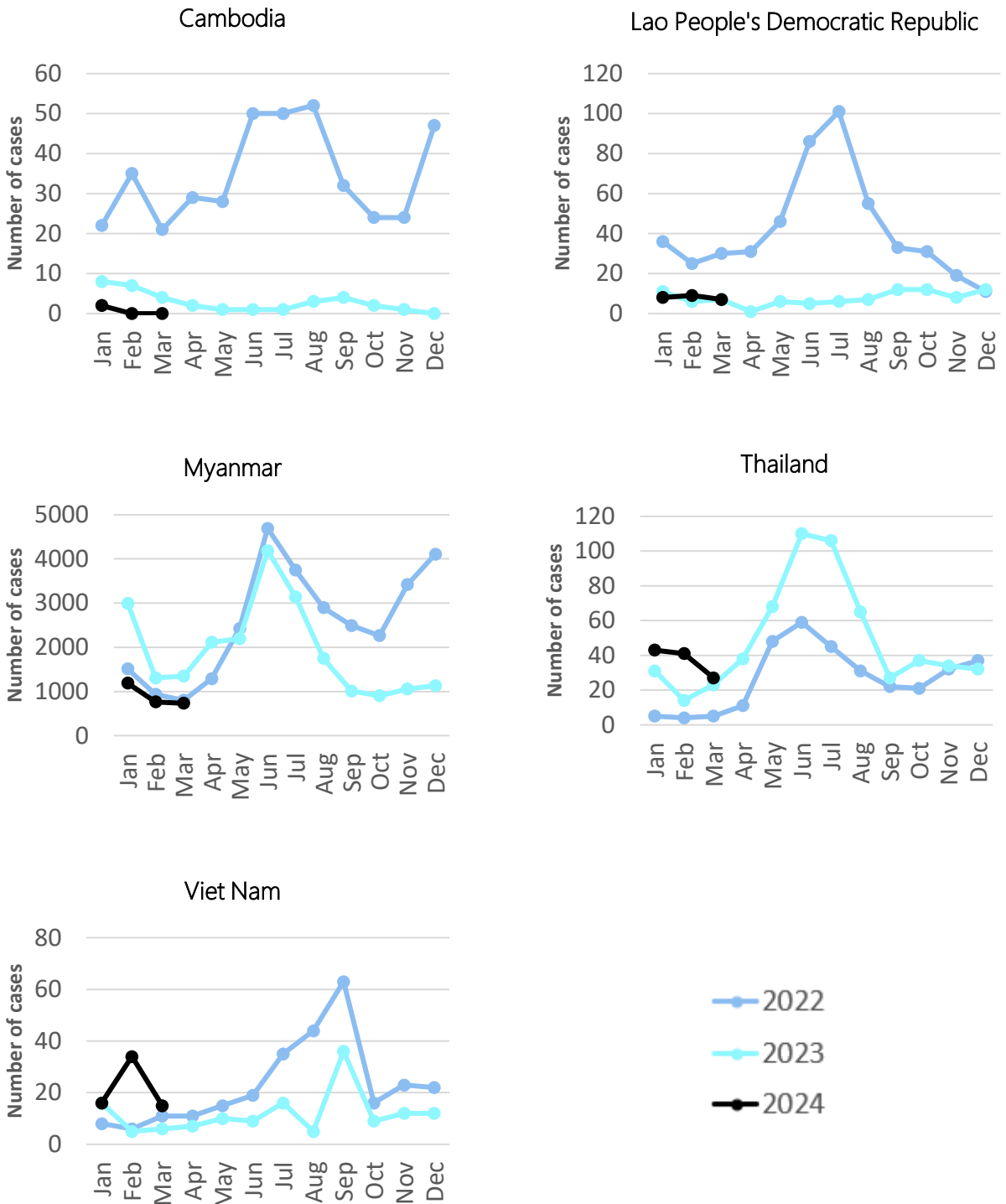
Regional map of *P. vivax* cases by district (Jan–Mar 2024)*



* Data from Viet Nam is at the provincial level.

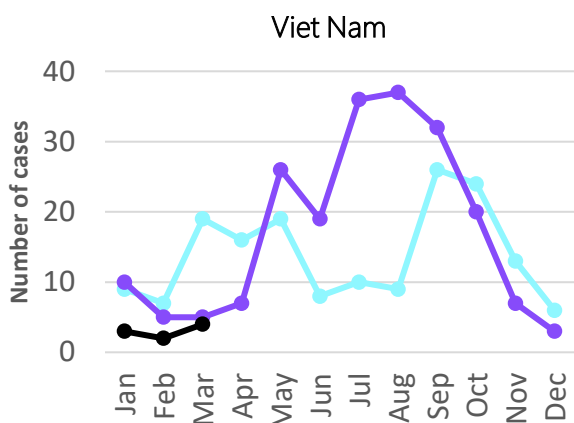
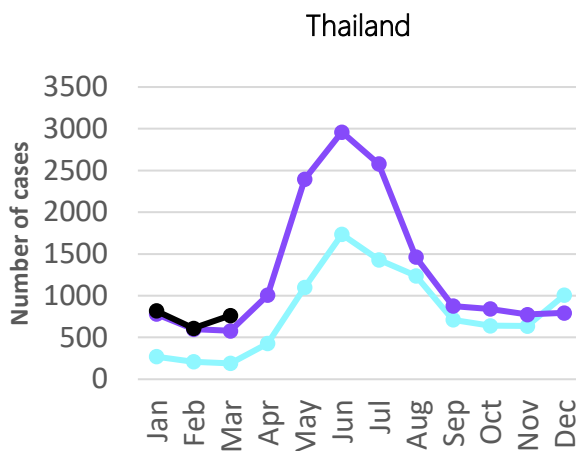
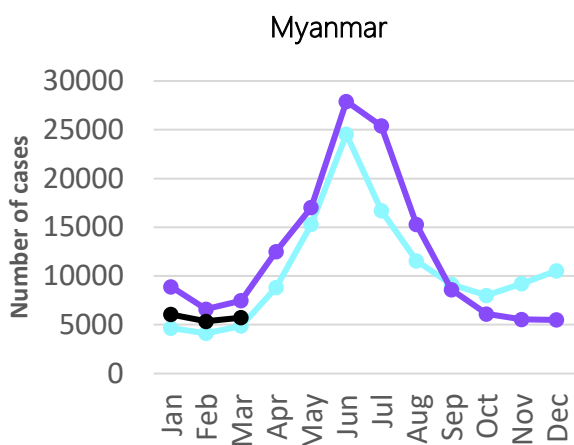
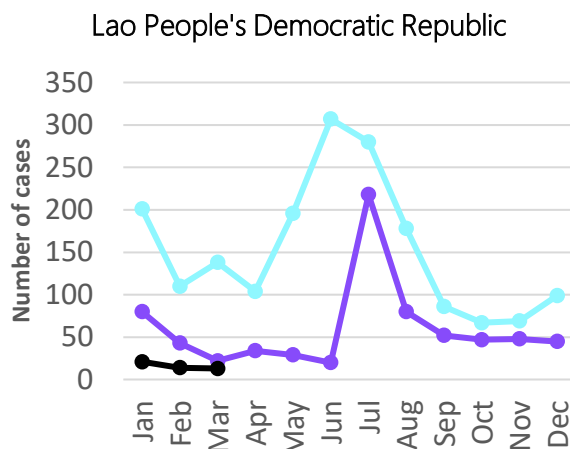
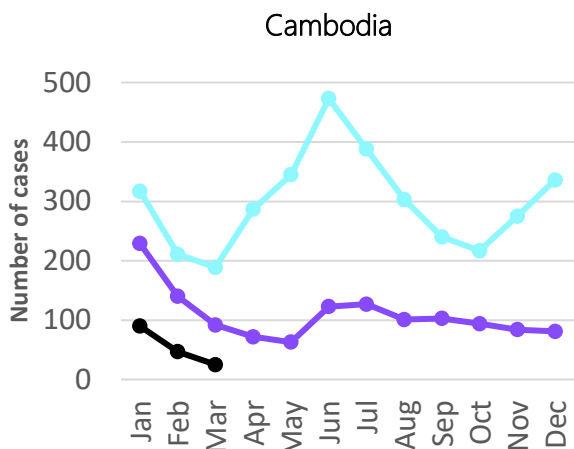
Subnational administrative boundaries for Lao People's Democratic Republic, Myanmar, Thailand and Viet Nam: <https://data.humdata.org/>. Licensed under the [CC BY 4.0](https://creativecommons.org/licenses/by/4.0/) international licence. WHO has adapted the maps by colouring the shapefiles to show country data. Subnational administrative boundaries for Cambodia: Department of planning and health information of the Ministry of Health.

Number of *P. falciparum* + mixed cases by month and country (2022–2024)*



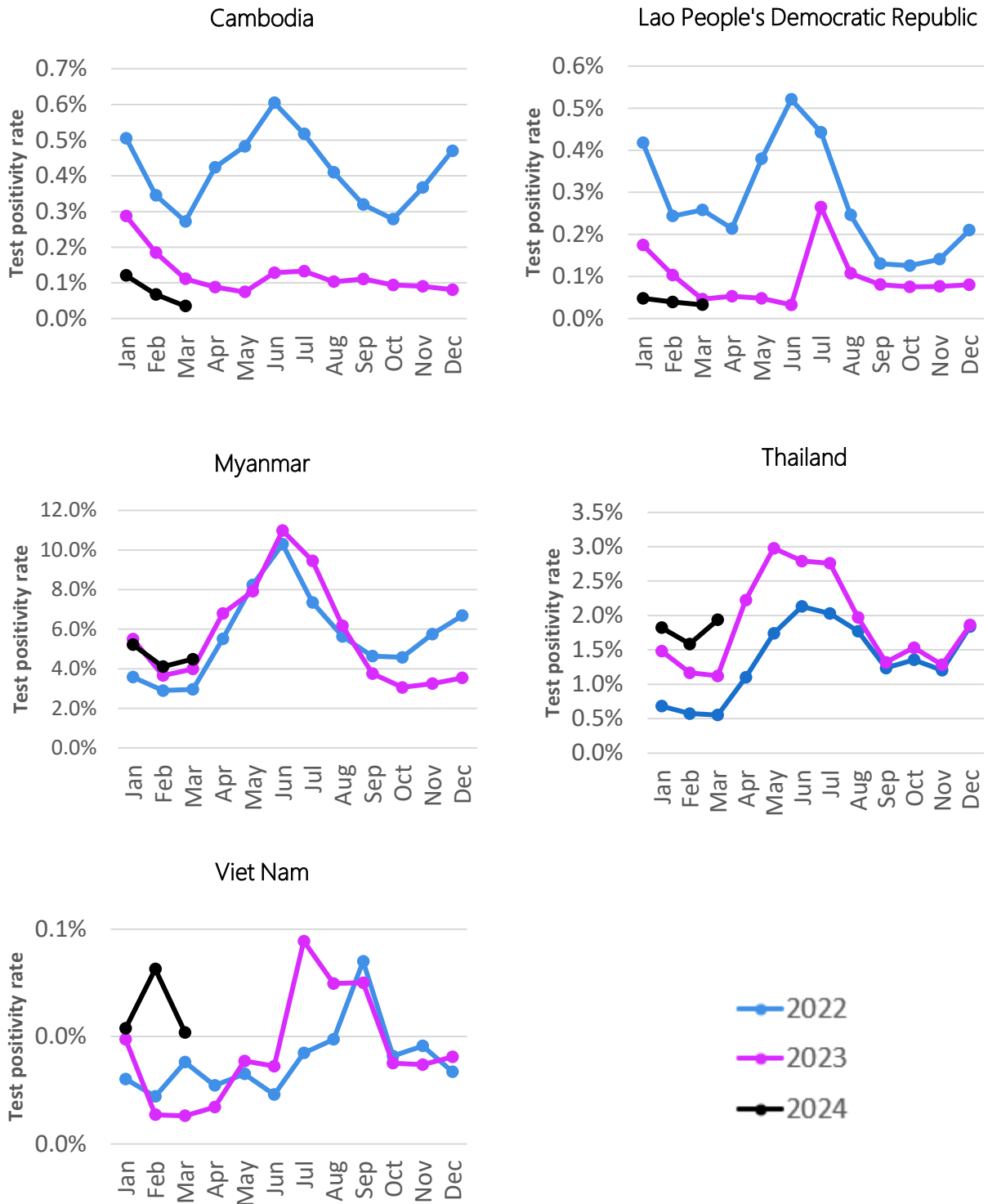
*Data from 2024 - covers January – March

Number of *P. vivax* cases by month by country* (2022–2024)



*Data from 2024 covers January – March

Monthly test positivity rate (TPR) by country* (2022–2024)



*TPR is calculated as number of confirmed cases divided by number of tested cases (including rapid diagnostic tests and microscopy) per month per country.

*Data from 2024 covers January – March

Monthly malaria cases and deaths by country in 2023 (Jan–Dec)

Country	Surveillance indicator ¹	Jan	Feb	Mar	Apr	May	Jun	Jul	Aug	Sep	Oct	Nov	Dec	Total	
Cambodia ²	Deaths	0	0	0	0	0	0	0	0	0	0	0	0	0	
	Suspected cases tested	83 566	79 489	88 229	83 995	89 921	98 094	99 458	103 684	105 599	105 241	103 125	104 115	1 144 516	
	Confirmed cases	240	147	98	74	67	126	132	107	117	99	93	84	1 384	
	<i>P. falciparum</i> cases	8	7	4	2	1	1	1	3	4	2	1	0	34	
	<i>P. vivax</i> cases	229	140	92	72	63	123	127	101	103	94	84	81	1 309	
	Mixed cases	0	0	0	0	0	0	0	0	0	0	0	0	0	
	Other cases	3	0	2	0	3	2	4	3	10	3	8	3	41	
	Imported cases	0	0	0	0	1	0	0	0	0	1	0	0	2	
China ³	Deaths	0	0	0	0	0	0	0	0	0	0	0	0	0	
	Suspected cases tested	3 482	3 735	5 343	6 534	8 496	8 237	10 564	11 458	14 685	12 431	8 518	9 398	102 881	
	Confirmed cases	3	5	9	18	52	59	66	32	27	13	25	31	340	
	<i>P. falciparum</i> cases	0	1	0	0	1	0	0	0	1	0	0	0	3	
	<i>P. vivax</i> cases	3	4	9	18	51	58	66	32	26	13	25	31	336	
	Mixed cases	0	0	0	0	0	0	0	0	0	0	0	0	0	
	Other cases	0	0	0	0	0	1	0	0	0	0	0	0	1	
	Imported cases	3	5	9	18	52	58	66	31	26	12	25	30	335	
Lao People's Democratic Republic	Deaths	0	0	0	0	0	0	0	0	0	0	0	0	0	
	Suspected cases tested	52 146	47 506	62 988	66 092	72 876	77 560	84 570	81 094	79 349	78 419	73 473	71 041	847 114	
	Confirmed cases	91	49	29	35	35	25	224	87	64	59	56	57	811	
	<i>P. falciparum</i> cases	11	6	7	1	6	5	6	5	11	11	8	11	88	
	<i>P. vivax</i> cases	80	43	22	34	29	20	218	80	52	47	48	45	718	
	Mixed cases	0	0	0	0	0	0	0	2	1	1	0	1	5	
	Other cases	0	0	0	0	0	0	0	0	0	0	0	0	0	
	Imported cases	1	4	3	2	5	1	1	3	0	3	2	1	26	
Myanmar ⁴	Deaths	1	0	1	1	1	1	1	0	0	0	0	1	7	
	Suspected cases tested	216 306	215 887	220 754	215 380	242 765	292 327	301 784	275 994	255 608	228 986	203 204	187 073	2 856 068	
	Confirmed cases	11 895	7 907	8 818	14 627	19 219	32 103	28 539	17 030	9 606	7 014	6 605	6 624	169 987	
	<i>P. falciparum</i> cases	2 898	1 243	1 290	2 058	2 111	3 865	2 926	1 592	915	830	997	1 058	21 783	
	<i>P. vivax</i> cases	8 899	6 598	7 469	12 513	17 025	27 916	25 400	15 282	8 595	6 108	5 548	5 492	146 845	
	Mixed cases	98	66	59	56	83	322	213	156	96	76	60	74	1 359	
	Other cases	0	0	0	0	0	0	0	0	0	0	0	0	0	
Thailand	Deaths	Data not available ⁵													6
	Suspected cases tested	58 261	55 951	59 587	49 688	83 843	111 085	98 436	78 398	70 325	59 264	64 924	45 769	835 531	
	Confirmed cases	864	653	668	1 106	2 497	3 102	2 716	1 548	928	908	833	852	16 675	
	<i>P. falciparum</i> cases	23	10	18	28	55	93	90	56	22	32	33	32	492	
	<i>P. vivax</i> cases	780	599	580	1 008	2 397	2 961	2 579	1 464	876	843	776	795	15 658	
	Mixed cases	8	4	5	10	13	17	16	9	5	5	1	0	93	
	Other cases	52	39	63	58	22	20	21	15	18	21	20	22	371	
	Unknown	1	1	2	2	10	11	10	4	7	7	3	3	61	
	Imported cases	465	307	318	511	1 020	1 198	1 008	572	411	383	392	402	6 987	
Viet Nam	Deaths	0	0	0	0	1	0	0	1	0	0	0	0	2	
	Suspected cases tested	66 774	91 933	104 852	109 512	116 439	113 947	115 107	115 463	116 579	113 076	101 491	83 239	1 248 412	
	Confirmed cases	26	10	11	15	36	33	87	69	70	34	30	27	448	
	<i>P. falciparum</i> cases	14	5	6	7	7	9	16	5	22	9	12	12	124	
	<i>P. vivax</i> cases	10	5	5	7	26	19	36	37	32	20	7	3	207	
	Mixed cases	2	0	0	0	3	0	0	0	14	0	0	0	19	
	Other cases	0	0	0	1	0	5	35	27	2	5	11	12	98	
	Imported cases	13	8	3	6	10	18	17	11	29	8	4	5	132	

¹ Mixed cases include cases identified with more than one *Plasmodium* species. Other cases refer to *P. malariae*, *P. ovale*, *P. knowlesi* and unknown cases. Data in the table includes microscopy and rapid diagnostic tests (RDTs).

² Numbers of cases includes data from two systems: the malaria information system (MIS) and the health information system (HIS).

³ Numbers of cases for China refers to imported and relapse cases in 19 border counties of Yunnan Province . No indigenous cases were reported since 2017.

⁴ Data on imported cases is currently not available for Myanmar. The monthly data for 2024 reported under Myanmar is not finalized and may subject to change.

⁵ Malaria deaths from Thailand are officially reported annually.

Monthly malaria cases and deaths by country in 2024 (Jan–Dec)

Country	Surveillance indicator ¹	Jan	Feb	Mar	Apr	May	Jun	Jul	Aug	Sep	Oct	Nov	Dec	Total	
Cambodia ²	Deaths	0	0	0										0	
	Suspected cases tested	81 262	73 946	80 661											235 869
	Confirmed cases	98	50	28											176
	<i>P. falciparum</i> cases	2	0	0											2
	<i>P. vivax</i> cases	90	47	25											162
	Mixed cases	0	0	0											0
	Other cases	6	3	3											12
	Imported cases	0	0	0											0
China ³	Deaths	0	0	0										0	
	Suspected cases tested	5 765	4 427	5 318											15 510
	Confirmed cases	30	24	42											96
	<i>P. falciparum</i> cases	0	0	0											0
	<i>P. vivax</i> cases	30	24	41											95
	Mixed cases	0	0	0											0
	Other cases	0	0	1											1
	Imported cases	23	24	40											87
Lao People's Democratic Republic	Deaths	0	0	0										0	
	Suspected cases tested	60 470	58 760	61 266											180 496
	Confirmed cases	29	23	20											72
	<i>P. falciparum</i> cases	8	9	5											22
	<i>P. vivax</i> cases	21	14	13											48
	Mixed cases	0	0	2											2
	Other cases	0	0	0											0
	Imported cases	0	1	3											4
Myanmar ⁴	Deaths	0	0	0										0	
	Suspected cases tested	138 686	148 608	144 048											431 342
	Confirmed cases	7 243	6 108	6 468											19 819
	<i>P. falciparum</i> cases	1 117	725	704											2 546
	<i>P. vivax</i> cases	6 053	5 344	5 733											17 130
	Mixed cases	73	39	31											143
	Other cases	0	0	0											0
Thailand		Data not available ⁵													
	Suspected cases tested	48 935	42 316	41 587											132 838
	Confirmed cases	892	671	806											2 369
	<i>P. falciparum</i> cases	39	32	22											93
	<i>P. vivax</i> cases	819	610	763											2 192
	Mixed cases	4	9	5											18
	Other cases	28	19	16											63
	Unknown	2	1	0											3
Imported cases	502	364	421											1 287	
Viet Nam	Deaths	0	0	0										0	
	Suspected cases tested	62 631	62 881	77 059											202 571
	Confirmed cases	27	41	32											100
	<i>P. falciparum</i> cases	15	34	15											64
	<i>P. vivax</i> cases	3	2	4											9
	Mixed cases	1	0	0											1
	Other cases	8	5	13											26
Imported cases	12	13	10											35	

¹ Mixed cases include cases identified with more than one *Plasmodium* species. Other cases refer to *P. malariae*, *P. ovale*, *P. knowlesi* and unknown cases. Data in the table includes microscopy and rapid diagnostic tests (RDTs).

² Numbers of cases includes data from two systems: the malaria information system (MIS) and the health information system (HIS).

³ Numbers of cases for China refers to imported and relapse cases in 19 border counties of Yunnan Province. No indigenous cases were reported since 2017.

⁴ The monthly data for 2024 reported under Myanmar is not finalized and may subject to change.

⁵ Malaria deaths from Thailand are officially reported annually.

Notes

The Mekong Malaria Elimination (MME) programme is an initiative aimed at supporting the countries in the Greater Mekong subregion towards the goal of malaria elimination by 2030. The World Health Organization (WHO) has compiled data for this publication based on reports from the countries in the Greater Mekong subregion. The data presented in this publication are based on available data as of May 2024.

Data sources: Reported cases include cases reported from all sources of public health facilities, community health workers and the private sector.

Map sources: The shapefiles used for creating the maps are provided by OCHA under the [CC BY 4.0](#) licence. WHO has adapted the maps by colouring the shapefiles to show country data. Maps for Cambodia are used with permission of the Department of planning and health information of the Ministry of Health. The boundaries, names shown, and the designations used on this map do not imply the expression of any opinion whatsoever on the part of the World Health Organization concerning the legal status of any country, territory, city or area or of its authorities, or concerning the delimitation of its frontiers or boundaries. Dotted and dashed lines on maps represent approximate border lines for which there may not yet be full agreement.

© **World Health Organization 2024**. Some rights reserved. This work is available under the [CC BY-NC-SA 3.0](#) IGO licence.

Suggested citation. Mekong Malaria Elimination Programme epidemiology summary, volume 25, January-March 2024. Geneva: World Health Organization; 2024. <https://doi.org/10.2471/B09094>

Previous quarterly epidemiology summaries can be found
on the [MME programme website](#)

