

ETHIOPIA NATIONAL WASH CLUSTER BRIEFING PACKAGE



March 2024

Please visit the Ethiopia WASH Cluster page <https://response.reliefweb.int/ethiopia/water-sanitation-hygiene>.
Ethiopia WASH cluster Twitter account [@WASHcluster_Eth](https://twitter.com/WASHcluster_Eth)

WASH Cluster in Ethiopia

Background

The document is part of the briefing package for Ethiopia's Water, Sanitation, and Hygiene (WASH) Cluster, which consists of resources that provide greater clarity and guidance to the cluster partners and other humanitarian actors.

The document is divided into four sections. Each section represents the cluster's coordination system (i) WASH Cluster coordination management, (ii) HPC process, (iii) Response monitoring, (iv) WASH response, and (v) Cluster meeting coordination.

Cluster Overview

The WASH Cluster in Ethiopia is part of and supports the Ministry of Water and Energy (MoWE). MoWE leads the WASH cluster emergency task force (ETF), which is co-led by the WASH Cluster secretariat hosted by UNICEF. In Ethiopia, the WASH Cluster was established with the activation of the cluster approach in 2006, and UNICEF, as the global Cluster Lead Agency, was assigned to appoint the WASH Cluster Coordinator.

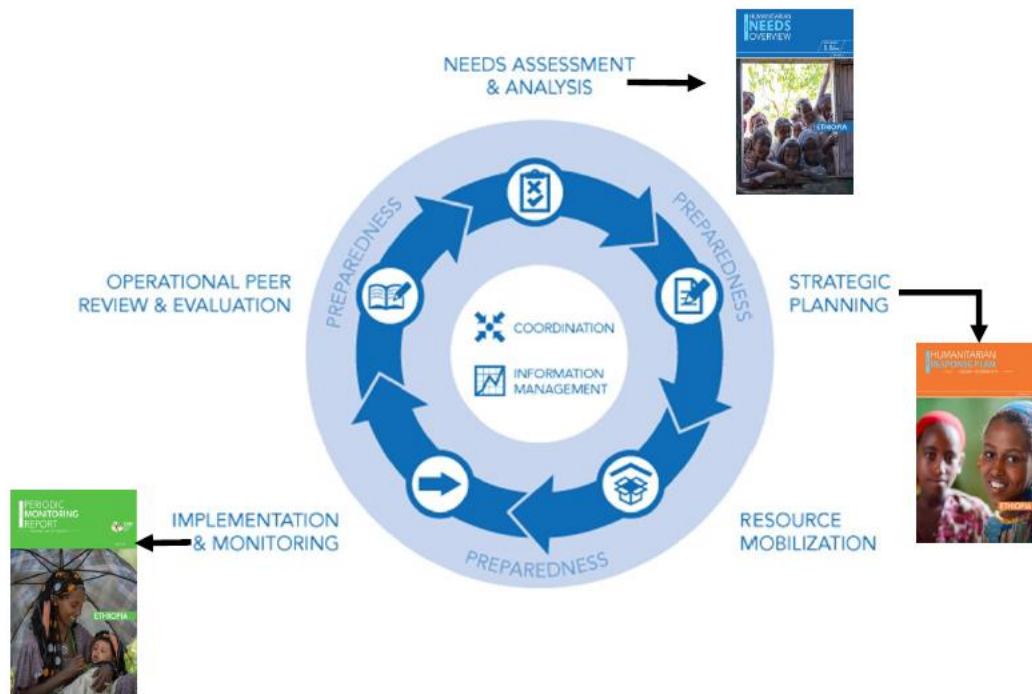
The WASH Cluster aims to provide guidance and support to its partners to ensure well-coordinated, quality assistance reaches those in need in accordance with humanitarian standards and principles. Conflict, severe drought conditions, seasonal flooding, and Cholera remain the key drivers of WASH needs in Ethiopia.

In 2024, the WASH Cluster aims to work with 79 partners to preserve life, well-being, and dignity and reduce the risk of WASH-related disease through timely interventions to vulnerable populations and preparedness to respond to shocks. Significant humanitarian WASH needs in 2024 are projected with a rigorous HPC process in Ethiopia.

The Humanitarian Program Cycle

The humanitarian program cycle (HPC) is a coordinated series of actions to help prepare for, manage, and deliver humanitarian response. It consists of five coordinated elements, each step logically building on the previous and leading to the next. Successful implementation of the HPC depends on effective emergency preparedness, effective coordination with national/local authorities and humanitarian actors, and information management. Affected people are central to the response; preparedness, coordination, and information management processes continually occur.

Humanitarian Program Cycle



Humanitarian Needs Overviews

Humanitarian needs overviews (HNO) are produced to support the Humanitarian Country Team (HCT) in developing a shared understanding of a crisis's impact and evolution and to inform response planning. This document presents a comprehensive analysis of the overall situation and associated needs. Its development is a shared responsibility among all humanitarian actors. It requires strong collaboration between the program and information management staff, support from the OCHA country office, and the inter-cluster coordination mechanism.

The WASH cluster response is articulated around two cluster objectives:

1. Ensure that affected people in need of life saving WASH services receive timely, equitable, safe, lifesaving, and effective emergency WASH assistance.
2. Ensure that people affected by crisis have access to resilient and sustainable WASH services.

Based on the humanitarian need analysis, over 15.2 million individuals in Ethiopia will need emergency WASH services in 2024.

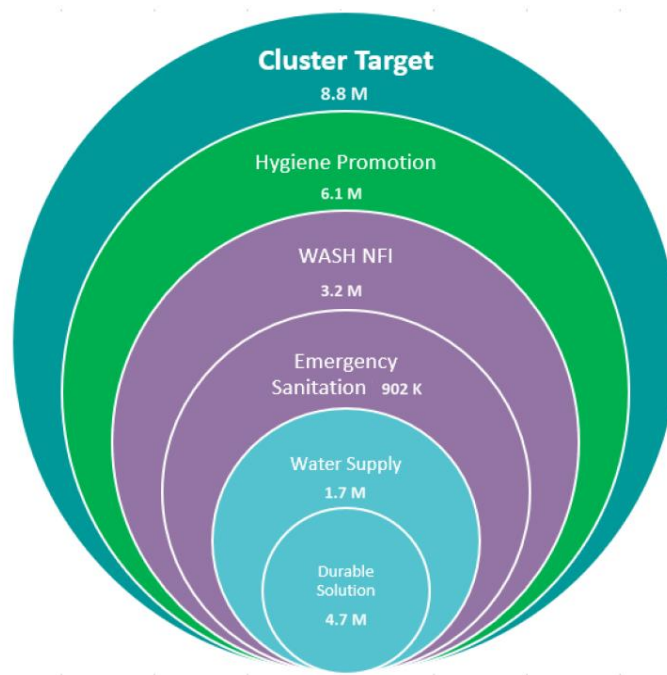
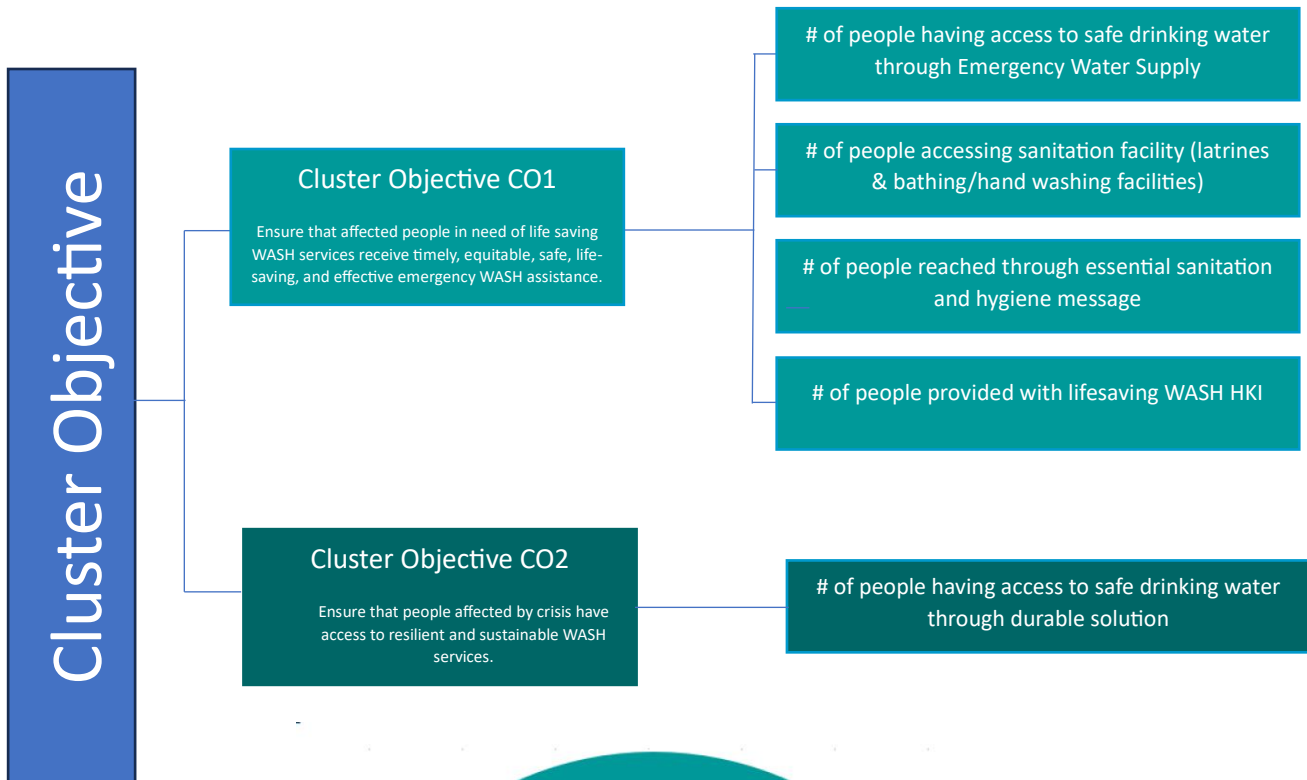
Humanitarian Response Plan

The Humanitarian Response Plan (HRP) is prepared for a protracted or sudden onset emergency that requires international humanitarian assistance. The plan articulates the shared vision of how to respond to the assessed and expressed needs of the affected population. Developing a strategic response plan is a key step in the humanitarian program cycle. It is carried out only when the needs

have been understood and analyzed through the HNO or other joint needs assessment and analysis processes.

In 2024, the WASH cluster targets 8.8 million people across all regions to meet the minimum WASH standards and save lives.

WASH Cluster Strategic Objectives and Indicators



WASH Response

The WASH response is articulated around Six activities.

- I. Emergency water interventions, including water trucking, emergency water systems (EMWAT kits), and chlorination. Water trucking will be used only as a last-resort intervention when no other intervention is available. In light of the cholera outbreak, chlorination will be a prioritized intervention across the country in 2024.
- II. Durable water interventions: Rehabilitation and maintenance of water schemes; pipeline expansion; development of new water points. In 2024, sustainable interventions will be prioritized from the start of any new emergency.
- III. Emergency sanitation: Construction of emergency latrines, bathing, and handwashing facilities. This will include different types of latrines, such as VIP latrines, semi-permanent latrines, and emergency trench latrines, according to the needs and context.
- IV. Sanitation and hygiene promotion will go along with risk communication and community engagement (RCCE) activities for people affected by or at risk of disease outbreaks.
- V. Provision/distribution of lifesaving WASH NFIs will be distributed to the affected population to facilitate water storage and household-level water treatment.
- VI. WASH in institutions in humanitarian settings: WASH in health care facilities and WASH in schools.

[Emergency WASH Response Minimum Standards](#)

WASH Response Monitoring

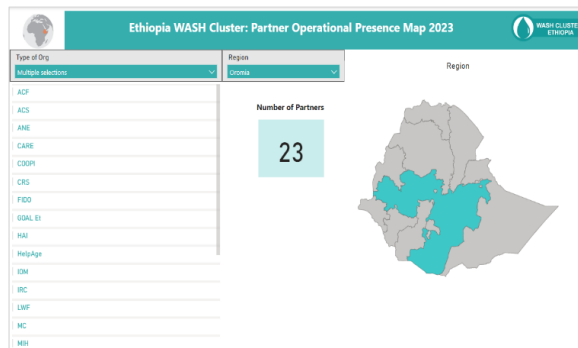
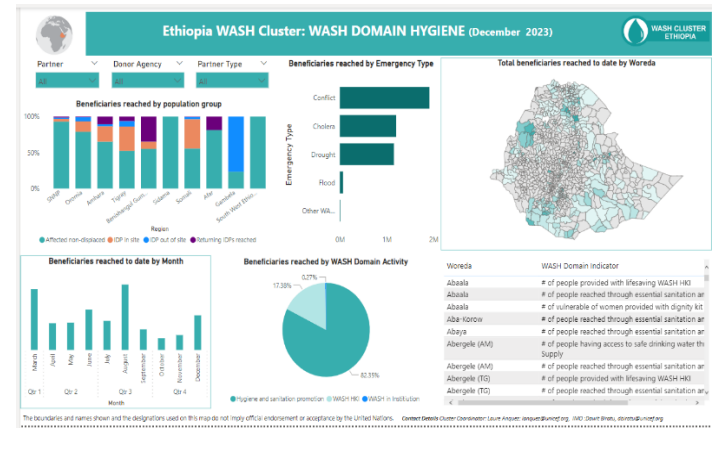
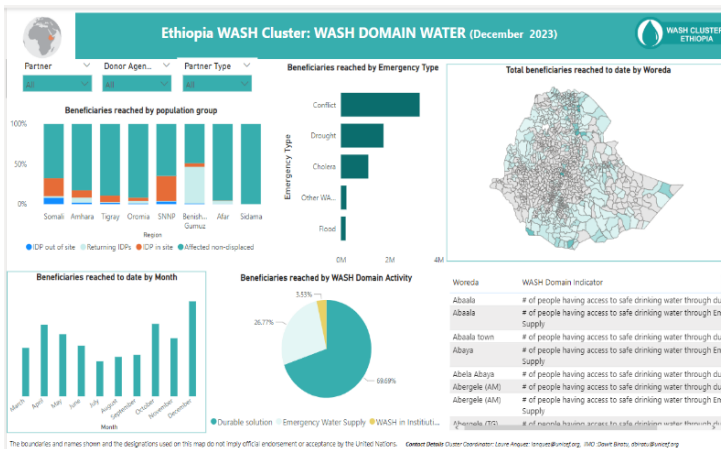
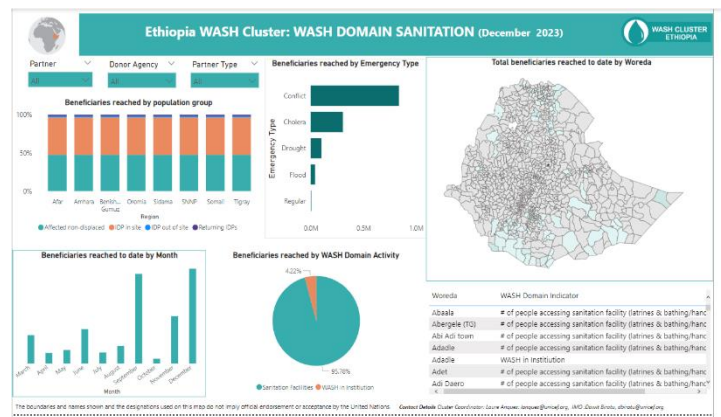
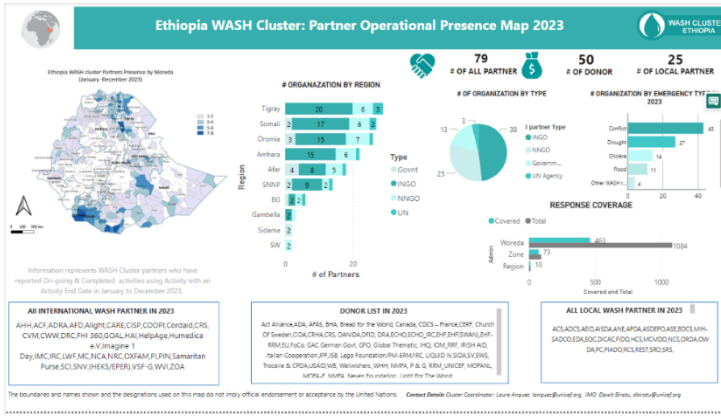
In 2024, the IMWG will continue to use Activity Info, a humanitarian partner-based system for reporting responses that will integrate Who does What, Where, When, and for Whom (5Ws) reporting with regular monthly HRP response monitoring. WASH clusters will monitor response activities such as awareness raising, sensitization, and capacity building but will not contribute to the intersectoral targets and overall people reach.

All clusters are responsible for reporting their achievements (overall and by indicator) through the online system of Response Planning and Monitoring (RPM) each month. The RPM will be calculated directly from Activity Info submissions. To attain this objective, clusters will base their implementation plan, stock and pipeline tracking, and monthly monitoring data collection on Activity Info.

The response achievement data will be reported at the woreda level and will be disaggregated by population group, sex, and age, as well as by people with disability. Clusters will also collect

monthly operational presence data from implementing partners. Through the implementation of complaint and feedback mechanisms, effectiveness and accountability will be prioritized.

This will support response monitoring, allowing communities to raise complaints and provide feedback, improving response quality.



The number of beneficiaries reached by WASH cluster partners in 2023.

WASH DOMAIN	HRP Indicators	2023 [Percentage from the target]
WATER	# of people having access to safe drinking water through Emergency Water Supply (including EMWAT)	1,729,437 [52%]
	# of people having access to safe drinking water through durable solution	4,534,209 [96%]
HYGIENE	# of people reached through essential sanitation and hygiene message	3,573,929 [47%]
	# of people provided with lifesaving WASH HKI	753,052 [22%]
SANITATION	# of people accessing sanitation facilities (latrines & bathing/hand washing facilities)	955,132

Cumulative reached by population group January to December 2023

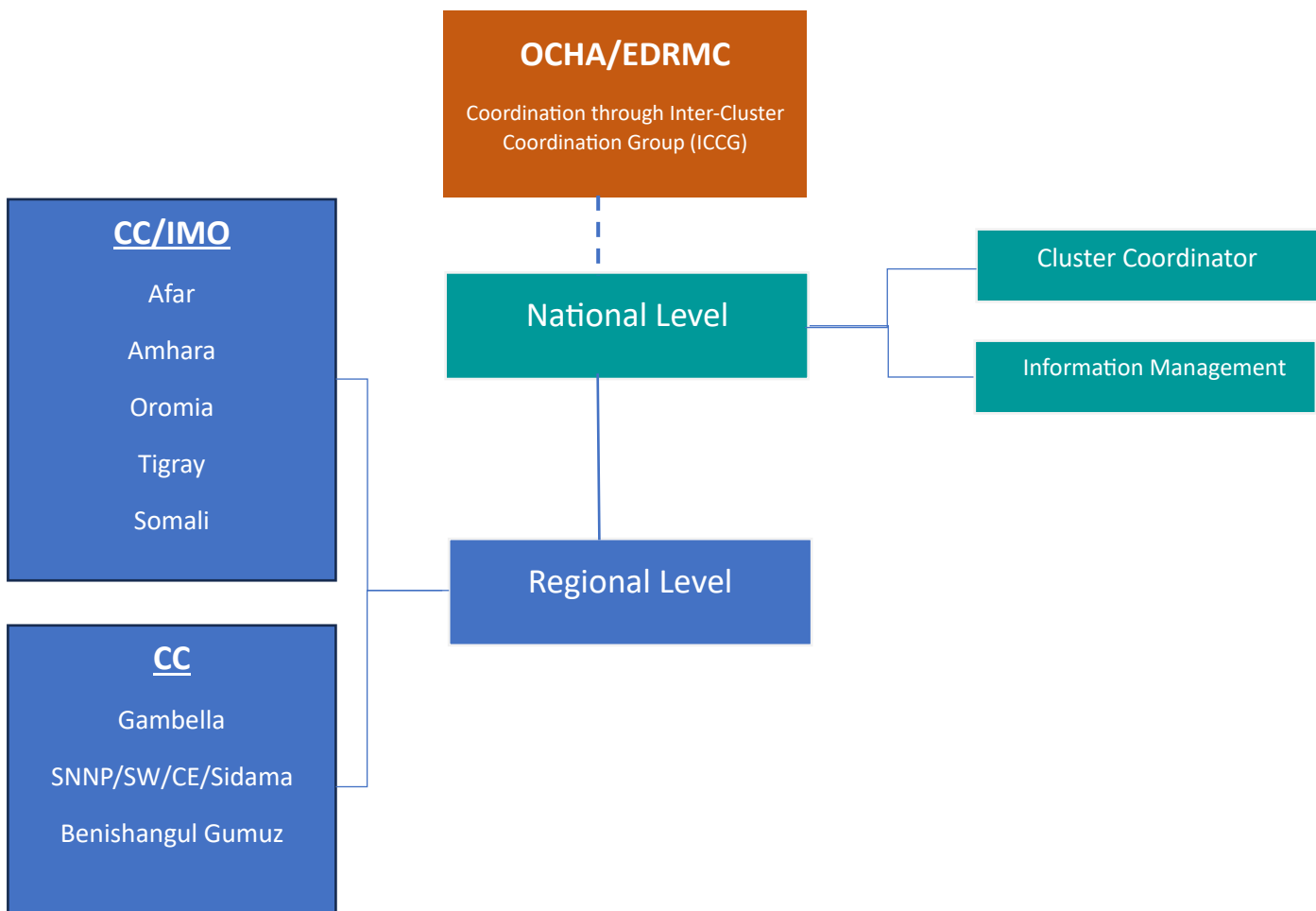
Region	IDPs in Sites	IDPs out of sites	Returning IDPs	Non-Displaced
Afar	3,581	1,500	48,143	1,020,821
Amhara	521,899	33,241	56,872	848,819
Benishangul Gumz	10,322	3,101	87,301	28,384
Gambela	-	5,626	-	1,604
Oromia	118,576	40,264	62,806	1,712,134
Sidama	-	-	-	195,359
SNNP	56,523	28,213	8,350	461,941
Somali	221,563	29,690	8,790	390,860
Tigray	202,450	28,603	13,335	1,094,850
Total	1,134,914	170,238	285,597	5,754,772

WASH CLUSTER CUMULATIVE REACH:- 7,345,521 (61.7%)

WASH Coordination Management

Ethiopia is vulnerable to many emergencies and has a long history of natural and complex disasters. Coordination of the WASH sector is naturally complex as it is linked to two separate ministries - the Ministry of Water and Energy and the Ministry of Health- involving many agencies and civil society organizations.

The WASH Emergency Task Force (ETF) was established in 2006 to improve coordination across these various stakeholder groups. Under the overall leadership of the Ministry of Water and Energy, the ETF is providing a common platform for information sharing and coordination among partners. The WASH Cluster plays a strategic advisory role to the ETF, focusing on capacity building, information management, monitoring, and applying WASH standards in emergencies. Ethiopia has a decentralized cluster coordination system with one national cluster coordination platform and six sub-national platforms. MoWE leads the coordination at all levels.



Emergency Task Force **WASH** cluster coordination meeting

- i) Current ETF Member partners:** All WASH cluster partners
- ii) ETF Main Responsibility:** to ensure predictable leadership, accountability, and partnership in providing WASH services to people affected by natural or complex disasters in Ethiopia.
- iii) ETF Membership process:** The ETF/WASH Cluster has a permanent Secretariat based at the Ministry of Water, Irrigation and Electricity (MoWE) in Addis Ababa, Ethiopia. The ETF is open to all WASH sector stakeholders. Core WASH Cluster members are selected based on their cluster-related responsibilities, mandate, national reputation, and willingness and ability to contribute to achieving the WASH Cluster purpose.
- iv) ETF Meeting:** ETF/ WASH Cluster shall meet at least once a month on the last Tuesday at 10:00 a.m. at the MoWE headquarters, Addis Ababa.

WASH Strategic Advisory Group (SAG)

- i) Current SAG Member Partners:** UNICEF, MoWE, MoH, OWDA, ERCS, IRC, AAH, WVI, CRS and SCI
- ii) SAG Main Responsibility:** Draws strategic guidance for effective and efficient emergency responses and forward-thinking on the development, facilitates rapid decision-making on behalf of the WASH Cluster, and facilitates advocacy with government, other clusters, and donors
- iii) SAG Membership process:** Renewing half the members every two years
- iv) ETF Meeting:** Quarterly

Contact

If you would like to be added to the WASH Cluster e-mailing list, please join the [WASH Cluster Google Group](#). (Click on "Apply to join Group")

General WASH Cluster email: wash.cluster.ethiopia@gmail.com

E-mail addresses of WASH focal points at national and field offices:

UNICEF WASH Focal points (CC)	UNICEF WASH IMOs
Addis Ababa (National) Laure Anquez lanquez@unicef.org	Dawit Biratu dbiratu@unicef.org
Afar: Beshah M Behailu bbehailu@unicef.org	Yayo Mohammed yayoilg@gmail.com
Amhara: Selamawit Yetemegn syetemegn@unicef.org	Merkebu Yimer myimer@unicef.org
Benishangul Gumuz Chemed Nurgi cnurgi@unicef.org	
Gambela Alemayehu Belay abelay@unicef.org	
Oromia: Kuribachew Mamo kmamo@unicef.org	Samuel Bulo Faji sfaji@unicef.org
SIDAMA/SW/CE/SE Getachew Asmare gasmare@unicef.org	Nadew Namaro nadewn@gmail.com
Somali: Derek Kim dhkim@unicef.org	Under Recruitment
Tigray: Vikas Goyal vgoyal@unicef.org	Adis Asefa Weldelibanos aasefa@unicef.org