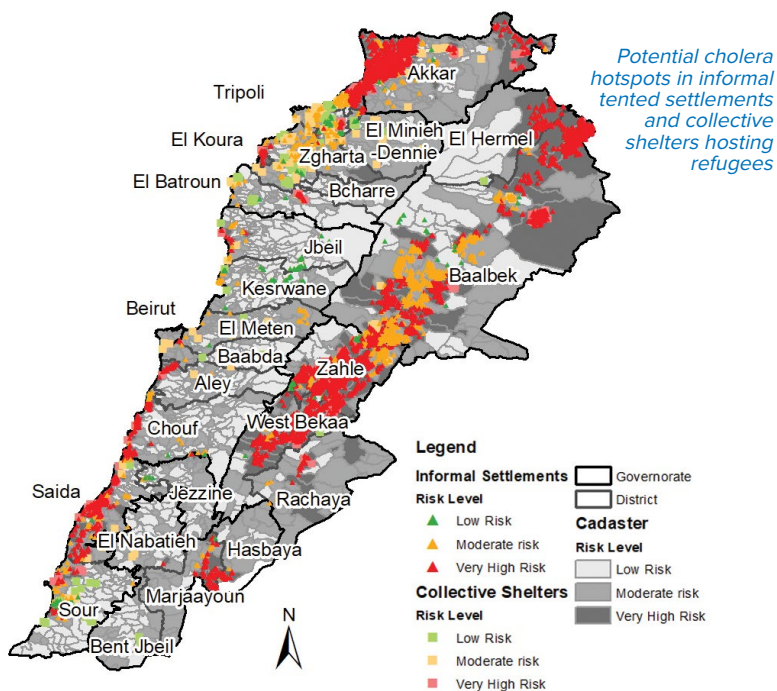


## Situation Overview

Following the first reported cholera case in Lebanon, the Ministry of Public Health (MoPH) declared a cholera outbreak on 6 October 2022.

Cholera is an acute diarrhoeal infection caused by ingesting contaminated food or water. It can spread rapidly in areas with inadequate access to safe water, sanitation and health care.

Vulnerable populations living in inadequate shelters with limited access to basic services are at heightened risk to be exposed to cholera. This includes refugees living in informal tented settlements and collective shelters as well as vulnerable host communities.

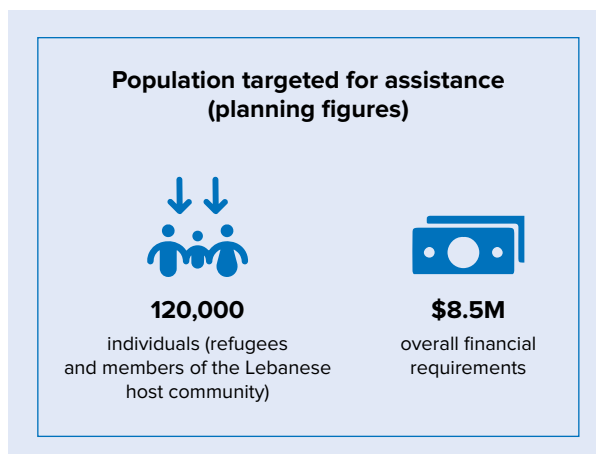


## UNHCR Response

UNHCR's interventions<sup>1</sup> aim to support the national plan and are implemented under the overall leadership of the MoPH. UNHCR works closely with the Government of Lebanon, WHO, UNICEF and other UN agencies and non-governmental organizations (NGOs) on the cholera response activities. This is done across the Lebanon Crisis Response Plan (LCRP) and Emergency Response Plan (ERP) to ensure inter-agency coordination and complementarity of interventions. UNHCR will continue to adapt its interventions in line with the exigencies of the evolving humanitarian situation.

**The objectives of UNHCR's cholera response activities are to:**

- Enhance cholera prevention, response and surveillance structures, to contain the outbreak, including support for vaccination campaign.
- Increase the capacity of health care facilities and ensure access to early diagnosis, treatment and timely life-saving support for cholera/acute watery diarrhoea patients.
- Strengthen risk communication and community engagement by maintaining two-way communication channels with the refugee communities on cholera prevention and response.
- Ensure timely and appropriate hygiene and shelter measures to control the spread of cholera, with special attention given to the populations in high-risk areas.



<sup>1</sup> The agency ensures that refugees of all ages and backgrounds have access to quality services as part of its Age, Gender and Diversity (AGD) approach.

Sector	UNHCR's Key Areas of Intervention	Details	Financial Requirements (US\$)
 <b>Public Health</b>	<b>Prevention and surveillance</b>	<ul style="list-style-type: none"> <li>• <b>Conduct oral cholera vaccination</b> of high-risk communities in informal settlements and collective shelters through door-to-door campaign, including in hard-to-reach areas, leveraging strong community engagement.</li> <li>• Provide <b>rapid diagnostic tests</b> to support national capacity and field testing.</li> <li>• Support 'Cholera Rapid Response Teams' at the field level to enable <b>fast identification</b> of cases, <b>early warning</b>, and support with <b>case management</b>.</li> </ul>	<b>\$1,960,000</b>
	<b>Case management and hospital support</b>	<ul style="list-style-type: none"> <li>• Convert prioritized facilities at government hospitals that were previously dedicated to COVID-19 treatment into '<b>Cholera Treatment Centres</b>' and '<b>Cholera Treatment Units</b>'.</li> <li>• Provide support to primary health care centres for <b>cholera prevention</b>.</li> <li>• Provide <b>hospitals</b> with essential items, including emergency treatment beds, as well as additional <b>emergency structures</b> for isolation, medical supplies, and medicines.</li> <li>• Cover 100% of the <b>costs for hospital admission</b> for refugee patients with cholera/acute watery diarrhoea.</li> </ul>	<b>\$5,200,000</b>
 <b>Community Engagement</b>	<b>Risk Communication and Community Engagement (RCCE)</b>	<ul style="list-style-type: none"> <li>• Capacitate and empower volunteers and community groups <b>to share information, raise awareness and promote hygiene practices</b>.</li> <li>• Train and coach volunteers <b>to closely support cholera prevention and response measures</b> in communities, with a focus on those living in high-risk locations such as collective shelters.</li> <li>• Support community groups to <b>safely identify and refer</b> cases, including persons at higher risk.</li> <li>• Ensure <b>tracking of the community's knowledge of the disease, behaviors and practices, and share refugees' feedback and identified barriers</b> in the context of the cholera response.</li> <li>• <b>Raise awareness</b> on risks, prevention and treatment referral pathways among the refugee community through printed and audio-visual material, social media campaigns, and SMS/audio messages as well as harmonised counselling lines for humanitarian call centers.</li> </ul>	<b>\$440,000</b>
 <b>Shelter</b>	<b>Hygiene and sanitation conditions in collective shelters</b>	<ul style="list-style-type: none"> <li>• Ensure distribution of personal <b>hygiene items</b> in <b>high-risk collective shelters</b> where refugees reside.</li> <li>• Improve <b>sanitation conditions</b> in collective shelters through chlorination, and provision of clean water where needed</li> <li>• Provide supplies for <b>maintaining and improving hygiene</b> in collective shelters, and for fumigation where a case is identified.</li> </ul>	<b>\$900,000</b>
<b>TOTAL FINANCIAL REQUIREMENTS</b>			<b>\$8,500,000</b>