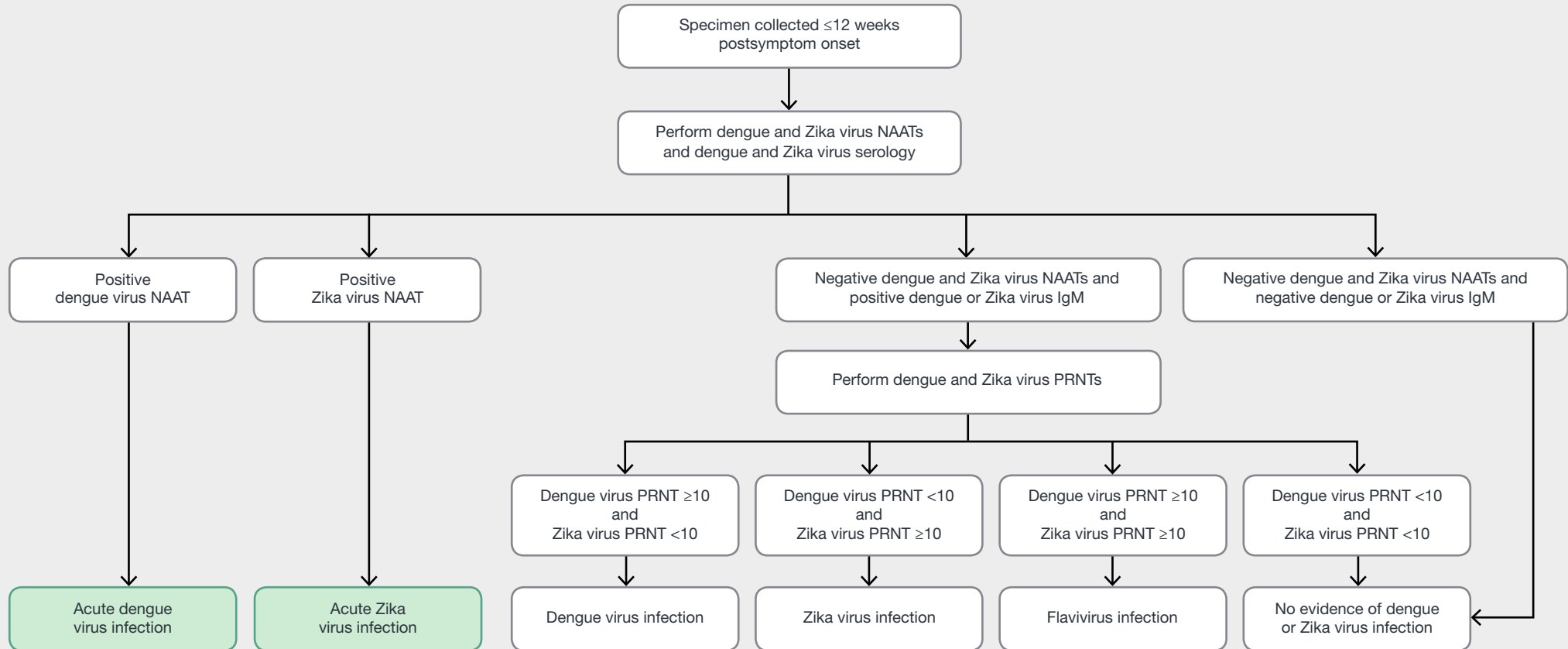


# Dengue and Zika Virus Testing Guidance: Symptomatic Pregnant Women with a Clinically Compatible Illness and Risk for Infection with Both Viruses\*



Accessible version: [https://www.cdc.gov/mmwr/volumes/68/rr/rr6801a1.htm?s\\_cid=rr6801a1\\_w](https://www.cdc.gov/mmwr/volumes/68/rr/rr6801a1.htm?s_cid=rr6801a1_w)

## Testing Guidance and Interpretation of Results for Healthcare Providers



**Abbreviations:** IgM = immunoglobulin M; NAAT = nucleic acid amplification test; PRNT = plaque reduction neutralization test.

**\* Specimen and test selection:** Dengue and Zika virus NAATs, IgM antibody testing, and PRNTs should be performed on serum. Some NAATs also can be performed on plasma, whole blood, cerebrospinal fluid, or urine, and some antibody tests can be performed on plasma, whole blood, or cerebrospinal fluid. Dengue virus NAAT does not need to be performed on specimens collected >7 days after illness onset. Some laboratories might choose to perform dengue virus nonstructural protein-1 testing instead of dengue virus NAAT.

**Indications to repeat assay(s):** If Zika virus NAAT is positive on a single specimen but IgM antibody tests are negative, repeat NAAT on newly extracted RNA from the

same specimen. For indeterminate IgM antibody test results, repeat IgM antibody testing or perform PRNT on the same specimen. In areas where PRNTs are not performed, report the indeterminate results and request a second serum specimen for IgM antibody testing.

**Interpretation of results:** Dengue and Zika virus IgM antibodies can be detected in serum for months following infection. The specific timing of infection cannot be determined. Data on the epidemiology of viruses known to be circulating at the location of exposure and clinical findings should be considered when interpreting the results of serologic diagnostic testing.



U.S. Department of Health and Human Services  
Centers for Disease Control and Prevention

**TABLE 1. Interpretation of dengue and Zika virus diagnostic test results for patients with a clinically compatible illness and risk for infection with both viruses**

Dengue and Zika virus NAATs			Interpretation	
Positive dengue virus assay, negative Zika virus assay Positive Zika virus assay, negative dengue virus assay Positive (both assays) Negative (both assays)			Acute dengue virus infection Acute Zika virus infection Acute dengue and Zika virus co-infection No evidence of dengue or Zika virus infection*	
Dengue and Zika virus IgM antibodies	Dengue virus PRNT	Zika virus PRNT	Nonpregnant patients	Pregnant women
Positive (either assay) <sup>‡</sup> <sup>§</sup>	≥10	<10	Recent dengue virus infection	Dengue virus infection, timing cannot be determined
Positive (either assay) <sup>‡</sup> <sup>§</sup>	<10	≥10	Recent Zika virus infection	Zika virus infection, timing cannot be determined
Positive (either assay) <sup>†</sup>	≥10	≥10	Recent flavivirus infection <sup>¶</sup>	Flavivirus infection, timing cannot be determined
Any result	<10	<10	No evidence of dengue or Zika virus infection**	No evidence of dengue or Zika virus infection**
Positive dengue virus assay, negative Zika virus assay	Not performed		Presumptive recent dengue virus infection	Presumptive dengue virus infection, timing cannot be determined
Positive Zika virus assay, negative dengue virus assay	Not performed		Presumptive recent Zika virus infection	Presumptive Zika virus infection, timing cannot be determined
Positive (both assays)	Not performed		Presumptive recent flavivirus infection <sup>¶</sup>	Presumptive flavivirus infection, timing cannot be determined
Positive dengue virus assay, Zika virus assay not performed	Not performed		Presumptive recent flavivirus infection <sup>¶</sup>	Presumptive flavivirus infection, timing cannot be determined
Positive Zika virus assay, dengue virus assay not performed	Not performed		Presumptive recent flavivirus infection <sup>¶</sup>	Presumptive flavivirus infection, timing cannot be determined
Negative (both assays)	Not performed		No evidence of dengue or Zika virus infection**	No evidence of dengue or Zika virus infection**
Negative dengue virus assay, Zika virus assay not performed	Not performed		No evidence of dengue virus infection**	No evidence of dengue virus infection**
Negative Zika virus assay, dengue virus assay not performed	Not performed		No evidence of Zika virus infection**	No evidence of Zika virus infection**

**Abbreviations:** IgM=immunoglobulin M antibody testing; NAATs=nucleic acid amplification tests; PRNT=plaque reduction neutralization test.

\* In the absence of testing to detect IgM antibodies, negative NAAT results might reflect collection after clearance of detectable viral RNA and does not rule out infection.

† Includes presumptive positive, indeterminate, and equivocal IgM antibody results that are not resolved by retesting.

§ IgM and PRNT antibody testing infrequently provide discordant results (e.g., dengue virus IgM positive, Zika virus IgM negative with dengue virus PRNT titer <10, Zika virus PRNT titer ≥10; or dengue virus IgM negative, Zika virus IgM positive with dengue virus PRNT titer ≥10, Zika virus PRNT titer <10). In such cases, report results as “presumptive flavivirus infection” and request a second specimen for retesting.

¶ The patient should be clinically managed for possible dengue and Zika virus infection because they might have been infected with either or both viruses. Data on the epidemiology of viruses known to be circulating at the location of exposure and clinical findings should be considered when interpreting the results.

\*\* In the absence of NAAT, negative IgM or neutralizing antibody testing in specimens collected ≤7 days after illness onset might reflect collection before the development of a detectable antibody response and does not rule out infection.