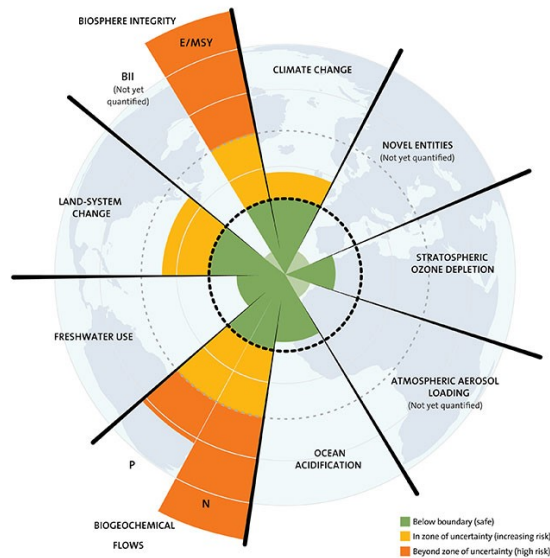


Planetary boundaries



Click on image to download illustration. The illustration is free to use provided you include the correct credit: J. Lokrantz/Azote based on Steffen et al. 2015.

The planetary boundaries concept presents a set of nine planetary boundaries within which humanity can continue to develop and thrive for generations to come

In 2009, former centre director Johan Rockström led a group of 28 internationally renowned scientists to identify the nine processes that regulate the stability and resilience of the Earth system. The scientists proposed quantitative planetary boundaries within which humanity can continue to develop and thrive for generations to come. Crossing these boundaries increases the risk of generating large-scale abrupt or irreversible environmental changes. Since then the planetary boundaries framework has generated enormous interest within science, policy, and practice.

Video below: Johan Rockström introduces the Planetary Boundaries framework at TED Global 2010.