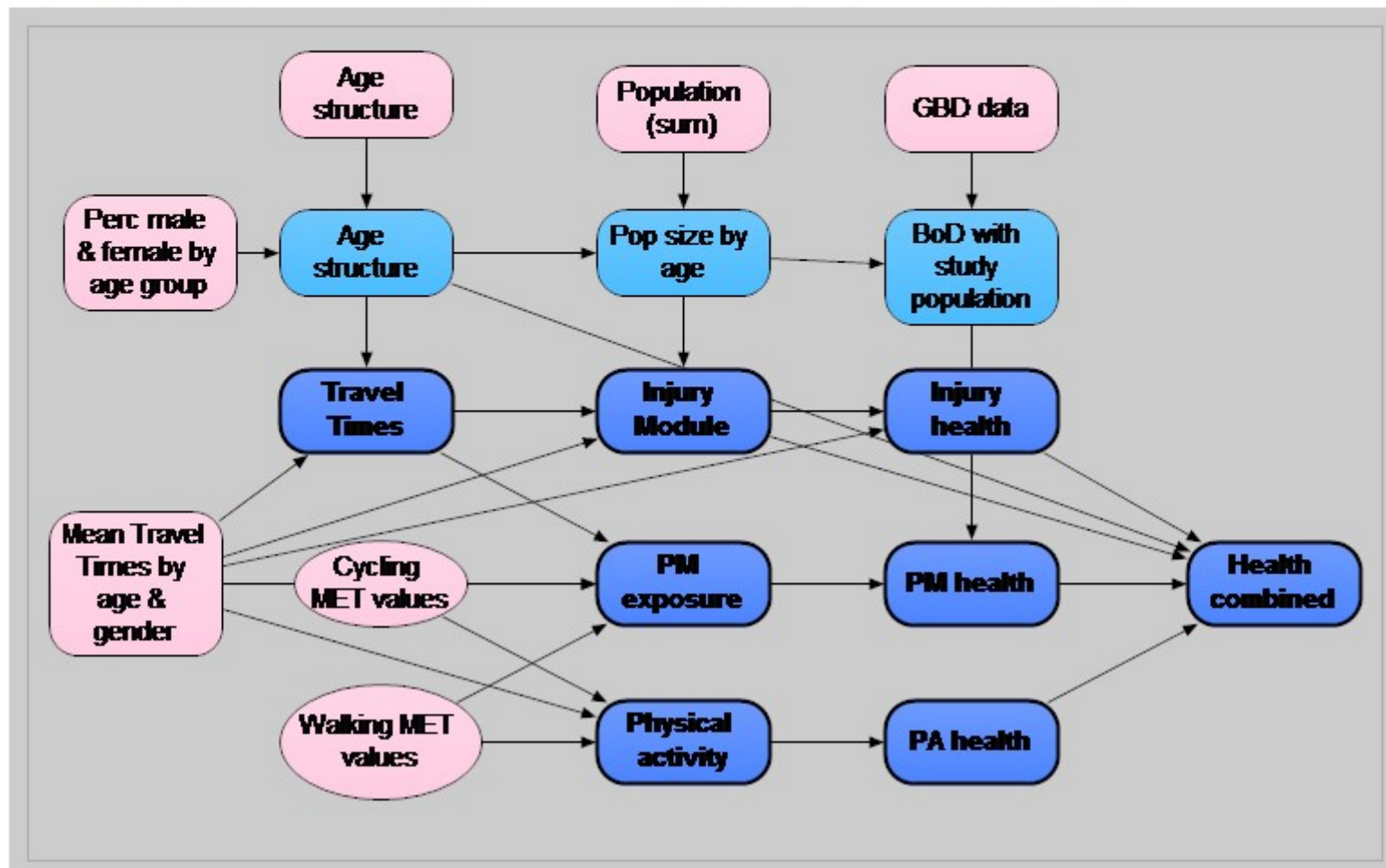


Integrated Transport and Health Impact Modelling Tool (ITHIM)

ITHIM refers to a range of related models and tools developed at CEDAR to perform integrated assessment of the health effects of transport scenarios and policies at the urban and national level. The health effects of transport policies are modelled through changes in physical activity, road traffic injury risk, and exposure to fine particulate matter (PM_{2.5}) air pollution. Some versions of ITHIM also predict changes in CO₂ emissions. ITHIM is being used in research and by health and transport professionals to assess the health impacts of scenarios, compare the impact of travel patterns in different places, and model the impact of interventions. ITHIM works either as a stand-alone model, or it can be linked with other models (e.g. transport, health, economic).

Figure 1: The general overview of the ITHIM model. Picture is from ITHIM version 2 (see version description below). Arrows show the flow of data inside the model. (PM = fine particulate matter air pollution, GBD = Global Burden of Disease study).



fect
gh th
ons c
esti
tions

the