

Haiti Earthquake

REDLAC Shelter/CCCCM/NFI coordination meeting

August 17, 2021



REDLAC - Shelter

Coordinando el alojamiento de emergencia
Coordinating Humanitarian Shelter
ShelterCluster.org

1



Agenda

Time	Topic	Responsible
11:00	Round of introductions	Everyone
11:05	Haiti Situation update	IOM and IFRC
11:20	Humanitarian coordination in place	Haiti Shelter/CCCM/NFI cluster
11:30	Partners updates	All attendees
11:45	Next actions	All attendees
11:55	End of the meeting	



REDLAC - Shelter

Coordinando el alojamiento de emergencia
Coordinating Humanitarian Shelter
ShelterCluster.org

14 August 2021:

Earthquake magnitude 7.2
at a depth of 10.0 km

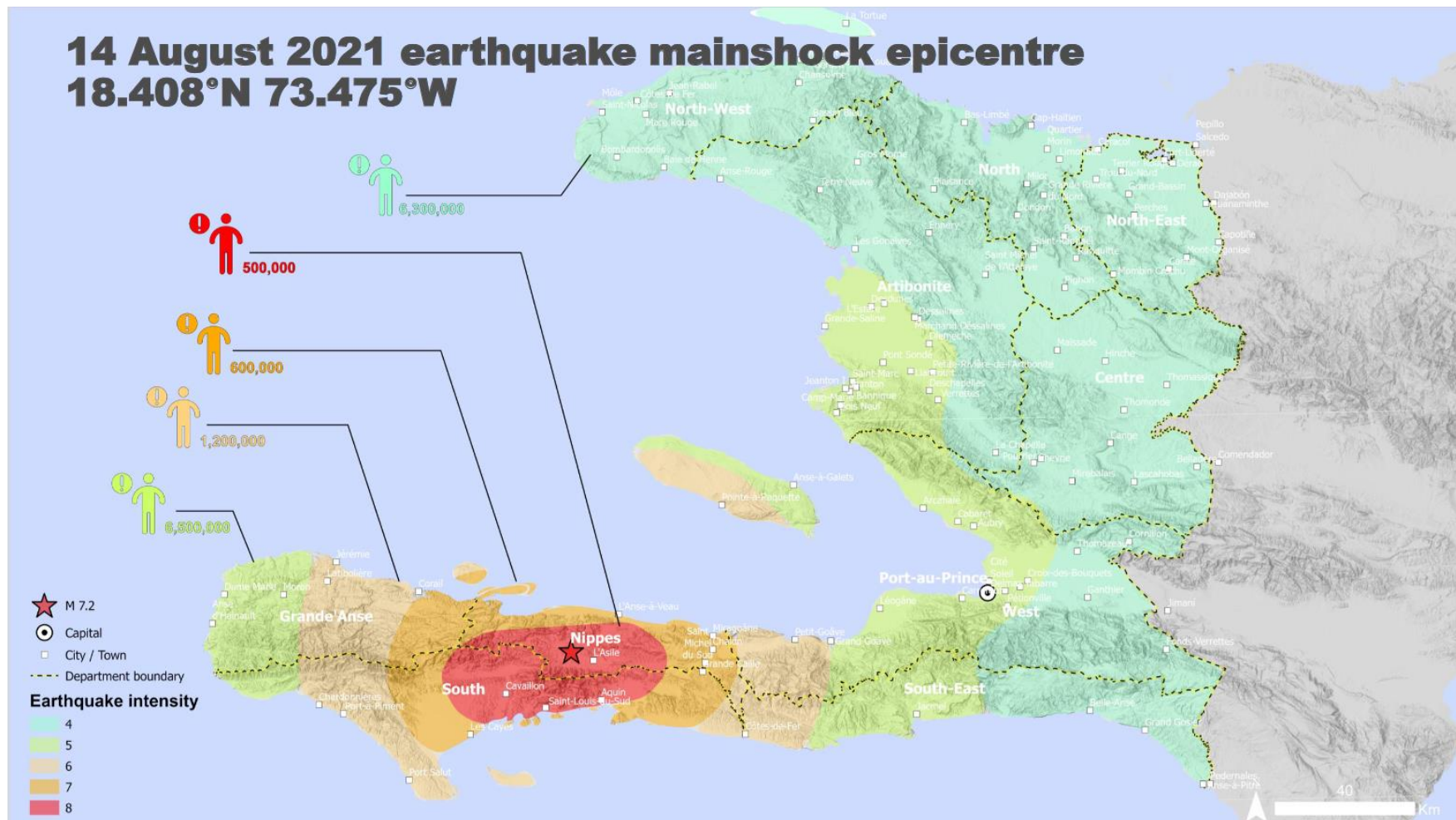
Epicenter located 12 Km
Northeast of Saint-Louis du
Sud.

Several aftershocks of
magnitude 5 and larger

14 August 2021: The
Government of Haiti declared
1-month state of emergency

Departments affected: Sud,
Nippes and Grand'Anse.

Major cities affected:
Jacmel, Jeremie Les Cayes



Source: USGS update (August 16, 2021)



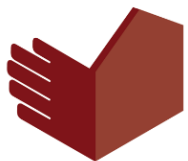
REDLAC - Shelter

Coordinando el alojamiento de emergencia
Coordinating Humanitarian Shelter
ShelterCluster.org



Situation update

- Civil Protection carrying out assessments of affectation
- Numbers of people affected, and level of damage continue to increase.
- 1,419 dead
- More than 6,900 injured
- 16 missing persons (Aug.16)
- Overland access to the western affected areas such as Les Cayes is cut.
- 2 health structures destroyed (Les Cayes)
- 2 health structures damaged (Jeremie)
- 14 schools destroyed
- 37,300 houses destroyed
- 46,000 houses damaged
- **COVID-19 Level 3: High**



REDLAC - Shelter

Coordinando el alojamiento de emergencia
Coordinating Humanitarian Shelter
ShelterCluster.org

Potential needs

Preliminary requests

- Food, water, medical aid
- **TEMPORARY SHELTER**
- 1,69 square meters of shelter
- 1,47 liters of water/day
- 49,000 100-liter wastebins



Items	Nippes	Sud	Grand'Anse	Total
Tents	10,000	30,000	20,000	60,000
Tarpaulins				

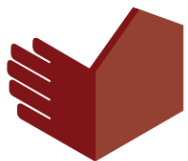


REDLAC - Shelter

Coordinando el alojamiento de emergencia
Coordinating Humanitarian Shelter
ShelterCluster.org

Landslide and hurricane risk

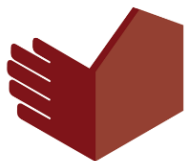
- Wind and flooding from incoming tropical storm Grace are battering displaced people and hampering rescue efforts.
- TS grace may lead to urban and small stream flooding with high potential for mudslides.
- Ongoing rescue operations will need to be put on hold while the TS hits affected areas.
- Landslides triggered by this earthquake estimated to be significant in number and extension.
- At least 150 landslides west of the town of L'Aisle in des Nippes and hundreds of landslides in the mountains and south of Beaumont in Grand'Anse.



REDLAC - Shelter

Coordinando el alojamiento de emergencia
Coordinating Humanitarian Shelter
ShelterCluster.org

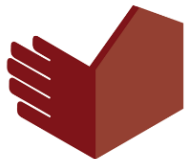
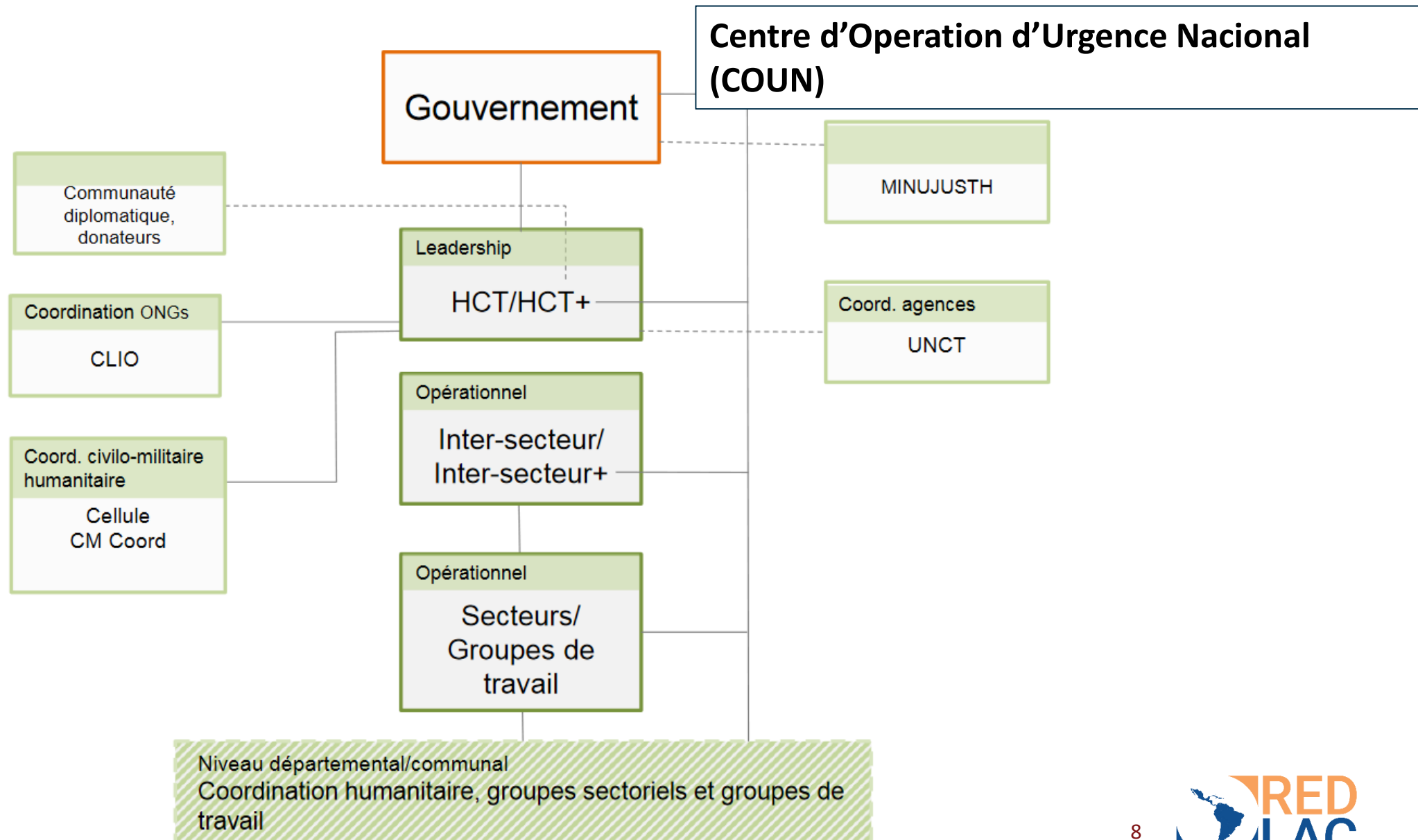
HUMANITARIAN COORDINATION SYSTEM IN COUNTRY



REDLAC - Shelter

Coordinando el alojamiento de emergencia
Coordinating Humanitarian Shelter
ShelterCluster.org

Mécanismes de coordination humanitaire en Haïti



PARTNERS UPDATES



REDLAC - Shelter

Coordinando el alojamiento de emergencia
Coordinating Humanitarian Shelter
ShelterCluster.org

Partners updates

- **TECHO**

Team operating from Dominican Republic.
Small presence in Port Au Prince.

Available for damage needs assessment and eventually shelter construction.

- **CRS**

Providing clean water, sanitation, shelter and emergency supplies. Area: Les Cayes

- **Save the Children**

NFI distribution in Des Cayes.

- **Red Cross Movement**

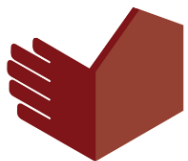
Category Orange emergency

Haitian Red Cross is present in all affected areas. Mobilizing personnel and volunteers for search and rescue, first aid, emergency healthcare and shelter.

750,000 CHF to support relief

10 million CHF to support 25,000 affected people

Potential activities: Shelter needs assessment, shelter coordination, build back better, shelter kits distribution, house repairs, monetary transfers.



REDLAC - Shelter

Coordinando el alojamiento de emergencia
Coordinating Humanitarian Shelter
ShelterCluster.org

Partners updates

- World Vision
 - Deployed in Jeremie. NFI distribution to 6000 people
- CARE.
 - NFI distribution. Waterproof tent tarps.
 - Rapid gender assessment.
- United Nations Disaster Assessment and Coordination (UNDAC) team arriving today. Negotiation for a humanitarian corridor to access affected areas and needs assessment.



REDLAC - Shelter

Coordinando el alojamiento de emergencia
Coordinating Humanitarian Shelter
ShelterCluster.org

Information management

- <https://www.sheltercluster.org/response/2021-haiti-earthquake>

Information exchange

Email subscriptions

Partners updates



REDLAC - Shelter

Coordinando el alojamiento de emergencia
Coordinating Humanitarian Shelter
ShelterCluster.org

Resources

- Haiti operations dashboard
<https://www.humanitarianresponse.info/en/operations/haiti/preparedness>
- List of humanitarian personnel deployed to Haiti
<https://docs.google.com/spreadsheets/d/1xCji-5dAFXmnJwWvYvhrAHEZhUkxKjDVW0crym55ku0/edit#gid=0>
- Preliminary Satellite Derived Earthquake Damage Assessment - 16 August 2021
https://reliefweb.int/sites/reliefweb.int/files/resources/UNOSAT_Preliminary_Assessment_Report_EQ20210814HTI_Haiti_16082021.pdf



REDLAC - Shelter

Coordinando el alojamiento de emergencia
Coordinating Humanitarian Shelter
ShelterCluster.org