


Trauma

249,238

Truma cases supported **



Nutrition

25

Stabilization centres are treating patients with severe acute malnutrition (SAM)

1,326


Patients with SAM with medical complications receiving treatment

827

Nutrition surveillance centres

1,175,887

Children under 5 screened




Integrated Management of Childhood Illness (IMCI)

295

Working health centers in IMCI

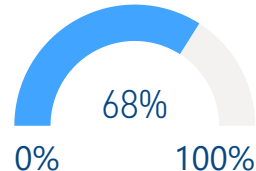
179,622

IMCI services



Immunization

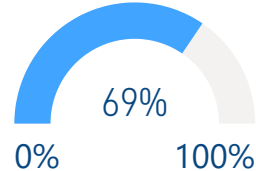
DPT3 (under 1 y)



390,484

68%

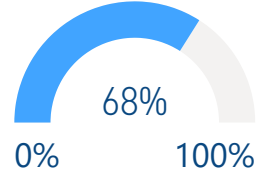
Measles 2 (1-2 y)



396,872


69%

Polio 3 (under 1 y)



392,988

68%



Mental Health

221,988


Mental health and psychosocial support interventions provided by NGOs

578

Health facilities and community centres providing MHPSS services

1,470

Schools providing MHPSS services Alerts



New born care at home (NCH)

112

Health villages working in NCH

13,944

Home visits

319

Referred mothers and new born to specialized care



Neonatal resuscitation (NR):

42

Hospitals working in NR

71,283

New born

312

Referred new born to specialized care

*The data in this infographic are for WHO's hub in Damascus only

**Based on public hospital received support from WHO



Primary Health Care

14 DoH

Public PHC facilities/DoH received medical equipment and supplies directly by WHO

24

Rolled out DoH/SARC mobile medical teams/clinics



Health Information

1,487

Field visits (assessments, supervision, monitoring and evaluation)

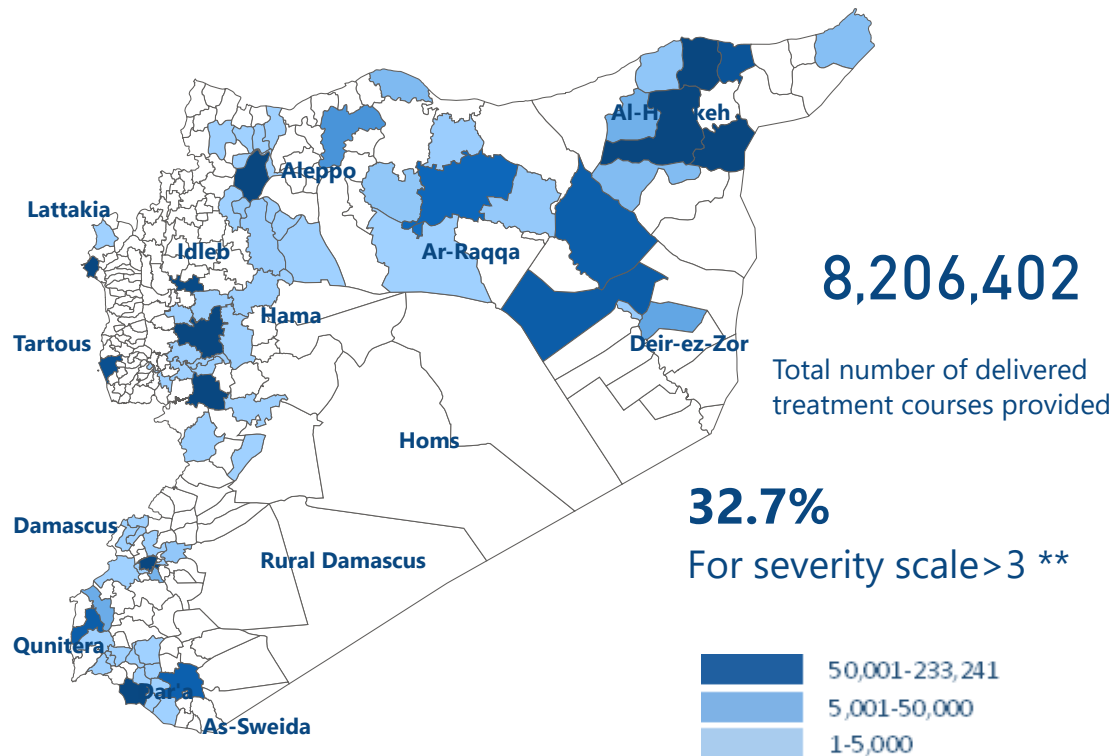


Secondary Health care

121

Hospitals supported directly by WHO with medical equipment and supplies*

Number of treatment courses provided at sub-district level

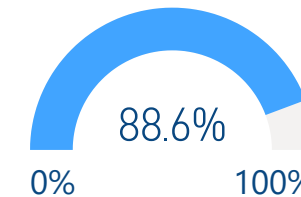


EWARS

1,359

Sentinel sites

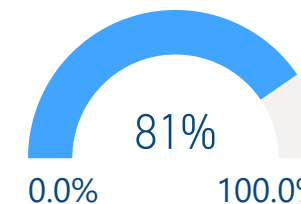
Sentinel sites submitting weekly surveillance reports



Top 5 reported morbidities

- 1- Influenza Like Illness
- 2- Acute Diarrhea
- 3- Leishmaniasis
- 4- Lice
- 5- Suspected Hepatitis (Jaundice)

Alerts investigated and responded to in a timely manner



Attacks on Health care

8

Number of Attacks

1

Health workers killed

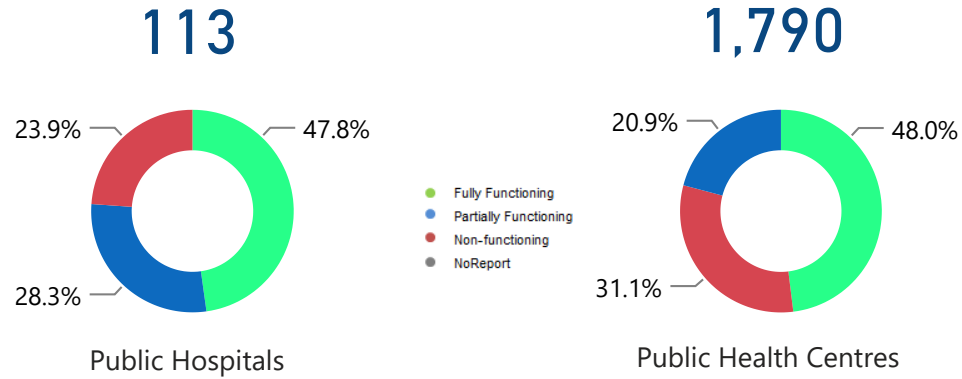
3

Health workers Injured

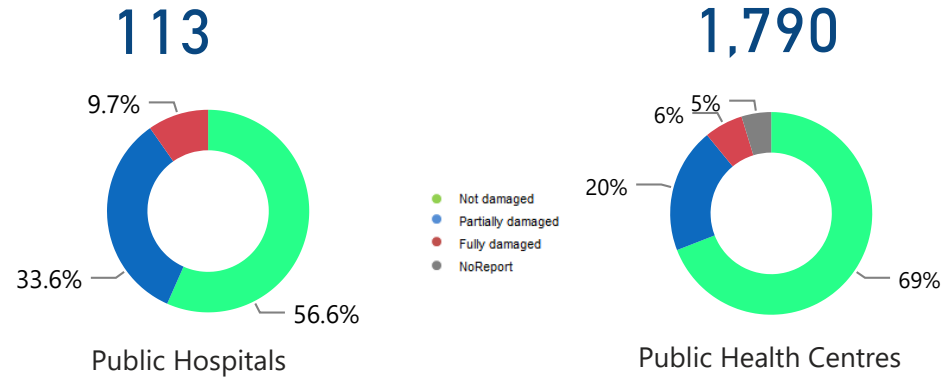
*Other undefined hospitals are supported indirectly throughout MoH and MoHE at central level

** Data source: Severity scale January 2020

HeRAMS : Functionality Status



HeRAMS : Level of damage



HeRAMS : Consultations



4,686,852
Public Hospitals



10,570,476
Public Health centres



Operations Support and logistic

1,048

Total number of regular deliveries across the country including IA convoys

1,035.87

Total weight (tons) of regular deliveries across the country including IA convoys



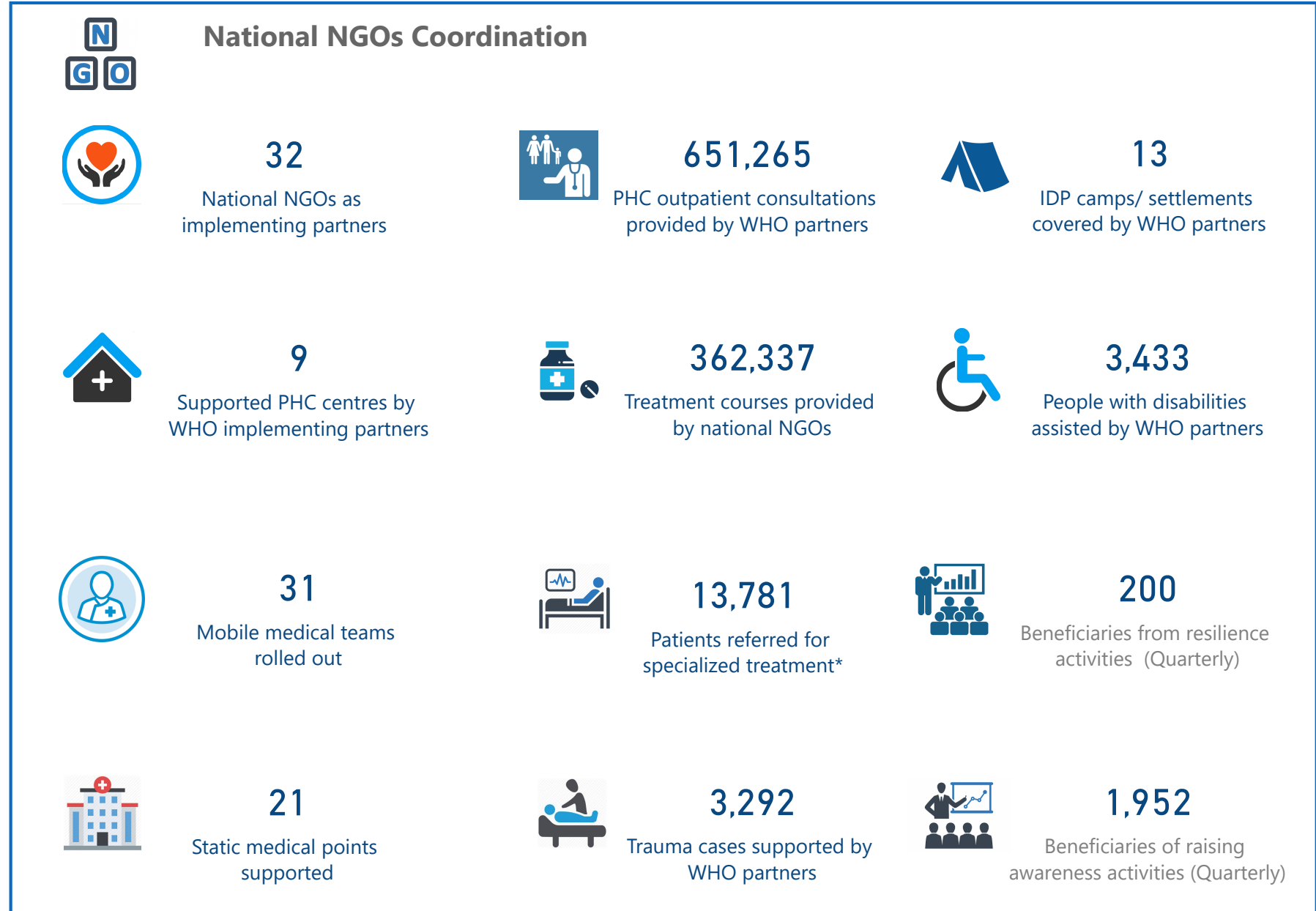
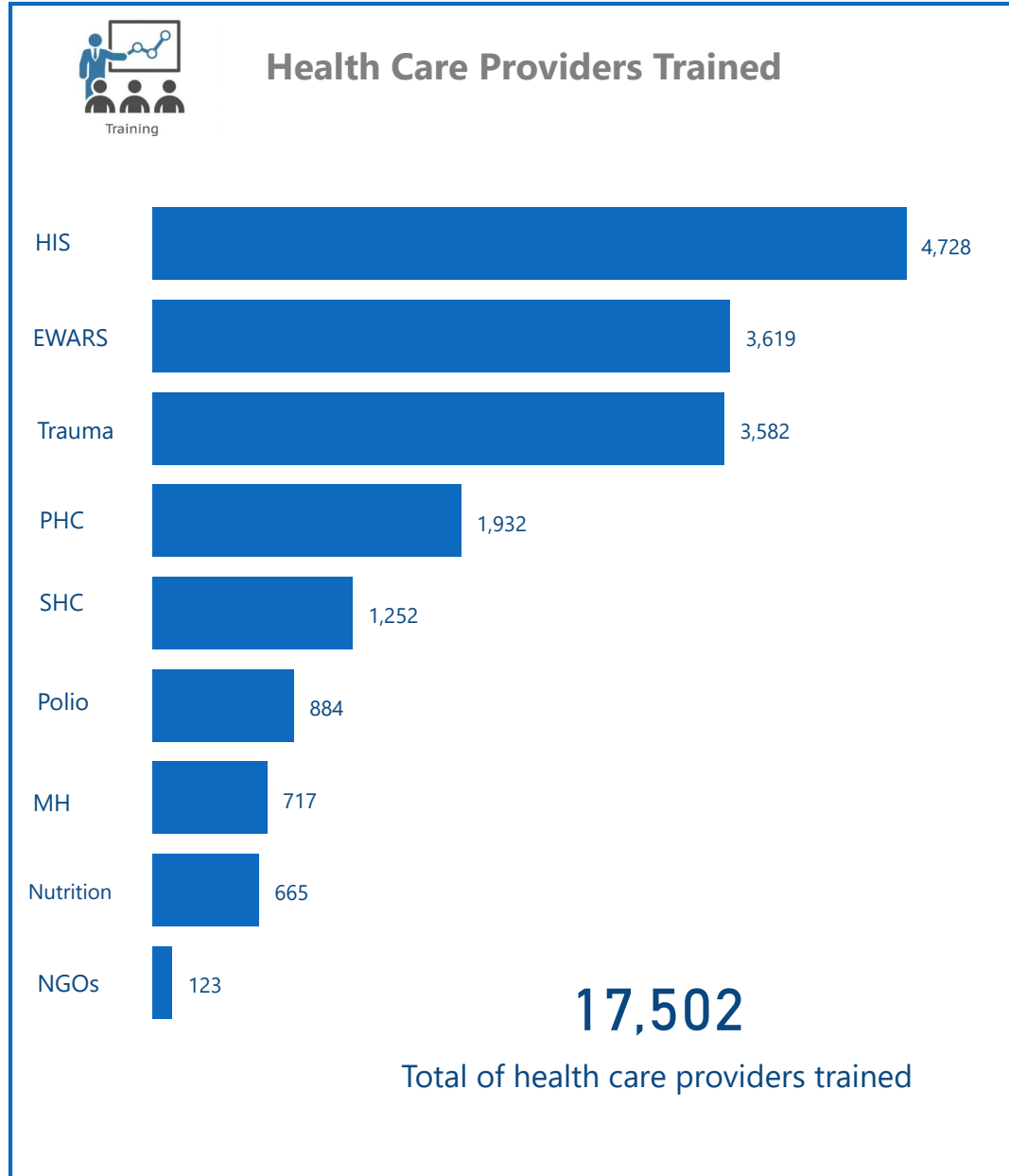
Total regular deliveries across the country

	Total weight (tons) of supplies delivered 1,035.87		
1,048 Total number of regular deliveries	394.37 Medicines	270.48 Equipment	
7,844,065 Total number of treatment courses delivered	195.65 Kits	175.37 Non-medical supplies (WASH, Nutriton, and others)	



Inter-agency convoys

	Total weight (tons) of supplies delivered 0.00		
0 Total number of IA convoys	0 Medicines	0 Equipment	
0 Total number of treatment courses delivered	0 Kits	0 Non-medical supplies (WASH, Nutriton, and others)	



The boundaries and names shown and the designations used on this map do not imply the expression of any opinion whatsoever on the part of the World Health Organization concerning the legal status of any country, territory, city or area or of its authorities, or concerning the delimitation of its frontiers or boundaries. Dotted and dashed lines on maps represent approximate border lines for which there may not yet be full agreement

Data source: WHO programs, 4Ws Map production: Health Information Management Unit, Country office, Syrian Arab Republic

* referred cases include number of births