



Photo Credit: Social Media, Bangladesh

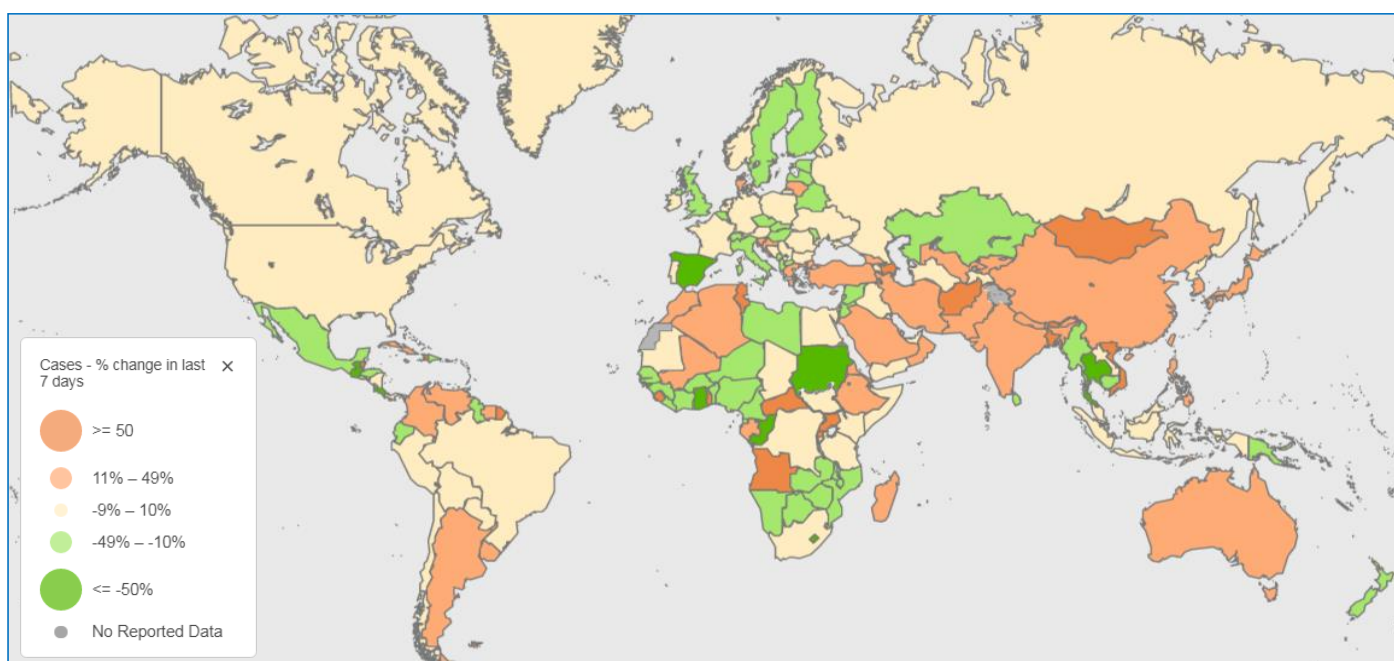
Tested	Confirmed Cases	Recovered	Death	Hotline
4 783 385	637 364	552 482	9 266	26.9 million
Test/100,000/Week	Case/100,000/Week	Recovery Rate	CFR%	AR/100,000
114.2	24.5	86.7%	1.45	374
Lab/Centres Number Tests (N=224)		PPE Stock	PoE Screening	
RT PCR Lab : 120	4 730 675	799 216	1 451 003	
GeneXpert Lab : 34	33 911	7 292 436	76 149	
Rapid Antigen : 73	18 799	268 012	7 029	
Last week daily Test average: 27 794		1 663 039	492 172	
Vaccination				
Persons registered	6 915 222			
Persons vaccinated	5 498 172			
National coverage	11.1%			
Coverage in Dhaka Metro	35.9%			

Date Source: Directorate General of Health Services, MoHFW, Bangladesh

**1. Global Situation**

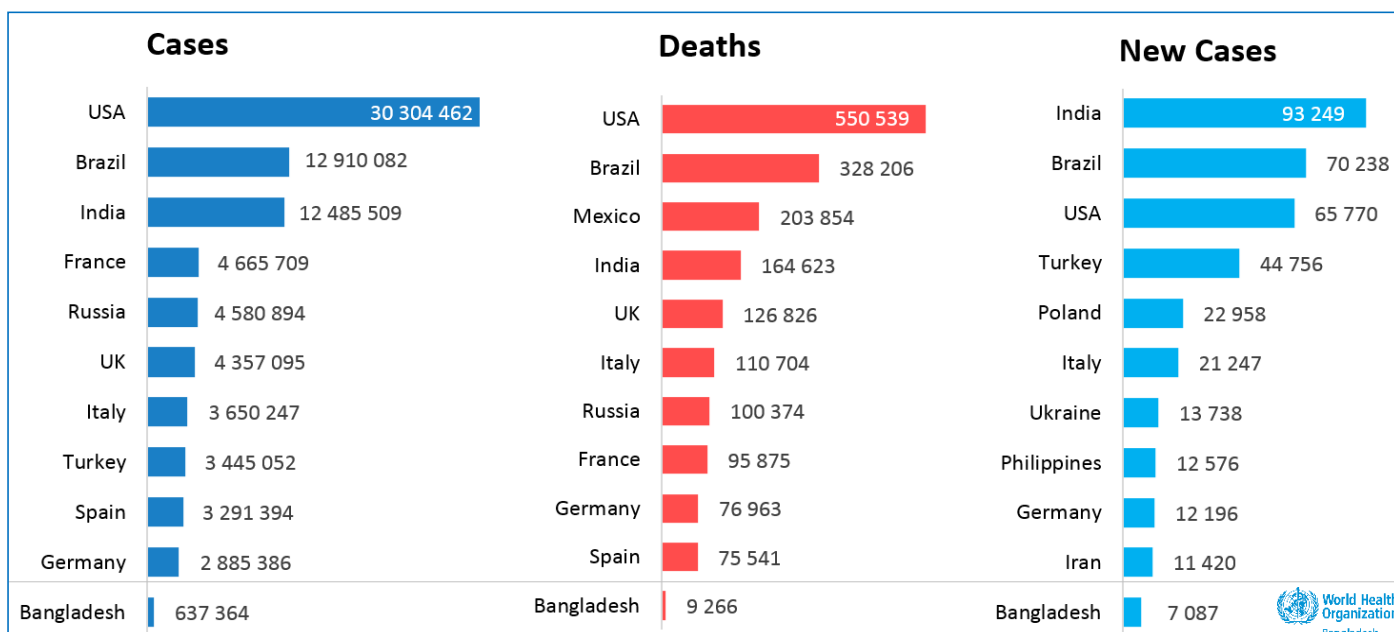
Globally, as of 8:34 PM, on 4 April 2021, there have been **130 422 190** confirmed cases of COVID-19, including **2 842 135** deaths, received by the WHO from national authorities. The USA, the world’s worst-hit country, has counted **30 304 462** (65 770) cases with **550 539** (2 655) deaths, followed by Brazil with **12 910 082** (70 238) cases and **328 206** (2 922) deaths. India reported the third-highest cases of **12 485 509** (93 249) and fourth-highest deaths of **164 623** (513); Mexico reported the third-highest death of **203 854** (190) at the same cut off time.

*The map below shows the weekly change of COVID-19 cases around the globe, as of 04 APR 2021*



Over **4 million** new cases were reported last week, a **4.3%** increase compared to the week before. Weekly cases increased the highest in the South-East Asia Region (**35.5%**) followed by the Western Pacific Region (**22.1%**), Eastern Mediterranean Region (**9.8%**), and Region of the Americas (**2.2%**); weekly cases decreased in African Region by **5.5%**, and the European Region by **3.5%**. Globally, 106 (**46%**) countries/territories are seeing declines while 93 (**40%**) are experiencing increasing numbers of new cases; the remaining 32 (**14%**) have no growth during the reporting week.

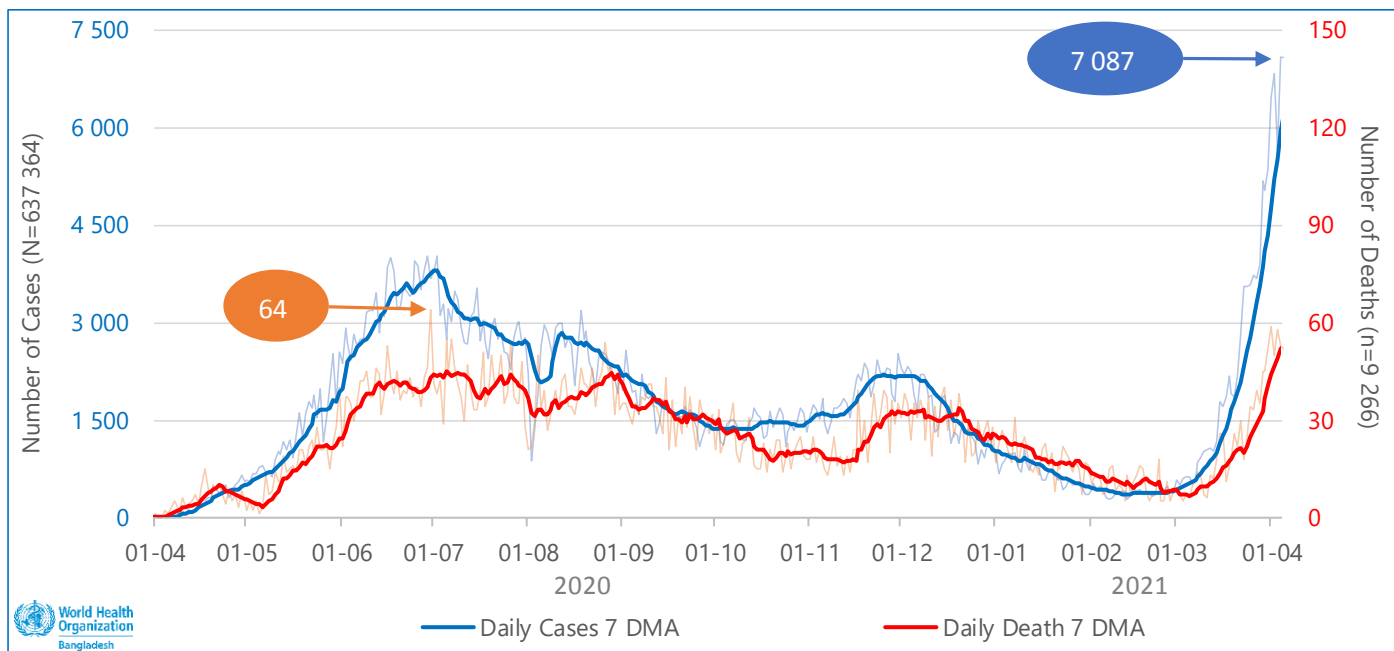
*The figure below shows top-ranked countries for total Cases, Deaths, and New cases of COVID-19, 01 JAN 2020 – 04 APR 2021*



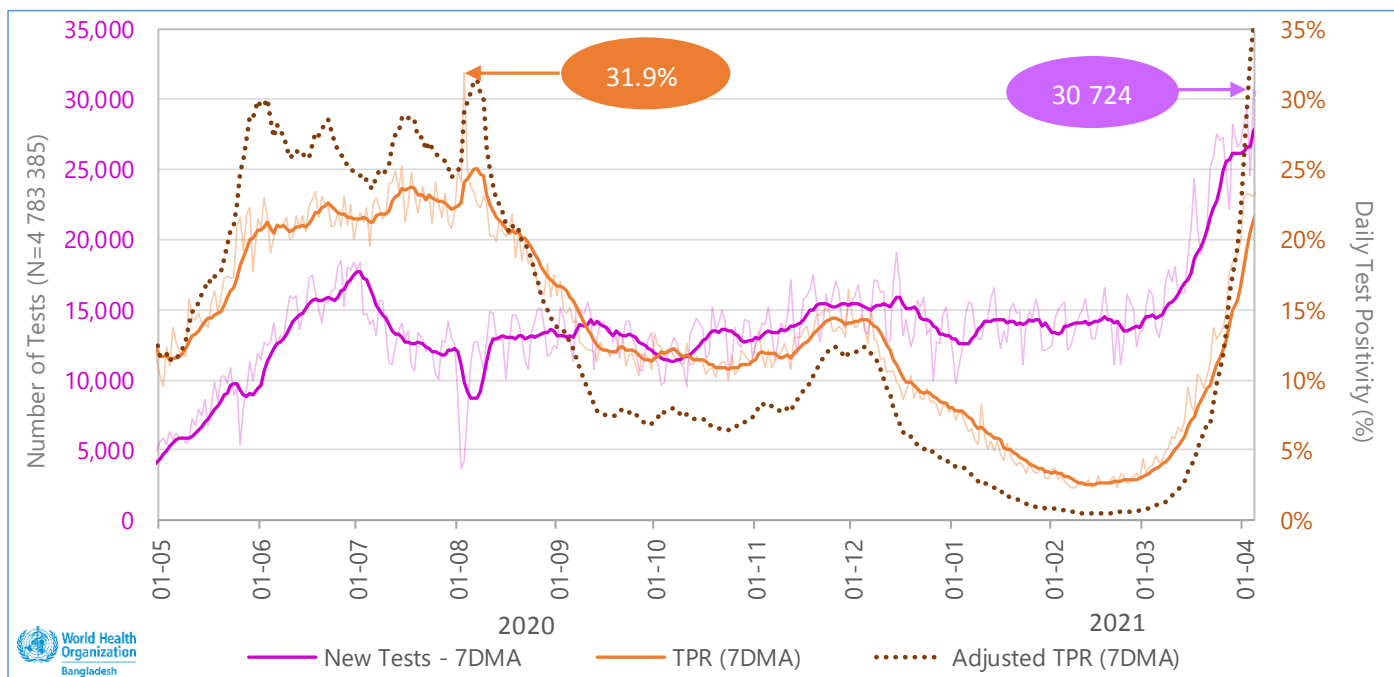
**2. Bangladesh Situation**

Between 8 March 2020 and 04 April 2021, according to the DGHS Press Release <<https://corona.gov.bd/press-release>> there were six hundred thirty-seven thousand, three hundred sixty-four (637 364) COVID-19 cases confirmed by RT-PCR, GeneXpert, and Rapid Antigen tests including nine thousand, two hundred sixty-six (9 266) related deaths (CFR 1.45%). Bangladesh is among the top 33 countries and accounts for 0.49% of the COVID-19 cases of the world.

The figure below is showing seven days moving average of COVID-19 cases and deaths, as of 04 APR 2021



The figure below is showing seven days moving average of COVID-19 tests and test positivity, as of 28 MAR 2021



In the past week (epidemiological week 13, 2021), Bangladesh reported 41 650 new cases, a 67.7% increase compared to last week; the case per 100 000 population per week is 24.5. The country reported 362 new death, a 69.2% increase; death per 100 000 per week is 0.2. The weekly new test is 194 555 (daily average: 27 794), an 8.3% increase than the week before; tests per 100 000 per week is 114; the weekly average test positivity rate (TPR) is 21.4%, TPR increased by 54.9% from last week. Overall Case Fatality Ratio (CFR) is 1.45% which was 1.49% last week.

### 3. Surveillance & Laboratory

As of 04 April 2021, **70.8%** of reported cases were from Dhaka division (**60.8%** at Dhaka city), Chattogram – **12.3%**, Rajshahi – **4.3%**, Khulna – **4.2%**, Sylhet – **2.7%**, Rangpur – **2.6%**, Barishal – **1.8%** and the lowest **1.3%** from Mymensingh division. While **57.2%** of the reported death were from Dhaka division (**32.3%** at Dhaka city), Chattogram – **18.2%**, Khulna – **6.4%**, Rajshahi – **5.4%**, Rangpur – **4.1%**, Sylhet – **3.5%**, Barishal – **3.0%**, and the lowest **2.2%** from Mymensingh division.

The table below is showing the distribution of COVID-19 case and death as of 04 APR 2021

Division	08 MAR 2020 – 04 APR 2021			Week 13, 2021 (29 MAR – 04 APR 2021)		
	Cases	Death	CFR (%)	Cases	Weekly Change	Death
Dhaka	451 129	5 300	1.17%	35 016	69%	251
Chattogram	78 508	1 684	2.15%	3 720	51%	51
Rajshahi	27 197	502	1.85%	722	82%	15
Khulna	27 075	590	2.18%	722	109%	18
Sylhet	17 179	327	1.90%	623	42%	10
Rangpur	16 515	380	2.30%	230	35%	8
Barishal	11 582	279	2.41%	448	84%	4
Mymensingh	8 179	204	2.49%	169	72%	5
<b>National</b>	<b>637 364</b>	<b>9 266</b>	<b>1.45%</b>	<b>41 650</b>	<b>68%</b>	<b>362</b>

In the epi-week 13, the Khulna division has the highest growth of weekly new cases, **109.3%** (722 this week and 345 in the week before), followed by Barishal **83.6%** (448 and 244 respectively) and Rajshahi **81.9%** (722 and 397 respectively). The Dhaka division reported the highest number (35 016) of new cases, **33** new cases per 100 000/week with an **increase** of **69.3%**; and the Mymensingh division reported the lowest number (169) of new cases, **1** new case per 100 000/week, with an **increase** of **72.4%** compared to last week.

The highest number of weekly cases (**41 650**) reported in the epi-week **13**, 2021 (29 MAR – 04 APR), and the highest daily cases 7 087 was recorded on 04 April 2021. The highest weekly death (**314**) recorded on **13**, 2021 (29 MAR – 04 APR) with the highest daily death of 64 on 30 June 2020. In the reported week, COVID-19 daily average cases increased to **5 950** from 3 548 in the week before.

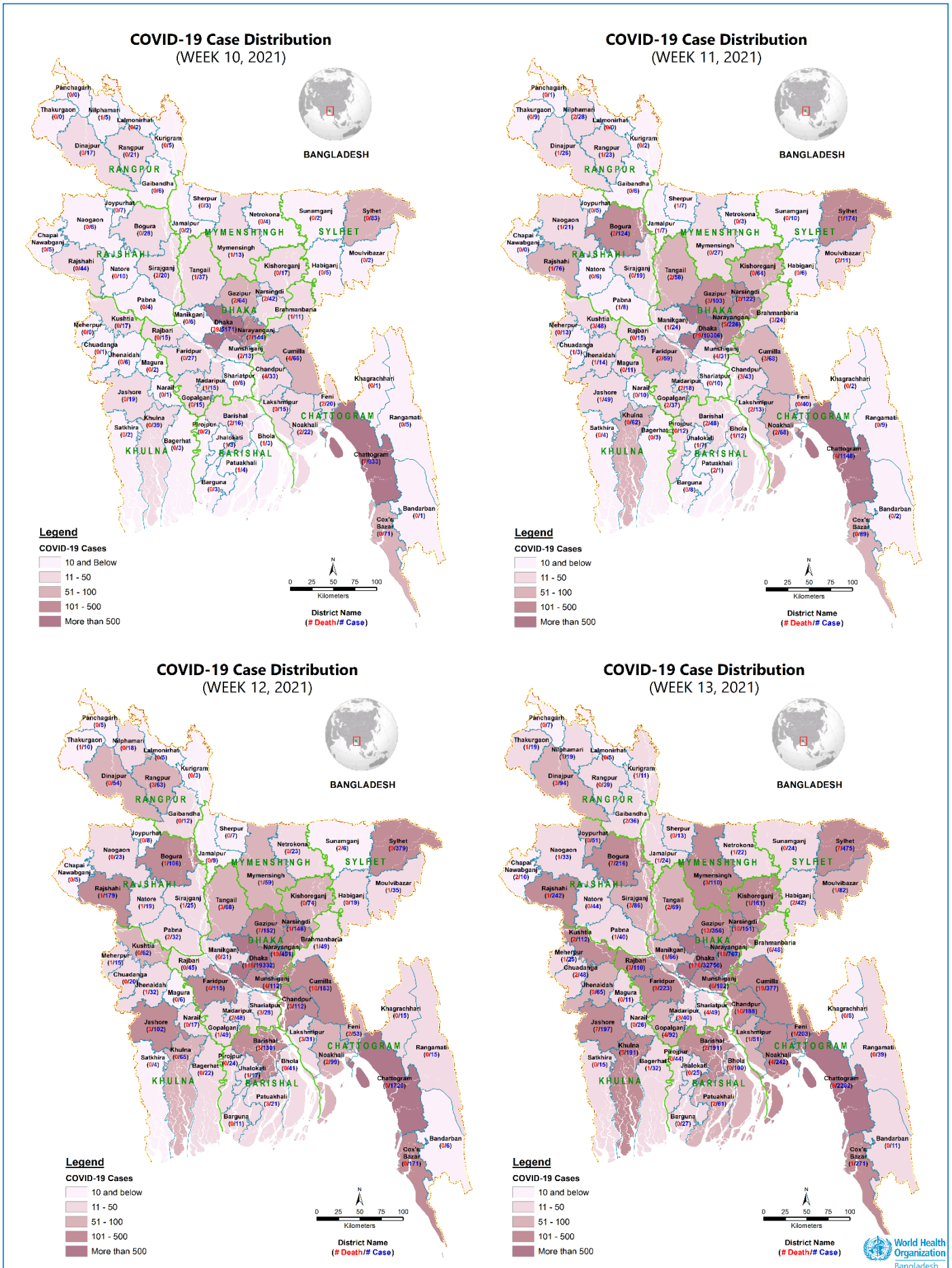
Out of **637 364** COVID-19 cases registered as of 04 April 2021, **86.7%** (552 482) recovered, **11.9%** (75 616) were active cases and the remaining died (previously mentioned as CFR). In epidemiological week 13, the average number of COVID-19 active cases increased by **40.2%** compared to the week before (**64 171** and 45 770 respectively); during the same time, recovery increased by **22.2%** (**16 541** in the current week and 13 536 in the week before).

As of 04 April 2021, according to the DGHS Press Release, **4 783 385** COVID-19 tests (RT-PCR **98.9%**, GeneXpert **0.7%**, and Rapid Antigen **0.4%**) were conducted in Bangladesh with an overall positivity rate of 13.32% (**23.07%** in the last 24 hours) by **227** laboratories/test centres. So far, **75.4%** of the samples (3 604 520) have been tested for COVID in government facilities (RT-PCR **52/120**, GeneXpert **32/31**, and Rapid Antigen **73/73**).

Three GeneXpert labs (Hatiya Upazila Health Complex, Noakhali; Kalia Upazila Health Complex, Narail; and Kalapara Upazila Health Complex, Patualhali) have been added to the network of COVID-19 testing facilities during the last week.

As of the reporting date, the test per case is **7.5**, which indicates the number of tests required to identify 1 case.

The map below is showing the distribution of cases from 08 MAR to 04 APR 2021, Bangladesh



#### 4. Contact Tracing (CT)

According to the IEDCR Go.Data platform, as of 04 April 2021, a total of 59 360 confirmed cases had been entered into the system for case investigation and contact listing. During the week of 29 March – 04 April 2021 alone, 15 810 were uploaded and newly assigned to Outbreak Investigation Officers (OIOs). This week, the OIOs successfully reached 1 463 cases and completed 1 178 Case Record Forms (CRF). **1.1%** of the new cases (173/15 810) had a history of COVID-19 vaccination.

As of 04 April 2021, there are 12 682 total active contacts listed in Go.Data and currently within their 14-day follow-up period. During the reporting week alone, 4,980 new contacts were listed. Of those registered contacts who were due for either a 7- or 14-day follow-up by a contact tracer during this reporting period, **45.0%** (1 844/4 098) successfully received their 7-day follow-up call, and **52.6%** (1 811/3 443) received their 14-day follow up call. Among newly listed contacts during the reporting period, **154** were reported to have been vaccinated with 1<sup>st</sup> dose of COVID-19.

**The figure below is showing the divisional breakdowns of the Key Indicators as captured through IEDCR Go.Data platform, 22 MAR – 04 APR 2021**

Division	Case Investigation & 14d Follow Up - Last 7d							Contact Listing & 7/14d Follow Up - Last 7d						
	Newly Assigned Cases	From Known Contact	Reached	CRF Filled	Needing 14d Case Followup	Completed 14d Case Followup	Case Vaccinated	Currently Active Contacts	Newly Listed Contacts	Needing 7d Followup	Completed 7d Followup	Needing 14d Followup	Completed 14d Followup	Contact Vaccinated
Dhaka	11605	6	791	550	18839	461	206	5357	1401	1443	357	1284	431	41
Chattogram	296	13	290	261	5994	89	33	2077	1083	1050	947	823	747	43
Rajshahi	359	0	60	53	987	29	10	1007	165	103	27	119	71	9
Barishal	339	0	26	25	348	27	2	771	161	186	24	192	34	0
Khulna	325	0	89	77	642	72	0	362	150	127	0	246	194	0
Sylhet	318	0	0	0	581	0	0	597	11	148	0	155	63	0
Rangpur	302	0	110	115	382	111	9	887	326	351	0	211	0	0
Mymensingh	264	0	95	95	246	90	12	550	352	293	248	178	134	0
NA	1	0	2	2	16	1	1	1074	474	397	241	235	137	19

#### 5. Points of Entry (PoE) & Quarantine

In the reported week (week 13, 2021), the number of international flights arrived at three international airports has increased by **3.8%** than the week before (303 and 292 flights, respectively), and the number of incoming passengers has decreased by **1.1%** (37 248 and 37 665 persons, respectively). In the reported week, **624** travellers were sent to Institutional Quarantine, and **41 872** sent for Home quarantine after passenger screening at the Points of Entry.

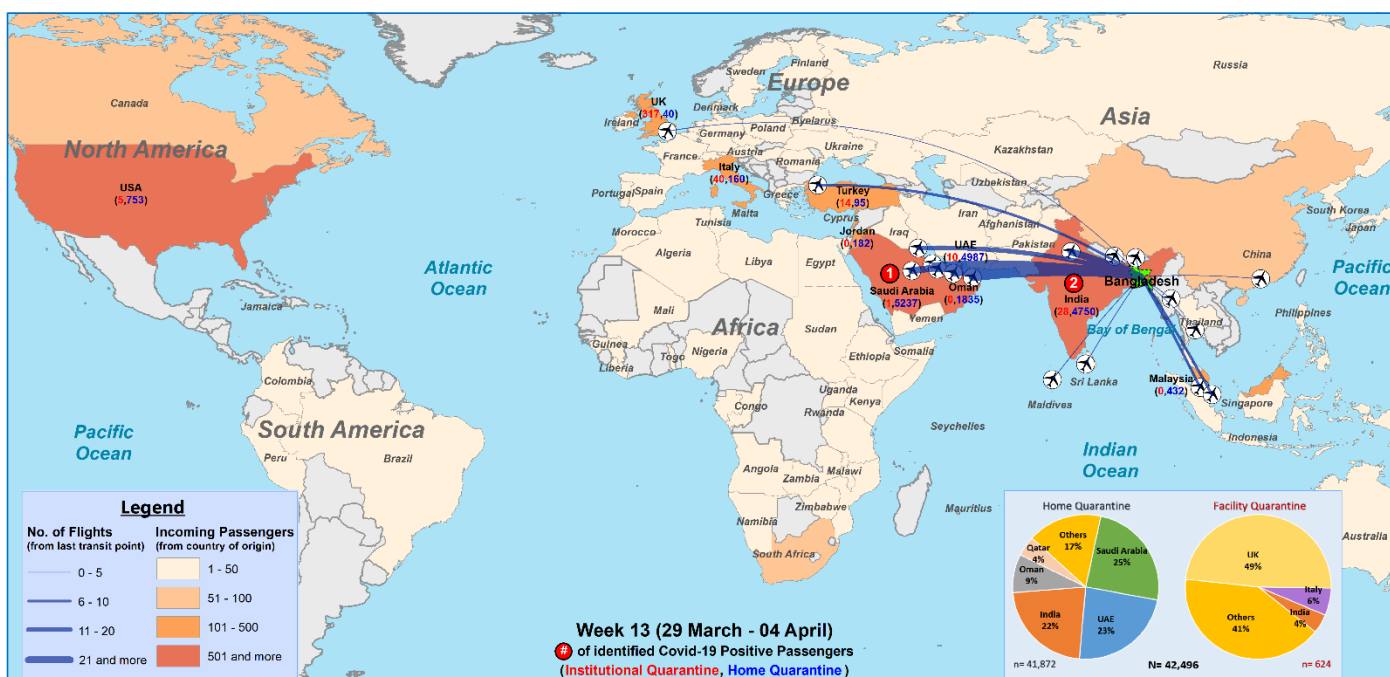
**The table below is showing the Quarantine status of incoming travellers as captured through PoE Surveillance, 29 MAR – 04 APR 2021, Bangladesh**

Points of Entry	Home Quarantine	Facility Quarantine	Total Traveller
HSIA, Dhaka	31 690	392	32 082
SAIA, Chattogram	4 725	7	4 732
OIA, Sylhet	241	193	434
Benapole LC, Jashore	5 186	32	5 218
Akhaura LC, Brahmanbaria	30	0	30
<b>Total</b>	<b>41 872</b>	<b>624</b>	<b>42 496</b>

\* HSIA: Hazrat Shahjalal International Airport, SAIA: Shah Amanat International Airport, OIA: Osmani International Airport, LC: Land Crossing

According to DGHS, as of 04 April 2021, the country’s current institutional quarantine capacity is represented by **629** centres across the 64 districts, receiving **31 991** persons. A total of **52 407** individuals were placed in quarantine facilities, and 48 331 (**92.2%**) of them have already been released. Over the same period, a total of **106 636** individuals were isolated in designated health facilities, and 93 766 (**87.9%**) of them were released.

**The map below is showing the geographical distribution of incoming flights and travellers captured through PoE Surveillance, week 13 (29 MAR – 04 APR), 2021, Bangladesh**



During the reporting week, three (3) positive case (2 travelled from India & 1 travelled from Saudi Arabia) was identified at the IHR designated PoEs (Benapole Land port & Hazrat Shahjalal International Airport) of the country. Out of individuals sent to Institutional Quarantine after passenger screening at active PoEs during the week, **67%** travelled from the UK, **8%** from Italy, **6%** from India, **3%** from Turkey, **3%** from Germany, **2%** each from UAE, Portugal, Qatar and the Netherlands, and the remaining 5% from other countries.

**6. Case Management and Infection Prevention & Control**

According to DGHS, as of 04 April 2021, there are **9 532** general beds dedicated to COVID-19 treatment countrywide, **47.2%** (4 496) of which are occupied. **34.4%** of the dedicated general beds are in Dhaka City, **92.5%** (3 033/ 3 278) of them are occupied. There are **579** dedicated ICU beds in the country, of which **66.3%** (384) are occupied. **49.9%** of the dedicated ICU beds are in Dhaka City, of which **89.6%** (259/289) were occupied at the same cut-off time.

**The table below is showing the bed occupancy in COVID-19 dedicated facilities, week 11 & 13, 2021**

	National			Dhaka		
	04 APR 2021	21 MAR 2021	Change	04 APR 2021	21 MAR 2021	Change
General Beds	9 532	10 474	-9.0%	3 278	3 281	-0.1%
Bed Occupancy	47.2%	26.5%	77.9%	92.5%	63.5%	45.8%
ICU	579	568	1.9%	289	291	-0.7%
ICU Occupancy	66.3%	51.05%	29.9%	89.6%	72.2%	24.2%

## 7. Vaccination

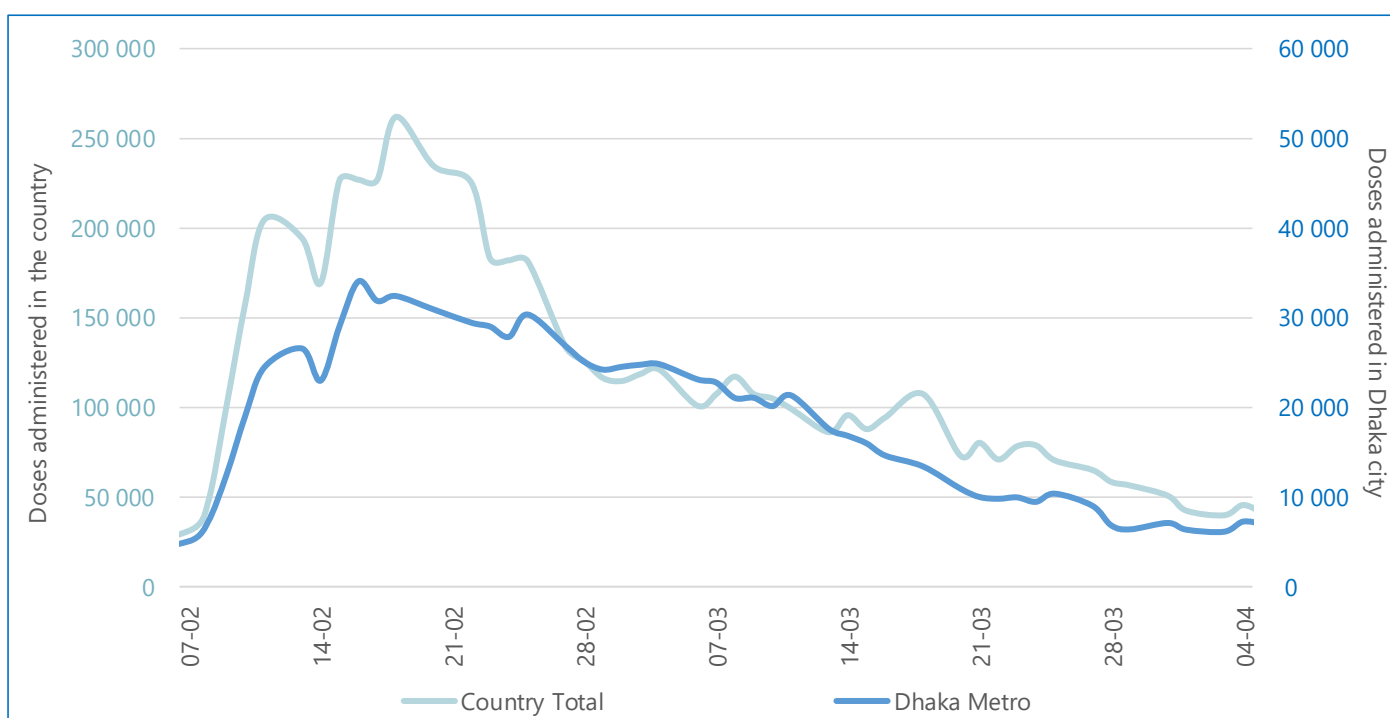
Since the launch of the COVID-19 vaccination campaign, as of 04 April 2021, **5 498 172** (92%) doses of vaccine were administered out of the 6 million doses distributed across the country. A total of 3 412 003 (**62.1%**) males and 2 086 169 (**37.9%**) females received their 1st dose of vaccine. So far, **11.1%** of the country's eligible population has been vaccinated, while in Dhaka metropolitan the coverage is **35.9%**.

**The table below shows the utilization of COVID-19 Vaccine doses, 27 JAN – 04 APR 2021**

Division	No. of Vaccine Doses supplied	No. of Vaccine Doses utilized	Utilization Rate (%)*	% of population vaccinated**
Barishal	243 000	239 262	<b>98%</b>	8.4%
Chattogram	1 346 000	1 107 872	<b>82%</b>	11.3%
Dhaka	1 793 000	1 697 954	<b>95%</b>	13.5%
Khulna	703 000	702 670	<b>100%</b>	13.0%
Mymensingh	291 000	270 792	<b>93%</b>	7.2%
Rajshahi	662 000	629 878	<b>95%</b>	9.9%
Rangpur	600 000	564 353	<b>94%</b>	10.4%
Sylhet	362 000	285 391	<b>79%</b>	8.4%
<b>Total</b>	<b>6 000 000</b>	<b>5 498 172</b>	<b>92%</b>	<b>11.1%</b>

\* Wastage rate not considered, \*\*Eligible population >40 years old

**The figure below shows the trend of the daily number of COVID-19 vaccine administered, as of 04 APR 2021**

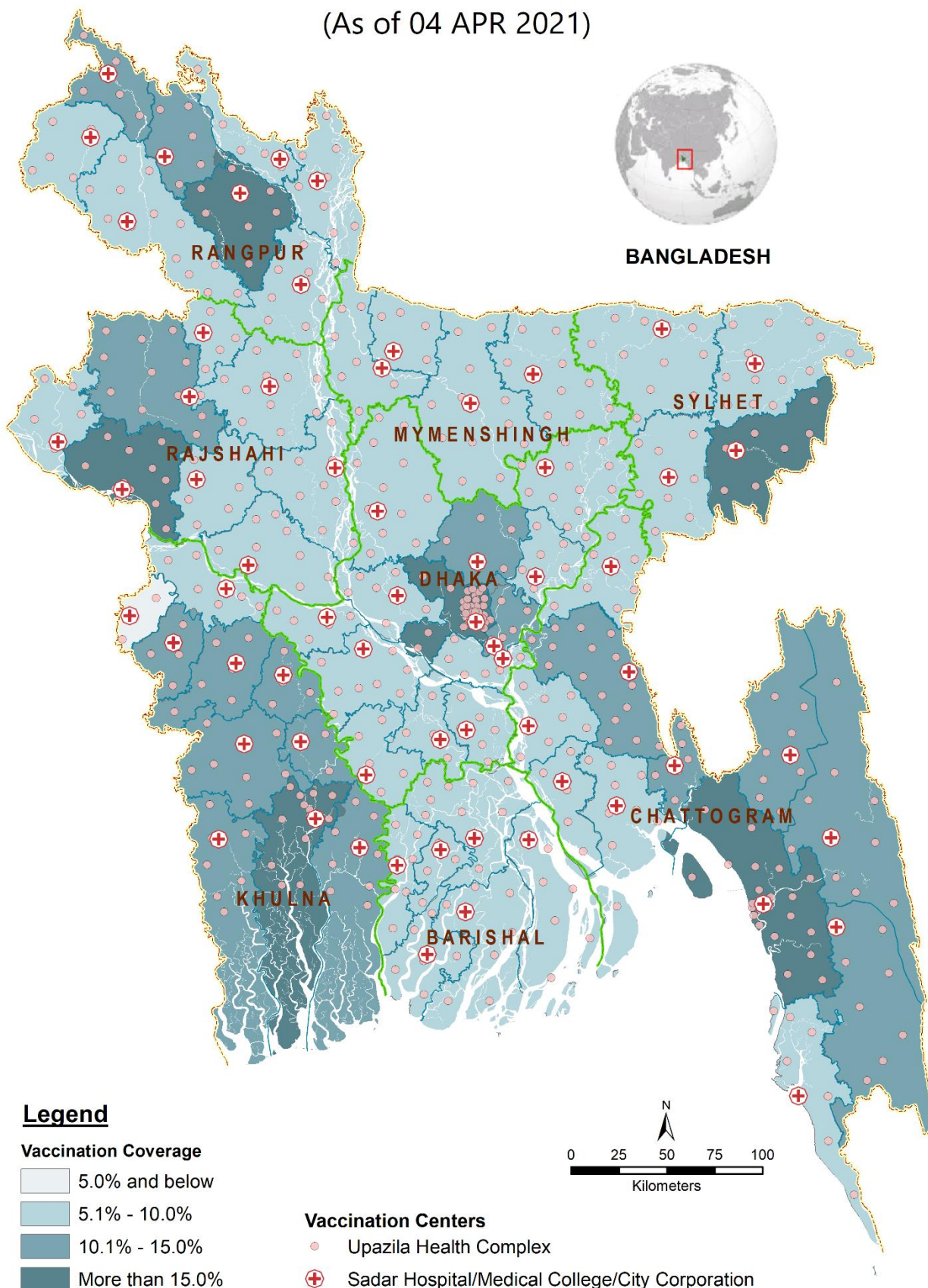




The map below is showing COVID-19 Vaccination coverage, as of 04 APR 2021

## COVID-19 Vaccination Coverage (1st Dose)

(As of 04 APR 2021)



## 8. Useful links for more information

- WHO Bangladesh COVID-19 Situation Reports:  
[https://www.who.int/bangladesh/emergencies/coronavirus-disease-\(covid-19\)-update/coronavirus-disease-\(covid-2019\)-bangladesh-situation-reports](https://www.who.int/bangladesh/emergencies/coronavirus-disease-(covid-19)-update/coronavirus-disease-(covid-2019)-bangladesh-situation-reports)
- WHO Cox's Bazar Situation reports:  
<https://ln2.sync.com/dl/f33b85a60/99r3nuhb-zebna3tg-kun4acy3-mvyxqv56>
- COVID-19 Situation in the WHO South–East Asia Region:  
<https://experience.arcgis.com/experience/56d2642cb379485ebf78371e744b8c6a>
- WHO global Weekly Epidemiological Update and Weekly Operational Update:  
<https://www.who.int/emergencies/diseases/novel-coronavirus-2019/situation-reports/>
- WHO Bangladesh awareness and risk communication materials in Bengali:  
[https://www.who.int/bangladesh/emergencies/coronavirus-disease-\(covid-19\)-update](https://www.who.int/bangladesh/emergencies/coronavirus-disease-(covid-19)-update)
- COVID-19 WHO Online Training modules:  
<https://www.who.int/emergencies/diseases/novel-coronavirus-2019/training/online-training>
- COVID-19 updates from the Directorate General of Health Services, Ministry of Health and Family Welfare, Government of The People's Republic of Bangladesh:  
<https://dghs.gov.bd/index.php/en/component/content/article?id=5393>
- Institute of Epidemiology, Disease Control and Research (IEDCR):  
<https://iedcr.gov.bd/covid-19/covid-19-general-information>