

July 2022

Core epidemiology slides

Global estimates for adults and children | 2021

People living with HIV

38.4 million [33.9 million–43.8 million]

New HIV infections in 2021

1.5 million [1.1 million–2.0 million]

Deaths due to AIDS in 2021

650 000 [510 000–860 00]

About 4000 new HIV infections (adults and children) a day | **2021**

- **About 58% are in sub-Saharan Africa**
- **About 430 are among children under 15 years of age**
- **About 3600 are among adults aged 15 years and older, of whom:**
 - almost 49% are among women
 - about 31% are among young people (15–24)
 - about 19% are among young women (15–24)

Global estimates for children (<15 years) | 2021

Children living with HIV	1.7 million	[1.3 million–2.1 million]
---------------------------------	--------------------	---------------------------

New HIV infections in 2021	160 000	[110 000–230 000]
-----------------------------------	----------------	-------------------

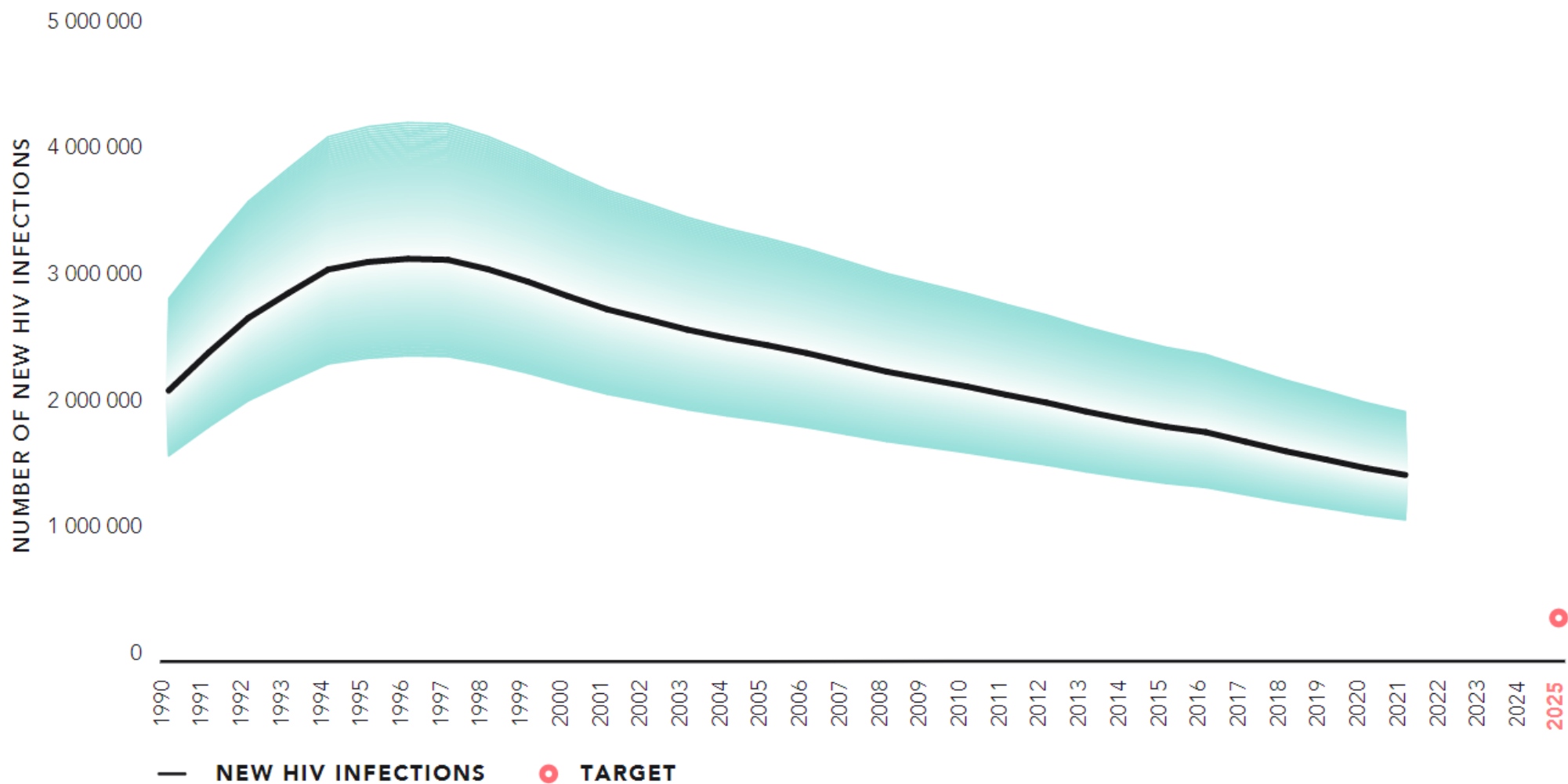
Deaths due to AIDS in 2021	98 000	[67 000–140 000]
-----------------------------------	---------------	------------------

Regional HIV and AIDS statistics and features | 2021

	Adults and children living with HIV	Adults and children newly infected with HIV	Adult and child deaths due to AIDS
Eastern and southern Africa	20.6 million [18.9 million–23.0 million]	670 000 [530 000–900 000]	280 000 [230 000–360 000]
Western and central Africa	5.0 million [4.5 million–5.6 million]	190 000 [140 000–270 000]	140 000 [99 000–210 000]
Middle East and North Africa	180 000 [150 000–210 000]	14 000 [11 000–38 000]	5100 [3900–6900]
Asia and the Pacific	6.0 million [4.9 million–7.2 million]	260 000 [190 000–360 000]	140 000 [99 000–210 000]
Latin America	2.2 million [1.5 million–2.8 million]	110 000 [68 000–150 000]	29 000 [18 000–42 000]
Caribbean	330 000 [290 000–380 000]	14 000 [9500–18 000]	5700 [4200–7600]
Eastern Europe and central Asia	1.8 million [1.7 million–2.0 million]	160 000 [130 000–180 000]	44 000 [36 000–53 000]
Western and central Europe and North America	2.3 million [1.9 million–2.6 million]	63 000 [51 000–76 000]	13 000 [9400–16 000]
GLOBAL	38.4 million [33.9 million–43.8 million]	1.5 million [1.1 million–2.0 million]	650 000 [510 000–860 000]

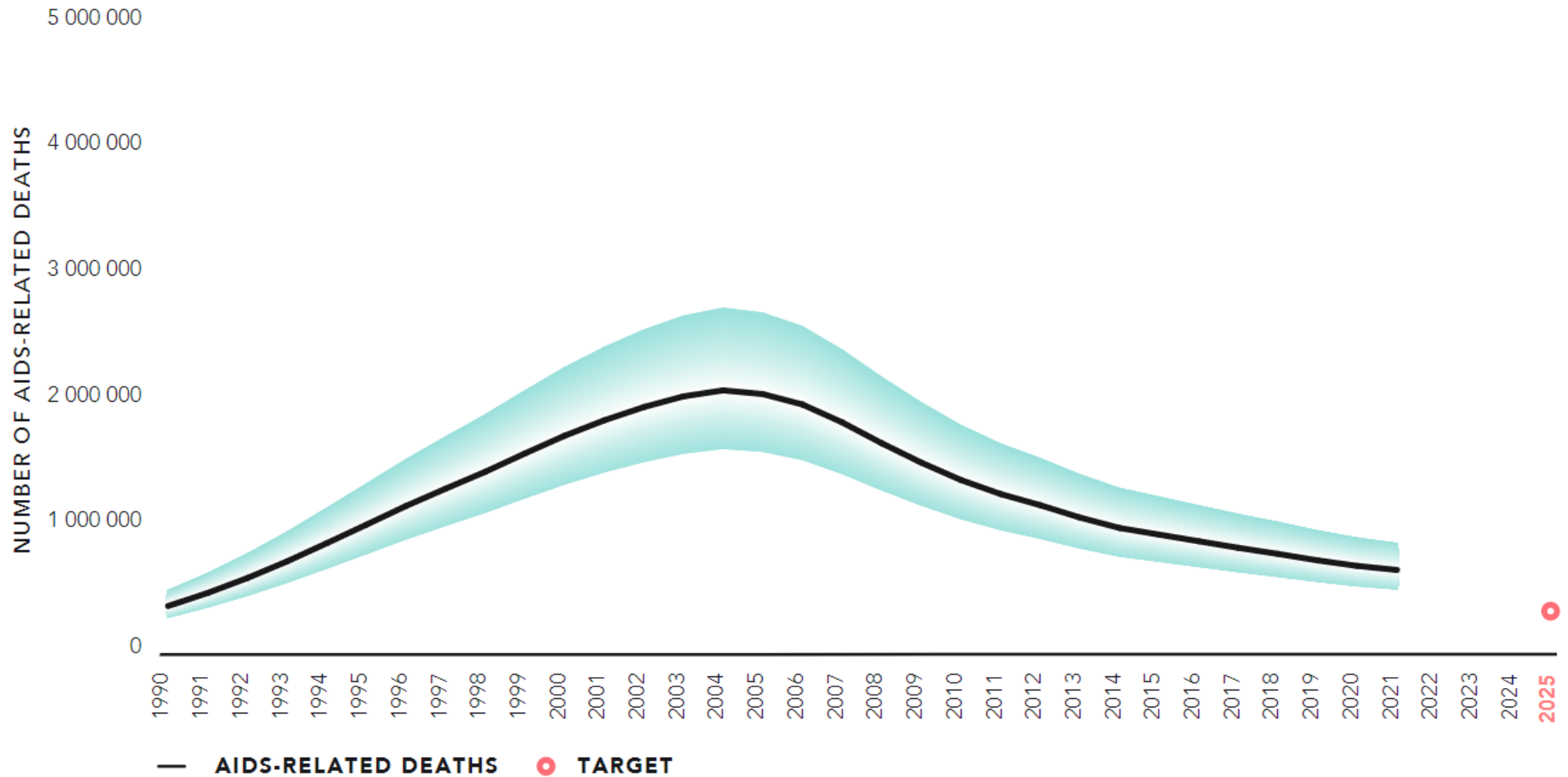
The ranges around the estimates in this table define the boundaries within which the actual numbers lie, based on the best available information.

FIG. 1.01a. Number of new HIV infections, global, 1990–2021, and 2025 target



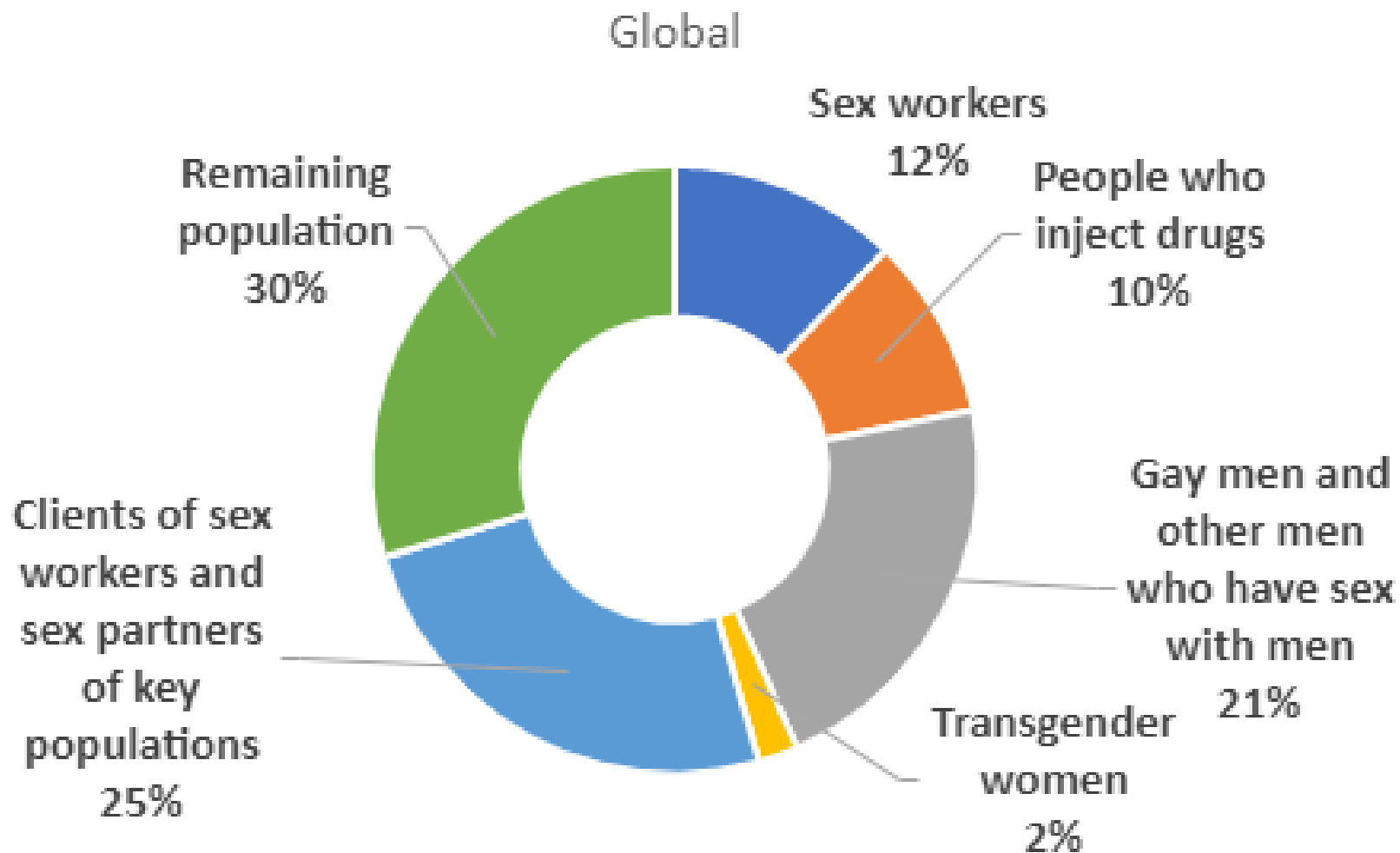
Source: UNAIDS epidemiological estimates, 2022 (<https://aidsinfo.unaids.org/>).

FIG. 1.02a. Number of AIDS-related deaths, global, 1990–2021, and 2025 target



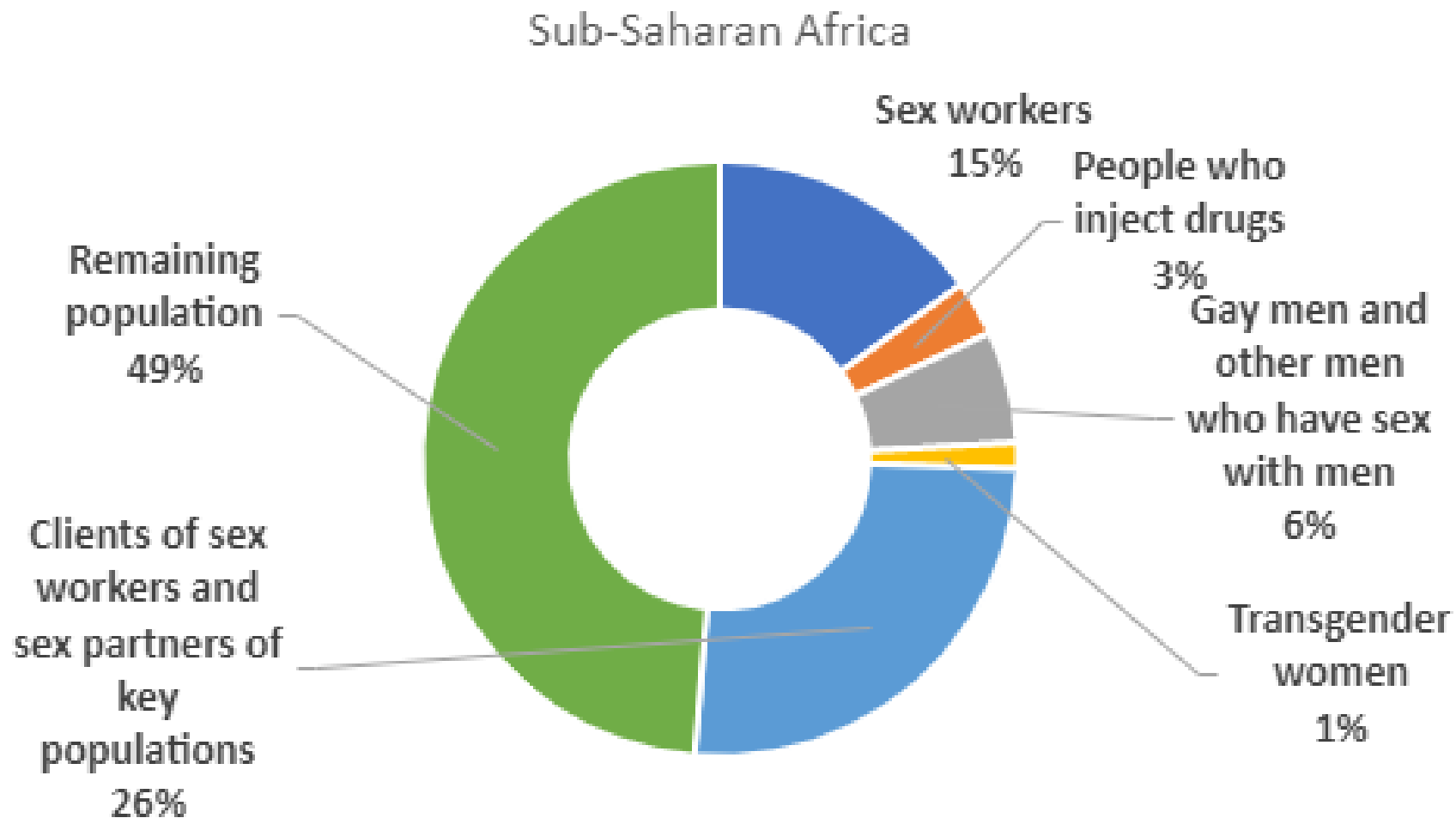
Source: UNAIDS epidemiological estimates, 2022 (<https://aidsinfo.unaids.org/>).

Distribution of new HIV infections by population group, global | 2021



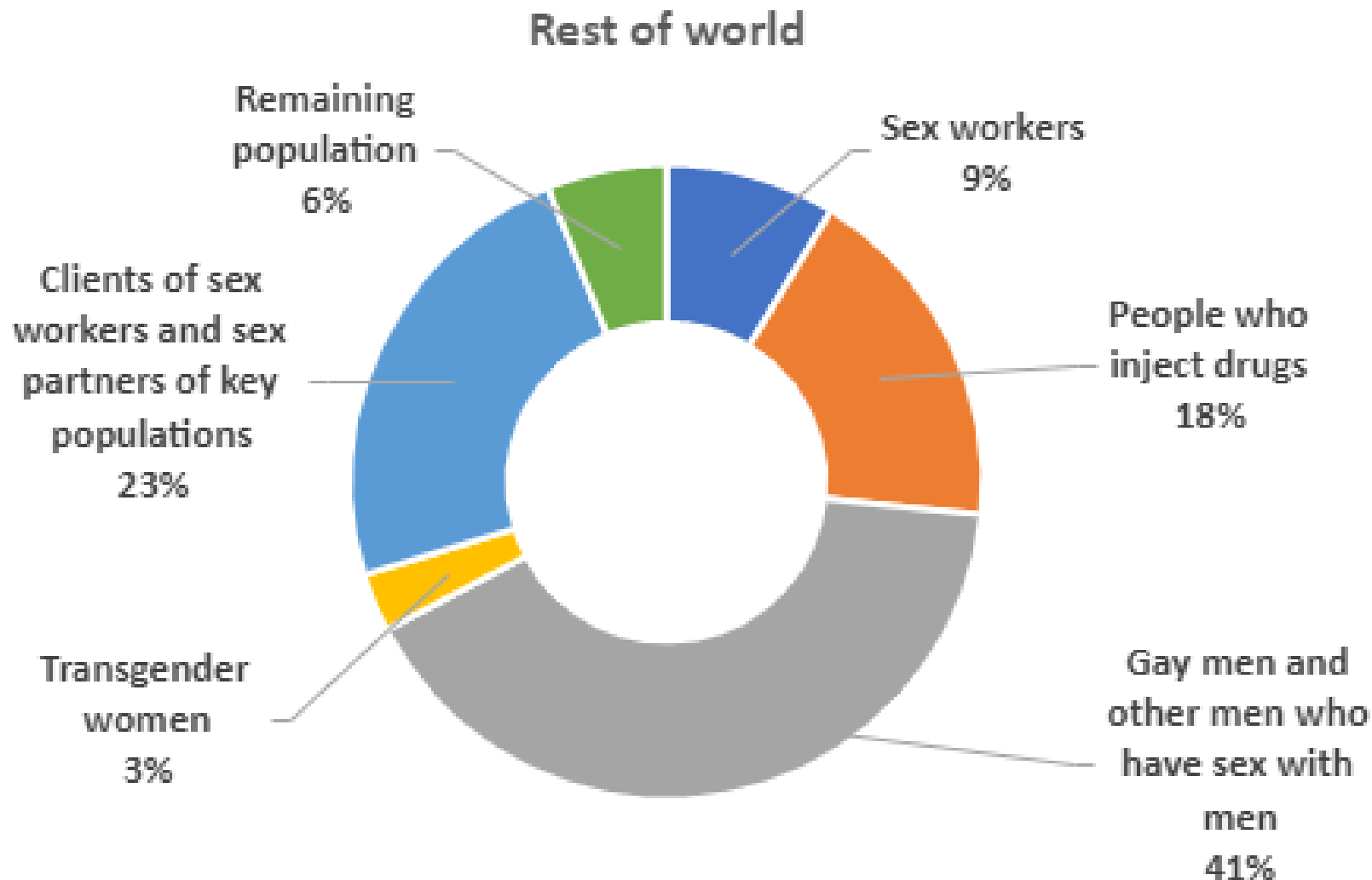
Source: UNAIDS special analysis, 2022 (see Annex on Methods).

Distribution of new HIV infections by population group, Sub-Saharan Africa | 2021



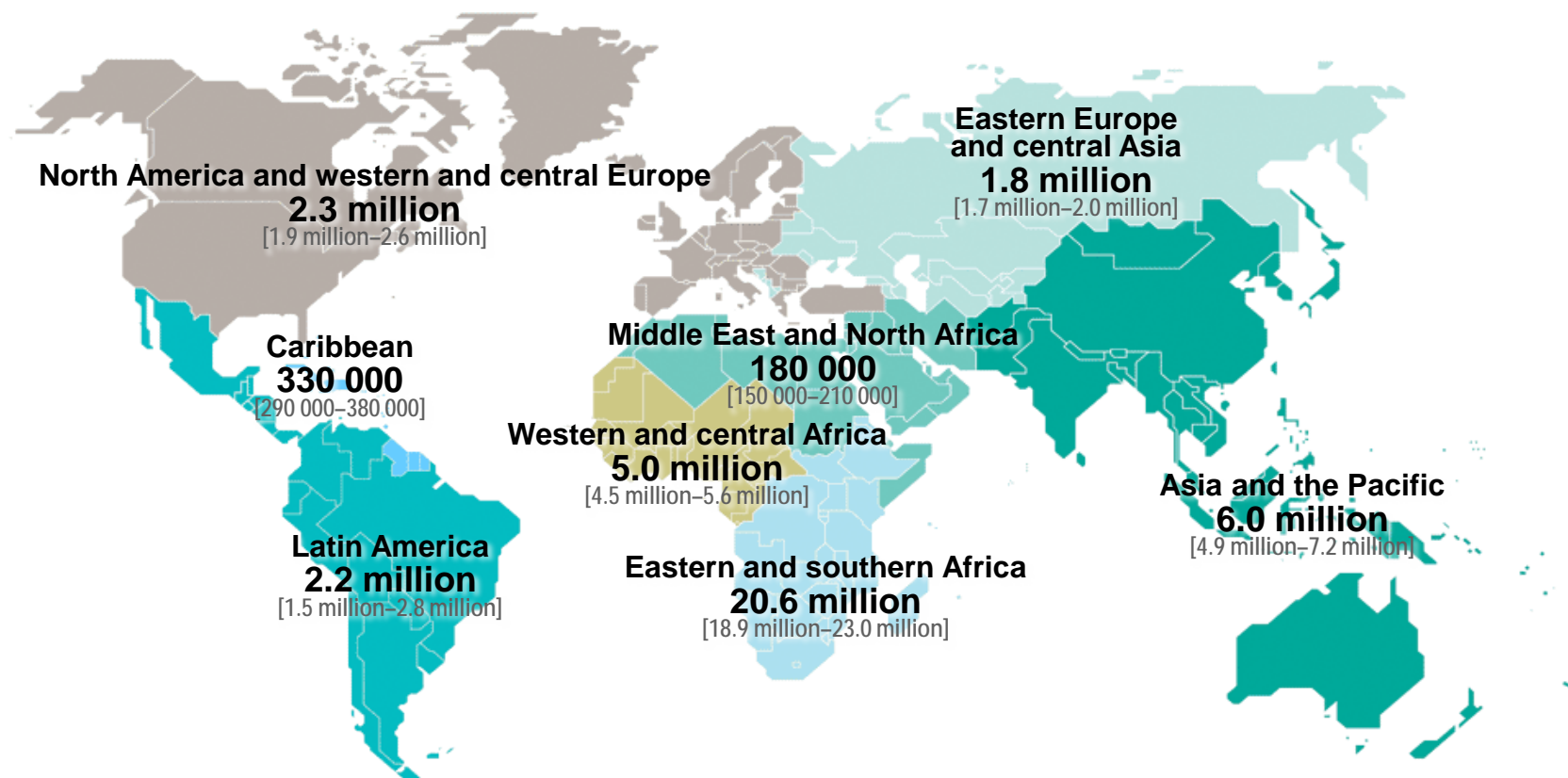
Source: UNAIDS special analysis, 2022 (see Annex on Methods).

Distribution of new HIV infections by population group, global | 2021



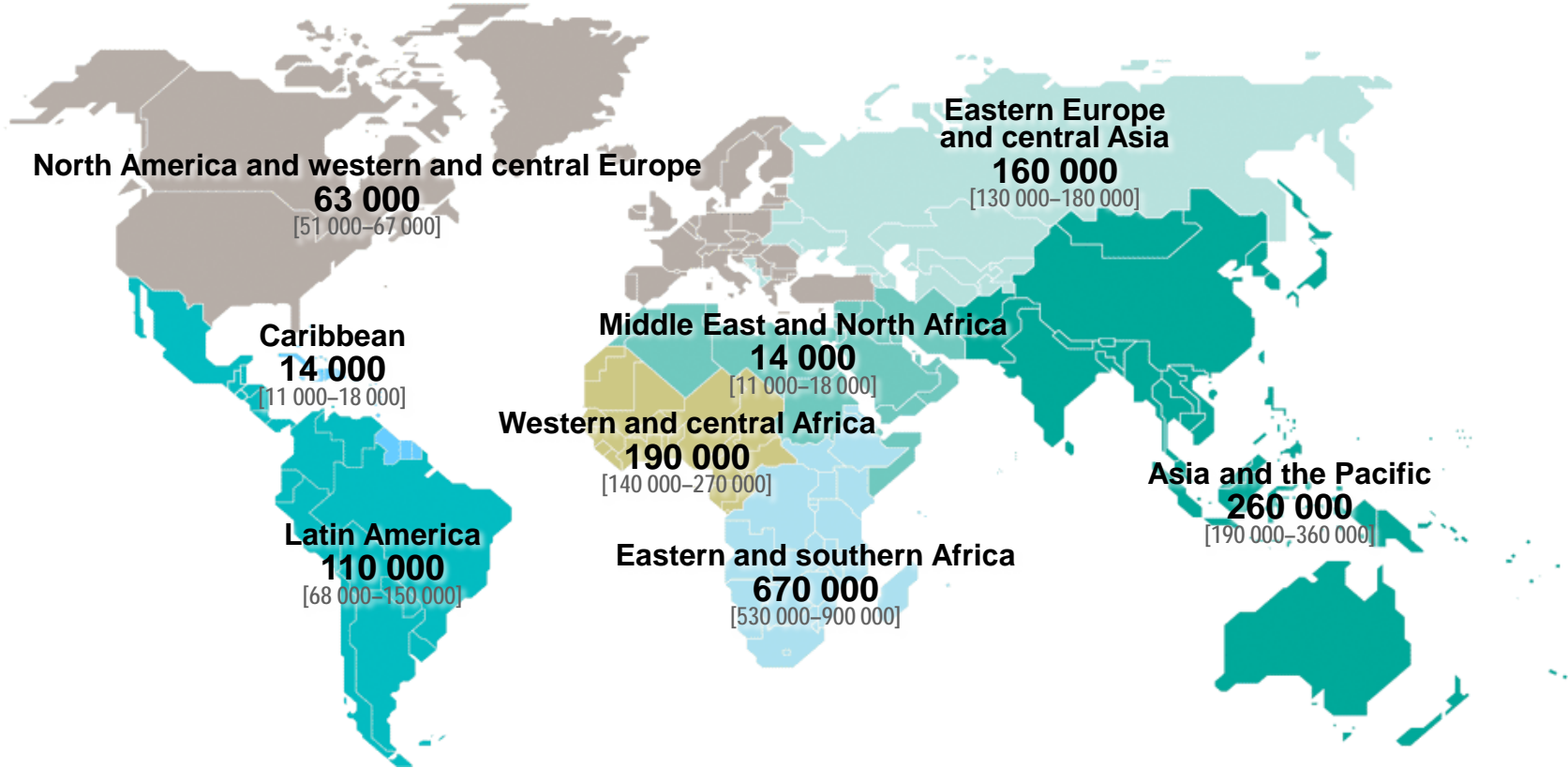
Annex on Methods).

Adults and children estimated to be living with HIV | 2021



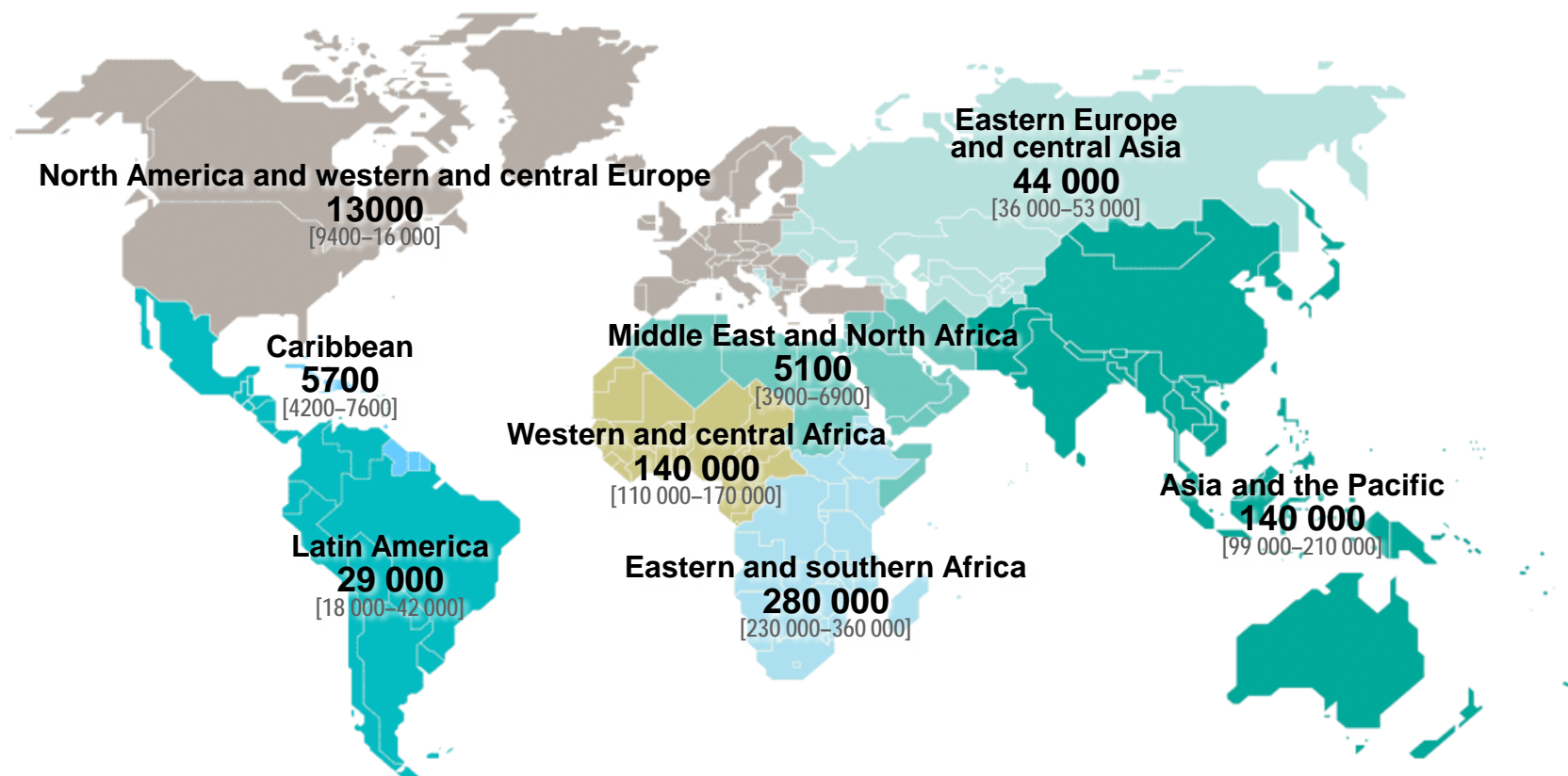
Total: 38.4 million [33.9 million–43.8 million]

Estimated number of adults and children newly infected with HIV | 2021



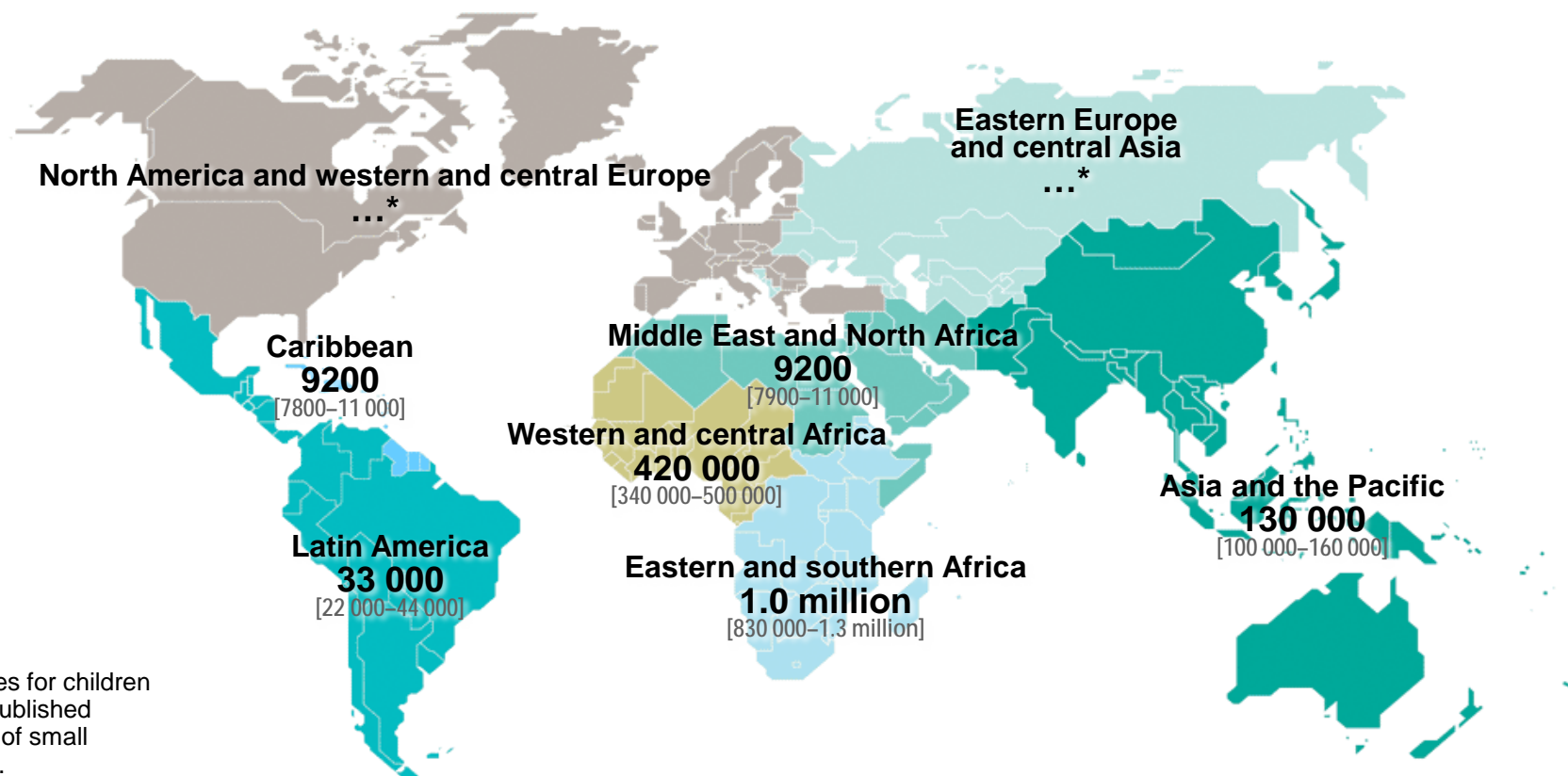
Total: 1.5 million [1.1 million–2.0 million]

Estimated adult and child deaths from AIDS | 2021



Total: 690 000 [500 000–970 000]

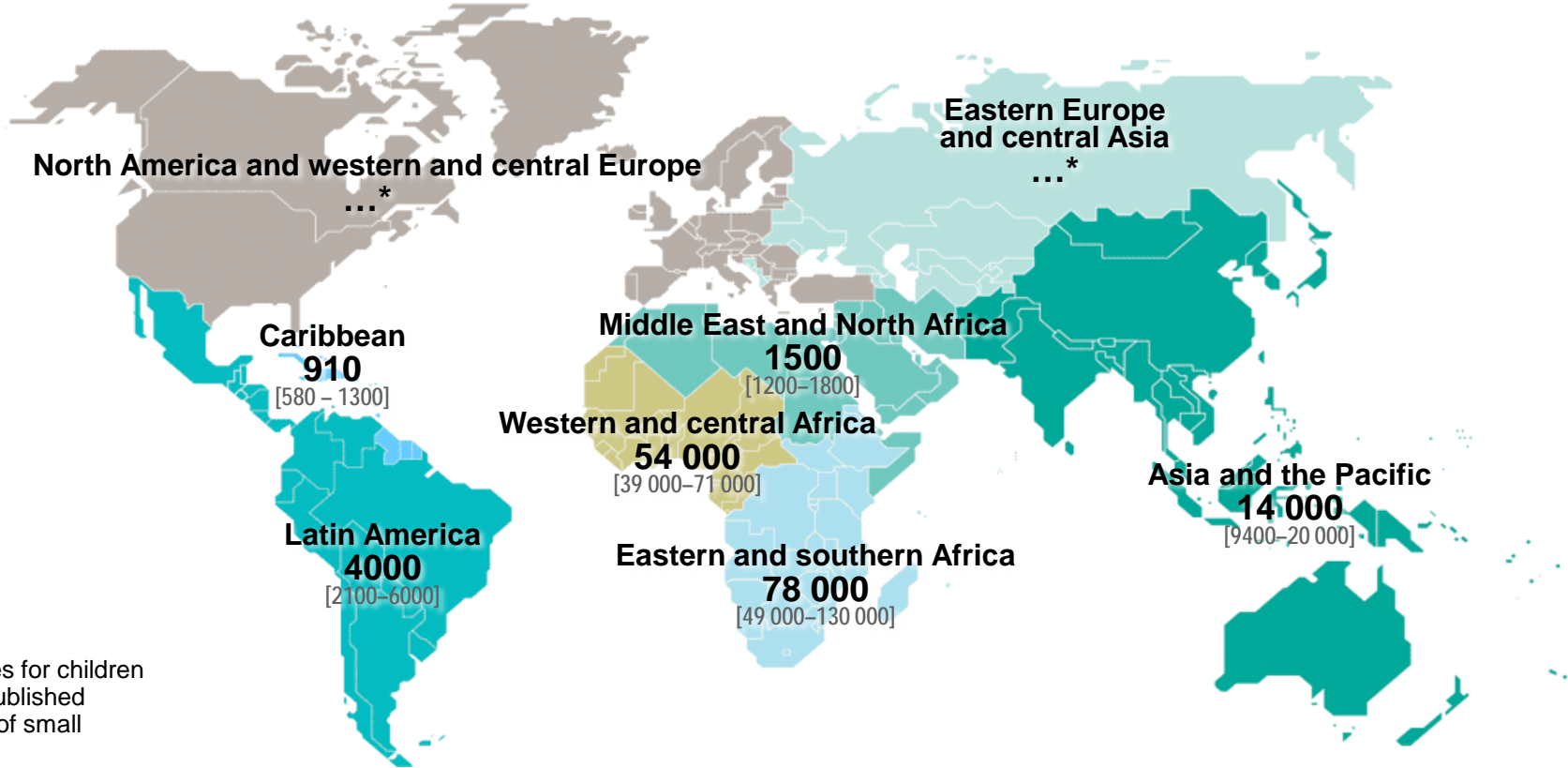
Children (<15 years) estimated to be living with HIV | 2021



*Estimates for children are not published because of small numbers.

Total: 1.7 million [1.3 million–2.1 million]

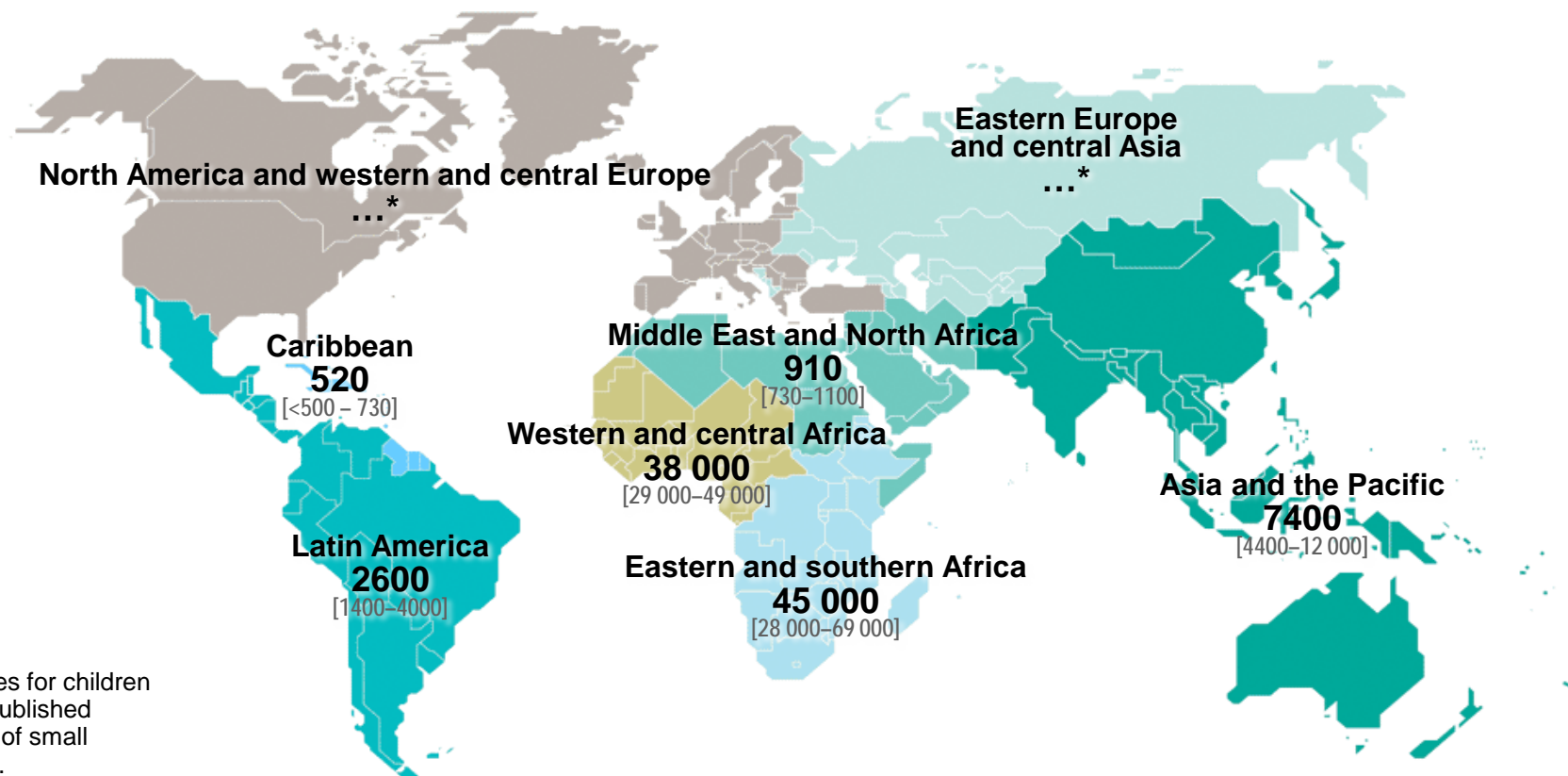
Estimated number of children (<15 years) newly infected with HIV | 2021



*Estimates for children are not published because of small numbers.

Total: 160 000 [110 000-230 000]

Estimated deaths in children (<15 years) from AIDS | 2021



*Estimates for children are not published because of small numbers.

Total: 98 000 [67 000-140 000]