



COVID-19 Simulation Exercises Packages

Section navigation

To support countries' preparedness effort on the COVID-19 outbreak, the Department of Health Security Preparedness at the WHO headquarters has developed various COVID-19 tabletop exercise (TTX) and Drills (DR) packages .

If you need technical support to implement any of the exercises listed on this page, please contact your WHO country office or regional office focal point.

DRILLS (DR)



This COVID-19 **vaccine drill** package sets out four common exercise drills that can be used in conjunction with your country COVID-19 vaccination programme. It consists of four elements which are placed sequentially and can be used either as stand-alone drills or as part of a system of testing the entire setup and delivery procedure. The drills programme consists of the following:

1. Select a site for the vaccination session
2. Setup the vaccination clinic/site
3. Operate the vaccination clinic/site and manage vaccine recipients
4. Close the vaccination clinic/site for the day

If you have used this package, please let us know at cer@who.int. We are keen to receive your feedback!

Arabic: ([Download](#))

Chinese: ([Download](#))

English: ([Download](#))

French: ([Download](#))

Russian: ([Download](#))

Spanish: ([Download](#))

Portuguese: ([Download](#))

TABLE-TOP EXERCISES (TTX)

The TTX packages consist of different elements including:

- **Power Point presentations to support the facilitation of the exercise and its subsequent debriefings.**
- **A Participants' Guide and a Facilitators' Guide to explain what is expected from the different people involved in the preparation and running of the exercise.**
- **A set of reference documents and technical guidance on COVID-19.**

The package highlights clearly where some minor adaptations are needed to make the simulation country-specific and more relevant to the participants.

Supply chain and communication strategies



A COVID-19 vaccine tabletop exercise that aims to assist countries to plan, develop and update their national deployment and vaccination plan (NDVP) for the equitable timely access to COVID-19 vaccines specifically addressing targeting **supply chain & communication strategies**.

If you have used this package, please let us know at cer@who.int. We are keen to receive your feedback!

Arabic: [Download](#)

Chinese: [Download](#)

English: [Download](#)

French: [Download](#)

Russian: [Download](#)

Spanish: [Download](#)

Portuguese: [Download](#)

Regulatory and safety issues

A COVID-19 vaccine tabletop exercise that aims to assist countries to plan, develop and update their national deployment and vaccination plan (NDVP) for the equitable timely access to COVID-19 vaccines specifically addressing **regulatory and safety issues**.

If you have used this package, please let us know at cer@who.int. We are keen to receive your feedback!

Arabic: [Download](#)

Chinese: [Download](#)

English: [Download](#)

French: [Download](#)

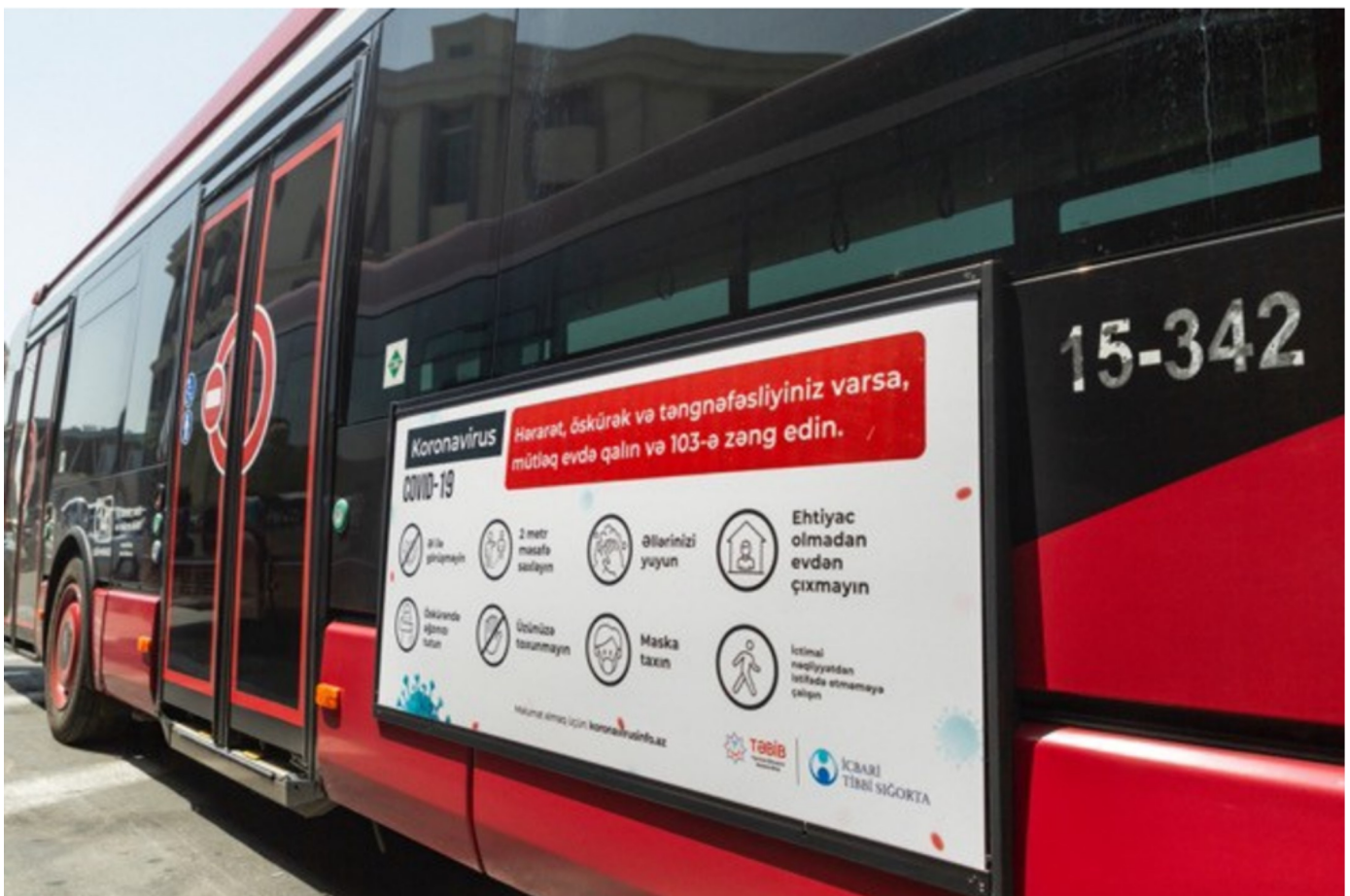
Russian: [Download](#)

Spanish: [Download](#)

Portuguese: [Download](#)



Public Health and Social Measures (PHSM)



A **Public Health and Social Measures (PHSM)** tabletop exercise to conceptualize and manage ongoing (local) COVID-19 outbreaks in the country, while minimizing social and economic disruption through effective public health and social measures.

If you have used this package, please let us know at cer@who.int. We are keen to receive your feedback!

Arabic: [Download](#)

Chinese: [Download](#)

English: [Download](#)

French: [Download](#)

Russian: [Download](#)

Spanish: [Download](#)

Portuguese: [Download](#)

Urban

An **Urban** COVID-19 tabletop exercise to discuss critical issues in urban environments as the pandemic develops into an established infectious disease that may have periods of increased spread and number of persons affected.

If you have used this package, please let us know at cer@who.int. We are keen to receive your feedback!

Arabic: [Download](#)

Chinese: [Download](#)

English: [Download](#)

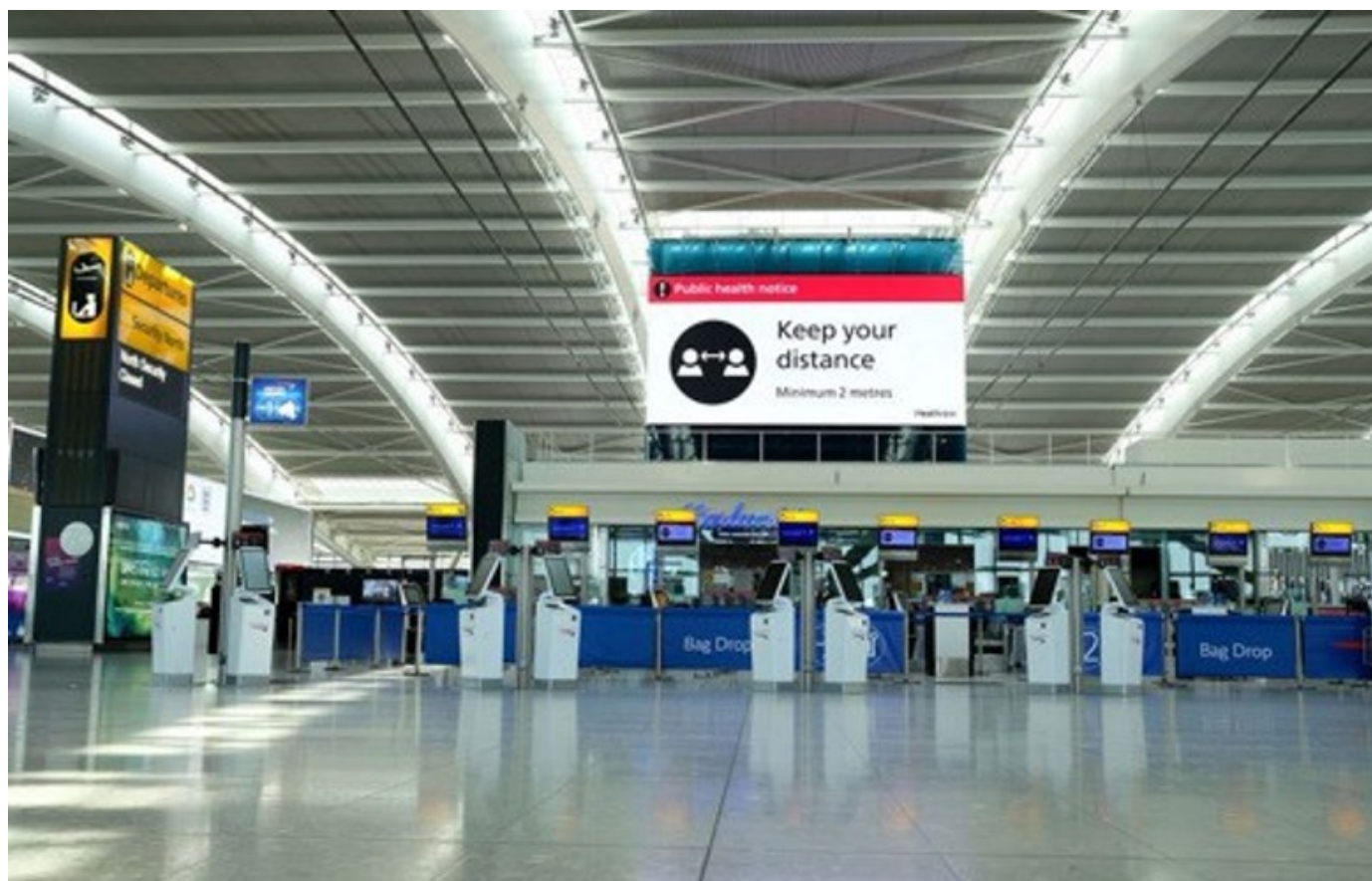
French: [Download](#)

Russian: [Download](#)

Spanish: [Download](#)



Point of Entry (PoE)



A **Point of Entry (POE)** tabletop exercise to examine and strengthen countries' existing plans, procedures and capabilities for managing COVID-19 cases in international travel including in aviation and ground crossings.

If you have used this package, please let us know at cer@who.int. We are keen to receive your feedback!

Arabic: [Download](#)

Chinese: [Download](#)

English: [Download](#)

French: [Download](#)

Russian: [Download](#)

Spanish: [Download](#)

Portuguese: [Download](#)

Health facility and Infection Prevention and Control

A **Health facility & IPC** tabletop exercise that aims to examine the implementation of IPC strategies required to prevent or limit transmission of COVID-19 in health care facilities.

If you have used this package, please let us know at cer@who.int. We are keen to receive your feedback!

Arabic: [Download](#)

Chinese: [Download](#)

English: [Download](#)

French: [Download](#)

Russian: [Download](#)

Spanish: [Download](#)

Portuguese: [Download](#)





Generic COVID-19 table top exercise


**NOVEL
CORONAVIRUS
(COVID-19)**

**HEALTH
EMERGENCY
PREPAREDNESS
SIMULATION EXERCISE**

COUNTRY NAME
Date and location

YOUR  HERE

 World Health Organization



Arabic: [Download](#)

Chinese: [Download](#)

English: [Download](#)

French: [Download](#)

Russian: [Download](#)

Spanish: [Download](#)

Portuguese: [Download](#)

A **Generic** COVID-19 table top exercise to examine and strengthen existing plans, procedures and capabilities to manage the ongoing and future COVID-19 outbreaks.

If you have used this package, please let us know at cer@who.int. We are keen to receive your feedback!