



Global Antimicrobial Resistance Surveillance System (GLASS)

**Guide to enrolment for antimicrobial
resistance national focal points**



**World Health
Organization**

© World Health Organization 2016

All rights reserved. Publications of the World Health Organization are available on [the WHO website \(http://www.who.int\)](http://www.who.int) or can be purchased from WHO Press, World Health Organization, 20 Avenue Appia, 1211 Geneva 27, Switzerland (tel.: +41 22 791 3264; fax: +41 22 791 4857; email: bookorders@who.int).

Requests for permission to reproduce or translate WHO publications – whether for sale or for non-commercial distribution – should be addressed to WHO Press through the WHO website (http://www.who.int/about/licensing/copyright_form/en/index.html).

The designations employed and the presentation of the material in this publication do not imply the expression of any opinion whatsoever on the part of the World Health Organization concerning the legal status of any country, territory, city or area or of its authorities, or concerning the delimitation of its frontiers or boundaries. Dotted and dashed lines on maps represent approximate border lines for which there may not yet be full agreement.

The mention of specific companies or of certain manufacturers' products does not imply that they are endorsed or recommended by the World Health Organization in preference to others of a similar nature that are not mentioned. Errors and omissions excepted, the names of proprietary products are distinguished by initial capital letters.

All reasonable precautions have been taken by the World Health Organization to verify the information contained in this publication. However, the published material is being distributed without warranty of any kind, either expressed or implied. The responsibility for the interpretation and use of the material lies with the reader. In no event shall the World Health Organization be liable for damages arising from its use.

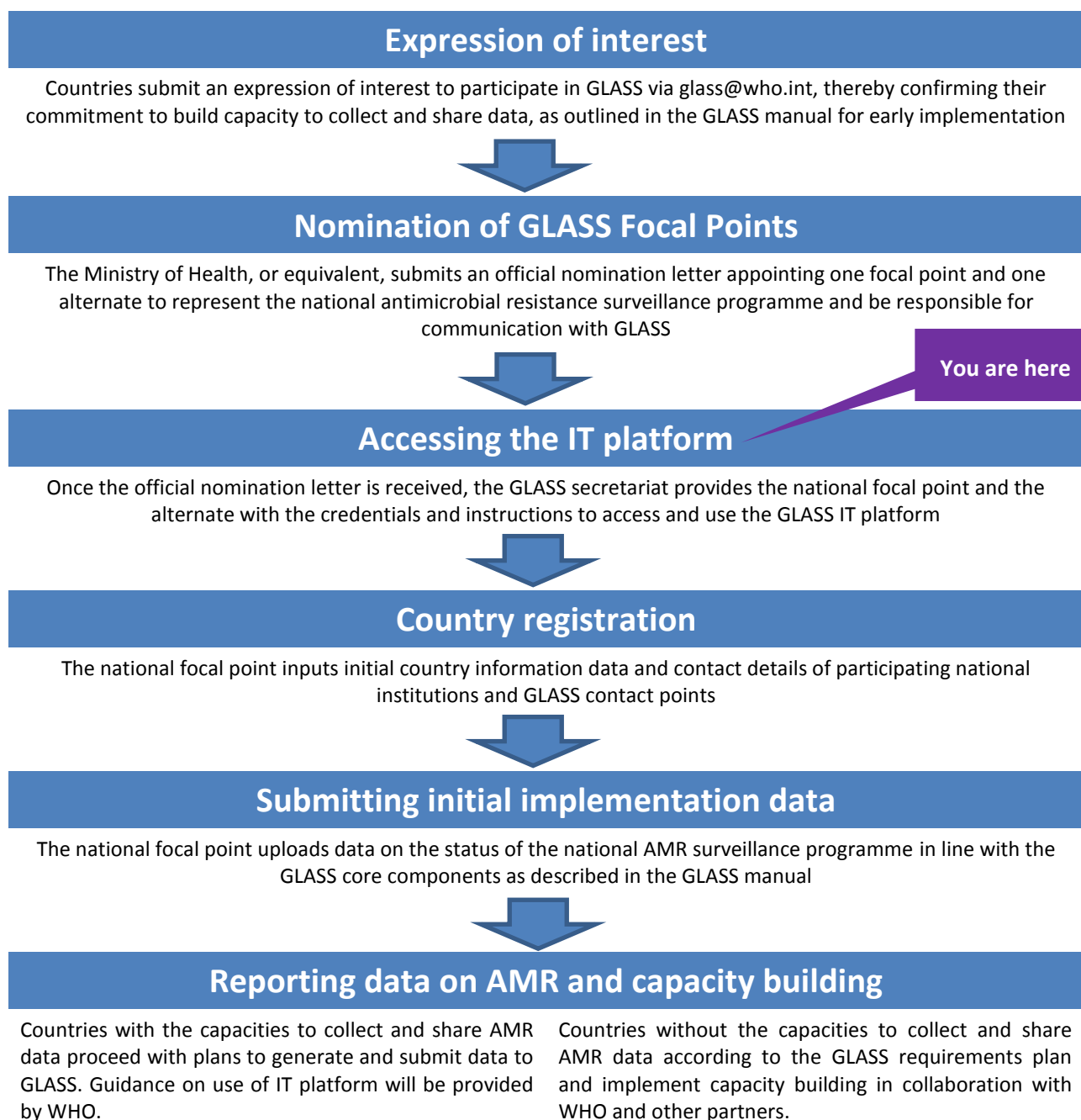
Financial Support

The Governments of Germany, Japan, the Netherlands, the Republic of Korea, Sweden, the United Kingdom and United States of America.

Introduction

This guide has been developed for national GLASS focal points who have been nominated by their ministry of health to represent the national antimicrobial resistance (AMR) surveillance programme. It outlines the GLASS enrolment process and provides instructions on the initial steps in using the GLASS IT platform. Detailed information on the GLASS methodology and implementation roadmap is available in the *GLASS Manual for early implementation* (1).

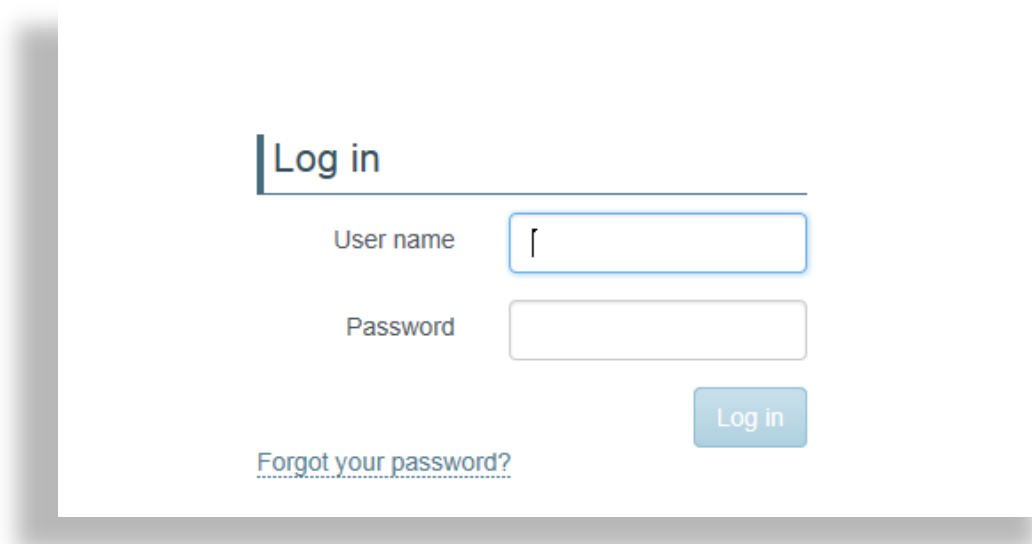
GLASS enrolment steps



Accessing the GLASS IT platform

The GLASS IT platform is a secure database with web-interface. The current version allows users to submit both national AMR surveillance programme implementation data and aggregated data on antibacterial resistance in humans. As the national focal point for GLASS, you will be able to upload, review and submit new data, view your upload history, access and download previously submitted data and download AMR data reports.

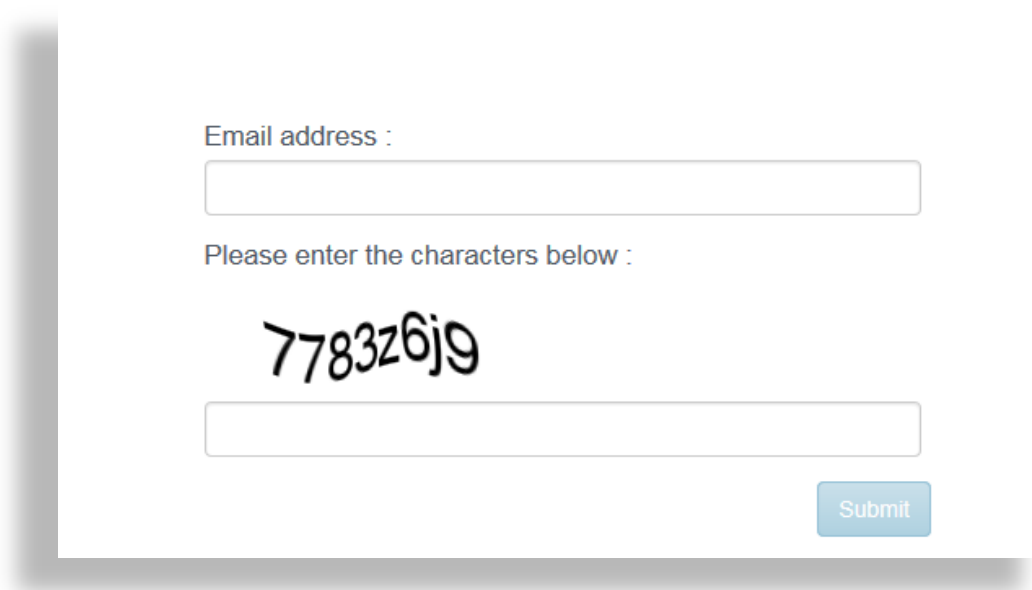
You will receive two separate emails providing your user name and password as well as the link to the GLASS IT platform. When you open the link in your browser, you will see the login page:



The screenshot shows a login form with the following elements:

- A header section titled "Log in" with a vertical bar to its left.
- A "User name" label followed by a text input field.
- A "Password" label followed by a text input field.
- A blue "Log in" button.
- A blue link labeled "Forgot your password?" below the password field.

Please note that you can retrieve your password by clicking on the "Forgot your password?" link. To recover your password, you will need to enter your email address and the CAPTCHA letters shown on your screen:



The screenshot shows a password recovery form with the following elements:

- An "Email address :" label followed by a text input field.
- A "Please enter the characters below :" label.
- A CAPTCHA image showing the characters "7783z6j9".
- A text input field for entering the CAPTCHA characters.
- A blue "Submit" button.

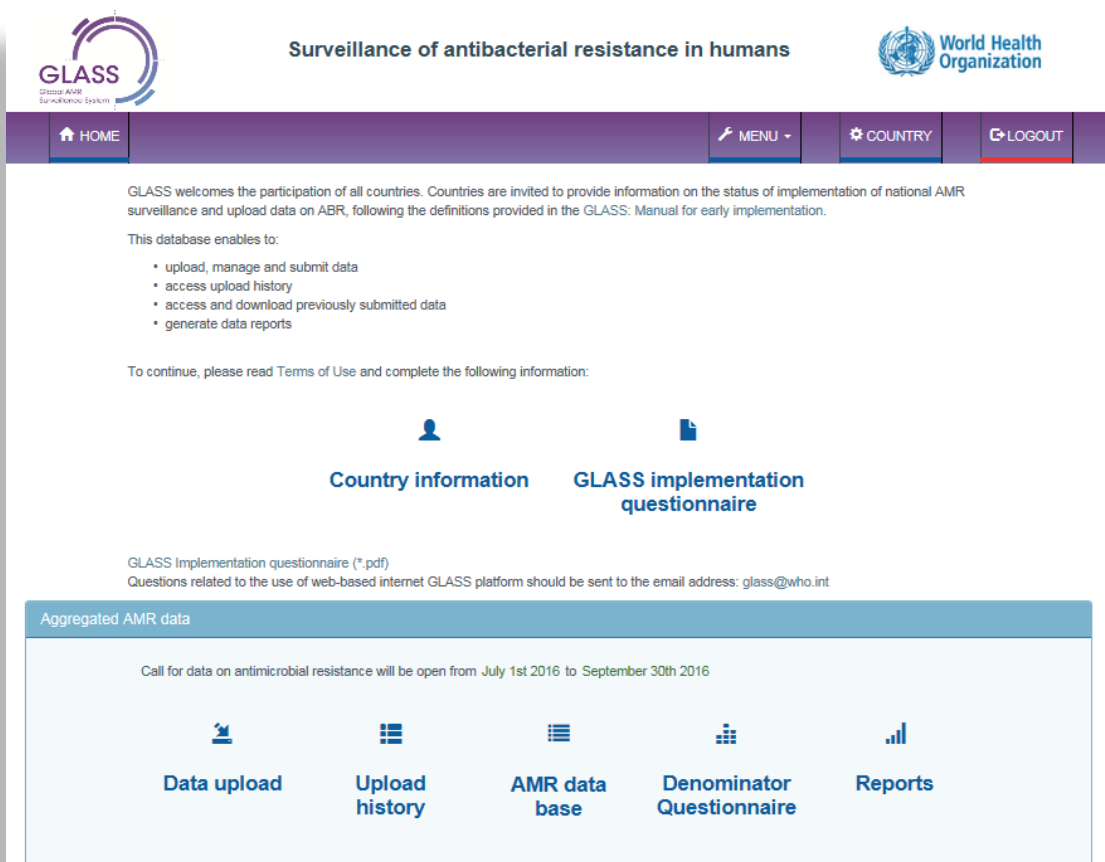
The WHO GLASS portal page

Once you have logged in, you will arrive at the WHO GLASS portal page:



GLASS currently focuses on bacterial pathogens in humans and will be progressively expanded to include other types of AMR-related surveillance, such as the food chain, the environment and antimicrobial use and will build links with other global surveillance systems. In the future GLASS portal will include the links to the additional types of surveillance.

Click on the "Antibacterial resistance in humans" button to access the home page "Surveillance of antibacterial resistance in humans".



Please begin by reading the GLASS IT platform *Terms of Use* via the link on the home page. Continuing to use the platform after reading the *Terms of Use* implies acceptance of the *Terms of Use*.

To continue, please read [Terms of Use](#) and complete the following information:

Please note that the link to the *GLASS Manual for early implementation (1)* is also available:

GLASS welcomes the participation of all countries. Countries are invited to provide information on the status of implementation of national AMR surveillance and upload data on ABR, following the definitions provided in the [GLASS: Manual for early implementation](#)

Country information

Please go to the *Country Information* page using the menu button on the home page and complete the web form:

GLASS
Global AMR
Surveillance System

Surveillance of antibacterial resistance in humans

World Health Organization

HOME MENU FRANCE LOGOUT

Country Information

Country Identification

WHO Region	WHO European Region
Country	France
Year	2016

Contact person

Family name *

First name *

Function *

Email address *

Telephone *

Institution *

Institution address *

City *

Zip code *

Do you have an alternate person? Yes No

Exit Save and Exit

Please note that all the fields are mandatory. You will receive an error message if any of the fields are left blank. Please use the green **“Save and exit”** button in the lower right corner when you have completed all the requested information.

If you need to correct the contact details or update your password, click on the menu button with your country name in the upper part of the home page (“COUNTRY” in the screenshot) and you will be redirected to MY ACCOUNT on the portal page:



By clicking on the **“Antibacterial resistance in humans”** you will access the home page “Surveillance of antibacterial resistance in humans” again.

GLASS implementation data

Please go to the *GLASS implementation data* page using the menu button on the home page and complete the web form. Please note that all the fields are mandatory. You will receive an error message if any of the fields are left blank. Please use the green **“Save and exit”** button in the lower right corner when you have completed all the requested information.

A detailed description of this step is available in a separate document (2).

Glass implementation

Country identification

WHO Region	WHO African Region
Country	Uganda
Year	2016

GLASS questionnaire

1. Has the National Coordination Centre (NCC) been established with mandate and terms of reference according to GLASS manual ? *
 - Yes
 - In progress
 - No
2. Has a Focal Point (the responsible person for GLASS/communication with WHO) been assigned? *
 - Yes
 - In progress
 - No
3. Have plans been agreed to implement and strengthen antimicrobial resistance (AMR) surveillance, including participation in GLASS? *
 - Yes, with budget
 - Yes, but No budget
 - No
 - Unknown
4. Has a National Reference Laboratory(s) (NRL) been designated to support national AMR surveillance? *
 - Yes
 - No
 - Unknown

This is the final step in the enrolment process. Procedures for submission of AMR data, analysis and reporting are not covered in this document.

Please contact the GLASS secretariat via glass@who.int if you have any questions or suggestions.

References:

1. Global Antimicrobial Resistance Surveillance System: Manual for Early Implementation. Available at http://apps.who.int/iris/bitstream/10665/188783/1/9789241549400_eng.pdf?ua=1
2. Global Antimicrobial Resistance Surveillance System (GLASS): A guide for the GLASS implementation questionnaire. Available from the GLASS Secretariat.