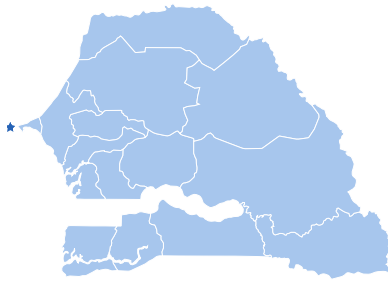




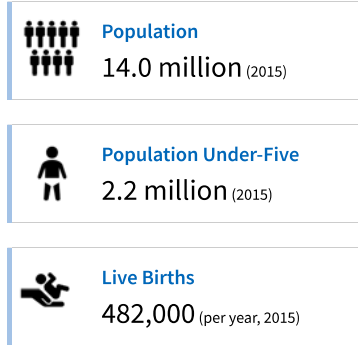
beta

Launch Tools | PRINT

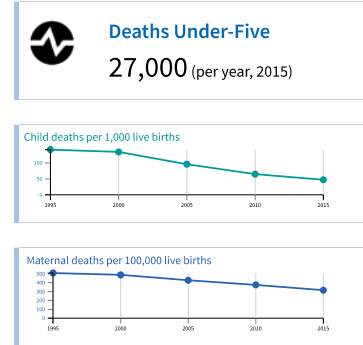
COUNTRY DATA: SENEGAL



Demographic Overview



Child and Maternal Health Overview



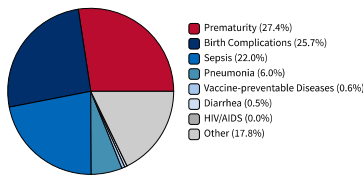
Sources: US Census Bureau; UN Inter-agency Group for Child Mortality Estimation; WHO Trends in Maternal Mortality 2015

Causes of Child and Maternal Mortality in Senegal

Hover over each cause of mortality below to see how select health behaviors contribute to mortality reduction globally, listed in alphabetical order. Note that the behaviors are not linked to mortality at the country level.

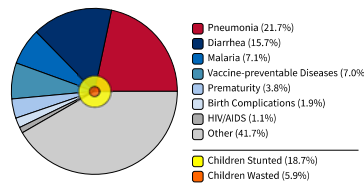
NEONATAL CAUSES

Age 0 to 30 days

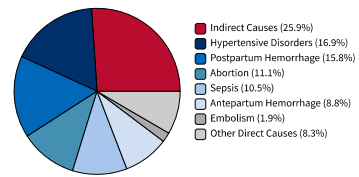


CHILD CAUSES

Age 1 month to 5 years



MATERNAL CAUSES

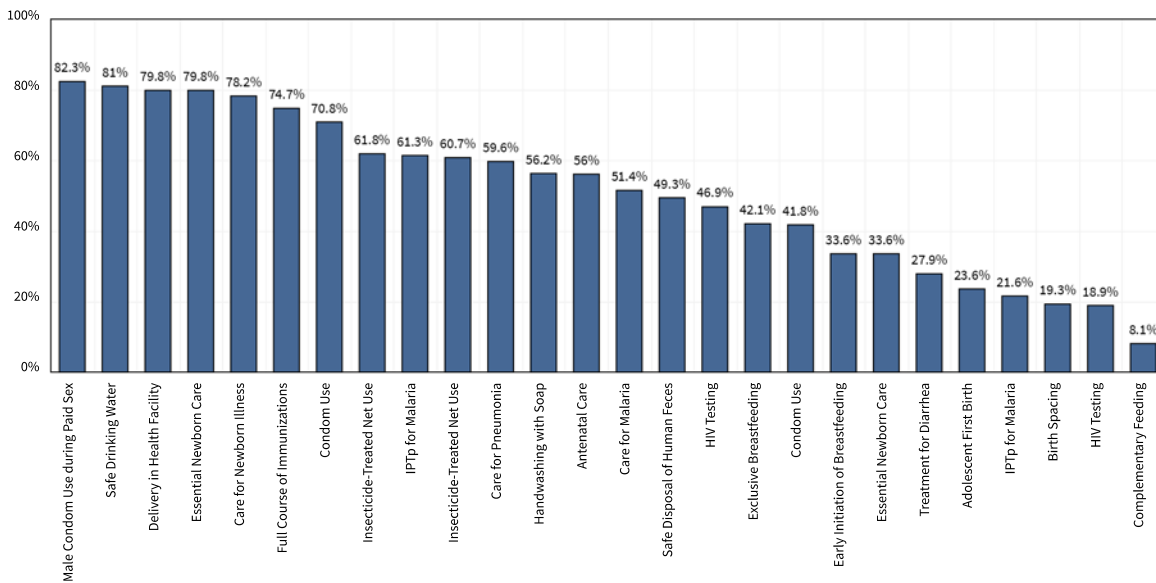


Source: WHO-MCEE Estimates for Child Causes of Death, 2015

Sources: WHO-MCEE Estimates for Child Causes of Death, 2015, Demographic and Health Survey

Source: Global Causes of Maternal Death: A WHO Systematic Analysis, 2014

Status of Select Health Behaviors in Senegal - National



Please provide feedback on this page.



beta

HOME

COUNTRY DATA

BEHAVIOR PROFILES

BIG | TOOLS

IDEAS LIBRARY

RESOURCES

LOG IN

Care for Pneumonia

Caregivers appropriately manage care for signs and symptoms of ARI in children

Percentage of children born in the five years preceding the survey with acute respiratory infection taken to a health facility

DOWNLOAD PIRS

See Subnational & Trend data



Management of Diarrhea

Caregivers appropriately manage diarrhea in children

Percentage of children born in the five years preceding the survey with diarrhea in the two weeks preceding the survey who received oral rehydration solution (ORS), that is either fluid from an ORS packet or a pre-packaged ORS fluid

DOWNLOAD PIRS

See Subnational & Trend data



Immunization

Full Course of Immunizations

Caregivers complete a full course of timely vaccinations for infants and children under 2 years

Percentage of children 12-23 months who had received all 8 basic vaccinations

DOWNLOAD PIRS

See Subnational & Trend data



Malaria

Insecticide-Treated Net Use

Pregnant women and children sleep under an insecticide-treated net (ITN)

Percentage of pregnant women who slept under an insecticide-treated net (ITN) the night before the survey

DOWNLOAD PIRS

See Subnational & Trend data



Percentage of children under age five who slept under an insecticide-treated net (ITN) the night before the survey

DOWNLOAD PIRS

See Subnational & Trend data



Intermittent Preventive Treatment of Malaria in Pregnancy

Pregnant women take intermittent preventive treatment of malaria (IPTp) during antenatal care (ANC) visits

Percentage of women age 15-49 with a live birth in the two years preceding the survey who during the pregnancy took 3 or more doses of SP/Fansidar, with at least one dose during an antenatal care visit

DOWNLOAD PIRS

See Subnational & Trend data



Percentage of women age 15-49 with a live birth in the two years preceding the survey who during the pregnancy took 2 or more doses of SP/Fansidar, with at least one dose during an antenatal care visit

DOWNLOAD PIRS

See Subnational & Trend data



Care for Malaria

Caregivers appropriately manage care for signs and symptoms of malaria for children

Among children under age five with fever in the two weeks preceding the survey, percentage for whom advice or treatment was sought from a health facility or provider

DOWNLOAD PIRS

See Subnational & Trend data



Maternal Health

Antenatal Care

Pregnant women complete a full course of quality antenatal care (ANC)

Percentage of women who had a live birth in the three years preceding the survey who had 4+ antenatal care visits

DOWNLOAD PIRS

See Subnational & Trend data



Please provide feedback on this page.



beta

Percentage of live births in the three years preceding the survey delivered at a health facility

DOWNLOAD PIRS

See Subnational & Trend data

Newborn Health

Essential Newborn Care

Caregivers provide essential newborn care immediately after birth

Among last-born children born in the 2 years preceding the survey, percentage who started breastfeeding within 1 hour of delivery

DOWNLOAD PIRS

See Subnational & Trend data



Percentage of live births in the three years preceding the survey delivered at a health facility. The proxy indicator is based on the assumption that newborns are more likely to receive the elements of essential newborn care if they are born in a health facility.

DOWNLOAD PIRS

See Subnational & Trend data



Care for Newborn Illness

Caregivers seek prompt and appropriate care for signs and symptoms of newborn illness

Percentage of last births in the two years preceding the survey who had their first postnatal checkup in the first two days after birth. The proxy indicator is based on the assumption that caregivers who attend a postnatal checkup within the first two days are more likely to know the danger signs of newborn illness and take action, and are also accessing care during a child's most vulnerable days.

DOWNLOAD PIRS

See Subnational & Trend data



Nutrition

Early Initiation of Breastfeeding

Mothers initiate breastfeeding within one hour after delivery

Among last-born children born in the two years preceding the survey the percentage who started breastfeeding within 1 hour of birth

DOWNLOAD PIRS

See Subnational & Trend data



Exclusive Breastfeeding

Mothers breastfeed exclusively for six months after birth

Percentage of youngest children under two years of age living with the mother who are exclusively breastfed from age 0-5 months

DOWNLOAD PIRS

See Subnational & Trend data



Complementary Feeding

Caregivers feed adequate amounts of diverse, nutritious, age appropriate foods to children from 6 to 23 months (inclusive), while continuing to breastfeed

Percentage of breastfed children age 6-23 months fed four or more food groups and the minimum meal frequency

DOWNLOAD PIRS

See Subnational & Trend data



Reproductive Health

Adolescent First Birth

Sexually active adolescents use a modern contraceptive method to delay first birth until after age 18

Percentage of sexually active unmarried women age 15-19 currently using any modern method of contraception

DOWNLOAD PIRS

See Subnational & Trend data



Birth Spacing

After a live birth, women or their partners use a modern contraceptive method to avoid pregnancy for at least 24 months

Percentage of currently married or in union women using family planning for spacing

DOWNLOAD PIRS

See Subnational & Trend data



Please provide feedback on this page.



beta

Handwashing with Soap

Family members wash hands with soap under running water at 4 critical times [after defecation, after changing diapers, before food preparation and before eating]

📈 Among households where place for handwashing was observed, percentage of households with soap and water. Soap includes soap or detergent in bar, liquid, powder or paste form.

📄 DOWNLOAD PIRS

📄 See Subnational & Trend data



Safe Disposal of Human Feces

Family members safely dispose of human feces

📈 Percentage of households with improved and non-shared toilet facilities

📄 DOWNLOAD PIRS

📄 See Subnational & Trend data



Safe Drinking Water

Family members drink safe water

📈 Percentage of households whose main source of drinking water is an improved source

📄 DOWNLOAD PIRS

📄 See Subnational & Trend data



HIV

Condom Use

Women and men use a condom during high risk sex

📈 Percentage of women who say they used a condom the last time they had sex with a non-marital, non-cohabiting partner, of those who have had sex with such a partner in the last 12 months.

📄 DOWNLOAD PIRS

📄 See Subnational & Trend data



📈 Percentage of men who say they used a condom the last time they had sex with a non-marital, non-cohabiting partner, of those who have had sex with such a partner in the last 12 months.

📄 DOWNLOAD PIRS

📄 See Subnational & Trend data



Male Condom Use during Paid Sex

Men use a condom during paid sexual intercourse

📈 Percentage of men reporting condom use the last time they had paid sex, of those who report having had paid for sex in the 12 months preceding the survey.

📄 DOWNLOAD PIRS

📄 See Subnational & Trend data



HIV Testing

Women and men test for HIV and obtain test results

📈 Percentage of women who have ever had an HIV test and received their results

📄 DOWNLOAD PIRS

📄 See Subnational & Trend data



📈 Percentage of men who have ever had an HIV test and received their results

📄 DOWNLOAD PIRS

📄 See Subnational & Trend data



ACCELERATE is made possible by the generous support of the American people through the United States Agency for International Development (USAID) and is implemented under Task Order No. AID-OAA-TO-15-00052 by The Manoff Group, Inc. in association with Howard Delafield International, OneWorld UK, Social Impact, Inc., and Sonjara, Inc. ACCELERATE is issued through the Transform IDIQ (Contract No. AID-OAA-I-14-00002). The information on this website does not necessarily represent the views of USAID or the United States Government.

✉ [Contact us with questions or comments.](#)

[Privacy Policy](#) | [USAID.gov](#)

🗨 [Please provide feedback on this page.](#)