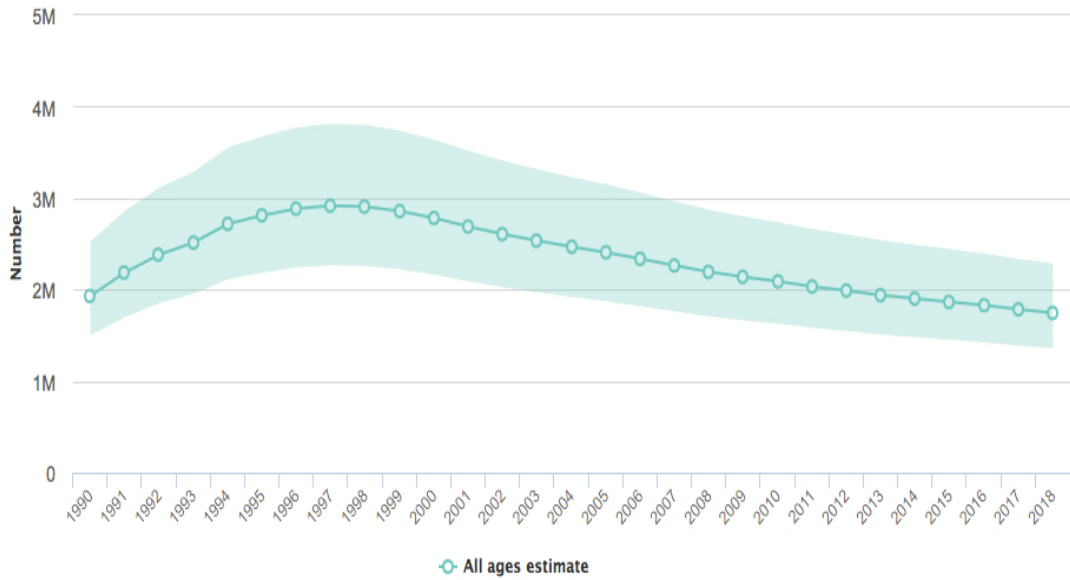
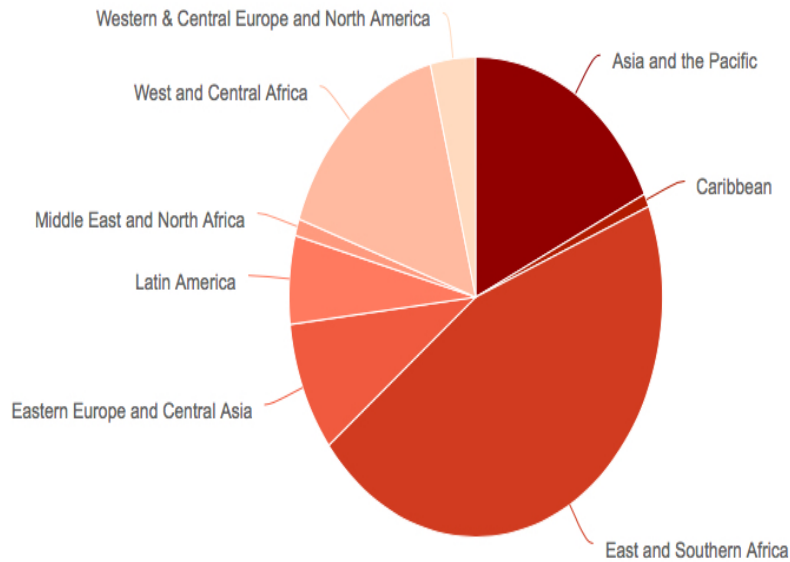


New HIV Infections

New HIV infections (all ages)

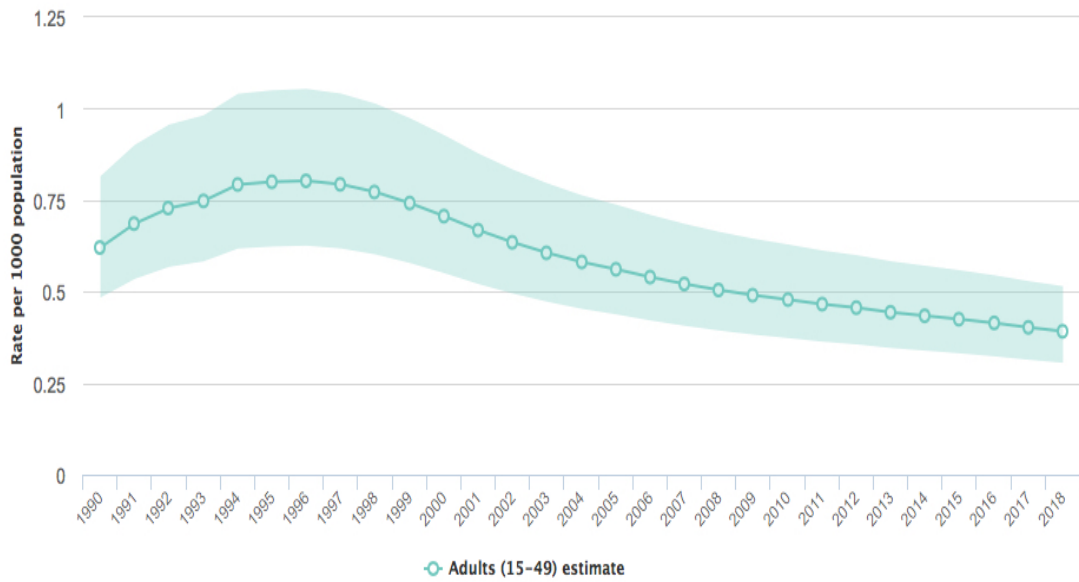


New HIV infections (all ages) - by region

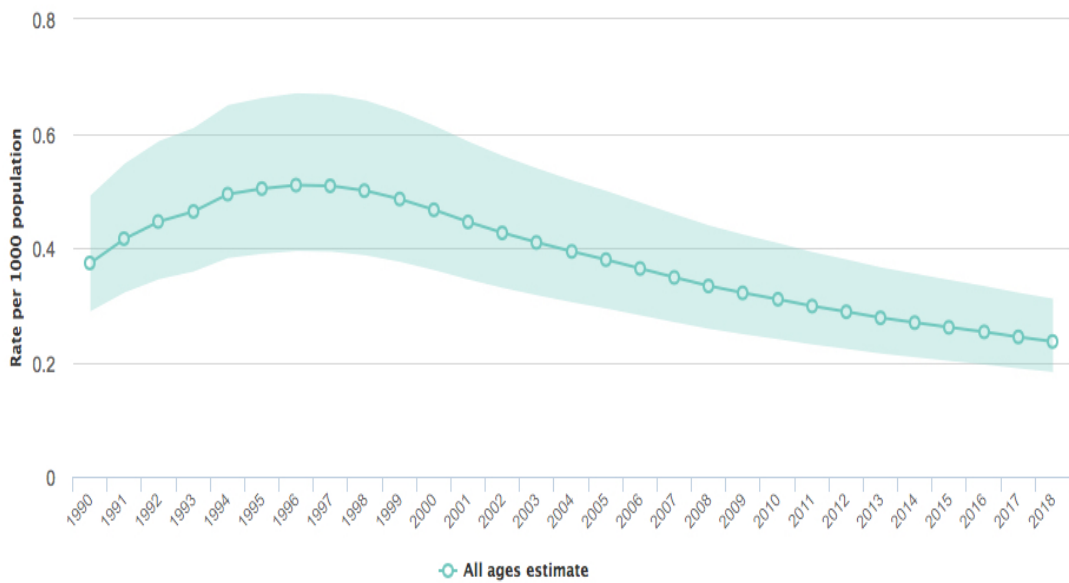


New HIV Infections

HIV incidence per 1000 population (15-49)

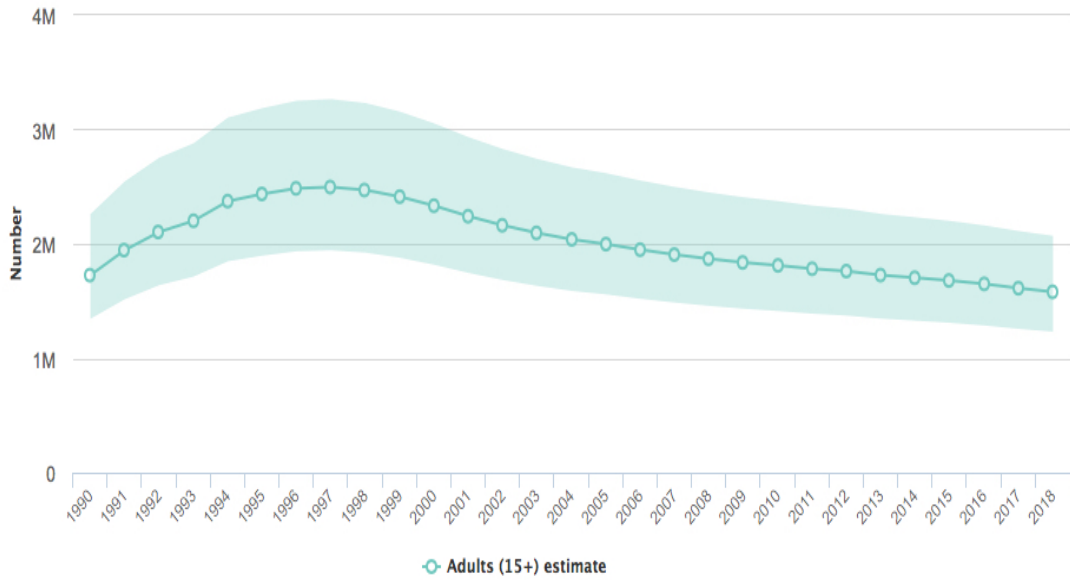


HIV incidence per 1000 population (all ages)

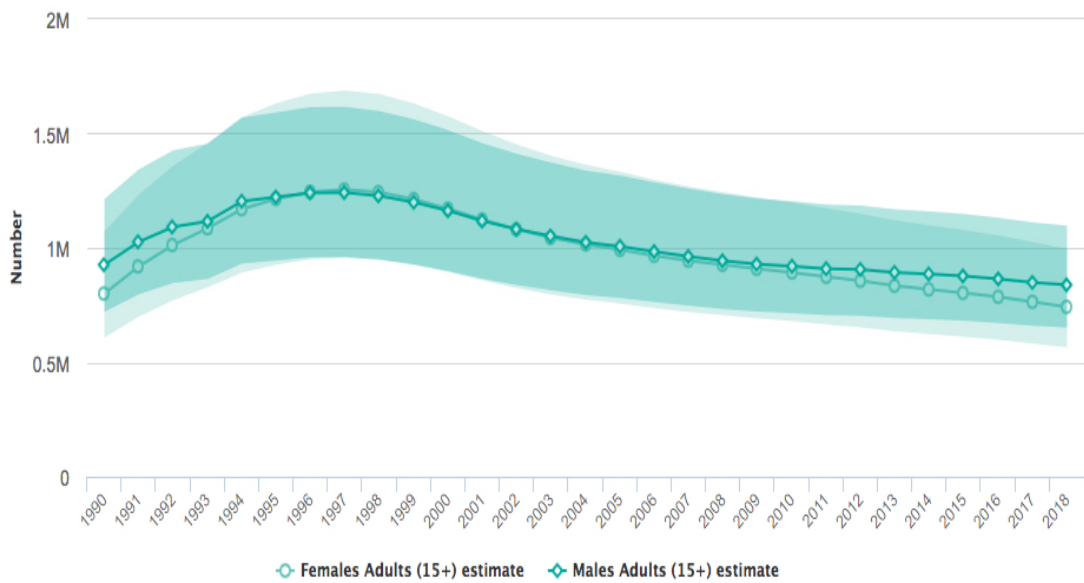


New HIV Infections

New HIV infections among adults (15+)

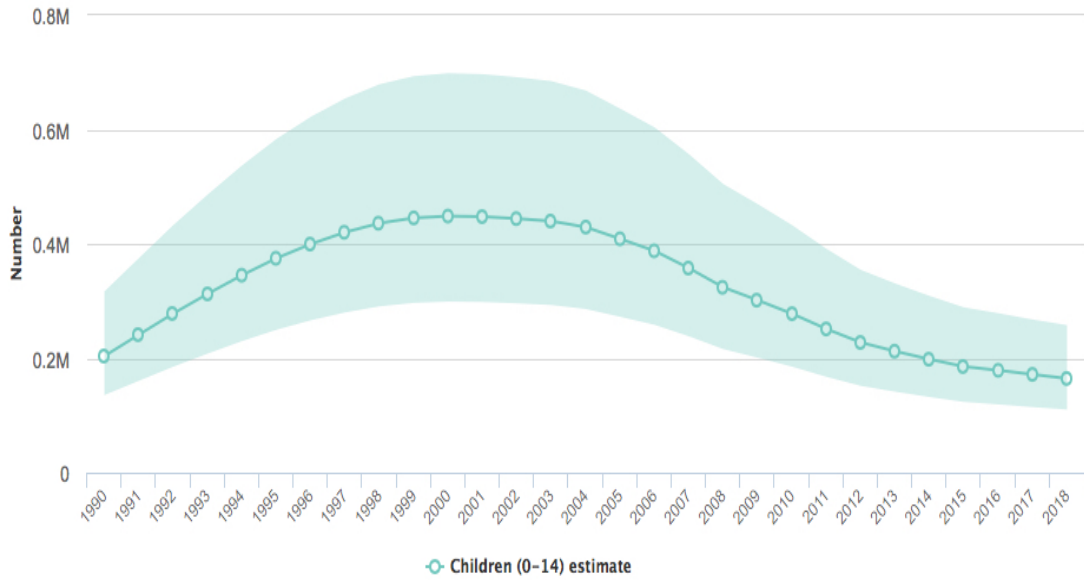


New HIV Infections among adults (15+) - by sex

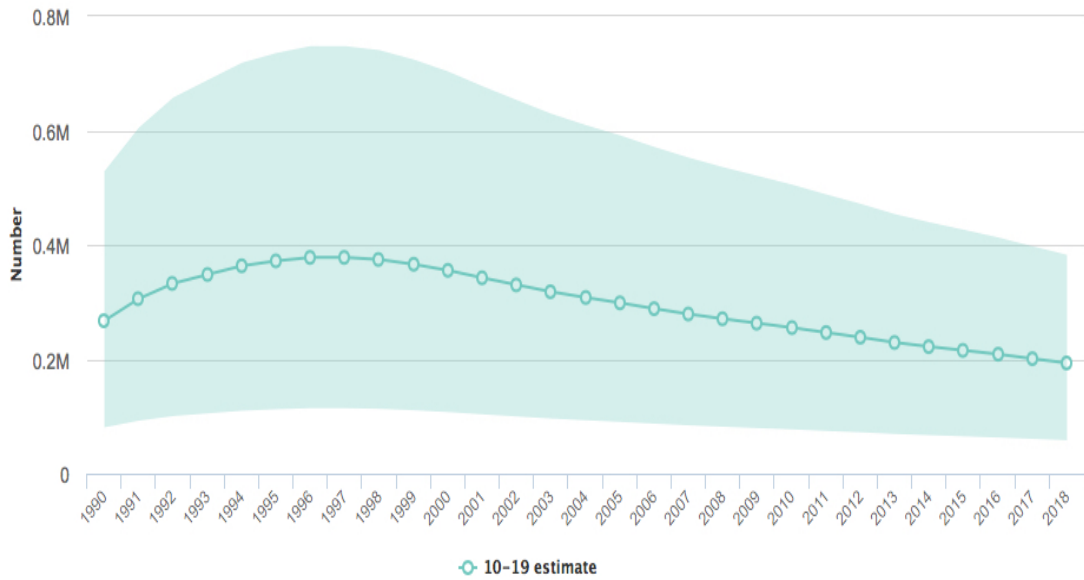


New HIV Infections

New HIV infection among children (0-14)

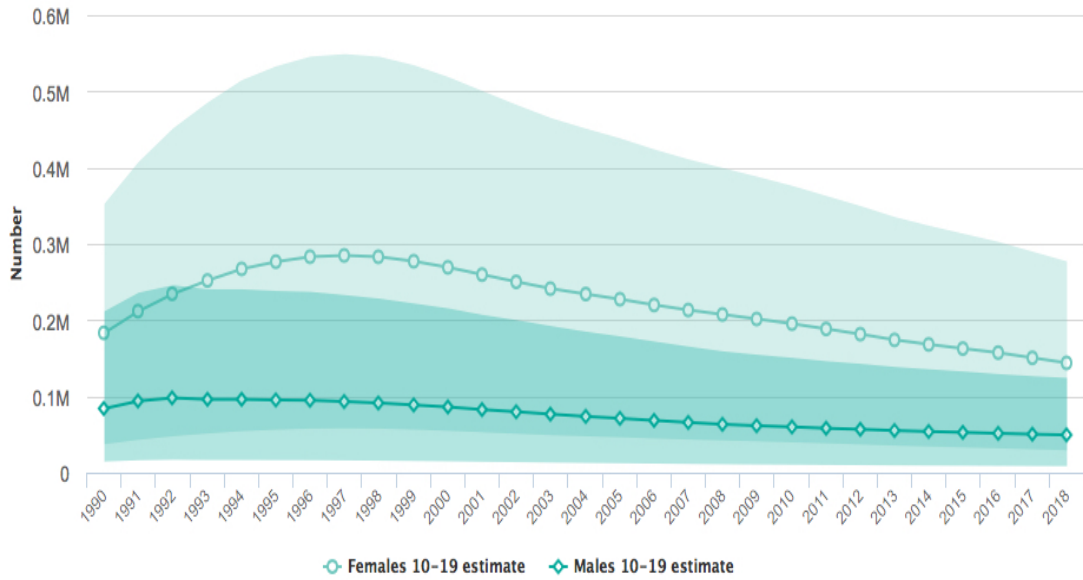


New HIV infections among adolescents (10-19)

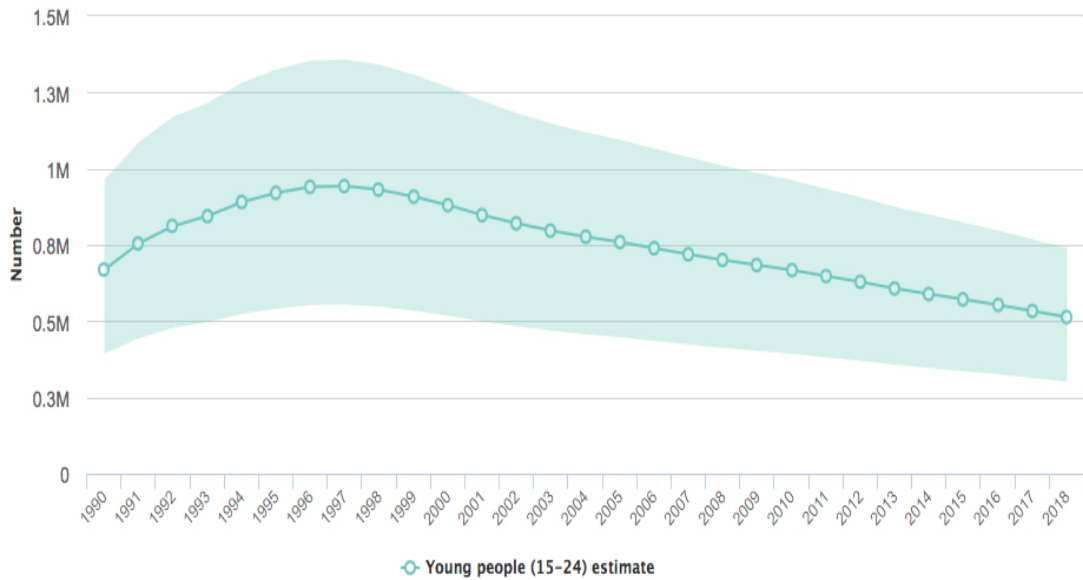


New HIV Infections

New HIV infections among adolescents (10-19) - by sex

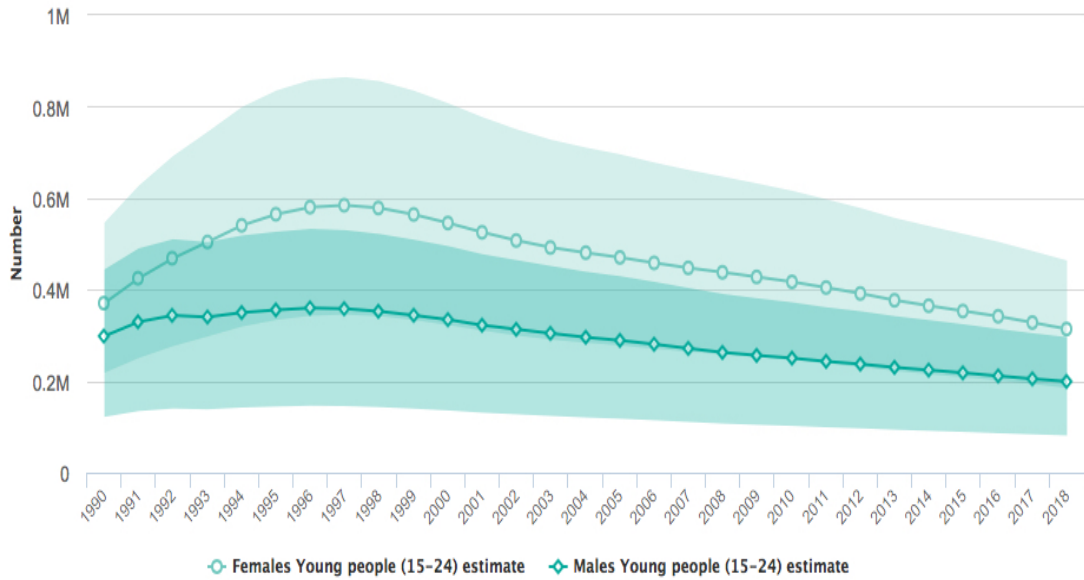


New HIV infections among young people (15-24)

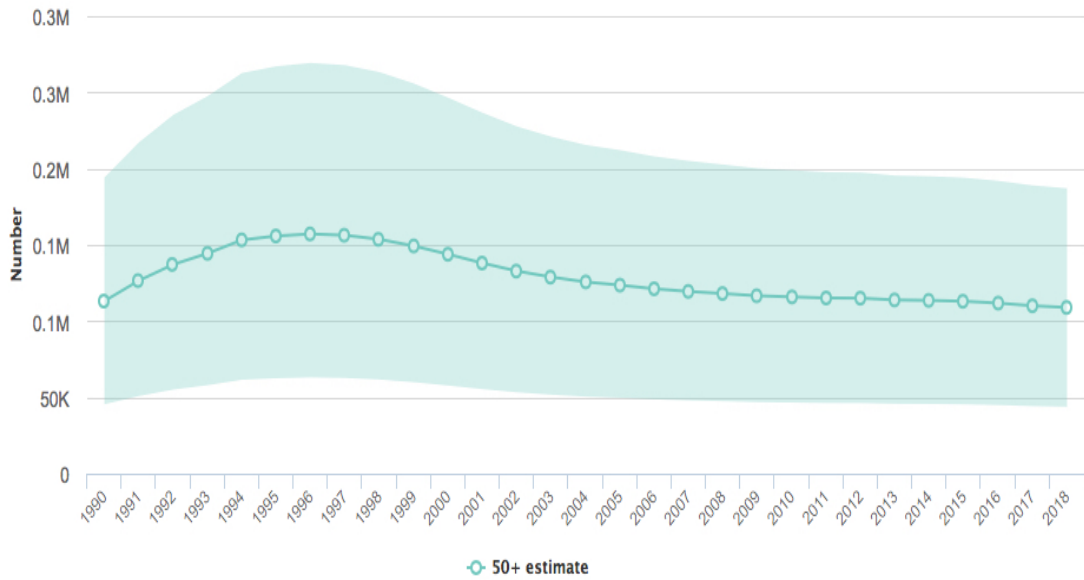


New HIV Infections

New HIV infections among young people (15-24) - by sex



New HIV infections among people aged 50+



New HIV Infections

New HIV infections among people aged 50+ - by sex

