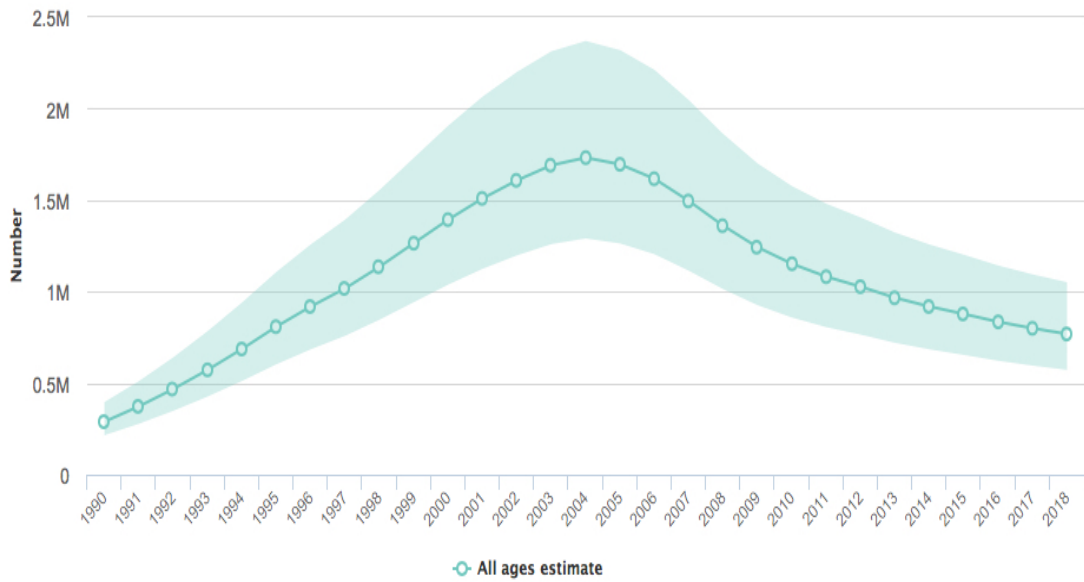
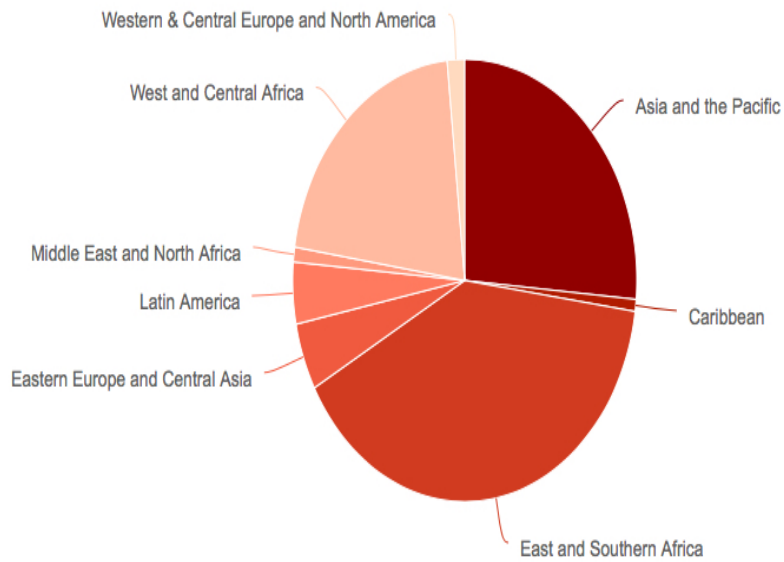


AIDS-related deaths

AIDS-related deaths (all ages)

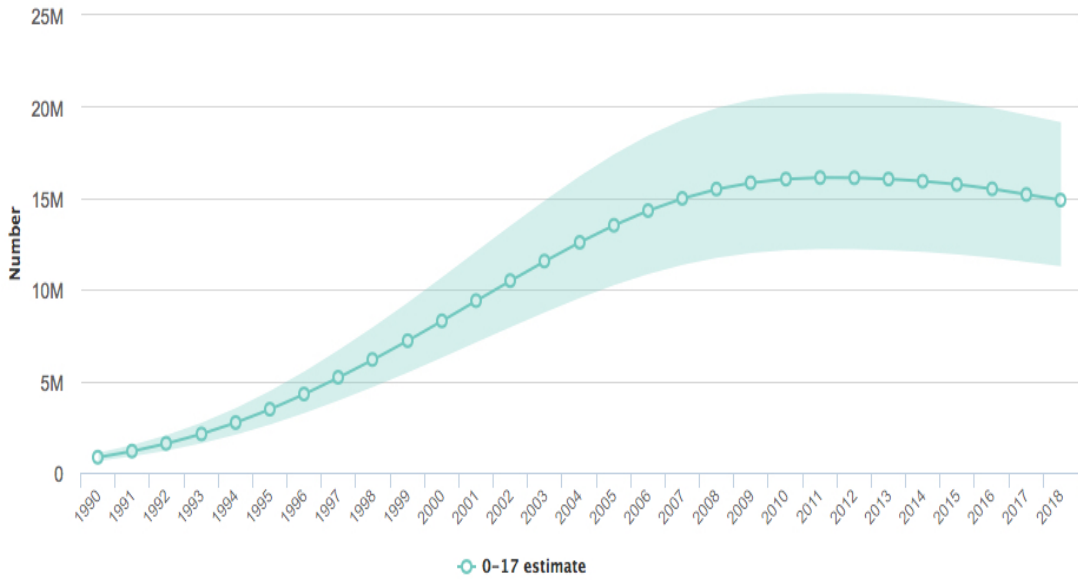


AIDS-related deaths (all ages) - by region

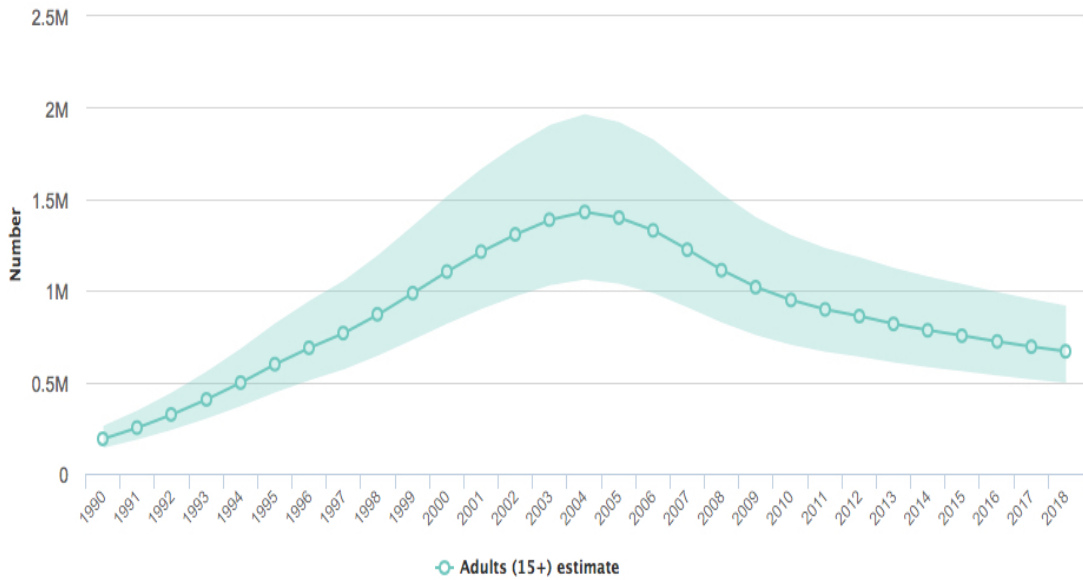


AIDS-related deaths

AIDS orphans (0-17)

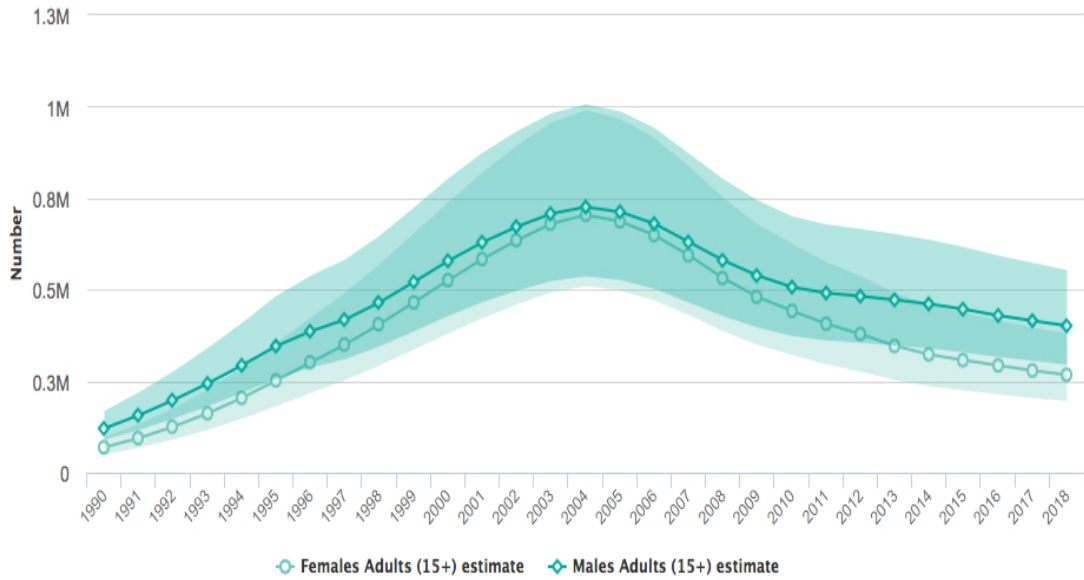


AIDS-related deaths among adults (15+)

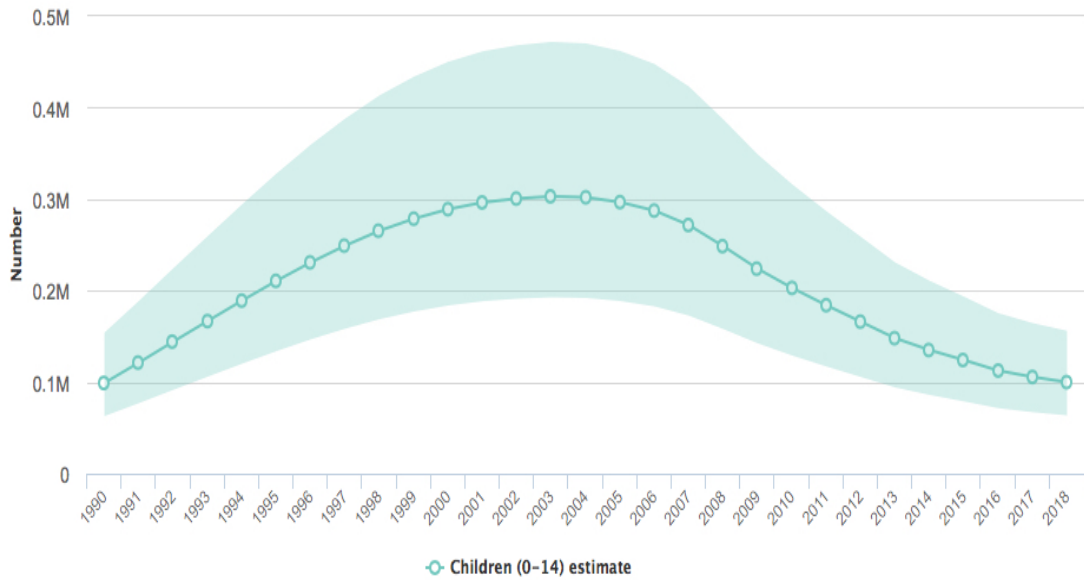


AIDS-related deaths

AIDS-related deaths among adults (15+) - by sex

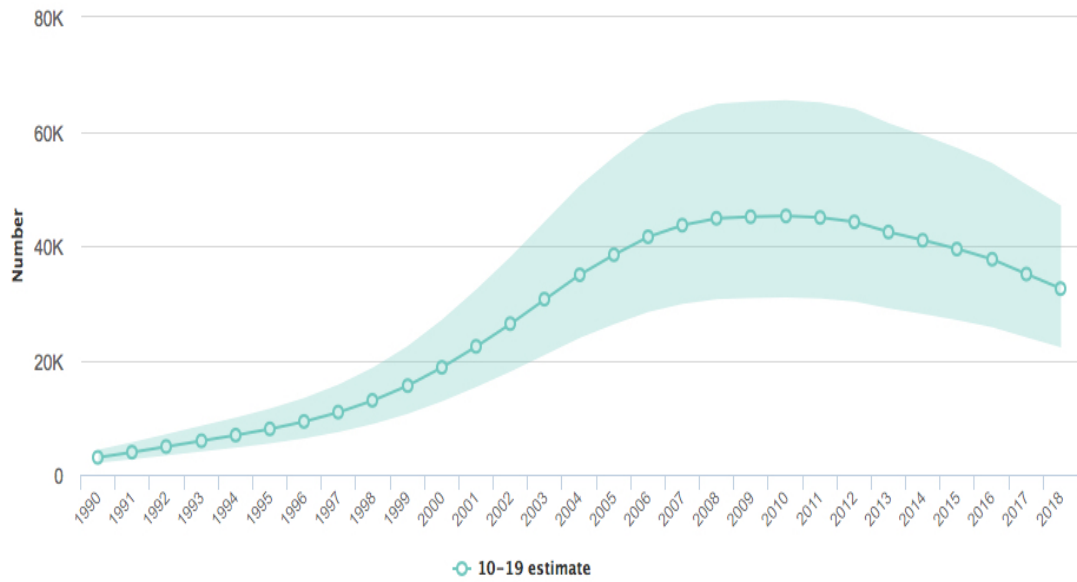


AIDS-related deaths among children (0-14)

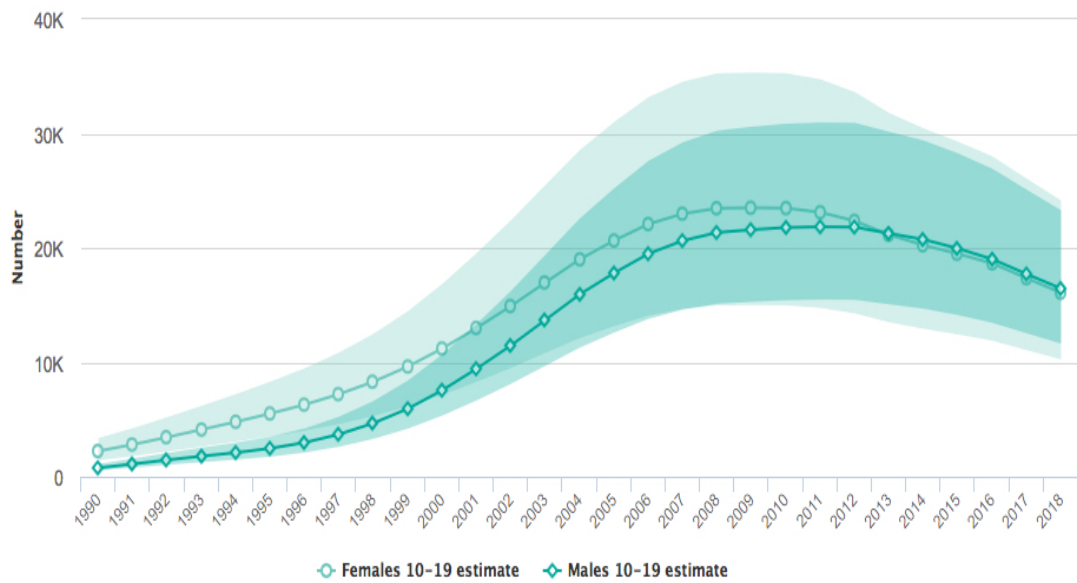


AIDS-related deaths

AIDS-related deaths among adolescents (10-19)

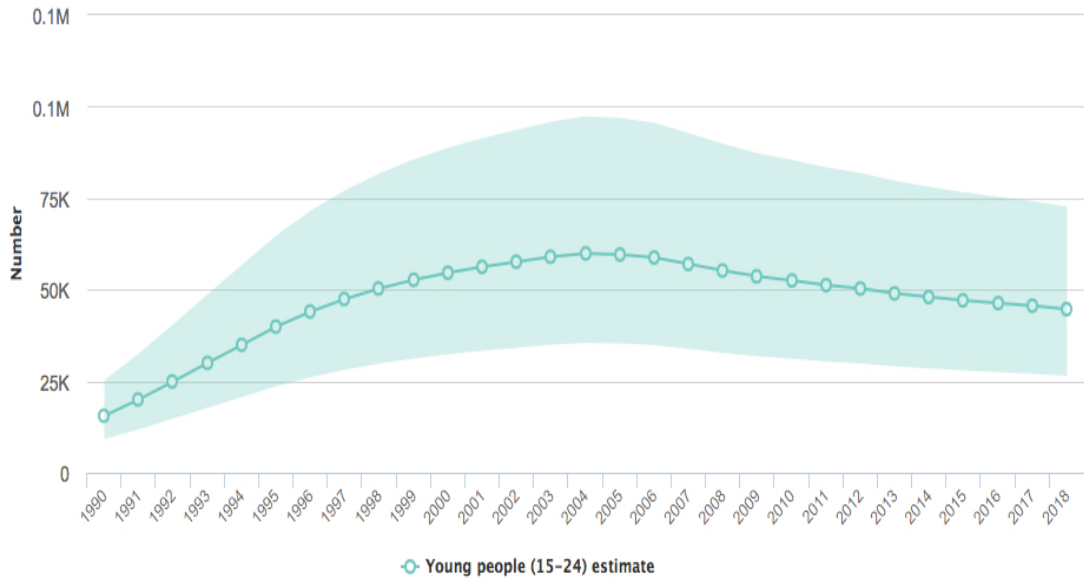


AIDS-related deaths among adolescents (10-19) - by sex

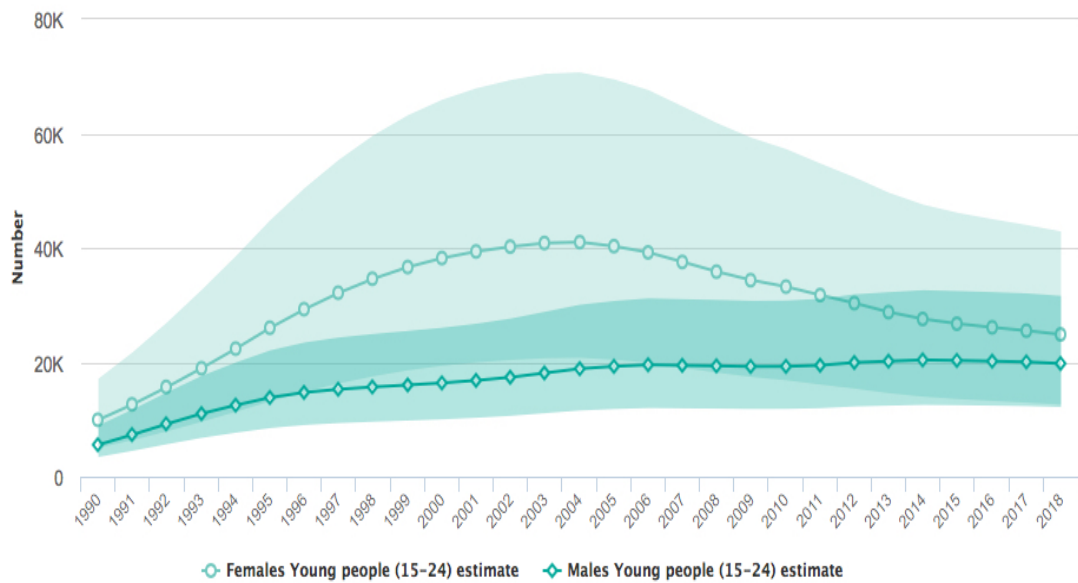


AIDS-related deaths

AIDS-related deaths among young people (15-24)

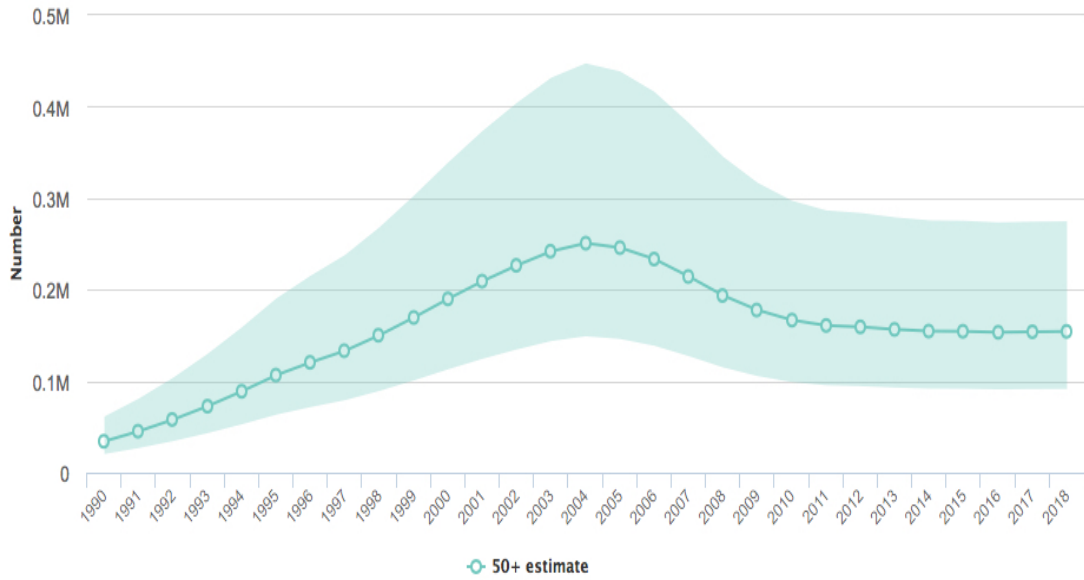


AIDS-related deaths among young people (15-24) - by sex



AIDS-related deaths

AIDS-related deaths among people aged 50+



AIDS-related deaths among people aged 50+ - by sex

