



SOUTHERN AFRICA

Cyclone Idai Snapshot (as of 26 March 2019)

OVERVIEW

Tropical Cyclone Idai made landfall during the night of 14 to 15 March 2019 near Beira City, Sofala Province, in central Mozambique. The cyclone brought torrential rains and winds to Sofala, Zambezia, Manica and Inhambane provinces. The strength of the storm diminished as it crossed land. However, it continued to bring strong winds and heavy rains as it made its way across central Mozambique and into eastern Zimbabwe. Southern Malawi received heavy rains in the days prior to the cyclone landfall.

Flooding caused by the Tropical Cyclone Idai weather system since early March has affected nearly 3 million people and caused at least 678 deaths in Malawi, Mozambique and Zimbabwe. In Malawi, about 868,900 people have been impacted, with 59 deaths and 672 injuries recorded, according to the government. Nearly 87,000 people are estimated to be displaced. While rapid needs assessments have been conducted in Nsanje and Phalombe districts, they continue in Machinga, Mangochi and Zomba to verify initial estimates and determine the total number of people in need of immediate humanitarian assistance. In Mozambique, about 1.85 million people have been affected, with at least 447 deaths. Nearly 129,000 people have been accommodated in 143 sites across Sofala (103 sites), Manica (26 sites), Zambezia (10 sites) and Tete (4 sites), as of 25 March. Health and education facilities have suffered significant damage, with more than 3,100 classrooms and 45 health centres impacted. Some 72,260 houses have been totally destroyed, partially destroyed or flooded, according to government reports. In addition, more than 474,150 hectares of crops have been damaged, which will impact food security in the months ahead, particularly as the losses coincide with the annual harvest period. In Zimbabwe, at least 172 deaths have been reported, more than 186 people have been injured and 327 are missing, according to the government. In Chimanimani and Chipinge districts, at least half of the total population has been impacted, according to the preliminary findings of an inter-sector assessment mission which confirmed significant damage. At least 16,000 households need shelter assistance in Chimanimani, Mutare, Chipinge and Buhera, according to the government.

Humanitarian response is ongoing in Malawi, Mozambique and Zimbabwe, led by the respective governments. However, significant response challenges remain, as heavy rains have damaged roads and main access bridges have been washed away.

KEY FIGURES*

MALAWI

- 868,900** people affected
- 86,980** displaced
- 59** deaths
- 672** injuries

MOZAMBIQUE

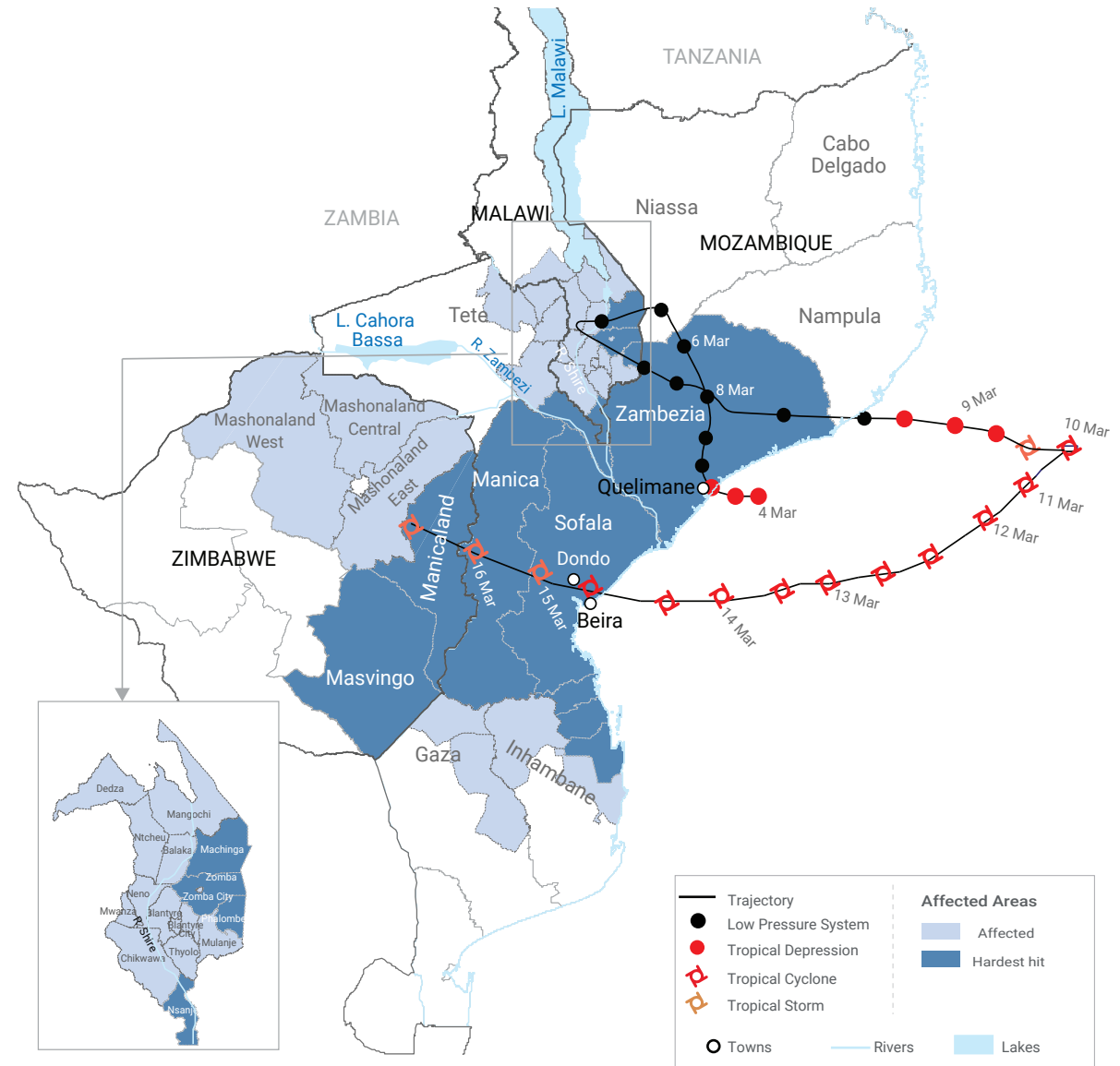
- 1.85m** people affected
- 129,000** displaced
- 447** deaths
- 1,522** injuries

ZIMBABWE

- 270,000** people affected
- 4,500** displaced
- 172** deaths
- 186** injuries

For more details see the flash updates here: <https://bit.ly/2Cvxssh>

CYCLONE AND FLOOD AFFECTED AREAS



The boundaries and names shown and the designations used on this map do not imply official endorsement or acceptance by the United Nations.

* All figures in this Snapshot are preliminary only and are subject to change in the coming days as further information becomes available and needs assessments are completed.

Creation date: 26 March 2019 Sources: Governments of Malawi, Mozambique & Zimbabwe, UN Resident Coordinator Offices in Malawi, Mozambique & Zimbabwe, ECHO, GDACS, UNITAR, OCHA Feedback: ocharosea@un.org www.unocha.org/rosea www.reliefweb.int