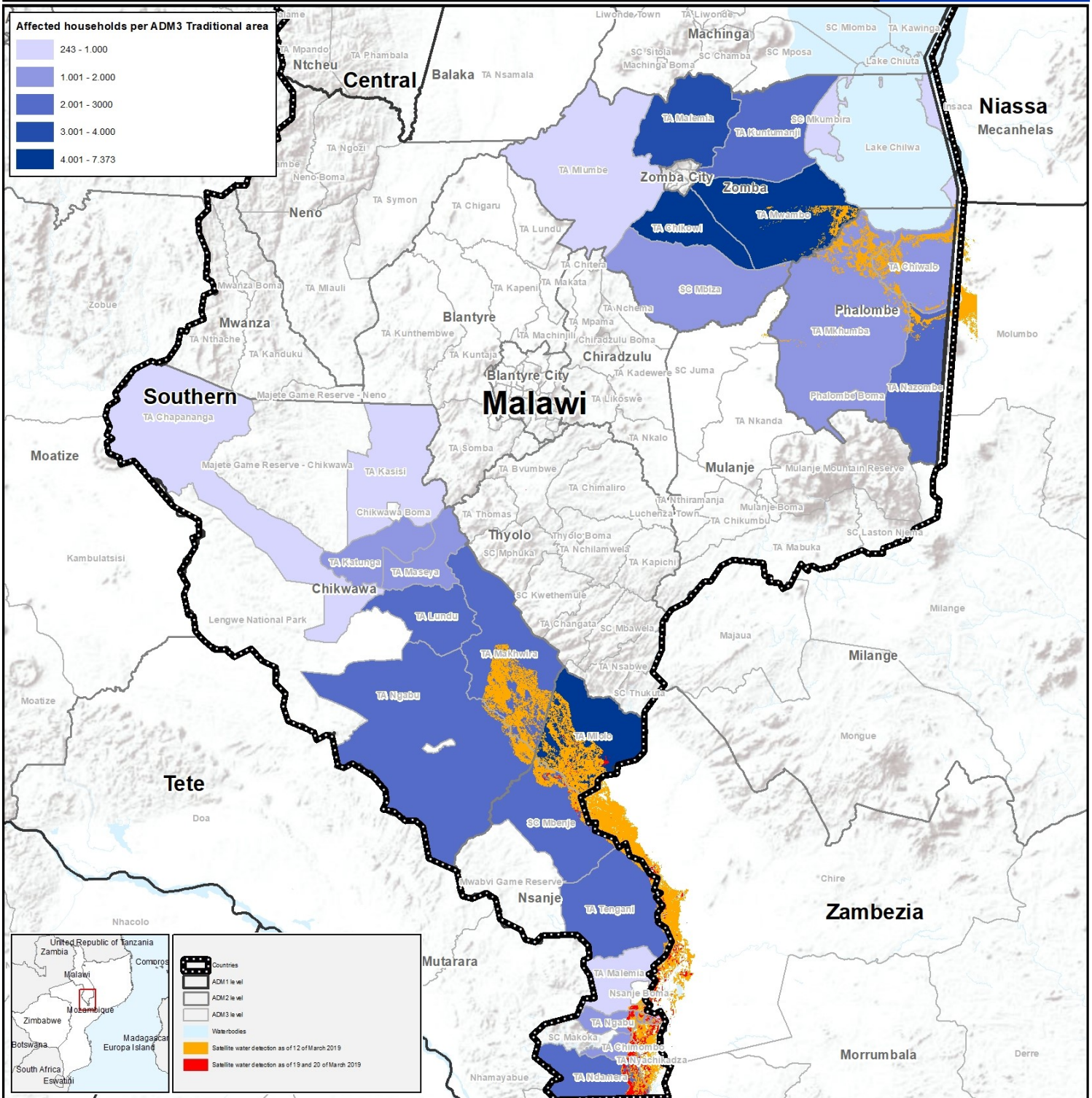


## SITUATION OVERVIEW

Since the beginning of March 2019, Malawi has experienced flooding and sustained heavy rain caused by the Tropical Cyclone Idai weather system. According to IOM Malawi, 81,613 households (HH) have been affected across four districts in the south of the country, specifically Chikwawa (12,755 HH), Zomba (29,892 HH), Phalombe (22,848 HH) and Nsanje (16,118 HH).

IOM will continue to carry out assessments to verify the data collected.

**81,613**  
Affected  
Households



**Disclaimer:** This map is for illustration purposes only. Names and boundaries on this map do not imply official endorsement or acceptance by IOM. Administrative boundaries have not been updated to reflect some traditional areas, which are missing at admin level 3.

### Data Source

Flood Analysis: UNITAR - UNOSAT March 2019  
Affected Household Information: IOM Malawi  
Admin boundaries: OCHA, IOM