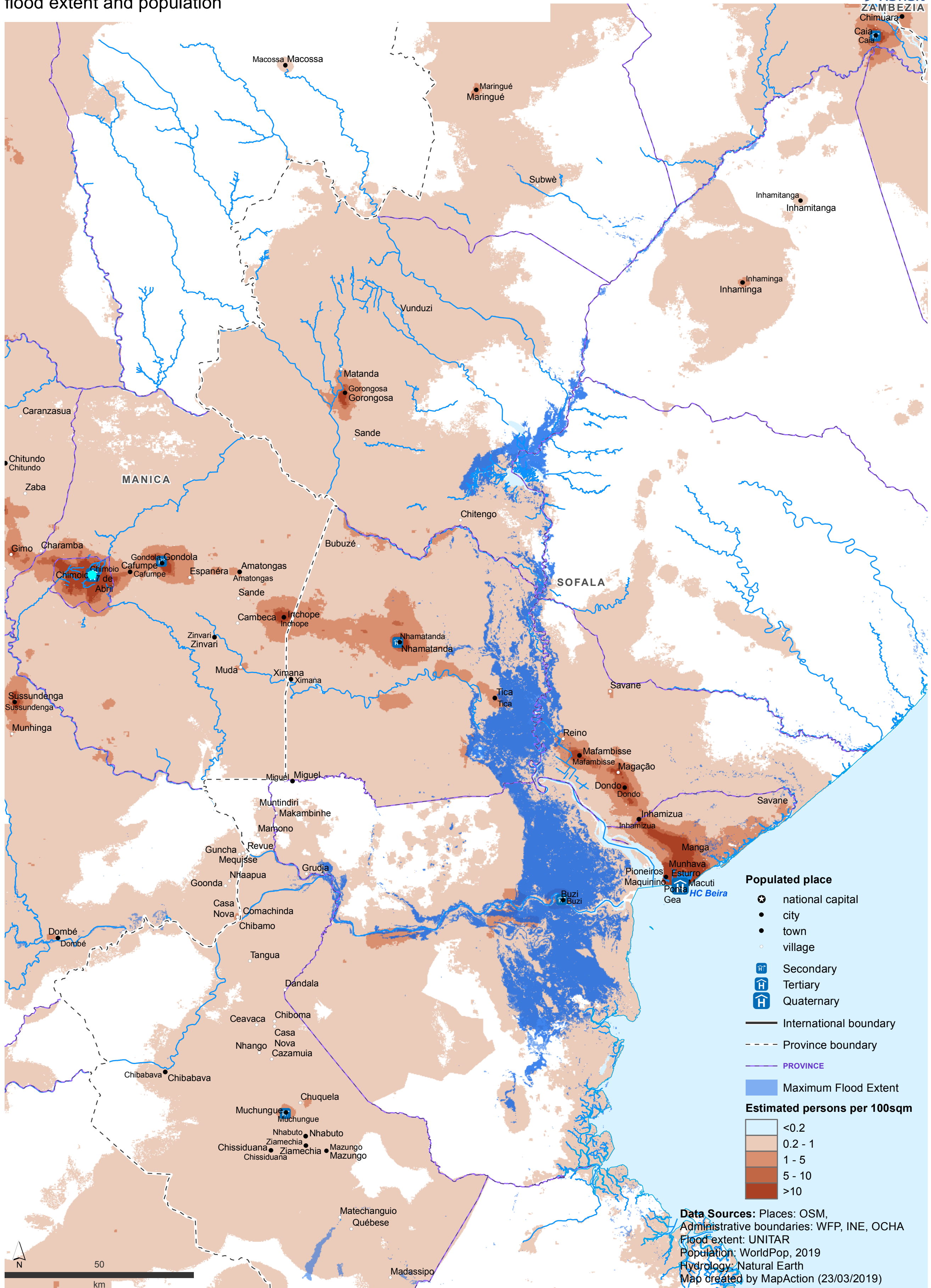


# Mozambique: Cyclone Idai: 2nd, 3rd and 4th level health facilities, flood extent and population

MA019 v1



**Populated place**

- 🏛️ national capital
- city
- town
- village
- 🏠 Secondary
- 🏠 Tertiary
- 🏠 Quaternary
- International boundary
- - - Province boundary
- PROVINCE
- 🟦 Maximum Flood Extent

**Estimated persons per 100sqm**

Lightest Blue	<0.2
Light Blue	0.2 - 1
Medium Blue	1 - 5
Dark Blue	5 - 10
Darkest Blue	>10

**Data Sources:** Places: OSM, Administrative boundaries: WFP, INE, OCHA  
 Flood extent: UNITAR  
 Population: WorldPop, 2019  
 Hydrology: Natural Earth  
 Map created by MapAction (23/03/2019)

