

Mozambique, Zimbabwe | Tropical Cyclone IDAI Impact Overview

EU response

The European Commission allocated an emergency aid package of €3.5 million on 19/03. The funding will be used to provide logistical support to reach affected people, emergency shelter, hygiene, sanitation, and health care. Out of the aid package, based on needs, €2 million will be provided in Mozambique, €1 million in Malawi and €0.5 million in Zimbabwe.

ZIMBABWE

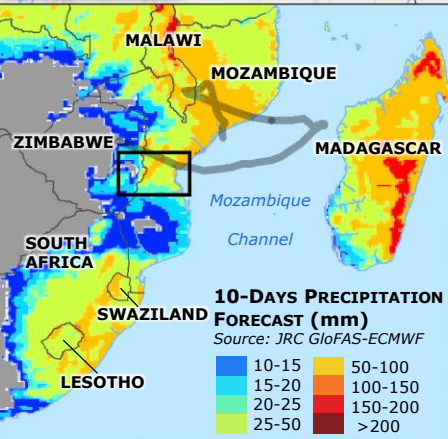
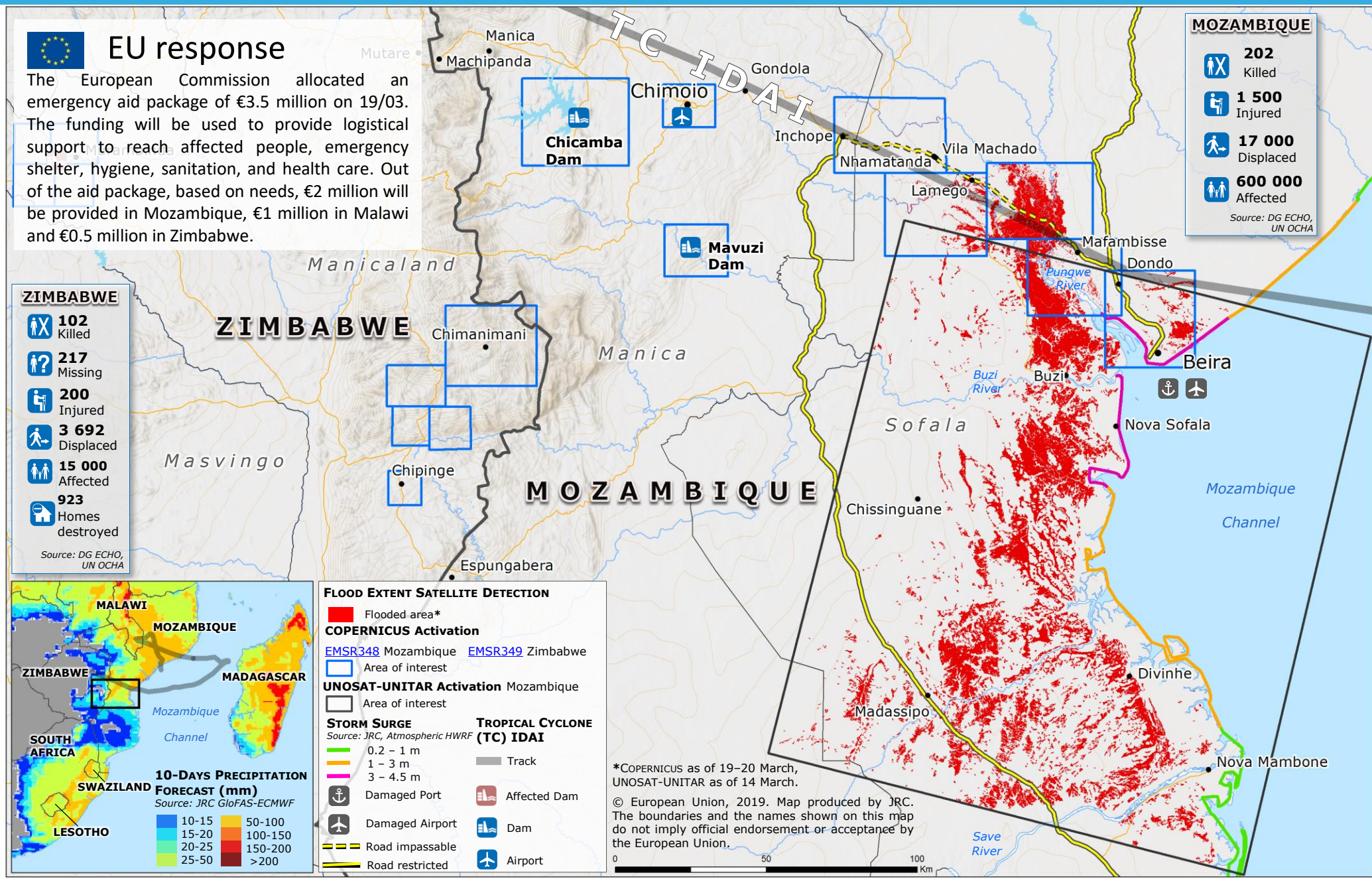
- 102 Killed
- 217 Missing
- 200 Injured
- 3 692 Displaced
- 15 000 Affected
- 923 Homes destroyed

Source: DG ECHO, UN OCHA

MOZAMBIQUE

- 202 Killed
- 1 500 Injured
- 17 000 Displaced
- 600 000 Affected

Source: DG ECHO, UN OCHA



FLOOD EXTENT SATELLITE DETECTION

- Flooded area*

COPERNICUS Activation

- EMSR348 Mozambique EMSR349 Zimbabwe
- Area of interest

UNOSAT-UNITAR Activation Mozambique

- Area of interest

STORM SURGE

Source: JRC, Atmospheric HWRF

- 0.2 – 1 m
- 1 – 3 m
- 3 – 4.5 m

TROPICAL CYCLONE (TC) IDAI

Source: JRC, Atmospheric HWRF

- Track
- Damaged Port
- Damaged Airport
- Road impassable
- Road restricted
- Affected Dam
- Dam
- Airport

*COPERNICUS as of 19–20 March, UNOSAT-UNITAR as of 14 March.

© European Union, 2019. Map produced by JRC. The boundaries and the names shown on this map do not imply official endorsement or acceptance by the European Union.