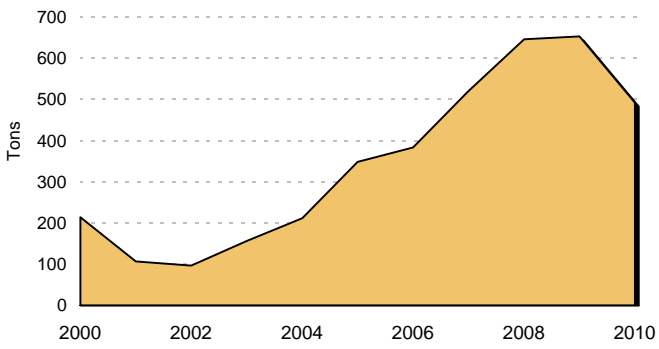
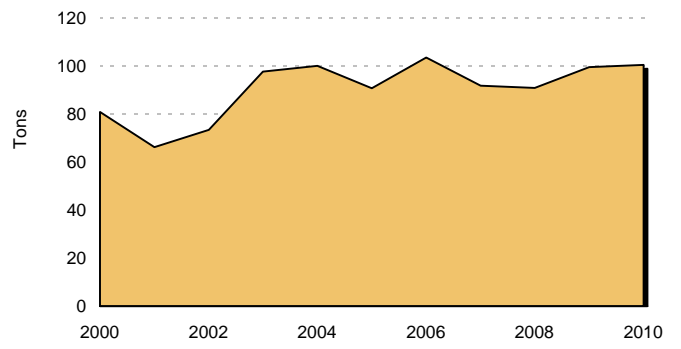


TRENDS IN WORLD SEIZURES: 2000 - 2010
(in tons)

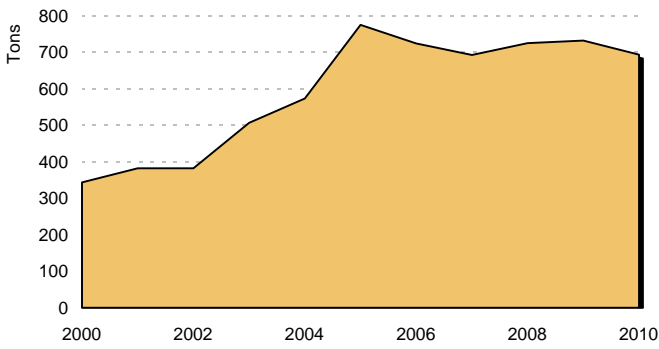
OPIUM



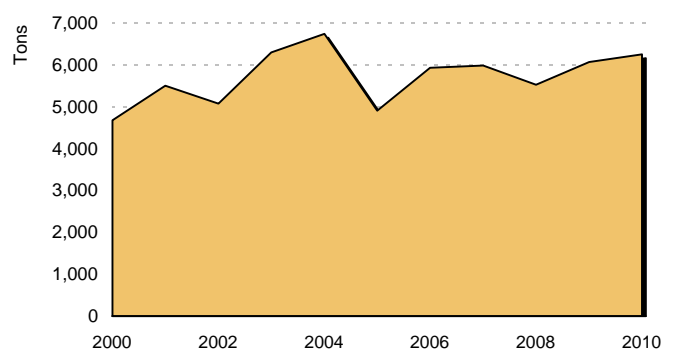
HEROIN AND MORPHINE



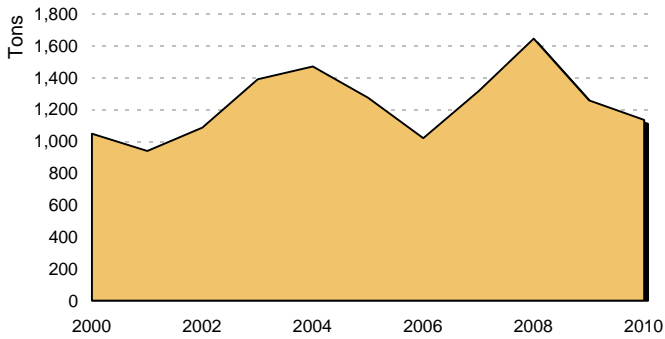
COCAINE



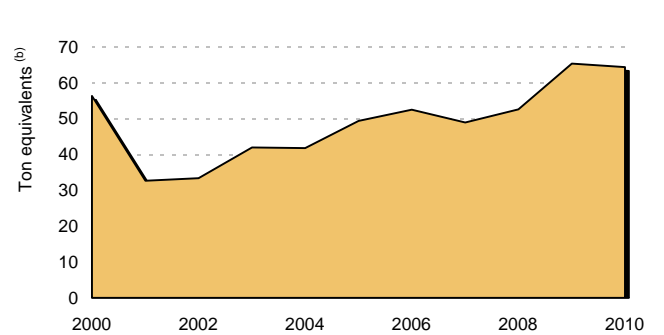
CANNABIS HERB



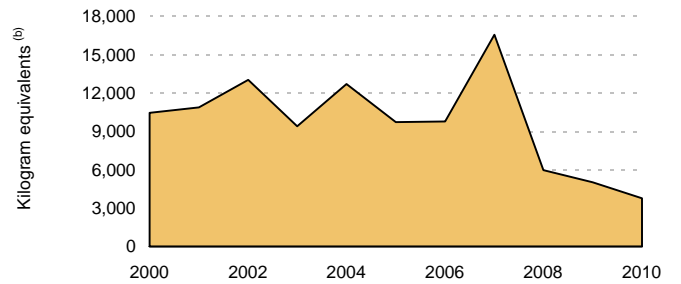
CANNABIS RESIN



ATS (excluding "ecstasy")^(a)



"ECSTASY"



^(a) Including amphetamine, methamphetamine, non-specified amphetamine-type stimulants, other stimulants and prescription stimulants. For the categories of other stimulants and prescription stimulants, seizures reported only by weight or volume are included.

^(b) 1 litre is assumed to be equal to 1 kg. Other conversion factors are listed in the methodology section.