

## People in Affected Areas



## Response Coordination

**2** affected localities with functioning partner coordination mechanism  
*(66% of target)*

## WASH

**53** health facilities in affected health zones provided with essential WASH services  
*(38% of target)*

**177** schools in high risk areas provided with handwashing facilities  
*(70% of target)*

**344** community sites (ports, market places, offices etc) provided with handwashing facilities in the affected areas

**563,832** people with access to safe water source in the affected areas  
*(83% of target)*

## C4D

**3,202** members of specific-groups reached through community engagement and interpersonal communication activities \*  
*(91% of target)*

**2,122** frontline workers (RECO) in affected zones mobilized on Ebola response and participatory community engagement approaches  
*(68% of target)*

**2,731,224** at-risk people reached through community engagement and interpersonal communication approaches \*\*  
*(76% of target)*

**132** households for which personalized house visits was undertaken to address serious misperception about Ebola, refusals to secure burials or resistance to vaccination  
*(88% of target)*

**6,343** listed eligible people for vaccination informed of the benefits of the vaccine and convinced to receive the vaccine within required protocols  
*(99% of target)*

## Psychosocial Support & Protection

**127** families of confirmed or probable cases received psychosocial support and/or material  
*(100% of target)*

**436** contact family members, including children, received psychosocial support and/or material assistance  
*(48% of target)*

**121** unaccompanied children and orphans identified received appropriate care and psychosocial support  
*(81% of target)*

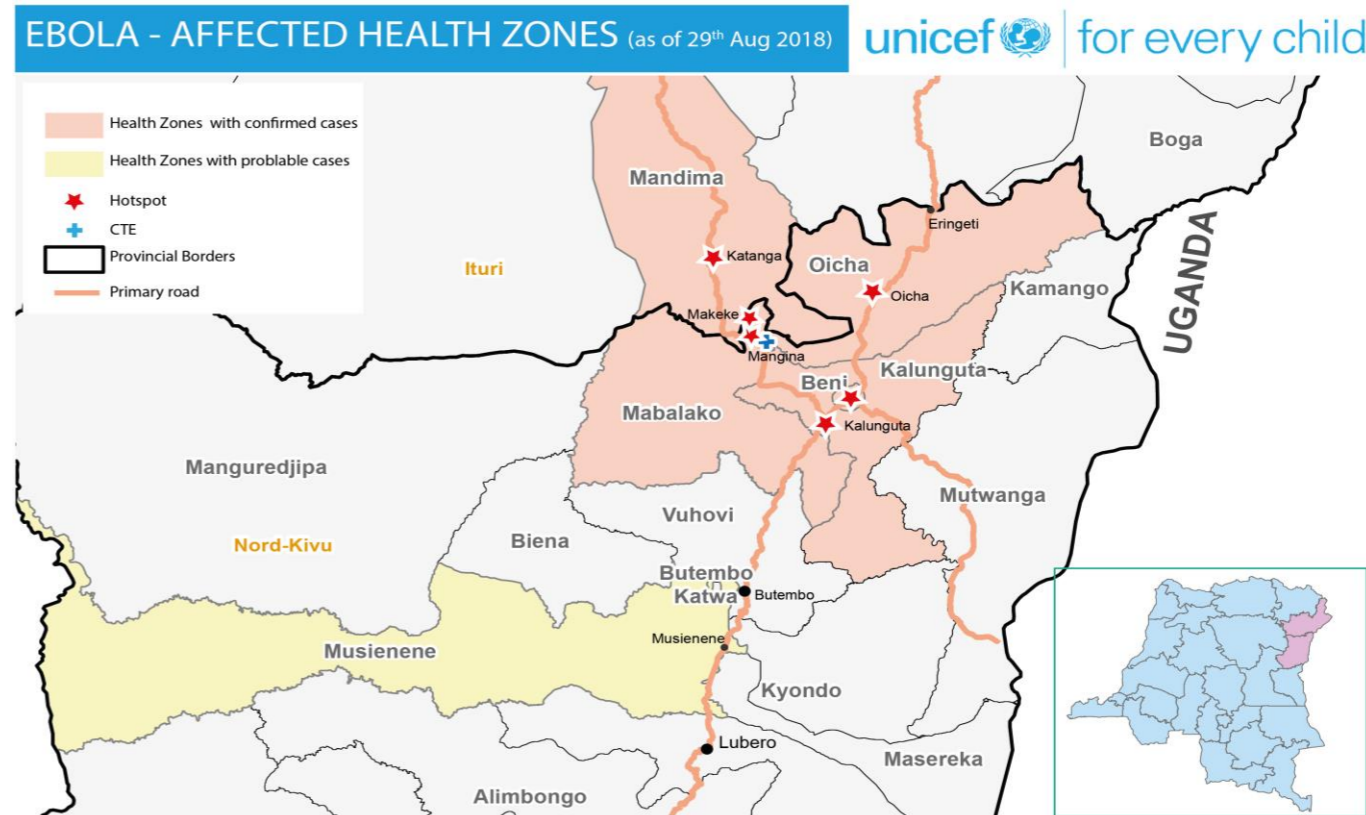
## Situation - Key Numbers

MoH, 04-Sep-18

**127** Total cases  
• 67% in Mabalako HZ  
• 87 (69%) deaths

**2400** contacts under surveillance

## Affected Health Zones



Disclaimer: The boundaries and names shown and the designations used on this map do not imply official endorsement or acceptance by the UN

## Education

**923** school children reached with Ebola prevention information  
*(1% of target)*

**1,590** teachers briefed on Ebola prevention information  
*(91% of target)*

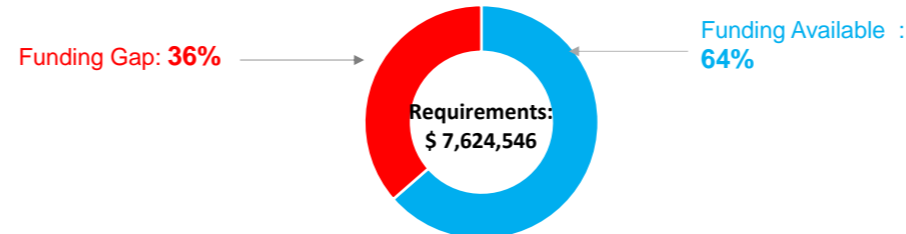
## Supply and Logistics

Since the beginning of the response, USD \$882,384 to USD \$1,256,039 worth of items have been deployed for the Ebola response in Ituri and North Kivu province, composed of 3,566 buckets, 2,930kg of chlorine, 605 jerry cans of 20 liters, 648 handwashing kits, 28 motorbikes, and 199 chlorine sprayers, 2,109 boxes of soap, 14 tents, and 836 infrared thermometers.

## UNICEF's Capacity

**58** local surge UNICEF staff members have been deployed to the affected health zones in North Kivu and Ituri province, and an additional 6 international surge in WASH, coordination, and operations are on the ground to support the Ebola response. 17 staff in WASH, Child Protection, Security and communications are currently under recruitment to support UNICEF's interventions.

## Funding



## Key Donors

- Geographic reprogramming from World Bank (PEF), USAID, ECHO, Japan
- Funds received from GAVI, CERF, German NatCom and USAID

## Coordination and Key Partners

UNICEF continues to participate actively in the coordination mechanisms at national level, provincial, and local level and co-leads the commissions on communication, WASH and psychosocial care; and active in the working groups on logistics and vaccination. Beni currently serves as the operational headquarters for UNICEF's response. A UNICEF security specialist is also deployed in the field to support security assessment and safety of the operations.

Mabalako health zone remains the most concerning area for the response due to the high number of reported confirmed and probable cases.

\* Examples: CAC, religious leaders, opinion leaders, educators, motorists, RECO, military, journalists, meat sellers, drivers, youth groups, other  
 \*\* Examples: door-to-door, church meetings, small-group training sessions, school classes, briefings with leaders and journalists, other