



WHO vaccine-preventable diseases: monitoring system. 2018 global summary

Last updated 1-Jun.-2018 (data as of 25-May-2018)
Next overall update Mid-July 2018



Select a country

Rwanda

Development status: Least developed **GNI / capita (US\$):** 700¹ **Infant (under 12 months) mortality rate:** 29²
GDP / capita (US\$): 1'759¹ **Child (under 5 years) mortality rate:** 39²

Population data in thousands³

	2017	2016	2015	2014	2013	2000	1990	1980
Total population	12'208	11'918	11'630	11'345	11'065	8'026	7'236	5'141
Births	372	371	370	369	368	308	316	278
Surviving infants	358	357	355	354	352	278	250	245
Pop. less than 5 years	1'749	1'740	1'735	1'724	1'715	1'313	1'418	1'061
Pop. less than 15 years	4'900	4'823	4'745	4'660	4'575	3'555	3'573	2'468
Female 15-49 years	3'091	3'000	2'914	2'836	2'763	1'952	1'569	1'131

(Click for retrospective incidence data for Rwanda)

Number of reported cases

	2017	2016	2015	2014	2013	2000	1990	1980
Diphtheria	—	0	0	0	0	0	14	3
Japanese encephalitis	0	—	0	—	—	—	—	—
Measles	145	95	1	10	17	2'095	8'970	80'402
Mumps	—	1'809	—	0	—	—	—	—
Pertussis	0	0	0	—	—	0	177	16'189
Polio*	0	0	0	0	0	0	0	24
Rubella	22	15	1	15	50	—	—	—
Rubella (CRS)	0	0	0	—	—	—	—	—
Tetanus (neonatal)	1	2	—	0	0	5	1	—
Tetanus (total)**	—	2	6	0	0	10	18	103
Yellow fever	—	0	0	0	0	0	—	—

* Polio refers to all polio cases (indigenous or imported), including polio cases caused by vaccine derived polio viruses (VDPV). For disaggregated data please click on this hyperlink: <https://extranet.who.int/polis/public/CaseCount.aspx>

it does not include cases of vaccine-associated paralytic polio (VAPP) and cases of non polio acute flaccid paralysis [AFP].

** Neonatal Tetanus and Total Tetanus cases equality may be the result from a lack of non-Neonatal Tetanus surveillance system.

Percentage target population vaccinated by antigen

Hovering over an antigen reveals its fuller definition

Most recent coverage survey⁴

Official country estimates⁵

(Click for retrospective coverage estimates data for Rwanda)

Vaccine	year	result	method	% card seen	2017	2016	2015	2014	2013	2000	1990	1980
BCG	2013	99	DHS	94	99*	99	99*	99	99*	81	57	—
DTP1	2013	99	DHS	94	99*	99	99*	99	99*	93	—	—
DTP3	2013	98	DHS	94	99*	98	99*	98	99*	90	57	—
DTP4					—	—	—	—	—	—	—	—
IPV1					—	—	—	—	—	—	—	—
HepB_BD					—	—	—	—	—	—	—	—
HepB3	2013	98	DHS	94	99*	98	99*	98	99*	—	—	—
Hib3	2013	98	DHS	94	99*	98	99*	98	99*	—	—	—
JapEnc					—	—	—	—	—	—	—	—
MCV1					99*	95	99*	97	99	57	55	—
MCV2					95	90	87	77	—	—	—	—
MenA					—	—	—	—	—	—	—	—
PCV1					99*	99	99*	99	99*	—	—	—
PCV2					99*	99	99*	99	99*	—	—	—
PCV3	2012	98	EPI	80	99*	98	99*	98	99*	—	—	—
Pol3	2013	97	DHS	94	99*	99	99*	98	99*	90	58	—
Rota1					99*	99	99*	99	99*	—	—	—
RotaC					99*	98	99*	98	99*	—	—	—
RCV1					99*	95	99*	97	—	—	—	—
TT2plus	2013	34	DHS	94	91	82	99	92	78	—	87	—
PAB					—	—	—	—	—	—	—	—
VAD1					—	—	—	—	—	—	—	—
YFV					—	—	—	—	—	—	—	—

* indicates the country reported above 100% coverage.

Next update: Mid-July 2018

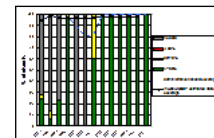
WHO-UNICEF estimates⁶

(Click for full retrospective WHO-UNICEF coverage estimates data for Rwanda)

Vaccine	2017	2016	2015	2014	2013	2000	1990	1980
BCG	—	99	99	99	99	81	92	—
DTP1	—	99	99	99	99	93	94	—
DTP3	—	98	98	98	98	90	84	—
HepB3	—	98	98	98	98	—	—	—
HepB_BD	—	—	—	—	—	—	—	—
Hib3	—	98	98	98	98	—	—	—
IPV1	—	—	—	—	—	—	—	—
MCV1	—	96	96	97	95	74	83	—
MCV2	—	87	87	—	—	—	—	—
PCV3	—	98	98	98	98	—	—	—
Pol3	—	99	99	98	98	90	83	—
RCV1	—	96	96	—	—	—	—	—
RotaC	—	98	98	98	98	—	—	—
YFV	—	—	—	—	—	—	—	—

Click for WHO-UNICEF coverage estimates data for PAB time series.

Number of districts in the country	30	Proportion of districts reporting DTP3 coverage:	Greater or equal to 90%	80
% of coverage reports received at national level vs number of reports expected	100		From 80 to 89%	20
			From 50 to 79%	0
			Less than 50%	0
		Proportion of districts not reporting DTP3 coverage		0



Immunization Schedule (2017 or latest available)

Hovering over an antigen reveals its fuller definition

Vaccine	Schedule	Entire country	Comment
BCG	birth;	Yes	
DTwPHibHepB	6, 10, 14 weeks;	Yes	
HPV	1st contact; +6 months;	Yes	12 year old females
MR	9, 15 months;	Yes	
OPV	birth; 6, 10, 14 weeks;	Yes	
Pneumo_conj	6, 10, 14 weeks;	Yes	
Rotavirus	6, 10, 14 weeks;	Yes	
TT	1st contact pregnancy; +1, +6 months; +1, +1 year;	Yes	

Immunization indicators

Indicator	Expected answer	2017	2016	2015	2014	2013	2012	2011
Planning and management								
Has the country a Multi-Year Plan (MYP) for immunization?	Yes/No/NR	Yes	Yes	Yes	Yes	Yes	Yes	Yes
What years does the MYP cover?	number	2017-2021	2012-2017	2015-2019	2012-2017	2012-2017	2013-2017	2013-2017
N° of districts with microplans that include activities to raise immunization coverage	number	30	30	30	30	30	30	30
System performance								
Total N° districts in country	number	30	30	30	30	30	30	30
N° districts with DTP3 coverage >=80%	number	30	30	35	30	30	30	18
% of districts with DTP3 coverage >=80%	From 0 to 100%	100	100	117	100	100	100	60
N° districts with measles (MCV1) coverage >=95%	number	20	18	18	16	19	26	2
% of districts with MCV1 coverage >=95%	From 0 to 100%	67	60	60	53	63	87	7
Safety								
Has the country a vaccine adverse events review committee?	Yes/No/NR/ND	Yes	No	Yes	Yes	Yes	No	Yes
Is there a national system to monitor adverse events following immunization (AEFI)?	Yes/No/NR	Yes	Yes	Yes	Yes	Yes	Yes	Yes
Finance								
% of Immunization expenditure financed, using Government funds?	From 0 to 100%	15	10	20	11	16	50	94
National Immunization Advisory Mechanism								
Has the country a standing technical advisory group on immunization (NITAG)?	Yes/No/NR	Yes	No	No	No	No	No	No

Sources

- 1 "The 2017 World Bank Development Indicators Online", GDP per capita is PPP adjusted.
- 2 World Health Statistics 2016, data for 2018
- 3 "United Nations, Population Division. The World Population Prospects - the 2017 revision". New York, 2017.
- 4 UNICEF/WHO survey database
- 5 If no official estimate is available, the administrative coverage is reported. ** indicates coverage over 99.5%.
- 6 WHO-UNICEF estimates.