

PEOPLE IN NEED

17.8M

PEOPLE TARGETED

8.8M

REQUIREMENTS (US\$)

1.27BN

OF PARTNERS

94

FSA OBJECTIVE 1

1 Improve immediate household availability of and access to food for the most vulnerable

FSA OBJECTIVE 2

2 Ensure equitable access to assistance and protection for the most vulnerable.

FSA OBJECTIVE 3

3 Improve household food security for at risk groups by supporting agricultural, livestock and fishery systems and assets

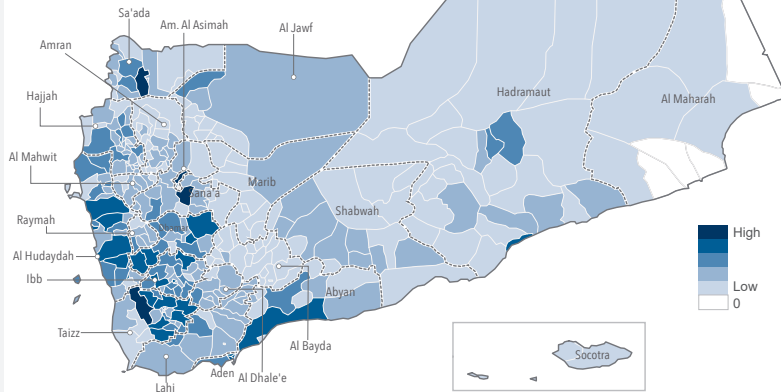
FSA OBJECTIVE 4

4 Strengthen emergency preparedness and response capacity of partners, communities and authorities

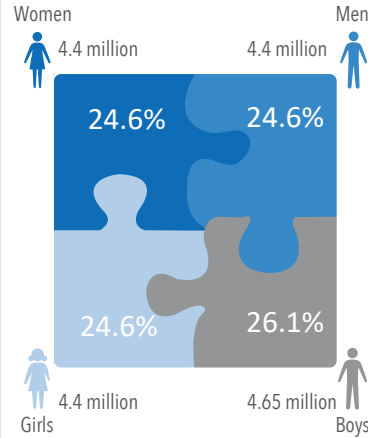
CONTACTS

Feedback: ochayemen@un.org
www.unocha.org/yemen
creation date: 20 February 2018

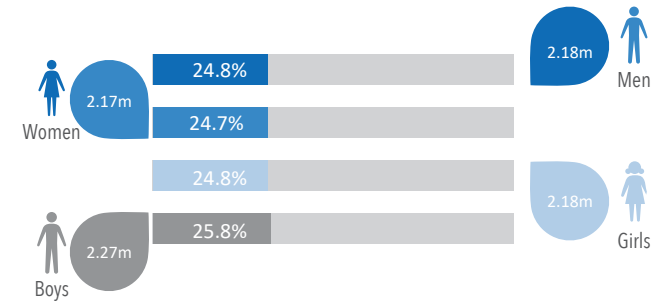
People in need by district (2018)



Total people in need by sex and age

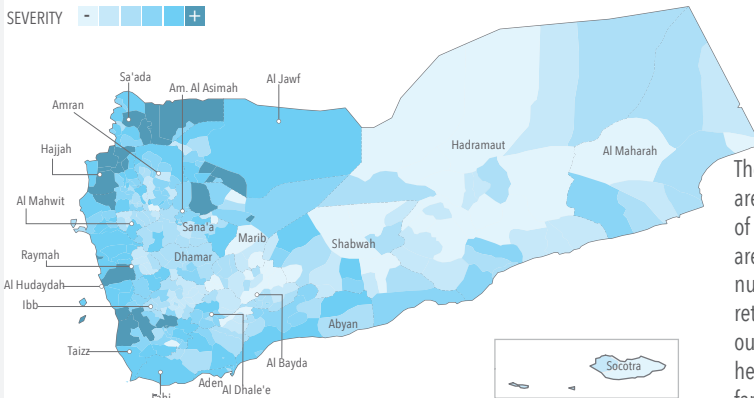


Targets by sex and age



The Food Security and Agriculture Cluster targets 8.8 million people, half of whom are children, with lifesaving food assistance either as in kind /relief food, voucher transfer or cash-based transfer.

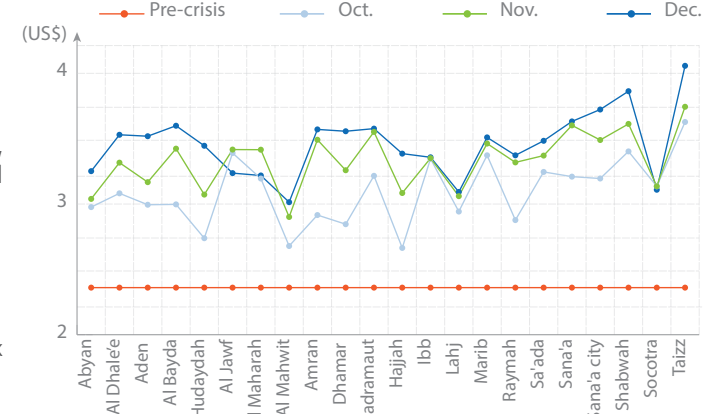
2018 Severity of needs by district



The most severe needs are concentrated in areas of ongoing conflict or in areas with a large number of IDPs and returnees. 107 districts out of 333 are at heightened risk of famine.

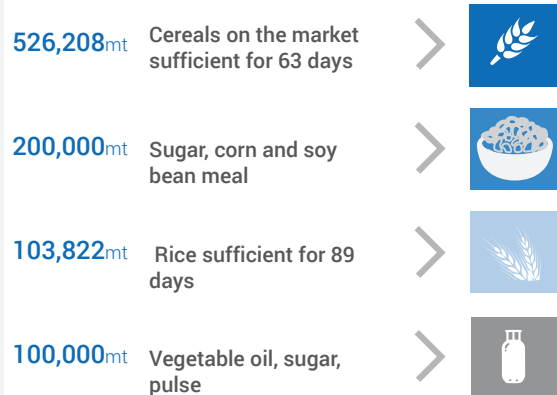
Governorates most affected by the high costs of the minimum food baskets are Taizz, Shabwah, Sana'a, and Al Bayda. In these governorates, the depreciation of the Yemen Rial further exposes poor households to the risk of food insecurity.

Cost of Minimum Food basket by Governorate



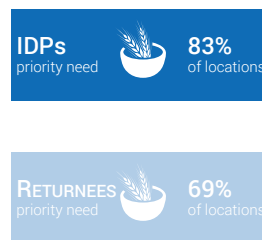
Source: WFP (Dec 2017)

Commercial Food Commodities Available (as of 08 Feb 2018)



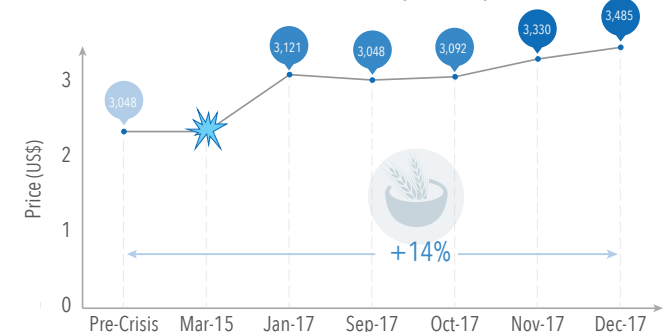
Source: WFP (Feb 2018)

Priority needs (2018)



Access to food was ranked as top priority by over 1,200 affected people responding to a perception survey conducted in May and September 2017

Commodity Prices - By Month 2017



The average cost of the monthly minimum food basket-estimated at 3,485 Yemen Rial in December increased by 4% and 12% from November and October. The national average monthly per capita cost of the minimum food basket is 14% higher than it was during the pre-crisis period.

Source: WFP (Dec 2017)