

HIGHLIGHTS

This **Humanitarian Snapshot** provides an overview of the humanitarian situation in Sudan, as of 31 December 2017, using information obtained from UN agencies and partners, including the Government of Sudan. People living in protracted **displacement** in Darfur since 2003 and those **displaced** or affected by conflict in South Kordofan and Blue Nile states since 2011 account for the majority of the people in need of humanitarian aid. According to a recent update from the Government of Sudan, the number of **IDPs** across the country has reduced from **2.3 million** to about **2 million**. Based on revised estimates, there are about **386,000 returnees** in Sudan. The UN and partners will continue to work with the Government to further verify the **returnees**.

In 2017, about **9,700** people were newly **displaced** in Darfur. An additional **7,000** people were reportedly **displaced**, but this number is not yet verified. In government-controlled areas of South Kordofan, **8,380** people have been reportedly **displaced** in 2017, of whom **4,348** were verified. No new **displacement** was reported in government-controlled areas of West Kordofan and Blue Nile. About **9,000** people were reportedly **displaced** in SPLM-N areas in Blue Nile as a result of internal fighting between SPLM-N factions, however, these reports cannot be verified.

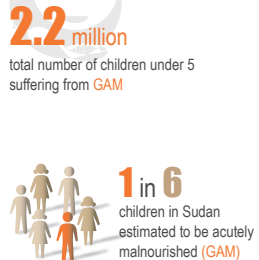
**195,599** South Sudanese **refugees** arrived in Sudan in 2017, with the total number of South Sudanese **refugees** standing at **772,715** as of 31 December 2017. Additional sources estimate a total of **1.3 million** South Sudanese **refugees** in Sudan; however, data requires verification.

FOOD SECURITY OUTLOOK



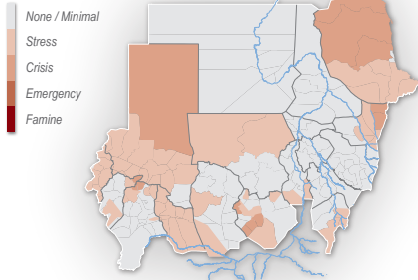
Source: 2017 HNO

GLOBAL ACUTE MALNUTRITION (GAM)



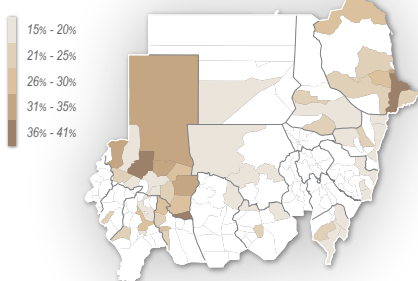
Source: MICS 2014

Projected Food Security Outcomes  
November 2017 to January 2018



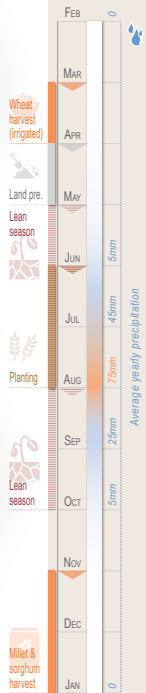
Source: FEWS NET Oct 2017 to May 2018 report

Localities Above Global Acute Malnutrition Emergency Threshold (15%)



Source: Ministry of Health (S3M survey)

Seasonal Calendar



Source: FEWS NET

PEOPLE WHO NEED HUMANITARIAN ASSISTANCE by status



Source: 2017 HNO

INTERNALLY DISPLACED POPULATION

per locality in Darfur & per state in other areas, June 2017



Areas with structural access issues

Sudanese refugees in neighbouring countries as of 31 Dec 2017

Refugees movement

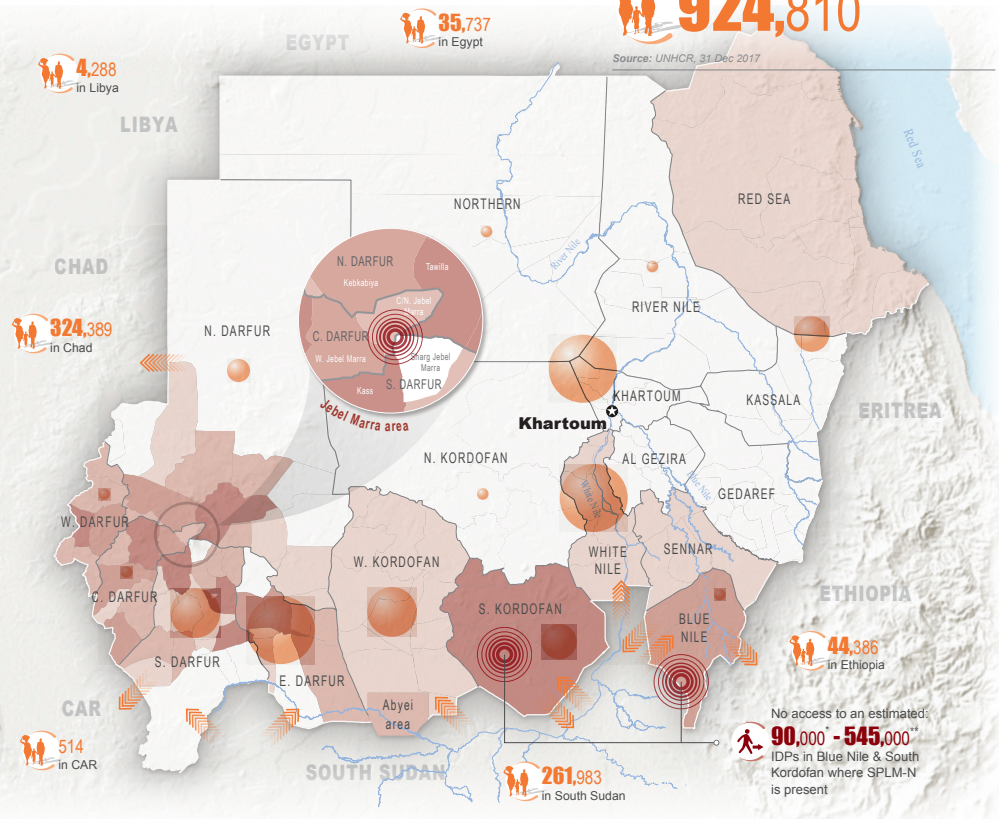
South Sudanese Refugees per state as of 31 Dec 2017



TOTAL REFUGEES & ASYLUM SEEKERS IN SUDAN



Source: UNHCR, 31 Dec 2017



\*HAC, \*\*SRRA, SKBNCU

TIMELINE

