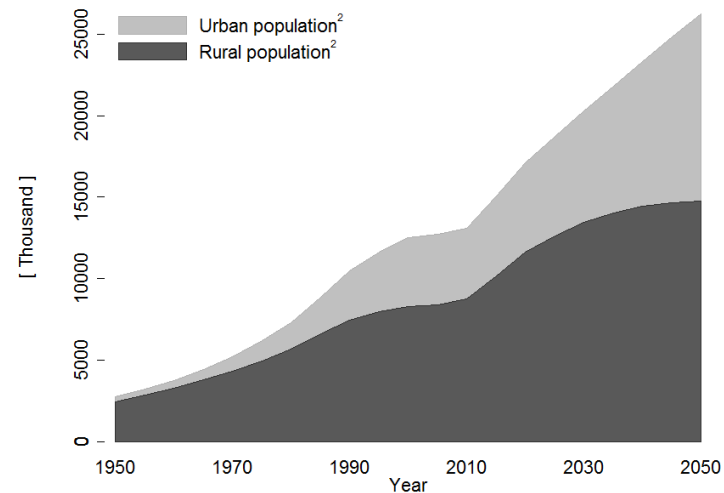
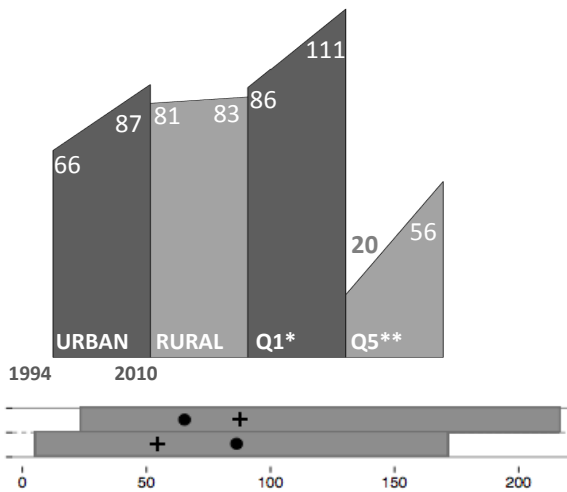


32.5% of the population lived in urban areas in 2014
25.1% or 1.2 million of the urban population live in slums¹



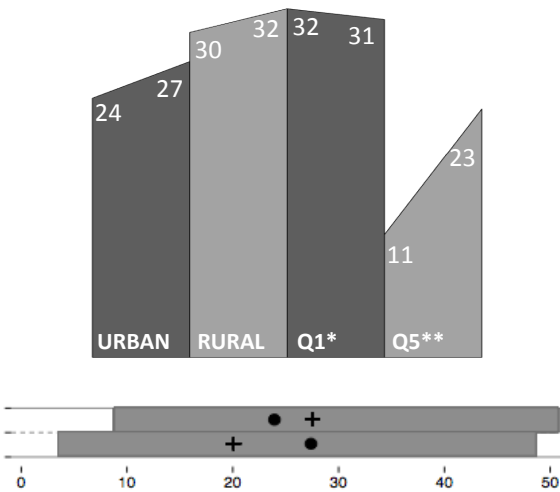
Under 5 mortality rate

Per 1000 live births



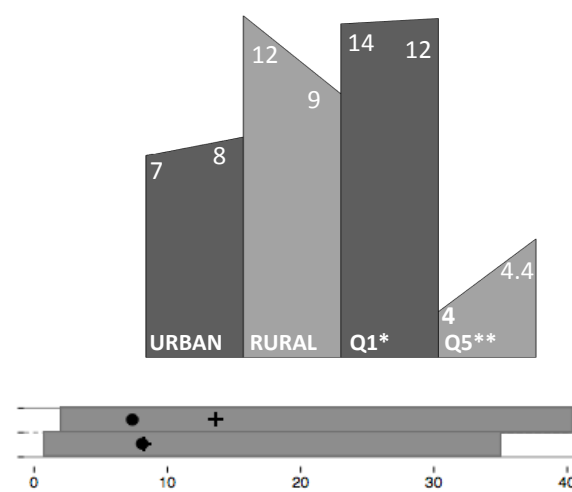
Under 5 Stunting

% children moderately or severely malnourished indicated by low height for age



Underweight children

% of children moderately or severely malnourished indicated by low weight for age



Urban: Urban population Q1* : Poorest 20% of urban population
 Rural: Rural population Q5 **: Wealthiest 20% of urban population

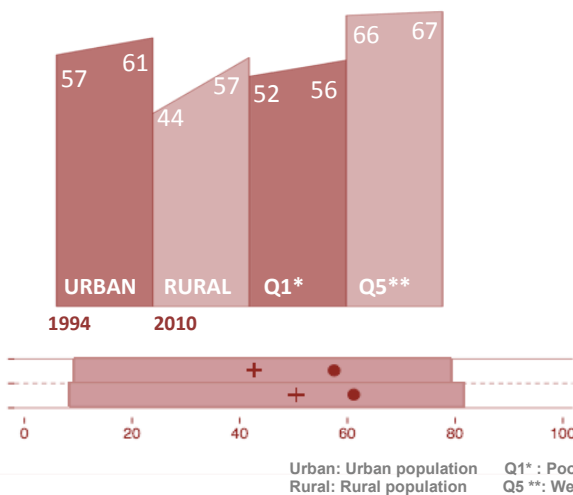
+ : Global average for urban areas ● : Urban estimate for country
 ■ : Global urban range (Upper: 1990-2004, Lower: 2005-2014)

Data source¹ - Latest update at 2014 UN data: URL <https://data.un.org>
 Data source² - URL: <http://esa.un.org/unpd/wup/CD-ROM/Urban-Rural-Population.htm>
 Data source³ - (Unless notified)
 - Demographic Health Survey: URL <http://dhsprogram.com/Data/>

Health determinants

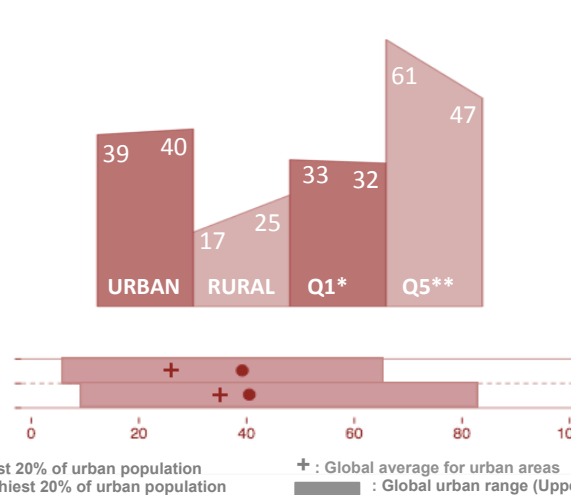
Contraceptive use

% of women that are currently using a contraceptive method



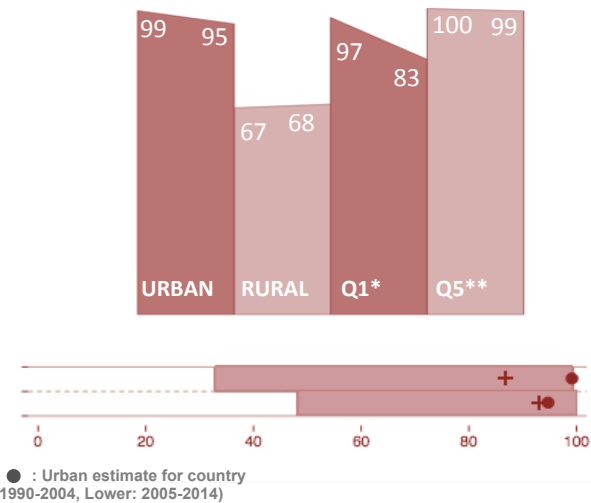
Overweight

% of women with a body mass index greater than 25



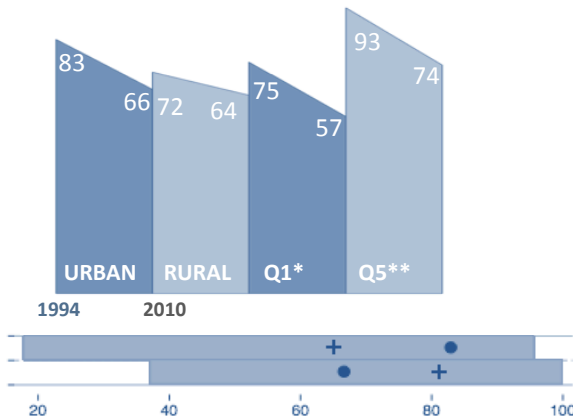
Improved water

% of population using improved drinking-water sources



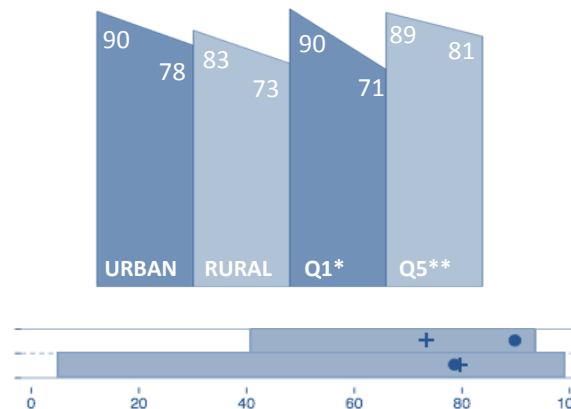
Antenatal care

% of women with at least 4 visits for antenatal care during last pregnancy



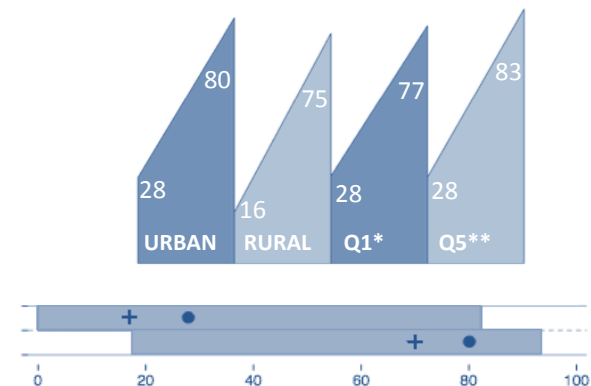
DPT3

% of children ≤5 years who have received 3 doses of the diphtheria-pertussis-tetanus vaccination



Knowledge of HIV/AIDS

% of women who had knowledge about means of avoiding sexual transmission of HIV/AIDS



Health coverage