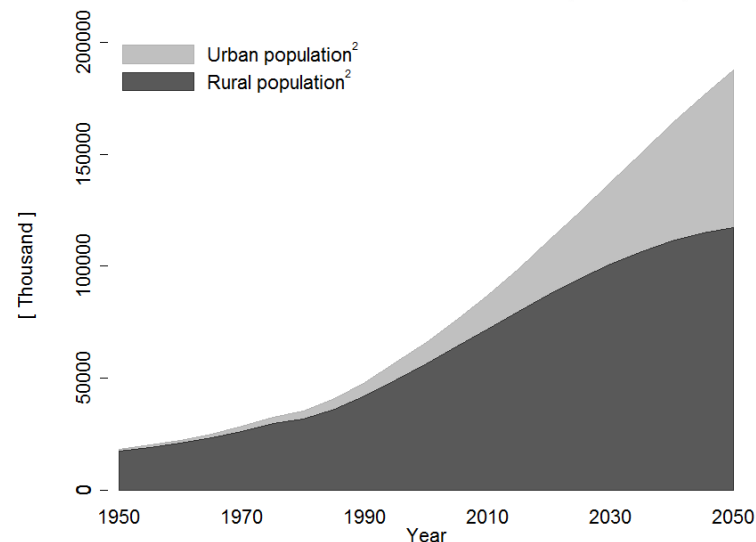
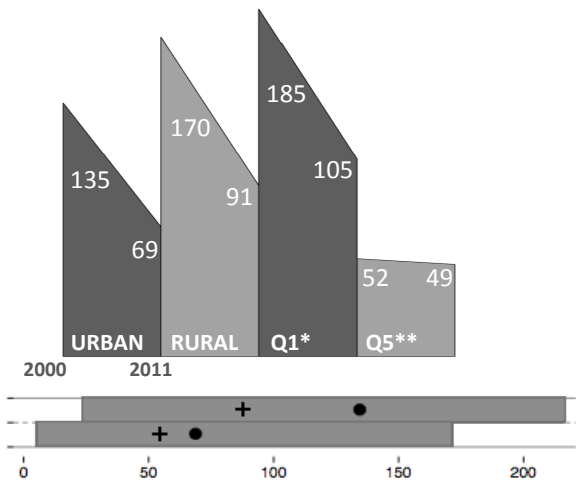


**19.0 %** of the population lived in urban areas in 2014  
**73.9%** or **13.6 million** of the urban population live in slums<sup>1</sup>



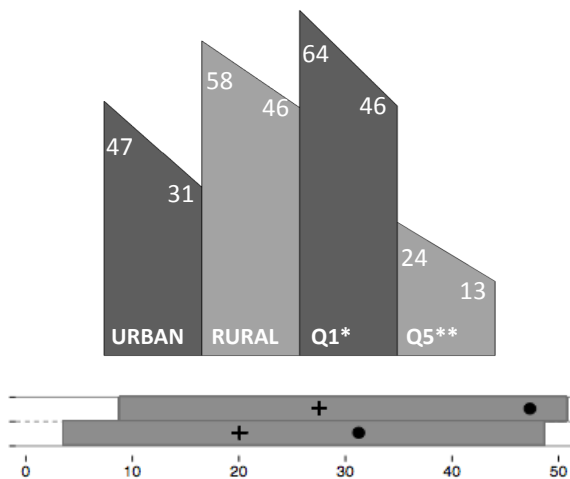
## Under 5 mortality rate

Per 1000 live births



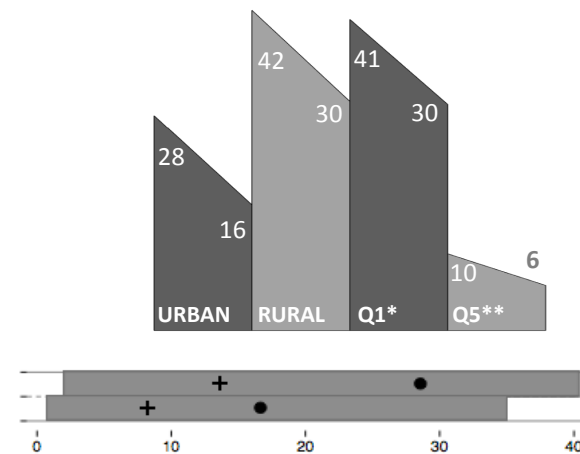
## Under 5 Stunting

% children moderately or severely malnourished indicated by low height for age



## Underweight children

% of children moderately or severely malnourished indicated by low weight for age



Urban: Urban population    Q1\* : Poorest 20% of urban population  
 Rural: Rural population    Q5 \*\*: Wealthiest 20% of urban population

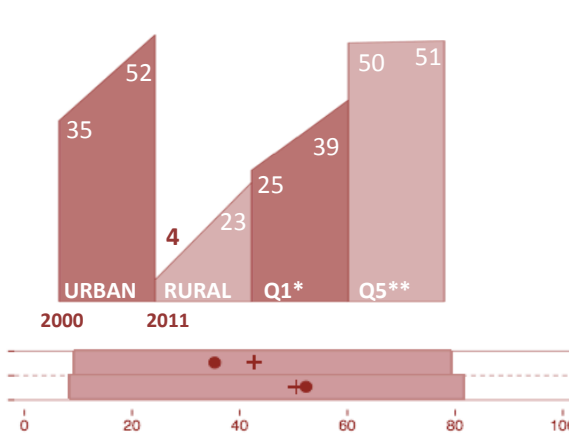
+ : Global average for urban areas    ● : Urban estimate for country  
 [Bar] : Global urban range (Upper: 1990-2004, Lower: 2005-2014)

Data source<sup>1</sup> - Latest update at 2014 UN data: URL <https://data.un.org>  
 Data source<sup>2</sup> - URL: <http://esa.un.org/unpd/wup/CD-ROM/Urban-Rural-Population.htm>  
 Data source<sup>3</sup> - (Unless notified)  
 - Demographic Health Survey: URL <http://dhsprogram.com/Data/>

Health determinants

## Contraceptive use

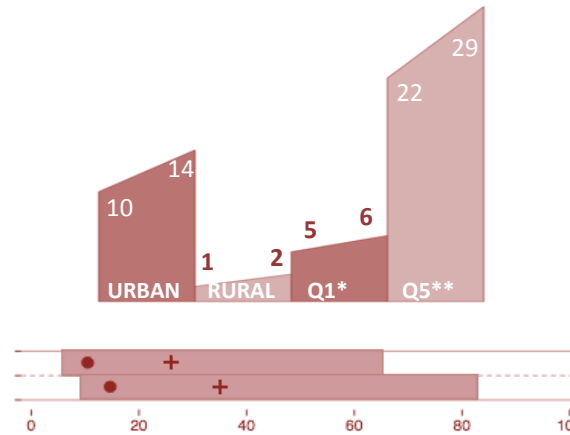
% of women that are currently using a contraceptive method



Urban: Urban population  
Rural: Rural population

## Overweight

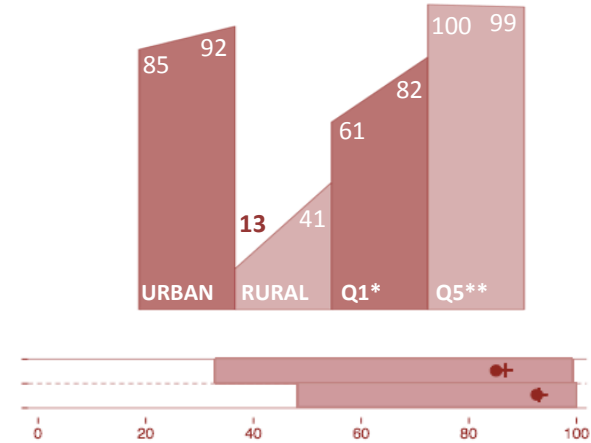
% of women with a body mass index greater than 25



Q1\* : Poorest 20% of urban population  
Q5\*\* : Wealthiest 20% of urban population

## Improved water

% of population using improved drinking-water sources

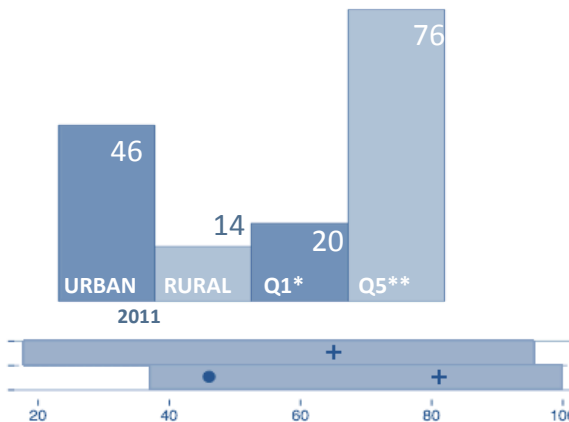


+ : Global average for urban areas  
● : Urban estimate for country  
■ : Global urban range (Upper: 1990-2004, Lower: 2005-2014)

Health coverage

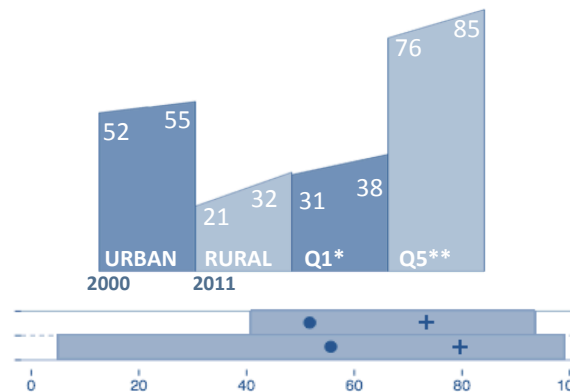
## Antenatal care

% of women with at least 4 visits for antenatal care during last pregnancy



## DPT3

% of children ≤5 years who have received 3 doses of the diphtheria-pertussis-tetanus vaccination



## Knowledge of HIV/AIDS

% of women who had knowledge about means of avoiding sexual transmission of HIV/AIDS

