

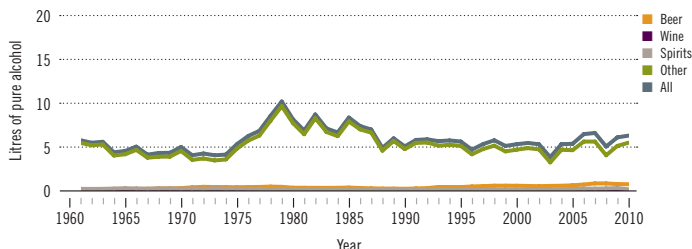
# United Republic of Tanzania

Total population: 44 973 000 ➤ Population aged 15 years and older (15+): 55% ➤ Population in urban areas: 26% ➤ Income group (World Bank): Low income

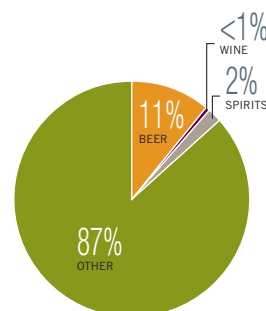
## ALCOHOL CONSUMPTION: LEVELS AND PATTERNS

Recorded alcohol per capita (15+) consumption, 1961–2010

Data refer to litres of pure alcohol per capita (15+).



Recorded alcohol per capita (15+) consumption (in litres of pure alcohol) by type of alcoholic beverage, 2010



Alcohol per capita (15+) consumption (in litres of pure alcohol)

	Average 2003–2005	Average 2008–2010	Change
Recorded	4.8	5.7	↗
Unrecorded	2.0	2.0	→
<b>Total</b>	<b>6.8</b>	<b>7.7</b>	↗
Total males / females		11.4 / 4.0	
WHO African Region	6.2	6.0	

Total alcohol per capita (15+) consumption, drinkers only (in litres of pure alcohol), 2010

Males (15+)	21.9
Females (15+)	12.7
Both sexes (15+)	18.4

Prevalence of heavy episodic drinking\* (%), 2010

	Population	Drinkers only
Males (15+)	21.2	40.6
Females (15+)	7.4	23.3
Both sexes (15+)	14.2	34.0

\*Consumed at least 60 grams or more of pure alcohol on at least one occasion in the past 30 days.

Abstainers (%), 2010

	Males	Females	Both sexes
Lifetime abstainers (15+)	31.2	58.7	45.1
Former drinkers* (15+)	16.6	9.4	13.0
Abstainers (15+), past 12 months	47.8	68.1	58.1

\*Persons who used to drink alcoholic beverages but have not done so in the past 12 months.

Patterns of drinking score, 2010

LEAST RISKY < 1 2 3 4 5 > MOST RISKY

## HEALTH CONSEQUENCES: MORTALITY AND MORBIDITY

Age-standardized death rates (ASDR) and alcohol-attributable fractions (AAF), 2012

	ASDR*		AAF (%)	
	35.1	25.0	67.4	65.1
Liver cirrhosis, males / females	40.8	29.9	19.0	6.8
Road traffic accidents, males / females				

\*Per 100 000 population (15+).

Prevalence of alcohol use disorders and alcohol dependence (%), 2010\*

	Alcohol use disorders**	Alcohol dependence
Males	9.3	3.9
Females	1.9	0.9
Both sexes	5.5	2.4
WHO African Region	3.3	1.4

\*12-month prevalence estimates (15+).

\*\*Including alcohol dependence and harmful use of alcohol.

Years of life lost (YLL) score\*, 2012

LEAST < 1 2 3 4 5 > MOST

\*Based on alcohol-attributable years of life lost.

## POLICIES AND INTERVENTIONS

Written national policy (adopted/revised) / National action plan	No / —	National maximum legal blood alcohol concentration (BAC) when driving a vehicle (general / young / professional), in %	0.08 / 0.08 / 0.00
Excise tax on beer / wine / spirits	Yes / Yes / Yes	Legally binding regulations on alcohol advertising / product placement	No / No
National legal minimum age for off-premise sales of alcoholic beverages (beer / wine / spirits)	18 / 18 / 18	Legally binding regulations on alcohol sponsorship / sales promotion	No / No
National legal minimum age for on-premise sales of alcoholic beverages (beer / wine / spirits)	18 / 18 / 18	Legally required health warning labels on alcohol advertisements / containers	Yes / No
Restrictions for on-/off-premise sales of alcoholic beverages: Hours, days / places, density	Yes, No / Yes, Yes	National government support for community action	No
Specific events / intoxicated persons / petrol stations	No / No / No	National monitoring system(s)	No