

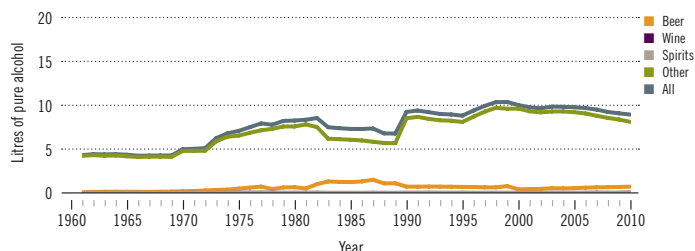
# Nigeria

Total population: 160 000 000 > Population aged 15 years and older (15+): 56% > Population in urban areas: 50% > Income group (World Bank): Lower middle income

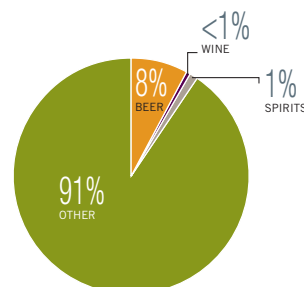
## ALCOHOL CONSUMPTION: LEVELS AND PATTERNS

### Recorded alcohol per capita (15+) consumption, 1961–2010

Data refer to litres of pure alcohol per capita (15+).



### Recorded alcohol per capita (15+) consumption (in litres of pure alcohol) by type of alcoholic beverage, 2010



### Alcohol per capita (15+) consumption (in litres of pure alcohol)

|                       | Average 2003–2005 | Average 2008–2010 | Change |
|-----------------------|-------------------|-------------------|--------|
| Recorded              | 9.8               | 9.1               | →      |
| Unrecorded            | 2.5               | 1.0               | ↘      |
| <b>Total</b>          | <b>12.3</b>       | <b>10.1</b>       | ↘      |
| Total males / females |                   | 14.9 / 5.1        |        |
| WHO African Region    | 6.2               | 6.0               |        |

### Total alcohol per capita (15+) consumption, drinkers only (in litres of pure alcohol), 2010

|                  |      |
|------------------|------|
| Males (15+)      | 25.6 |
| Females (15+)    | 17.7 |
| Both sexes (15+) | 23.1 |

### Abstainers (%), 2010

|                                  | Males | Females | Both sexes |
|----------------------------------|-------|---------|------------|
| Lifetime abstainers (15+)        | 26.1  | 52.5    | 39.2       |
| Former drinkers* (15+)           | 15.8  | 18.7    | 17.2       |
| Abstainers (15+), past 12 months | 41.9  | 71.3    | 56.4       |

\*Persons who used to drink alcoholic beverages but have not done so in the past 12 months.

### Prevalence of heavy episodic drinking\* (%), 2010

|                  | Population | Drinkers only |
|------------------|------------|---------------|
| Males (15+)      | 11.3       | 19.4          |
| Females (15+)    | 2.0        | 6.8           |
| Both sexes (15+) | 6.7        | 15.3          |

\*Consumed at least 60 grams or more of pure alcohol on at least one occasion in the past 30 days.

### Patterns of drinking score, 2010

LEAST RISKY < 1 2 3 4 5 > MOST RISKY

## HEALTH CONSEQUENCES: MORTALITY AND MORBIDITY

### Age-standardized death rates (ASDR) and alcohol-attributable fractions (AAF), 2012

|   | ASDR* |      | AAF (%) |      |
|---|-------|------|---------|------|
|   | 79.2  | 29.2 | 69.3    | 68.2 |
| Liver cirrhosis, males / females        | 55.1  | 25.8 | 12.7    | 4.4  |
| Road traffic accidents, males / females |       |      |         |      |

\*Per 100 000 population (15+).

### Prevalence of alcohol use disorders and alcohol dependence (%), 2010\*

|                    | Alcohol use disorders** | Alcohol dependence |
|--------------------|-------------------------|--------------------|
| Males              | 3.8                     | 1.0                |
| Females            | 0.4                     | <0.1               |
| Both sexes         | 2.1                     | 0.5                |
| WHO African Region | 3.3                     | 1.4                |

\*12-month prevalence estimates (15+).

\*\*Including alcohol dependence and harmful use of alcohol.

### Years of life lost (YLL) score\*, 2012

LEAST < 1 2 3 4 5 > MOST

\*Based on alcohol-attributable years of life lost.

## POLICIES AND INTERVENTIONS

|   |                                   |
|---|-----------------------------------|
| Written national policy (adopted/revised) / National action plan  | No / —                            |
| Excise tax on beer / wine / spirits   | Yes / Yes / Yes                   |
| National legal minimum age for off-premise sales of alcoholic beverages (beer / wine / spirits)   | 18 / 18 / 18                      |
| National legal minimum age for on-premise sales of alcoholic beverages (beer / wine / spirits)  | 18 / 18 / 18                      |
| Restrictions on on-/off-premise sales of alcoholic beverages:<br>Hours, days / places, density<br>Specific events / intoxicated persons / petrol stations | No, No / Yes, No<br>Yes / No / No |

|  |                    |
|--|--------------------|
| National maximum legal blood alcohol concentration (BAC) when driving a vehicle (general / young / professional), in % | 0.05 / 0.05 / 0.05 |
| Legally binding regulations on alcohol advertising / product placement   | Yes / Yes          |
| Legally binding regulations on alcohol sponsorship / sales promotion   | No / No            |
| Legally required health warning labels on alcohol advertisements / containers  | No / No            |
| National government support for community action   | Yes                |
| National monitoring system(s)  | No                 |