

Leishmaniasis

INDIA

2014

Published in July 2016

Country General Information (WHO, 2013)

Total population:	1,252,140,000	Age group <15/>14 years, %:	29% / 71%
Gender (% F/M):	48.5% / 51.5%	Life expectancy at birth in years (F/M):	65 / 68
GDP (PPP int \$):	5350	Number of 3rd sub-national administrative level divisions, name:	6612, ^a Block
Income status:	Lower middle	^a https://data.gov.in/catalog/number-districts-drdas-blocks-villages-country#web_catalog_tabs_block_10	

Epidemiology

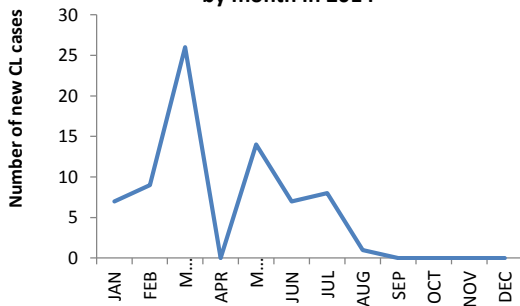
	VL	CL	PKDL	MCL
Endemicity status:	Endemic	Endemic	Endemic	Non-endemic
Number of new cases (incidence):	9241	72	421	N/A
Number of relapse cases:	No data	No data	N/A	N/A
Total number of cases:	9241	72	421	N/A
Imported cases (n, %):	0 0%	No data	No data	No data
Gender distribution (% F):	No data	No data	No data	N/A
Age group distribution (% <5/5-14/>14):	No data	No data	No data	N/A
Incidence rate (cases/10 000 population in endemic areas):	0.71	No data	N/A	N/A
Number of endemic 3rd sub-national administrative level divisions (n):	611	No data	N/A	N/A
Population at risk ¹ (% n/total):	10% (130724239/1252140000)	No data	N/A	N/A
Was there any outbreak?	No	Unknown	N/A	N/A
Number of new ² foci:	0	0	N/A	N/A

N/A = not applicable VL = visceral leishmaniasis CL = cutaneous leishmaniasis PKDL = post-kala-azar dermal leishmaniasis MCL = mucocutaneous leishmaniasis

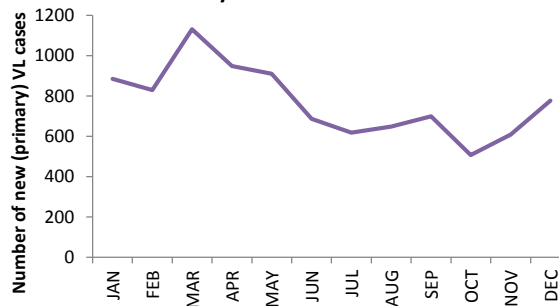
Monthly distribution of new cases January-December

2014	JAN	FEB	MAR	APR	MAY	JUN	JUL	AUG	SEP	OCT	NOV	DEC
VL	884	828	1131	948	910	685	618	647	698	507	608	777
CL	7	9	26	0	14	7	8	1	0	0	0	0

Number of new CL cases reported by month in 2014

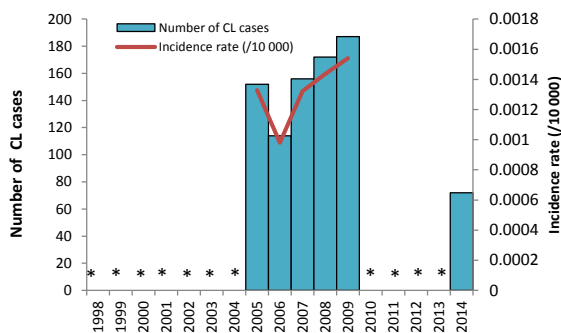


Number of new (primary) VL cases reported by month in 2014

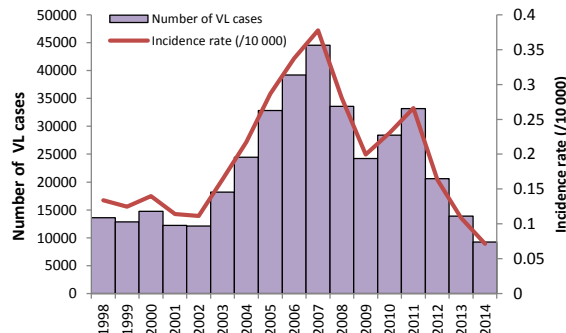


Incidence rate/10 000 population and number of new CL (left) and new (primary) VL (right) cases from 1998 to

Number of cases and incidence rate³ of CL



Number of cases and incidence rate³ of VL



¹ Defined as "Number of people living in 3rd sub-national administrative level endemic areas"

² * Data not available

² For this reporting period, an area at the 3rd sub-national administrative level reporting cases for the first time ever

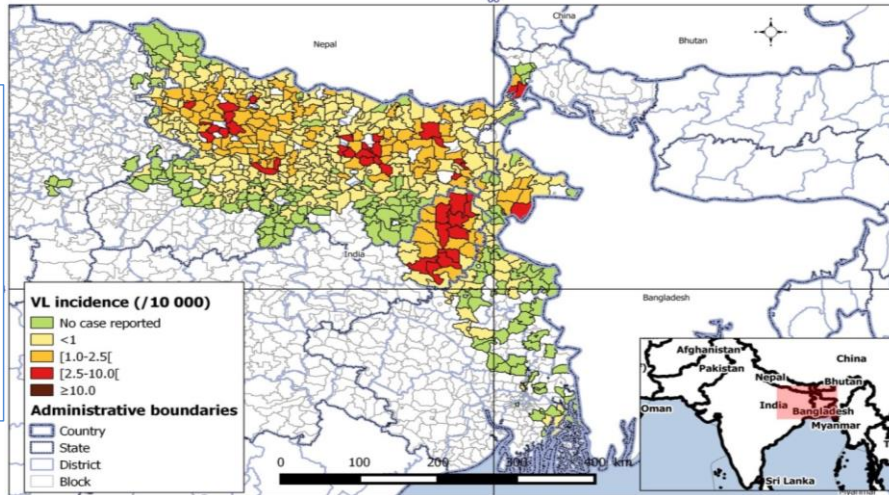
³ Incidence rate at national level

Distribution of new CL (left) and new (primary) VL (right) cases

No data under national level for CL

Incidence of VL in India in 2014 at block level per 10 000 population

The boundaries and names shown and the designations used on this map do not imply the expression of any opinion whatsoever on the part of the World Health Organization concerning the legal status of any country, territory, city or area or of its authorities, or concerning the delimitation of its frontiers or boundaries. Dotted and dashed lines on maps represent approximate border lines for which there may not yet be full agreement.
Map production:
WHO/HTM/NTD/IDM



Control and surveillance

Year Leishmaniasis National Control Programme (LNCP) was established:	1992	Year latest national guidelines were published:	2015
Type of surveillance:	Vertical	Is leishmaniasis a notifiable disease (mandatory reporting)?	Yes
Is there a vector control programme?	Yes	Is there a reservoir host control programme?	Yes
Type of insecticide used for IRS:	DDT and synthetic pyrethroids	Number of leishmaniasis health facilities:	611

Diagnosis

	VL	CL	PKDL	MCL
Number of people screened actively for:	No data	No data	No data	N/A
Number of people screened passively for:	No data	No data	No data	N/A
VL cases diagnosed by RDT* (%, # RDT+/total VL cases):	No data	N/A	N/A	N/A
Proportion of positive RDT* (%, # RDT+/total RDT):	No data	N/A	N/A	N/A
Cases diagnosed by direct exam (parasitology) (%, # slides +/total cases):	No data	No data	N/A	N/A
Proportion of positive slides (%, # slides +/total slides):	No data	No data	N/A	N/A
Cases diagnosed clinically (%, # clinical cases/total cases):	No data	N/A	N/A	N/A
Percentage of cases with HIV-VL coinfection:	No data	N/A	No data	N/A

* These indicators apply only for new (primary) VL cases
 VL = visceral leishmaniasis CL = cutaneous leishmaniasis PKDL = post-kala-azar dermal leishmaniasis
 N/A = not applicable RDT = rapid diagnostic test HIV = human immunodeficiency virus MCL = mucocutaneous leishmaniasis

Treatment and medicines

Is treatment provided free of charge in the public sector?	Yes
Antileishmanial medicines included in the national List of Essential Medicines:	Liposomal amphotericin B, amphotericin B deoxycholate, miltefosine, sodium stibogluconate (SSG)

TREATMENT OUTCOME	VL
Proportion of relapse cases: ⁴	No data
Initial cure rate:	No data
Failure ⁵ rate:	No data
Case-fatality rate:	0.1% (11/9241)

⁴ A relapse case in this country is defined as: No definition available

⁵ A failure case in this country is defined as: No definition available