

Tuberculosis profile: Paraguay

Population 2019: 7 million

Estimates of TB burden*, 2019

	Number	(Rate per 100 000 population)
Total TB incidence	3 300 (2 800-3 800)	46 (40-53)
HIV-positive TB incidence	270 (220-330)	3.8 (3.1-4.6)
MDR/RR-TB incidence**	76 (25-150)	1.1 (0.36-2.2)
HIV-negative TB mortality	270 (230-320)	3.9 (3.2-4.6)
HIV-positive TB mortality	43 (30-59)	0.61 (0.43-0.84)

Estimated proportion of TB cases with MDR/RR-TB*, 2019

New cases	0.9% (0.08-2.7)
Previously treated cases	15% (5.6-27)

Universal health coverage and social protection*

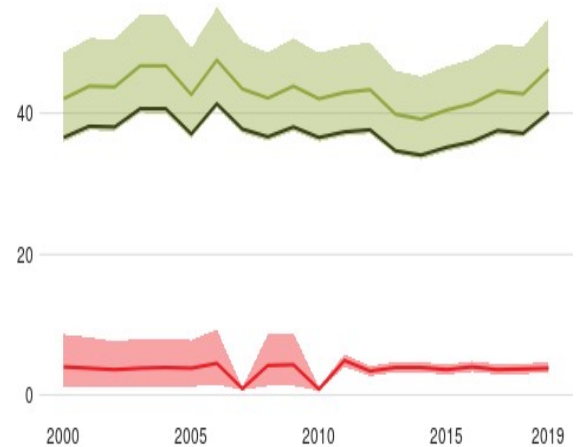
TB treatment coverage (notified/estimated incidence), 2019	87% (75-100)
TB patients facing catastrophic total costs	
TB case fatality ratio (estimated mortality/estimated incidence), 2019	10% (8-12)

TB case notifications, 2019

Total new and relapse	2 834
- % tested with rapid diagnostics at time of diagnosis	20%
- % with known HIV status	85%
- % pulmonary	89%
- % bacteriologically confirmed ^	76%
- % children aged 0-14 years	7%

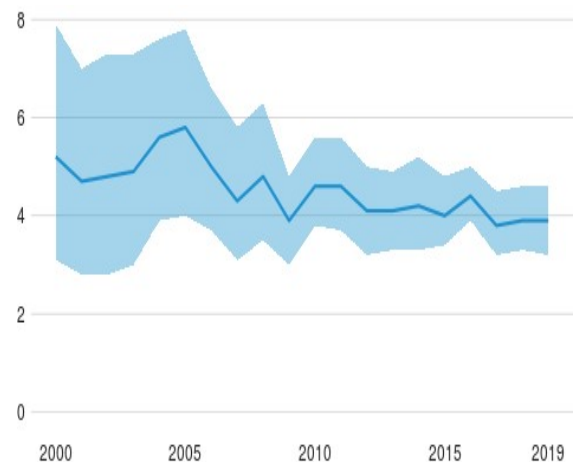
Incidence, New and relapse TB cases notified, HIV-positive TB incidence

(Rate per 100 000 population per year)



HIV-negative TB mortality

(Rate per 100 000 population per year)



Incidence, Notified cases by age group and sex, 2019

(Number)

- % women	27%
- % men	66%
Total cases notified	3 097

TB/HIV care in new and relapse TB patients, 2019

	Number	(%)
Patients with known HIV status who are HIV-positive	200	8.3%
- on antiretroviral therapy	200	100%

Drug-resistant TB care, 2019

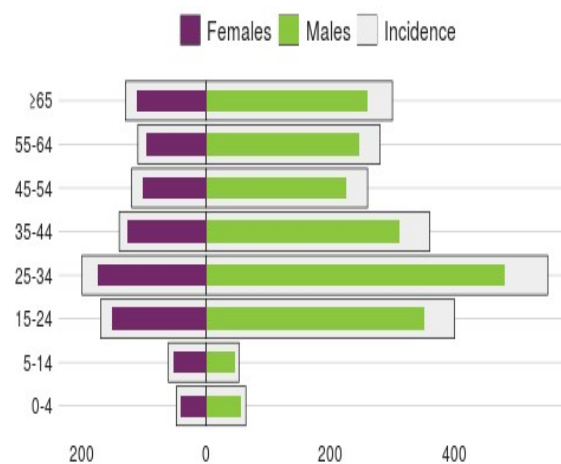
% of bacteriologically confirmed TB cases tested for rifampicin resistance - New cases ^	47%
% of bacteriologically confirmed TB cases tested for rifampicin resistance - Previously treated cases ^	72%
Laboratory-confirmed cases - MDR/RR-TB ^^	9
Patients started on treatment - MDR/RR-TB ^^	14
Laboratory-confirmed cases - XDR-TB ^^	0
Patients started on treatment - XDR-TB ^^	0
MDR/RR-TB cases tested for resistance to any fluoroquinolone	6

Treatment success rate and cohort size

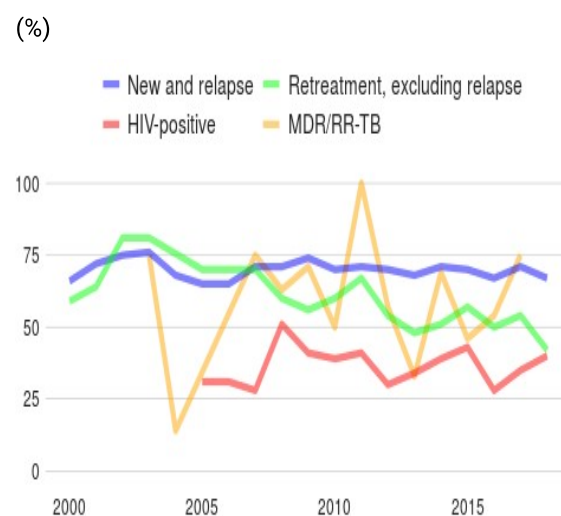
	Success	Cohort
New and relapse cases registered in 2018	67%	2 559
Previously treated cases, excluding relapse, registered in 2018	42%	219
HIV-positive TB cases registered in 2018	40%	194
MDR/RR-TB cases started on second-line treatment in 2017	75%	8
XDR-TB cases started on second-line treatment in 2017		0

TB preventive treatment, 2019

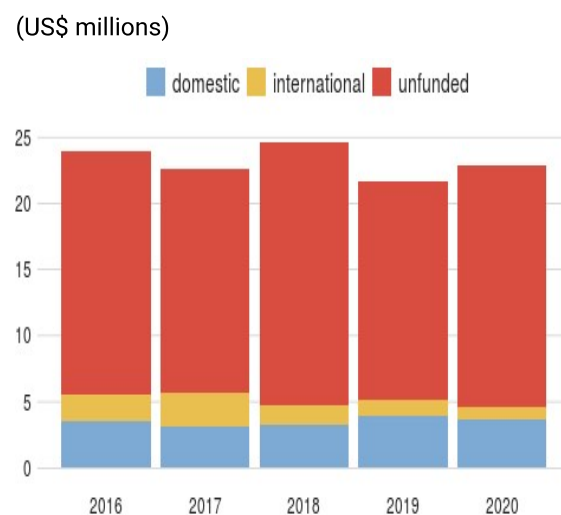
% of HIV-positive people (newly enrolled in care) on preventive treatment	5.4%
---	------



Treatment success rate



Total budget



% of children (aged < 5) household contacts of bacteriologically-confirmed TB cases on preventive treatment	27% (24-29)
---	----------------

TB financing

National TB budget, 2020 (US\$ millions)	23
- Funding source, domestic	16%
- Funding source, international	4.4%
- unfunded	80%

* Estimates of TB and MDR-TB burden are produced by WHO in consultation with countries. Ranges represent uncertainty intervals.

** MDR is TB resistant to rifampicin and isoniazid; RR is TB resistant to rifampicin

^ Calculated for pulmonary cases only

^^ Includes cases with unknown previous TB treatment history

^^^ Includes patients diagnosed before 2019 and patients who were not laboratory-confirmed

Generated 2020-10-15 by the World Health Organization (<https://www.who.int/tb/data/>)