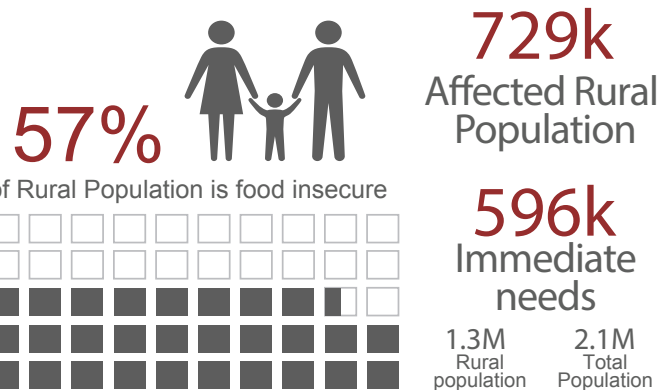


NAMIBIA

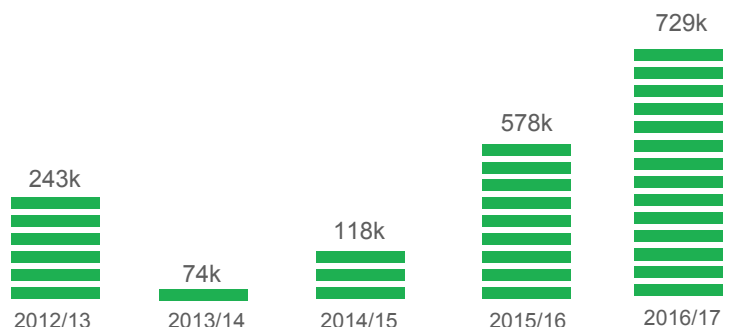
Vulnerability Assessment Committee Results 2016



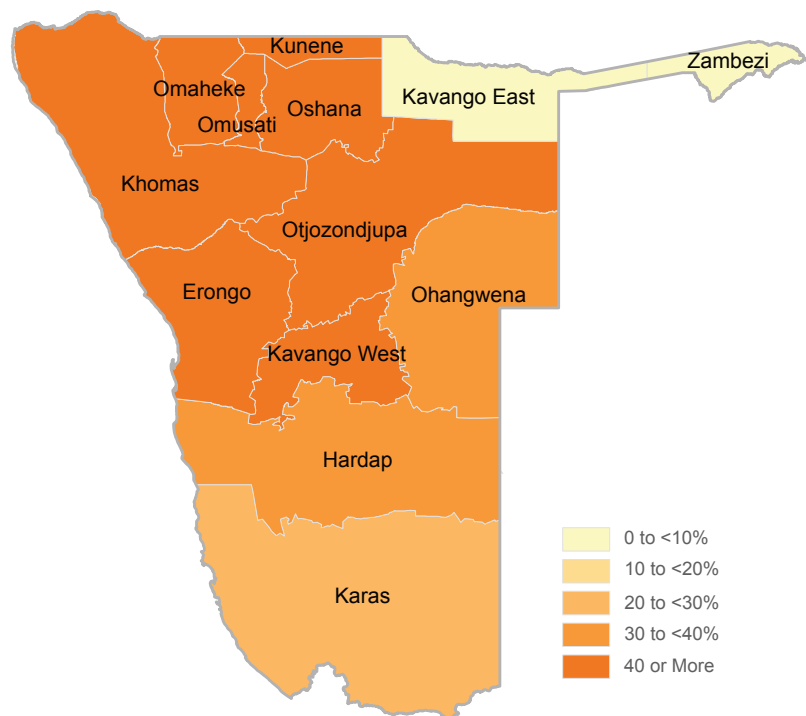
Country Overview



Food Insecure Population by Year



Population in Need of Emergency Assistance (%)



Map Footnotes
 All Countries: The numbers of population in need of emergency assistance are based on projections of the situation during the peak of the lean season between May/2016 and Mar/2017 and could change (either way) as the lean season progress and assumptions are revised.

Regional Socio - Economic Context

Life expectancy	53.3 years
Population Growth Rate	3.0%
Human Development Index	0.492 (2013)
Adult Literacy	83.6% (2012)
Employment Rate	76.4% (2013)
Average GDP Growth	4.78% (2013)
Under 5 Mortality Rate	89 per 1,000 live births
Inflation	6.6%
HIV and AIDS	14.0%

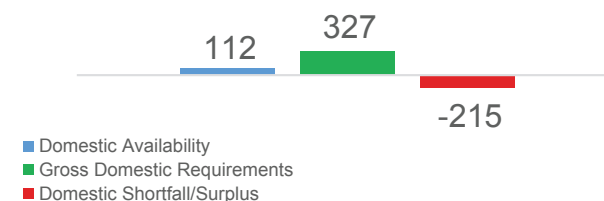
People Targeted by Sector



Key Humanitarian Needs

- Food provision to 595,839 beneficiaries.
- Water provision, livestock marketing incentives, subsidy on crop production inputs are amongst the planned interventions

Cereal Balance (000 MT)



Overview

The vulnerability assessment and analysis indicates that the drought has impacted not only on food security but also other sectors such as water, health & nutrition and livestock amongst others. Meanwhile the Government is implementing interim food assistance to 595,839 beneficiaries from May to July 2016 while a comprehensive drought programme is envisaged to start from August to March 2016

Interventions to be implemented include livestock marketing incentives, subsidies for ploughing services, free seeds distribution, drilling and rehabilitation of boreholes, laying of water.

Malnutrition Rates (%)

