

Tuberculosis profile: Botswana

Population 2019: 2.3 million

Estimates of TB burden*, 2019

	Number	(Rate per 100 000 population)
Total TB incidence	5 800 (4 500-7 300)	253 (195-317)
HIV-positive TB incidence	2 800 (2 200-3 600)	123 (95-155)
MDR/RR-TB incidence**	270 (170-410)	12 (7.2-18)
HIV-negative TB mortality	650 (430-910)	28 (19-39)
HIV-positive TB mortality	1 100 (830-1 500)	49 (36-65)

Estimated proportion of TB cases with MDR/RR-TB*, 2019

New cases	3.6% (2.5-4.9)
Previously treated cases	13% (7.9-20)

Universal health coverage and social protection*

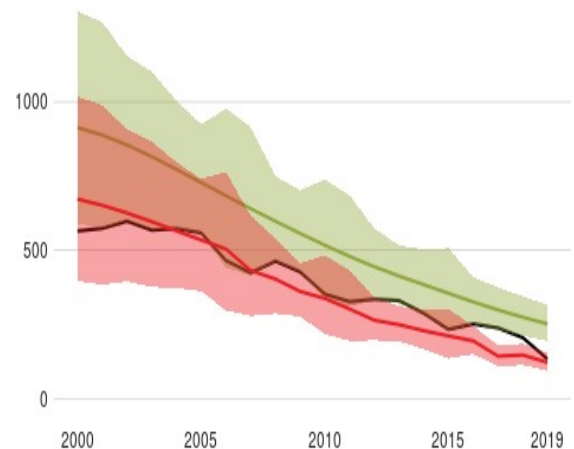
TB treatment coverage (notified/estimated incidence), 2019	53% (42-69)
TB patients facing catastrophic total costs	
TB case fatality ratio (estimated mortality/estimated incidence), 2019	31% (21-42)

TB case notifications, 2019

Total new and relapse	3 089
- % tested with rapid diagnostics at time of diagnosis	17%
- % with known HIV status	86%
- % pulmonary	84%
- % bacteriologically confirmed ^	22%
- % children aged 0-14 years	8%

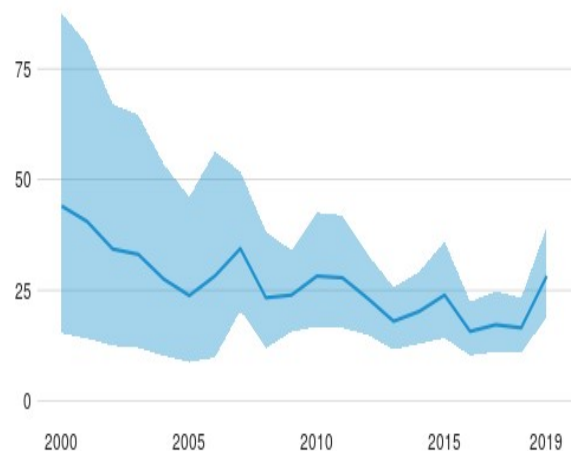
Incidence, New and relapse TB cases notified, HIV-positive TB incidence

(Rate per 100 000 population per year)



HIV-negative TB mortality

(Rate per 100 000 population per year)



Incidence, Notified cases by age group and sex, 2019

(Number)

- % women	37%
- % men	55%
Total cases notified	3 121

TB/HIV care in new and relapse TB patients, 2019

	Number	(%)
Patients with known HIV status who are HIV-positive	1 296	49%
- on antiretroviral therapy	1 191	92%

Drug-resistant TB care, 2019

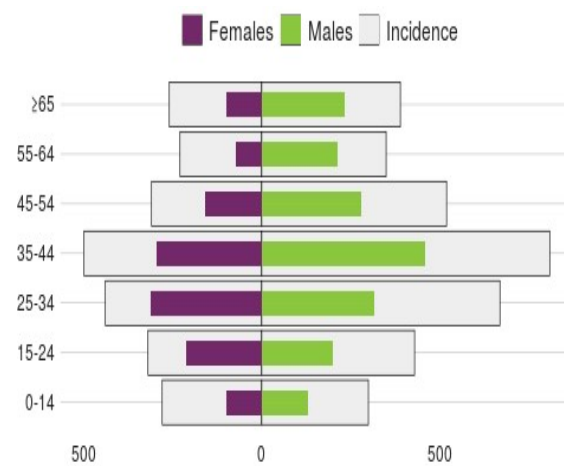
% of bacteriologically confirmed TB cases tested for rifampicin resistance - New cases ^	29%
% of bacteriologically confirmed TB cases tested for rifampicin resistance - Previously treated cases ^	>100%
Laboratory-confirmed cases - MDR/RR-TB ^^	53
Patients started on treatment - MDR/RR-TB ^^	53
Laboratory-confirmed cases - XDR-TB ^^	0
Patients started on treatment - XDR-TB ^^	0
MDR/RR-TB cases tested for resistance to any fluoroquinolone	

Treatment success rate and cohort size

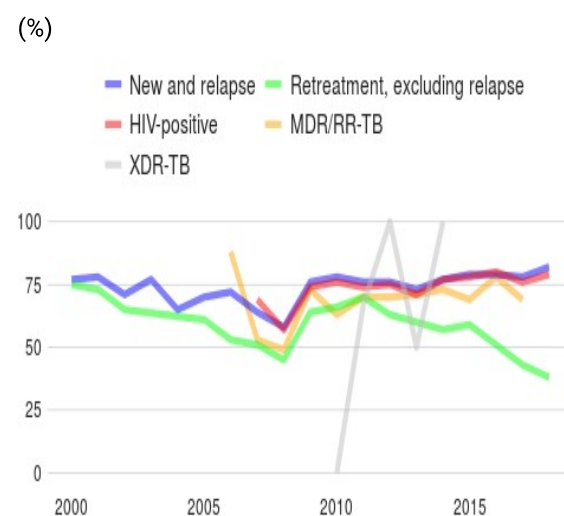
	Success	Cohort
New and relapse cases registered in 2018	82%	4 844
Previously treated cases, excluding relapse, registered in 2018	38%	79
HIV-positive TB cases registered in 2018	79%	2 043
MDR/RR-TB cases started on second-line treatment in 2017	69%	87
XDR-TB cases started on second-line treatment in 2017		0

TB preventive treatment, 2019

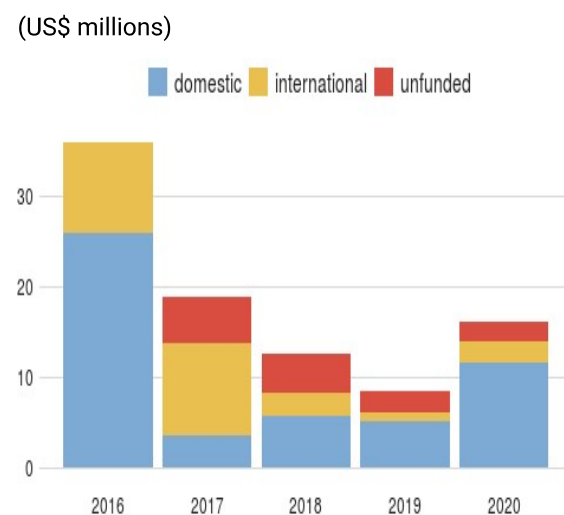
% of HIV-positive people (newly enrolled in care) on preventive treatment	
---	--



Treatment success rate



Total budget



% of children (aged < 5) household contacts of bacteriologically-confirmed TB cases on preventive treatment	100% (100-100)
---	-------------------

TB financing

National TB budget, 2020 (US\$ millions)	16
- Funding source, domestic	71%
- Funding source, international	15%
- unfunded	13%

* *Estimates of TB and MDR-TB burden are produced by WHO in consultation with countries. Ranges represent uncertainty intervals.*

** *MDR is TB resistant to rifampicin and isoniazid; RR is TB resistant to rifampicin*

^ *Calculated for pulmonary cases only*

^^ *Includes cases with unknown previous TB treatment history*

^^^ *Includes patients diagnosed before 2019 and patients who were not laboratory-confirmed*

Generated 2020-10-15 by the World Health Organization (<https://www.who.int/tb/data/>)