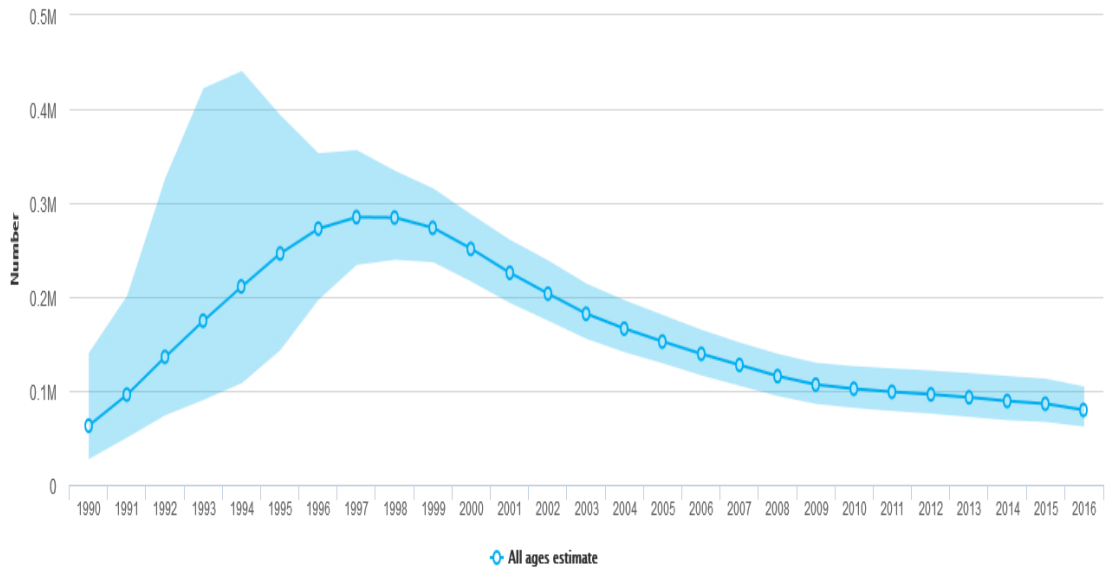
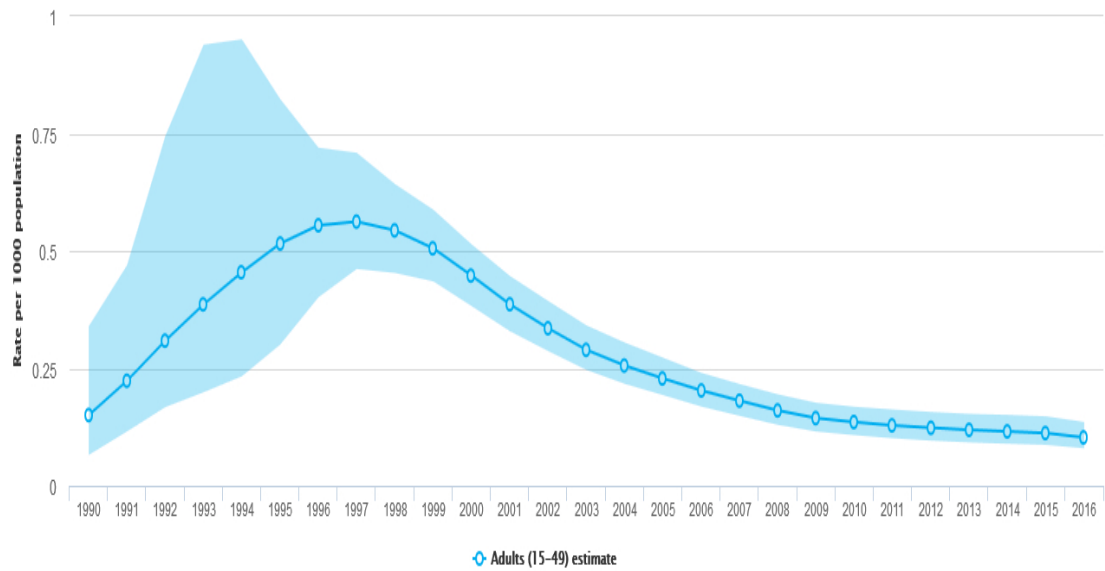


New HIV Infections

1. New HIV infections (all ages)

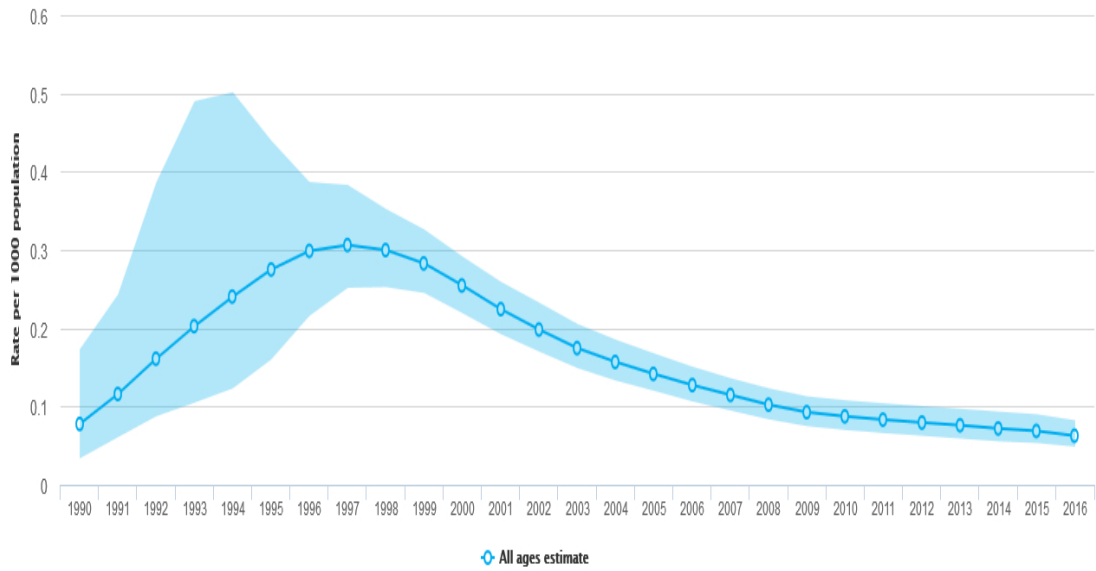


2. HIV incidence per 1000 population (15-49)

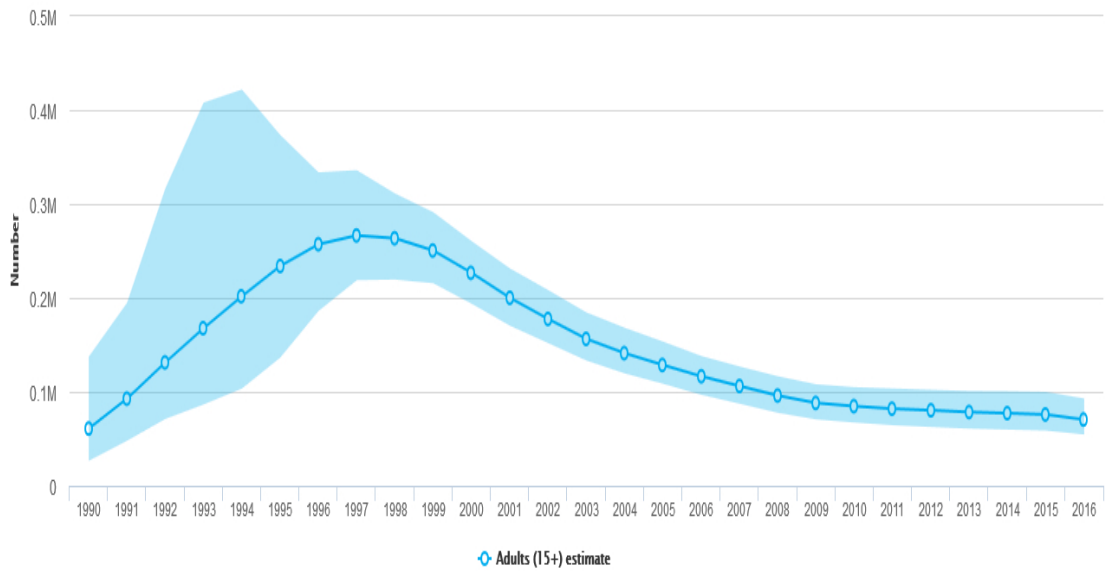


New HIV Infections

3. HIV incidence per 1000 population (all ages)

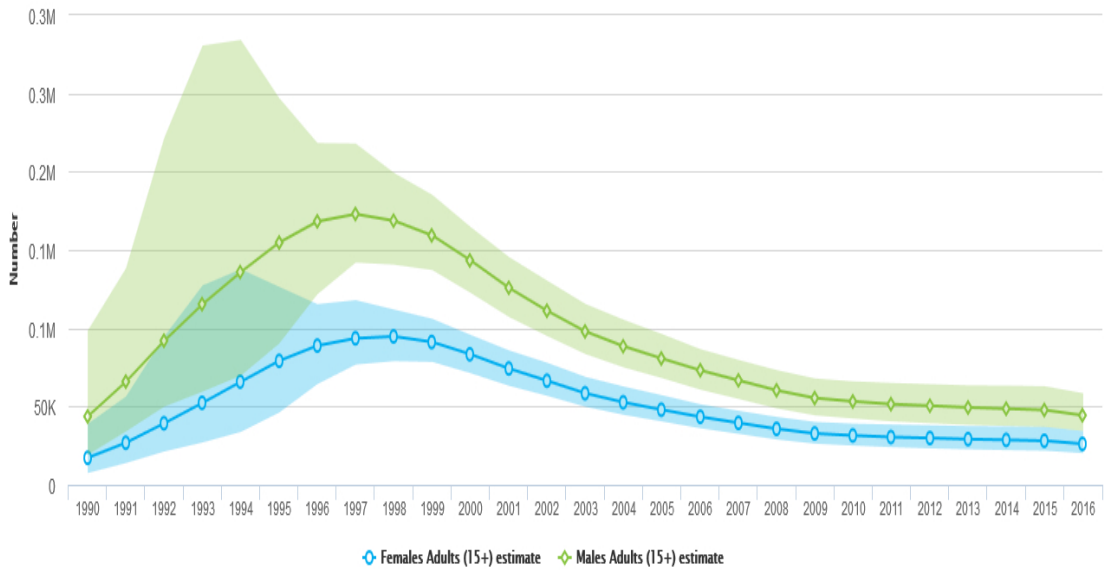


4. New HIV Infections among adults (15+)

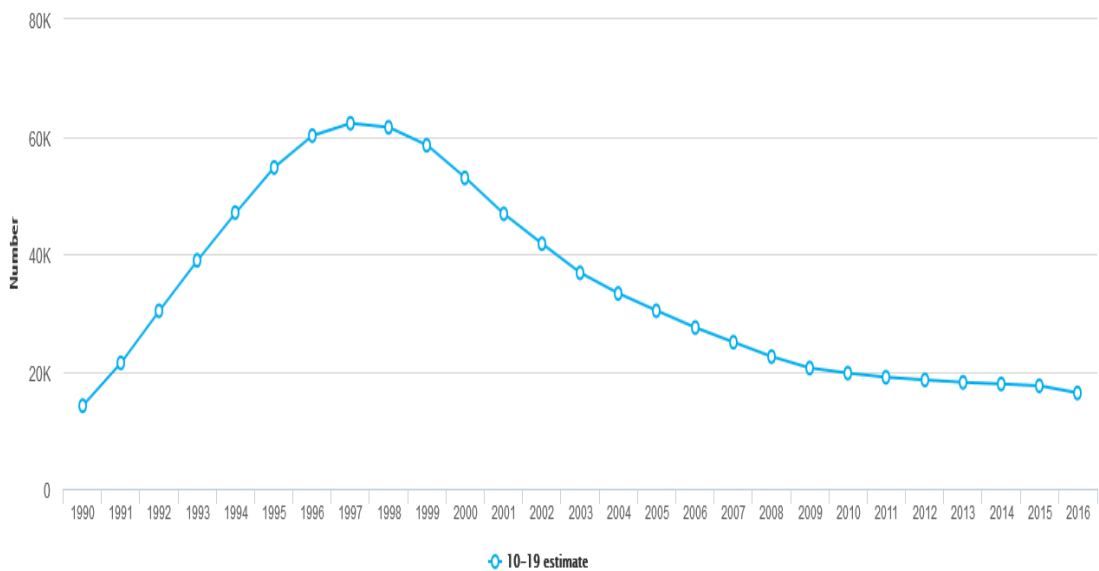


New HIV Infections

5. New HIV Infections among adults (15+) - by sex

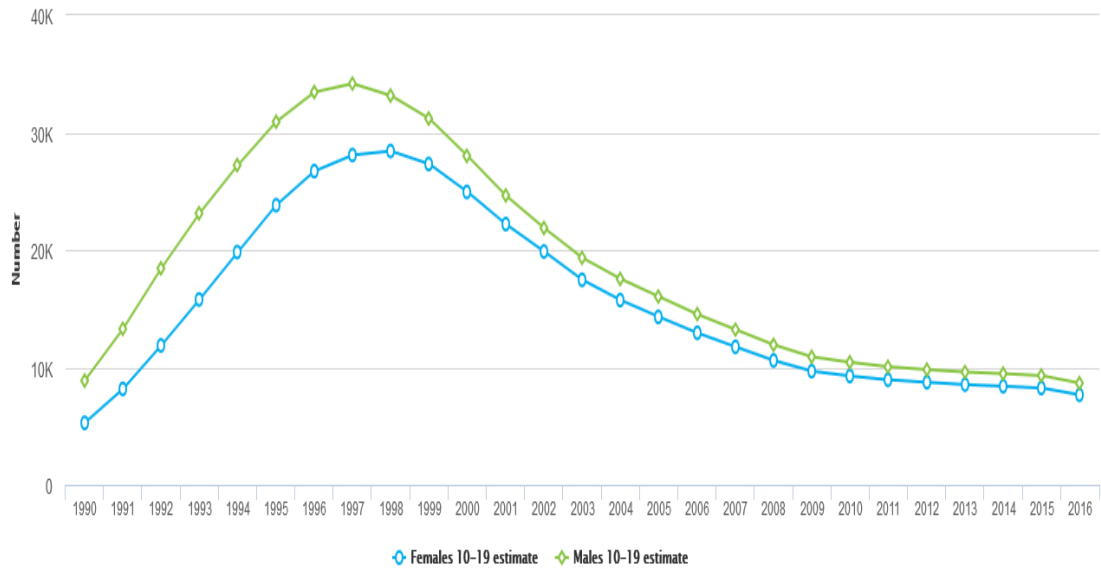


6. New HIV infections among adolescents (10-19)

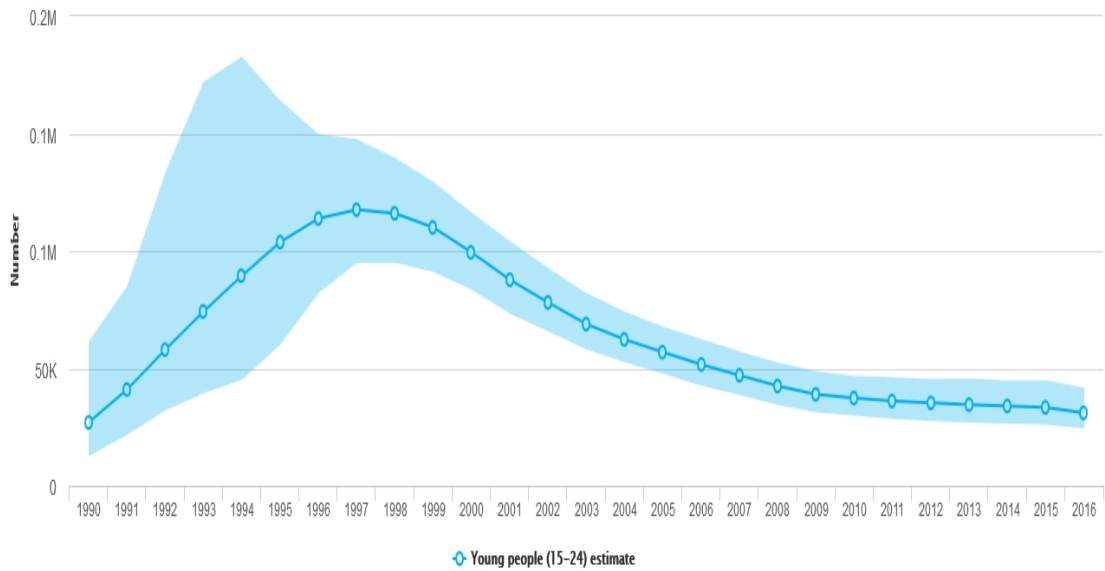


New HIV Infections

7. New HIV infections among adolescents (10-19) - by sex



8. New HIV infections among young people (15-24)



New HIV Infections

9. New HIV infections among young people (15-24) - by sex

