

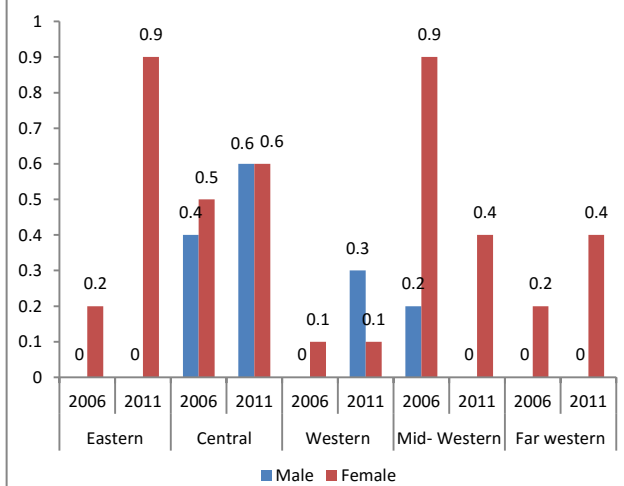


Factsheet 4: Management of Sexually Transmitted Infections (STIs), as of Asar 2073 (July 2016)

Background about STIs in Nepal

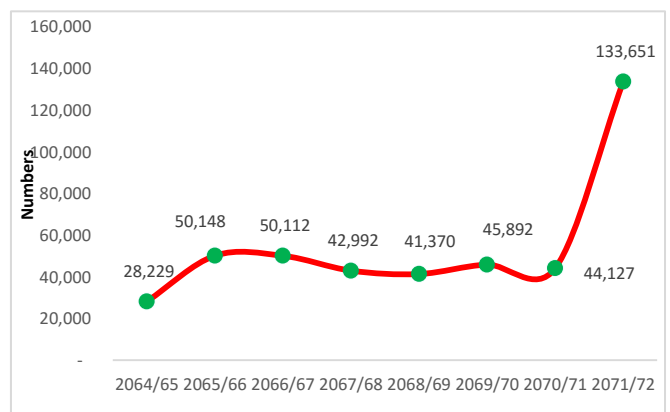
- ✎ Key interventions for management of STI in Nepal are targeted Behavior Change Communication (BCC), condom promotion and distribution, diagnosis and treatment of STIs (both syndromic and etiological management) and referral services.
- ✎ STI management services are available from Government Health Facilities and NGOs for key population.
- ✎ Nepal has been following WHO recommended approach for the management of STIs in patients with recognized signs and symptoms.
- ✎ The first National STI Case Management Guideline was developed in 1995 and revised in 2014.
- ✎ Repeated Integrated Biological and Behavioral Surveillance (IBBS) Surveys are the main source of information for STI prevalence among key population in Nepal.

Table 1: Self-reported STIs cases



Source: Nepal Demographic Health Survey (NDHS) 2006 & 2011

Figure 1: Annual Reported Cases of STIs through HMIS reporting



Source: Annual Report, Department of Health Services (DoHS) FY 071/72

For Further Information Please Contact:

National Centre for AIDS and STD Control, Teku, Kathmandu

Phone: +977 - 1 - 4258219, 4261653, 4262753,

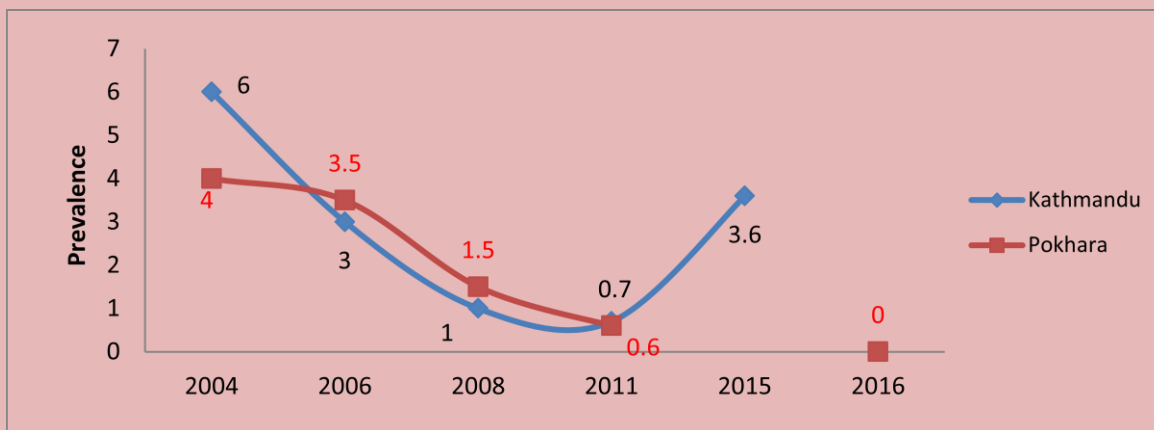
Fax: +977 - 1 - 4215 149

Email: data@ncasc.gov.np

Website: www.ncasc.gov.np

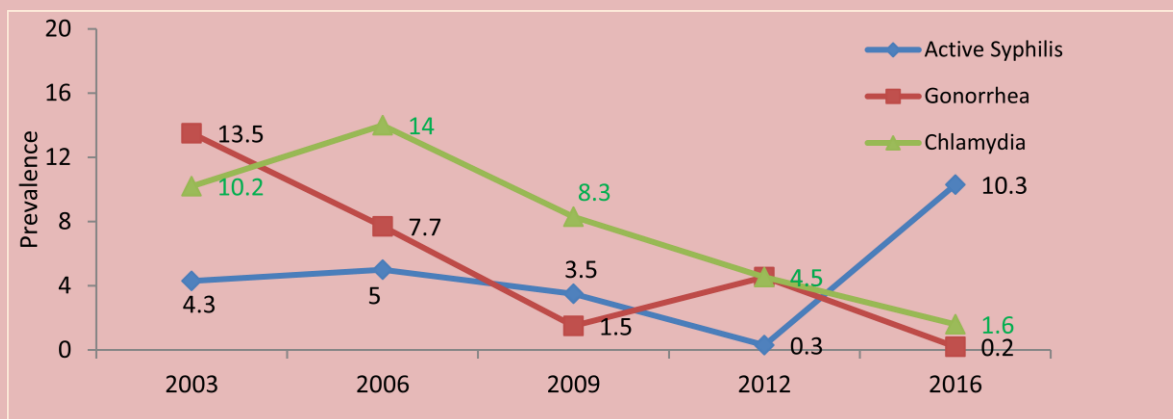


Figure 2: Prevalence of Active Syphilis among Female Sex Workers



Source: Integrated Bio-Behavioural Surveillance (IBBS) Survey

Figure 3: Prevalence of STI among Female Sex Workers in 22 Terai Highway Districts



Source: Integrated Bio-Behavioural Surveillance (IBBS) Survey

For Further Information Please Contact:

National Centre for AIDS and STD Control, Teku, Kathmandu

Phone: +977 - 1 - 4258219, 4261653, 4262753,

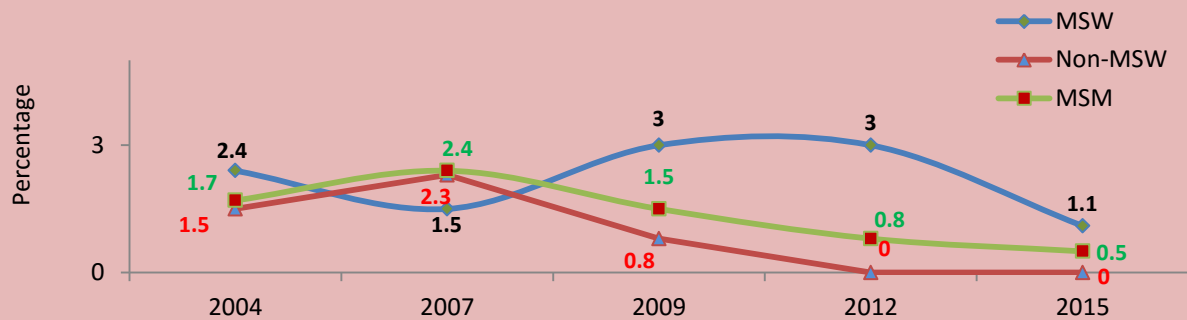
Fax: +977 - 1 - 4215 149

Email: data@ncasc.gov.np

Website: www.ncasc.gov.np

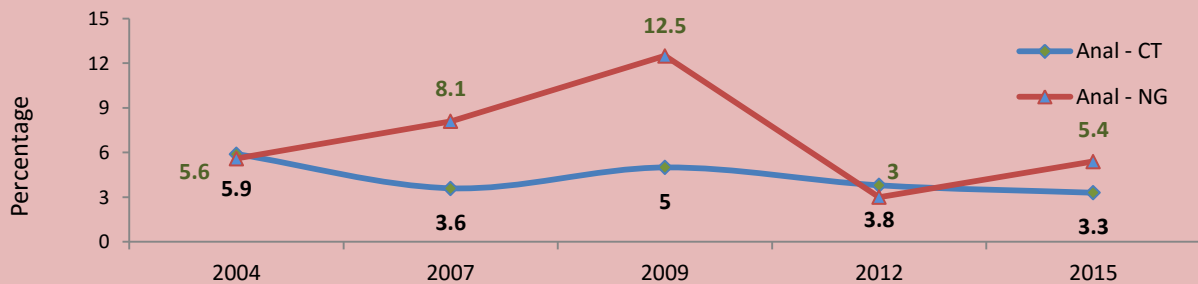


Figure 4: Prevalence of Active Syphilis among Men who have Sex with Men / Transgender in Kathmandu Valley



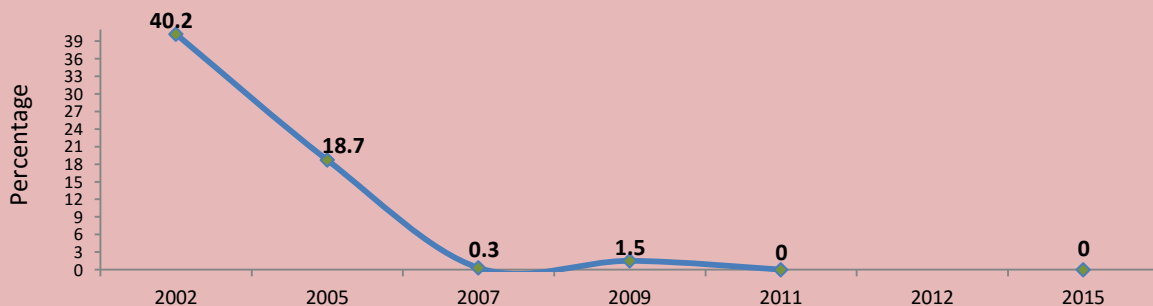
Source: Integrated Bio-Behavioural Surveillance (IBBS) Survey
MSW: Male Sex Workers, Non- MSW: Non Male Sex Workers, MSM: Men who have sex with Men

Figure 5: Prevalence of STI among Men who have Sex with Men / Transgender in Kathmandu Valley



Source: Integrated Bio-Behavioural Surveillance (IBBS) Survey
CT: Chlamydia Trochomatis ; NG: Neisseria Gonorrhoea

Figure 6: Prevalence of Active Syphilis among People who inject drugs in Kathmandu Valley



For Further Information Please Contact:

National Centre for AIDS and STD Control, Teku, Kathmandu

Phone: +977 - 1 - 4258219, 4261653, 4262753,

Fax: +977 - 1 - 4215 149

Email: data@ncasc.gov.np

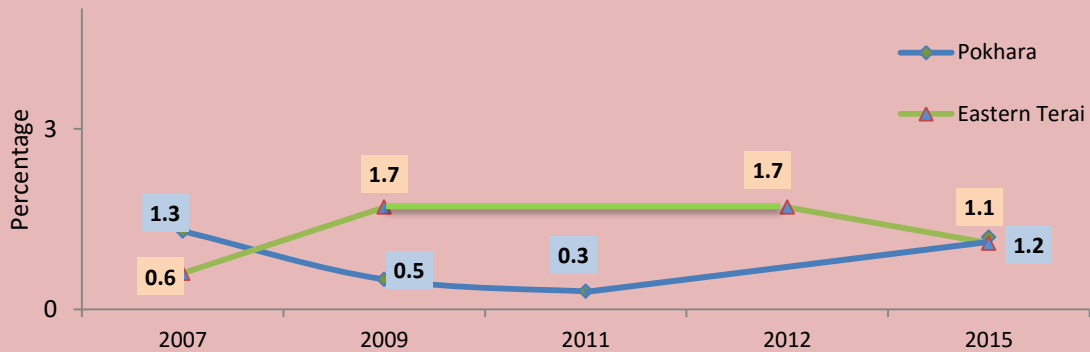
Website: www.ncasc.gov.np



Government of Nepal
 Ministry of Health
National Centre for AIDS and STD Control
 Teku, Kathmandu



Figure 7: Prevalence of Active Syphilis among People who Inject Drugs



Source: Integrated Bio-Behavioural Surveillance (IBBS) Survey

SN	Survey Populations	Study Area	Prevalence of Syphilis
1	Female Injecting Drug Users	Kathmandu Valley (2016)	7.5
2	Men who have Sex with Men / Transgender	Terai Highway Districts (2016)	9.4
3	Truckers	Terai Highway Districts (2016)	0.3

Source: Integrated Bio-Behavioural Surveillance (IBBS) Survey

For Further Information Please Contact:

National Centre for AIDS and STD Control, Teku, Kathmandu

Phone: +977 - 1 - 4258219, 4261653, 4262753,

Fax: +977 - 1 - 4215 149

Email: data@ncasc.gov.np

Website: www.ncasc.gov.np