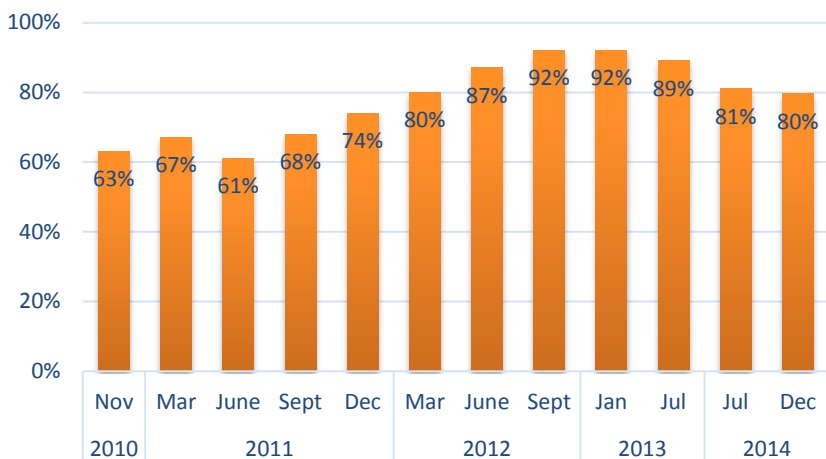


Progress of selected Government Hospitals in achieving Comprehensive Emergency Obstetric & Neonatal Care (CEmONC) status, December 2014

The Facility Improvement Team (FIT) assessments score selected health facilities, including Government Hospitals, on their readiness to provide quality EmONC based on whether they meet certain criteria for each of seven enablers ranging from water and sanitation to essential drugs. See over page for the details of these criteria. The criteria for a hospital is different to a CHC. This is because of variations in their capacity to perform certain procedures. Each facility is scored using the same traffic light colour system for each enabler as described on the score card for CEmONCs.

Performance rating	Score	Facility has:
	Green 4	Met all criteria
	Yellow 3	Mostly met criteria
	Orange 2	Partially met criteria
	Red 1	Not met criteria



Each facility is given an overall score. The image to the left shows the progress for all hospitals since the FIT assessments started. The rating is based on the total scores of all enablers of the hospitals and expressed as a percentage.

See below for more details of how each hospital performed for each enabler using the traffic light rating and how each hospital ranked among all the hospitals assessed under the FIT.








For more details, contact Dr. Santigie Sesay, Director, Reproductive & Child Health, MoHS Sierra Leone; sanniesay@gmail.com

FACILITY PERFORMANCE AGAINST ENABLERS



Hospital	Ranking
Pujehun Govt. Hospital	1 st
Kabala Govt. Hospital	2 nd
Kenema Govt. Hospital	2 nd
Koidu Govt. Hospital	2 nd
Magburaka Govt. Hospital	5 th
Makeni Govt. Hospital	5 th
PCMH Govt. Hospital	5 th
Moyamba Govt. Hospital	8 th
Kailahun Govt. Hospital	9 th
Kambia Govt. Hospital	9 th
Bo Govt. Hospital	11 th
Bonthe Govt. Hospital	12 th

Hospital	Water & Sanitation	Electricity	Referrals	Equipment	Blood & Laboratory	Staffing	Drugs
Pujehun Govt. Hospital	Green	Green	Green	Yellow	Green	Green	Yellow
Kabala Govt. Hospital	Green	Green	Green	Yellow	Yellow	Yellow	Green
Kenema Govt. Hospital	Green	Green	Green	Orange	Green	Green	Yellow
Koidu Govt. Hospital	Green	Green	Green	Orange	Yellow	Green	Green
Magburaka Govt. Hospital	Green	Yellow	Green	Yellow	Green	Green	Orange
Makeni Govt. Hospital	Yellow	Green	Green	Yellow	Yellow	Green	Yellow
PCMH Govt. Hospital	Green	Green	Yellow	Orange	Green	Green	Yellow
Moyamba Govt. Hospital	Green	Yellow	Green	Orange	Orange	Green	Yellow
Kailahun Govt. Hospital	Yellow	Orange	Green	Orange	Green	Yellow	Yellow
Kambia Govt. Hospital	Green	Green	Green	Red	Yellow	Yellow	Red
Bo Govt. Hospital	Orange	Red	Yellow	Orange	Yellow	Green	Yellow
Bonthe Govt. Hospital	Yellow	Green	Red	Orange	Red	Orange	Yellow

ENABLER	CRITERIA TO ACHIEVE GREEN STATUS FOR HOSPITALS
 <p>Water & Sanitation</p>	<p>Water supply needs to be:</p> <ul style="list-style-type: none"> • Safe (i.e. drinkable) • Piped and available in labour room, theatre toilet • Available 24 hours a day • Effectively drained from the facility • Functional hand washing facilities available in the labour ward, theatre & toilet <p>Waste disposal:</p> <ul style="list-style-type: none"> • Incinerator available • Waste bins for dry and wet waste with cover • Functional autoclave
 <p>Electricity</p>	<p>Main source: Solar, Generator or Central Power that is available 24 hours daily, when needed</p> <p>Second source: available in labour room and operating theatre (minimum)</p>
 <p>Referrals</p>	<p>Transportation:</p> <ul style="list-style-type: none"> • Availability of functional Ambulance 24 hours daily • Response time to PHU and back within 3 hours. • Dedicated medical personnel to accompany ambulance <p>Communication:</p> <ul style="list-style-type: none"> • Communications with cellular phone or VHF radio • 24 hour availability of communication
 <p>Equipment for special procedures</p>	<p>Availability of functional equipment for the following procedures :</p> <ul style="list-style-type: none"> • Assisted vaginal delivery • Manual removal of placenta • Resuscitation • Caesarean section • Blood Transfusion • Routine care • Removal of retained product of conception.
 <p>Blood storage & handling & laboratory</p>	<p>Facility needs to have:</p> <ul style="list-style-type: none"> • 24 hour powered blood bank (central power, generator, solar) • Blood present in the blood bank and / or no stock out for the past three months • Full laboratory service • Trained Lab Technician available 24 hours daily.
 <p>Staffing</p>	<p>Staff to include at least:</p> <ul style="list-style-type: none"> • 2 Doctors able to perform caesarean section (operative delivery) • 4 Midwives • 10 SRN/ SECHN • 2 Pharmacist / Technician / Assistant • 2 Lab Technician • 1 Nurse Anaesthetist • 5 Porters and/or Cleaners • 2 Ambulance drivers <p>Plus</p> <p>Staff able to perform all procedures: manual vacuum extraction, removal of placenta, removal of products of conception, resuscitation.</p>
 <p>Drugs</p>	<p>At least a Three month supply of:</p> <ul style="list-style-type: none"> • All 16 tracer drugs plus IV/IM ampicillin, gentamycin and calcium gluconate; • At least three months' supply of all Tracer consumables (e.g. syringes, cannulae, gloves, sutures) • Appropriate Storage facilities: separate room, cold room, off-ground, locked.