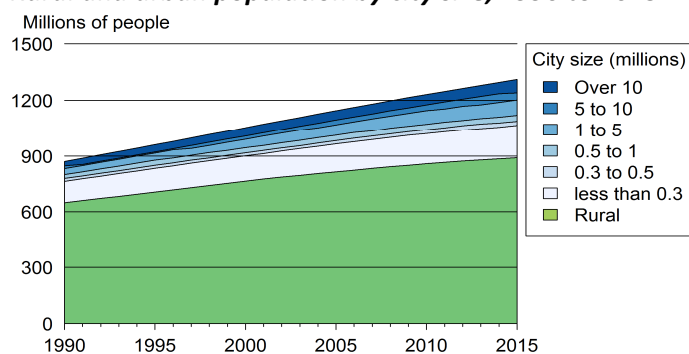


# India

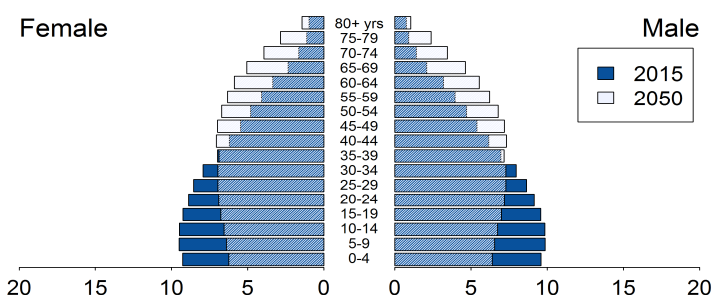
## Demographic trends

Population size (millions), 1990, 2015	870.6	1311.1
Average annual growth rate (%), 1990, 2015	2.1	1.2
Urban population (% of pop.), 1990, 2015	25.5	32.0
in cities over 1 million people	8.2	14.7
in cities from 0.3 to 1 million people	4.2	4.1
in cities < 0.3 million people	13.2	13.3
Population density (pop. per km <sup>2</sup> ), 1990, 2012	264.8	384.4
Foreign population (% of pop.), 1990, 2013	0.9	0.4
Net migration rate (migrants per 1 000 pop.)	-0.1	-0.4
Life expectancy at birth (in years)	59.2	67.5
Total fertility rate, 1990, 2015 (Live births per woman)	4.0	2.4
Adolescent fertility rate (Live births per 1 000 women aged 15-19 years)	94.0	30.4

## Rural and urban population by city size, 1990 to 2015



## Population age structure, 2015 and 2050



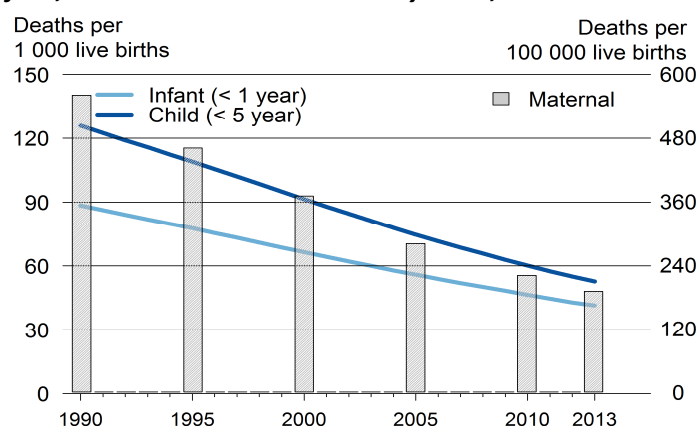
## Poverty and inequalities

Population living in poverty (% of population)		
below 1.25 dollars (2005 PPP) a day, 1993, 2011	49.4	23.6
below 2 dollars (2005 PPP) a day, 1993, 2011	81.7	59.2
below national poverty line, 1993, 2011	45.3	21.9
Gini index (income equality coefficient), 1993, 2011	30.8	33.6
Population with access to		
Improved water sources (% of pop.)		
Rural, 1990, 2015	64	93
Urban, 1990, 2015	89	97
Improved sanitation (% of pop.)		
Rural, 1990, 2015	6	29
Urban, 1990, 2015	49	63

## Health

Mortality rate (deaths per 1 000 live births)		
Infant, 1990, 2013	88.4	41.4
Under-five, 1990, 2013	125.9	52.7
Children under-five underweight (%), 1992, 2006	52.8	43.5
Maternal mortality ratio, 1990, 2013 (deaths per 100 000 live births)	560	190
Antenatal care visit, at least one visit, 1993, 2006 (% of women with live births)	61.9	74.2

## Infant, child and maternal mortality rates, 1990 to 2013



## Population living with HIV

Total adults, number, 1990, 2013	93858	2E+06
AIDS deaths, number, 1990, 2013	1963.0	1E+05
HIV prevalence rate (% pop. 15-49 yrs), 1990, 2013	0.0	0.3

## Total health expenditure

% of GDP, 1995, 2013	4	4
Current PPP dollars per capita, 1995, 2012	46.3	156.9
General government health expenditure		
% of government expenditure, 1995, 2013	7.6	4.5
Current PPP dollars per capita, 1995, 2011	11.9	43.8

## Education

Gross enrolment (% of respective school age population)		
Primary education	-	-
Secondary education	-	-
Tertiary education, 2000, 2013	9.5	24.7
Adult literacy rate (% of pop. aged 15 yrs and above)		
Female, 1991, 2015	33.7	62.8
Male, 1991, 2015	61.6	80.9
Public expenditure on education		
% of GDP, 1997, 2012	2.8	3.9
% of total government expenditure, 1997, 2012	10.7	14.2
Public expenditure per pupil (% of GDP per capita)		
Primary, 1999, 2012	11.8	9.0
Secondary, 1999, 2012	24.6	15.2
Tertiary, 2000, 2012	94.0	54.9
Gross domestic expenditure on research/development		
% of GDP, 1999, 2011	0.7	0.8
Current PPP dollars per capita, 1999, 2011	13.6	38.5

## Air pollution and climate change

### Greenhouse gas emissions

Million tons CO <sub>2</sub> -e <sub>q.</sub> , 1990, 2012	1387.4	3002.9
% change per annum, 1990, 2012	1.6	6.2
Tons CO <sub>2</sub> -e <sub>q.</sub> per capita, 1990, 2012	1.6	2.4
Tons CO <sub>2</sub> -e <sub>q.</sub> /1 000 US dollars GDP, 1990, 2012	4.2	1.6

### CO<sub>2</sub> emissions from fuel combustion

Million tons CO <sub>2</sub> -e <sub>q.</sub> , 1990, 2013	534.1	1868.6
% change per annum, 1990, 2012	5.3	6.8
Tons CO <sub>2</sub> -e <sub>q.</sub> per capita, 1990, 2013	0.6	1.5
Grams CO <sub>2</sub> -e <sub>q.</sub> /US dollar GDP, 1990, 2013	1521.2	1276.0

## Water

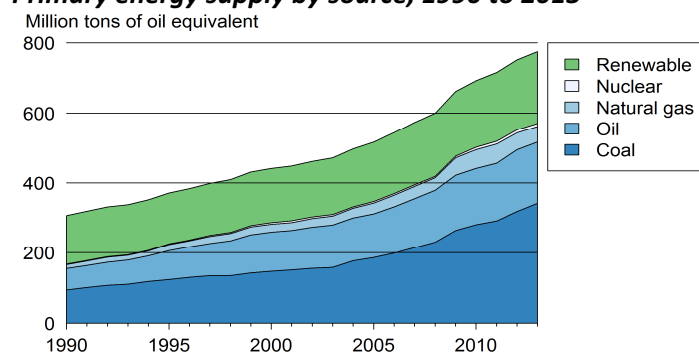
Renewable water available *, 1992, 2014	2 108	1 475
Domestic water withdrawal *, 1990, 2010	28.7	45.5
* (m <sup>3</sup> per capita per annum)		

## Energy

### Total primary energy supply (TPES) (kg of oil equivalent)

Per capita, 1990, 2013	352.2	606.1
Per 1 000 GDP 2005 US dollars, 1990, 2013	873.4	529.5
Renewable energy (% of TPES), 1990, 2012	44.1	25.2

### Primary energy supply by source, 1990 to 2013



## Biodiversity

### Areas protected

Marine (% of territorial water), 1990, 2014	1.5	2.1
Terrestrial (% of surface area), 1990, 2014	4.7	5.4
Forest (% of land area), 1990, 2012	21.5	23.1

## Natural disasters

Deaths (number per annum), 1990, 2015	2 509	167
People affected (1 000 per annum), 1990, 2015	4 118	0
Economic damages (% of GDP), 1990, 2014	0.9	1.1

## Connectivity

Mobile cellular subscriptions,* 2000, 2014	0.3	72.9
Internet users,* 2000, 2014	0.5	18.0
Fixed broadband internet subscribers,* 2014	-	1.2
* (per 100 population)		

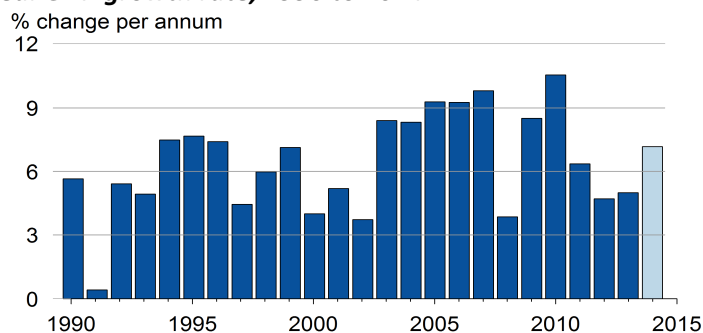
Railway density, 1990, 2012	21.0	21.7
Road density, 1990, 2011	672.7	1577.5
Km of railway/road per 1 000 km <sup>2</sup> land area		
Paved roads (% of roads), 1991, 2011	47.3	53.8
Passenger cars (per 1 000 pop.), 2000, 2009	5.8	11.3
Road traffic deaths (per 100 000 pop.), 2013	-	16.6

## Economic growth

### Gross domestic product (GDP)

Constant, billion 2005 US dollars, 1990, 2014	344.2	1573.0
Current US dollars per capita, 1990, 2013	375	1 514
2011 PPP per capita, 1990, 2013	1 809	5 126

### Real GDP growth rate, 1990 to 2014 <sup>1/</sup>



<sup>1/</sup> 2014: World Bank estimates

## Employment

### Employment-to-population ratio

% Population aged 15 and above, 1991, 2013	58.6	51.5
% Female aged 15 and above, 1991, 2013	33.3	25.6
% Male aged 15 and above, 1991, 2013	82.1	75.9
Unemployment rate (% of labour force), 1991, 2013	4.3	3.6
Female, 1991, 2013	5	4
Male, 1991, 2013	4	3.5
Youth unemployment rate		
% of labour force aged 15-24, 1991, 2013	10.6	10.5

## Fiscal balance

Government revenue (% of GDP), 1990, 2013	10.7	9.4
Government expenditure (% of GDP), 1990, 2013	17.3	14.0

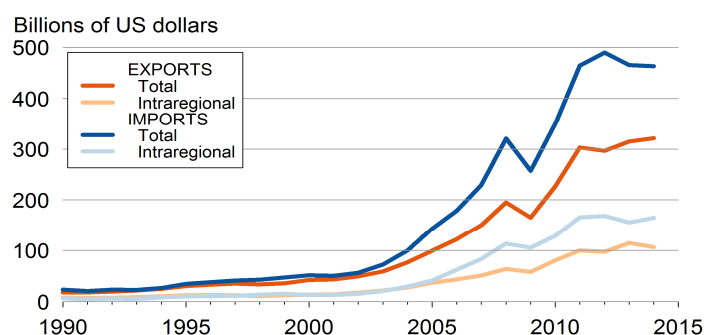
## Monetary measures

Inflation rate (% per annum), 1990, 2014	9.0	6.4
Exchange rate against US dollar, 1990, 2014	7.9	4.1
(% change per annum)		

## International trade

Exports of merchandise (% of GDP), 1990, 2014	5.5	15.5
Imports of merchandise (% of GDP), 1990, 2014	7.2	22.3
Exports of services (% of GDP), 2014	-	7.5
Imports of services (% of GDP), 2014	-	7.1

### Total and intraregional exports and imports, 1990 to 2013



## International financing

FDI inflows (% of GDP), 1990, 2014	0.1	1.7
FDI outflows (% of GDP), 1990, 2014	0.0	0.5
ODA received (% of GDP), 1990, 2013	0.4	0.1
Personal remittances rec'd (% of GDP), 1990, 2014	0.7	3.4
Net external debt (% of GDP), 1990, 2013	26.2	22.1