

---

# Status of Antiretroviral Therapy Service Delivery in Uganda

---

Quarterly Report for March –  
June 2010

---

STD/AIDS Control Programme,  
Ministry of Health

---

Kampala  
July 2010

---

## Table of Contents:

---

Table of Contents:.....	1
Acknowledgements.....	2
1. Introduction: .....	5
2. Data and Methods:.....	6
3. ART Service Outlets:.....	9
4. Chronic HIV/AIDS Care .....	13
5. Clients on Antiretroviral Therapy: .....	16
6. Antiretroviral Therapy Outcomes:.....	18
7. Estimated ART Needs and Impact: .....	23
8. TB/HIV Integration .....	24
9. Antiretroviral Drug Resistance:.....	27
Annex 1: Summary HIV/AIDS care Statistics for Jan – March 2010 .....	30
Annex 2: ART Outcomes.....	39

## Acknowledgements

---

The authors of this report acknowledge with thanks all health workers in various facilities who compile quarterly cross-sectional and cohort reports that formed the basis of this Quarterly Report. The tireless efforts of District Health Officers, Regional ART Coordinators and Implementing Partners that support health facilities to implement the revised patient monitoring system have been very much appreciated. During this quarter, the ART Implementing Partners that supported facilities to submit quarterly reports included; AIDS Relief, STAR-EC, NUMAT, Baylor College of Medicine and Mildmay International. We would like to appreciate the support received from the MOH-CDC Cooperative Agreement, and the Global Fund that facilitated teams from MoH, Regional hospitals and district health teams to visit health facilities in various regions and supported them to compile and submit the reports. They also supported the collection of longitudinal cohort data on treatment outcome and additional data that is not routinely reported. We would like to thank Mr Nathan Natsieri of the WHO Country Office for GIS support, and Ms Margaret Basia for data entry.

We would like to make special appreciation to CDC-Uganda and JCRC for providing facility level reports for facilities that had not submitted them directly to the MoH. CDC-Uganda also provided additional information on TB HIV collaborative activities that is not routinely reported.

The Patient Monitoring Activity in the Ministry of Health is supported by the World Health Organisation through the Country Office for Uganda, and CDC-Uganda through the Cooperative Agreement with the Ministry of Health.

*This report was compiled for the Ministry of Health by:  
Dr Norah Namuwenge (Programme Officer, ART M&E, ACP),  
Dr Wilford L. Kirungi (SMO / Epidemiologist, ACP, MoH),  
Dr Zainab Akol (Programme Manager, ACP, MoH),  
AIDS Control Programme, Ministry of Health*

*All Inquiries should be addressed to:  
The Programme Manager,  
AIDS Control Programme, Ministry of Health,  
P.O. Box 7272, Kampala, Uganda*

## Executive Summary:

---

By end of June 2010, there were 414 accredited facilities providing ART services in the public and private sector in Uganda. The number of active ART clients had increased to 237,070 by June 2010, of whom 89 percent were adults aged over 15 years, 8 percent were children aged less than 15 years, and 3 percent had their age not specified. By end of June 2010, the cumulative number of individuals who had ever started ART in Uganda was 343,809, implying that the current enrolment is 69% of this total. During the quarter April – June 2010, 15,312 clients were enrolled onto ART country wide. Among the 89 percent (211,287) of adults clients with information on ART regimen, 97.1 percent (184,033) were on standard first-line regimens, 2.9% (5,508) on second-line regimen. Among 19,089 children with ARV regimens specified, 96 percent were on first-line regimen.

Approximately 540,094 adults and children were eligible for ART by December 2009 (85.8% adults 15 years + and 14.2% children aged 0-14 years) based on the new MoH ART eligibility criteria of < 350 CD-4 T-cells per microliter. However, by end of June 2010, 43.9% of these individuals were already enrolled on ART. The ART coverage among adults was 46.9% and slightly over one quarter of children (25.6%). At its current coverage, the Uganda ART programme is estimated to have resulted in 29% reduction in AIDS-related mortality in 2009, and nearly 2 years improvement in life expectancy at birth.

Analysis of ART outcomes revealed that there appears to be a sustained temporal improvement in treatment outcomes. In a subset of 191 facilities with an initial cohort of 10,912 clients, the 12-month treatment outcomes were: 84.9% were still alive and on treatment, 3.6% had transferred out to other facilities; 4.2% had died, 9.1% were lost-to-follow-up, and 1.4% had switched to second-line ART regimen. In 213 facilities, the 6 month treatment outcomes during April – June 2010 for an initial cohort of 9,848 clients were as follows: 88.1% were still alive and on treatment, and 2.6% had transferred to other facilities; 3.3% had died, 6.7% were lost to follow-up, and 0.8% had switched to second-line regimen. The 24, 36, 48 and 60-months treatment outcomes obtained from subsets of facilities as at the end of June 2010 were as follows: at 24 months in 123 facilities; 82.1% of the initial cohort of 6,123 clients were still alive and on treatment, 6.6% had transferred out; 6.2% had died, 8.7% had defaulted, and 3.6% had

switched to second line regimen; at 36 months in 95 facilities; three quarters (75.7%) were still alive and on treatment, 5.2% had transferred to other facilities; 8.5% had died, one-eighth (12.3%) had defaulted, and 2.1 % had switched to second-line regimen. The 4 year outcomes in 68 facilities, among an initial cohort of 2,569 clients, 71% were still on treatment, 7.7 percent had transferred out, one in six (15.2%) had defaulted, 8.7% had died and 4.5% had switched to second line. At 5 years (60 months), data from 44 facilities indicated that among initial cohort of 1,621 clients, 59.3% were still on treatment, 11.6% had transferred out, nearly one-quarter (24.2%) had defaulted, 11 percent had died and 7.7% had switched to second-line treatment.

There appears to be a temporal decline in the burden of tuberculosis among HIV-positive clients. For instance, both the proportion of clients with history of TB, and those diagnosed with active tuberculosis during screening for ART eligibility in a subset of facilities over the 5 year period (2006-1010), declined from 1.9% to 0.3%, and 4.3% to 2.4%, respectively. Similarly, the incidence of tuberculosis ascertained during during ART follow-up among the six and 12-months ART cohorts in the same subset of facilities during 2006 - 10 also declined.

## 1. Introduction:

---

Uganda is continuing to roll out antiretroviral therapy (ART) services in the public and private sector, after the emergency phase of rapid roll out that was characterized by involvement of multiple implementing partners. However, the ART service delivery programme is at cross roads. On the one hand, the recently revised ART treatment guidelines, where the ART eligibility criteria for adults was aligned with WHO recommendations means that the number of HIV-infected people eligible for antiretroviral treatment has markedly increased. At the same time, most external funding sources for ART services in the country are experiencing level funding. This situation calls for concerted efforts to harmonise the multiple ART implementing partners in the country, and to increase efficiencies in service delivery. The current landscape also calls for increased government ownership of the programme as well as integration of services. This harmonization and rationalization of ART service delivery also includes ART information systems. In this situation, information sharing becomes even more critical.

The Ministry of Health is mandated to lead and closely monitor the roll out of ART services in the country. An information system for patient and programme monitoring has been established as part of the health management information system. This system was recently updated to embrace the 3-interlinked patient monitoring system for Chronic HIV/AIDS care/ART, PMTCT/Child Health and TB/HIV. Under this framework, all facilities are expected to maintain longitudinal patient information in facility-held records, conduct regular analyses and provide regular reports to the Ministry of Health and the respective district health teams. Implementing partners are expected to align with the national systems. During the past year, many facilities have been supported to adapt the revised system. In addition, several implementing partners have also adapted the system and are increasingly submitting regular reports to the MoH. The MoH in turn is expected to regularly collate the information and disseminate it timely, to all stakeholders in order to inform strategic planning and evaluation.

This report of antiretroviral therapy services in Uganda during April – June 2010 is part of the quarterly series that the Ministry is committed to providing to stakeholders and to provide

feedback to facilities. It is based on reports submitted to the Ministry by facilities and implementing partners during April – June 2010, as well as data from operational research and other sources.

As a report for the second quarter (mid-year), more detailed information has been provided than in the previous quarterly report. In this report, section 2 highlights the data sources and methods used. Section 3 summarises information on coverage and distribution of ART service outlets, while section 4 presents information on clients enrolled in chronic HIV/AIDS care. Section 5 highlights information relating to number of clients on ART, while antiretroviral therapy outcomes are summarized in section 6. The estimated ART need and the impact of ART programmes are summarized in section 7, while information on TB/HIV Integration is summarized in section 8. Section 9 highlights the status of tracking and prevention of antiretroviral drug resistance.

This report is intended for use by ART implementing partners, district health teams, facility managers, line ministries, development partners, and other individuals involved in planning and provision of ART services in the country. It is hoped that stakeholders will find this report useful in informing strategic planning and evaluation of programmes.

## 2. Data and Methods:

---

This report summarises the status of ART service delivery in Uganda during April -June 2010. It was compiled from routine reports of health units providing care and treatment in the country. All units are expected to submit quarterly reports to the Ministry of Health by the 28<sup>th</sup> day of the month following the end of the quarter, using standard MoH reporting formats. However, for April -June, only 39% of ART facilities reported on time, which delayed publication of this report. Consequently, the majority of reports were retrieved during the quarterly supervision.

The proportion of facilities submitting reports using the MoH reporting format continues to increase (77% during April- June 2010 compared to 65% during January – March 2010, and 41% during October –December 2009). In instances, where facilities submitted reports directly to the MoH, and at the same time, the supporting implementing partner also submitted reports for the facility, the reported submitted by the health facility took precedence, while that submitted by the IP was only used to validate the facility reports. About 17 facilities i.e. one hospital (Kisubi hospital), 11 PFP facilities, 4 HC IVs and one HC III didn't submit reports. The facilities are estimated to be providing services to less than 1000 clients.

The data used in the compilation of the report was obtained from various sources as follows:

**Facilities providing ART services:** This information was obtained from routine programme monitoring and facility accreditation records, augmented with data from various IPs.

**Number of clients in Chronic HIV/AIDS care:** This data was obtained as follows. i) Number of active clients in chronic HIV care was obtained from facility reports of 402 facilities, 397 were also providing ART and 5 facilities were only providing pre-ART care. Facility level information from 318 facilities was obtained through routine quarterly reports to the MoH, additional information for 82 facilities was obtained from the supporting IPs, while two facilities were contacted by telephone. ii) Information on new clients enrolled in chronic HIV care was reported by 346 facilities, and from quarterly facility reports for 318 facilities, and from quarterly reports of supporting IP of 28 facilities. iii) Data on cumulative number of clients ever started on chronic HIV/AIDS care was obtained from 346 facilities, 318 facilities submitted quarterly reports to MoH, and 28 facilities that submitted quarterly reports to their sponsoring IP.

**Cotrimoxazole prophylaxis.** This data was obtained from 295 facilities; 269 facilities through routine quarterly reports to MoH, and 26 facilities that reported through their supporting IP.

**Clients Eligible for ART but not started on ART:** This data was only reported by 247 facilities that reported using the MoH quarterly report form.

**Data on TB/HIV integration:** This data was obtained from various sources. i) Data on TB screening was obtained from 247 facilities that submitted quarterly reports to MoH using the revised MoH patient monitoring forms. ii) Data on prevalence of TB among newly screened



patients and incidence of TB among treatment cohorts was obtained from the routine quarterly reports of CDC-Uganda for facilities supported under the CDC ART /AIDS care information system. These facilities increased from 51 facilities in 2007 to 71 facilities in June 2010

**Number of Active and Cumulative adult and paediatric ART Clients:** Facility level information was obtained for 397 facilities; 313 facilities through their quarterly reports to MoH, and IPs supporting the facilities, i.e. JCRC (19 facilities), CDC (24 facilities), IRCU (5 facilities), HIPS (29 facilities), PIDC (4 facilities) and NUMAT (1 facility). Two facilities were contacted by telephone.

**New clients enrolled on ART during the quarter:** This information was obtained from 353 facilities, i.e. routine reports to MoH by 313, and from IPs supporting 40 facilities.

**ART Treatment Outcomes:** This data was available only from a subset of 213 facilities, that included 177 that submitted the routine quarterly reports to the MoH, and for 36 facilities, from the routine cohort reports of the IPs. Additional data was obtained from 30 facilities through field visits where longitudinal treatment outcome data was obtained jointly with facility staff.

**ART Treatment Needs and Estimated impact of treatment:** This information was obtained from modelling of the Uganda HIV epidemic using standard soft ware (Epidemic Projection Package (EPP), WHO/UNAIDS, 2010) and Spectrum 3.15, Beta 4, Futures Institute, USA). The inputs include programme and antenatal HIV prevalence data from the HIV surveillance system, triangulated to obtain a curve for HIV prevalence among adults for the period 1970 – 2010), and corrected for population estimates using the 2004-05 national sero-survey data(3). These were then applied to national population demographic parameters in Spectrum and coverage of adult and paediatric ART, cotrimoxazole prophylaxis and PMTCT, and survival of PLWHA. Other parameters such as survival of HIV-infected people were based on default values. The proportion of people in need of ART is based on WHO recommendation for initiation of ART in resource limited settings, i.e. CD-4 T-cell counts of  $\leq 350$  per microlitre. The estimated need for ART, AIDS mortality and mortality averted and other estimated impacts of ART were then determined.

**Antiretroviral Drug Resistance:** Information on HIVDR early warning indicators (EWI) was obtained from the 2009 HIVDR EWI assessment conducted in a sample 76 facilities in which cross sectional and retrospective treatment cohort data was abstracted from clients' medical records, and assessed for compliance with national recommendations. Descriptive statistics of the variables of interest were produced separately for each ART facility and the proportion of sites meeting selected targets determined.

In the report, descriptive statistics of the various estimates were derived through cross tabulation. Since the information was obtained from various sources, some data sources could not provide for age or sex disaggregation. In such instances, the disaggregation was restricted to the subset of data that permitted that analysis.

### 3. ART Service Delivery Outlets:

#### *Services Delivery Outlets for Adults:*

By the end of the quarter, the number of accredited and active ART service outlets in the country had increased to 414 from 398 that were reported at the end of the previous quarter. Just like the previous quarter, all referral and general hospitals in the country were providing ART services. About 81 percent of HC IVs and 6 percent of HC IIIs were already providing ART services to adults (table 3.1). The HSSP III indicator tracking coverage and equity of ART services is based on the proportion of facilities from HC III onwards that provide ART services. Over one quarter of facilities from HC III onwards and 89 percent of facilities from HC IV onwards were already providing ART services by June 2010. There were also 68 private for profit clinics, and 39 specialised ART clinics and research programmes providing adult ART services during this period.

Table 3.1: Coverage of ART Services by level of Facility as of March 2010:

Category of Health Facility	No. and % Providing ART			No. and % Providing Paediatric ART	
	N	n	%	N	%
<b>Health Facility Level</b>					
National/Regional Referral Hospitals	15	15	100	15	100
General Hospitals	101	101	100	83	82.2
Health Centre IV	166	134	81.0	117	70.5
Health Centre III	905	54	6.0	34	4.2
Health Centre II	1887	3	0.2	2	0.1
Research Programmes and specialized clinics	NA	39		34	
Private-for-profit clinics	U	68		11	
<b>Ownership</b>					
Public facilities		256		209	
NGO facilities		74		68	
Private for Profit facilities		72		11	
Research programmes/Academia		12		8	
Total (Facilities from HC IV onwards)	282	251	89.0	215	76.2
Total (Facilities from HC III onwards)	1187	305	25.7	249	21.0
Total (All Facilities)		414		296	

NA: Not applicable, U: Unknown

In all, 62 percent of ART facilities in the country were in public facilities, 18 percent in NGO clinics, and 17 percent in private-for-profit clinics. There were also 12 clinics operated by research programmes / academic institutions.

#### *Service Delivery Outlets for Paediatric Clients:*

By the end of June 2010, the number of accredited and active ART service outlets providing paediatric ART services in the country had increased to 296 from 245 at the end of the March

2010. About 296 of the 416 ART outlets providing services to adults were also concurrently providing paediatric ART services. All referral hospitals, over 80 percent of General hospitals and about two thirds of HC IVs were providing paediatric ART services during this period. Overall, over two thirds of facilities from HC IV onwards, and 21 percent of facilities from HC III onwards were providing paediatric ART services by end of June 2010. In addition to this, there were 34 clinics run by research programmes/specialised clinics and 11 private-for-profit clinics also providing paediatric ART services.

*District Level Coverage of ART Services:*

By end of June 2010, 96% (108) of the 112 districts in the country had at least one ART service outlet. The districts that didn't have any ART service outlets comprised of some of the districts that were recently carved out of the remote parts of the mother district i.e. Ntoroko, Kyankwanzi, Kween, Buhweju and Mitooma districts. However, some of these districts are served by outreaches

from facilities outside of the district, e.g. Karugutu HC IV in Ntoroko and Kapraron HC IV in Kween. Figure 1 shows the number of ART service outlets in each district of the country. Kampala district had the highest number of ART service outlets, i.e. 19 percent of all ART service outlets in the country.

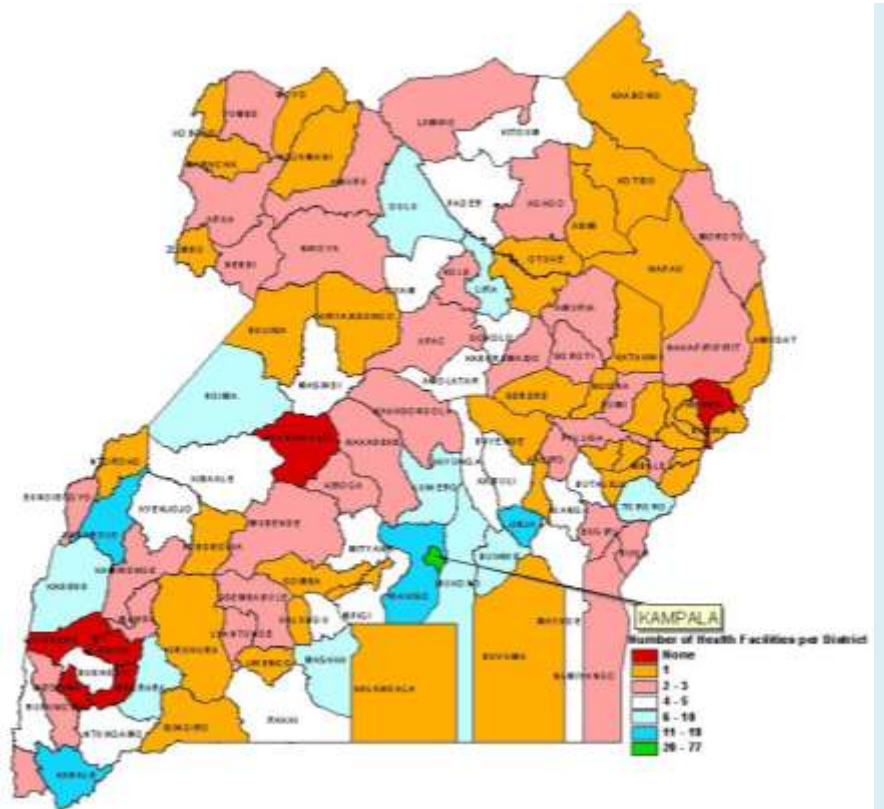


Figure 1: Map of Uganda showing number of ART service delivery outlets per district

*ART Service Outlets*

*According to Supporting Implementing Partner:*

The ART service outlets in the country are supported by the MoH and / or other implementing partners (IPs). These IPs are usually projects or local / international NGOs supported by one or more Global Health Initiatives such as PEPFAR or the Global Fund. There are currently 17 IPs supporting ART service delivery in various facilities in the country.

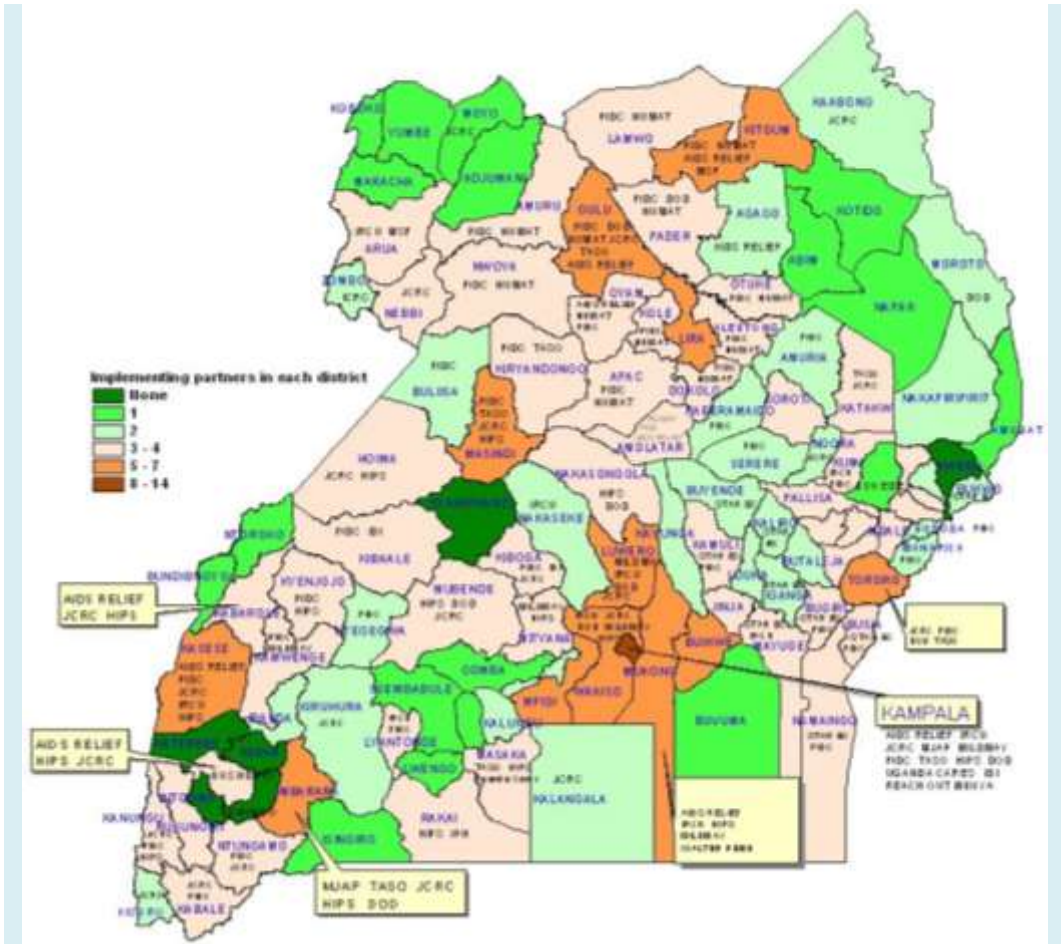
It is still common to have one ART facility supported by more than one IP. The specific ART implementing partners and the number of facilities that they were supporting in 2010 is shown in tables 3.3 below. Overall,

the MoH was supporting 378 of the ART service outlets. The Other IPs that were supporting a big number of ART service outlets in the country were PIDC (49 outlets), JCRC (46 outlets), NUMAT (34 outlets), STAR-EC (32 outlets), AIDS Relief (18 outlets), TASSO (17 outlets), while HIPS was supporting 68 private-for-profit

Implementing Partner	No of ART Outlets	Implementing Partner	No of ART Outlets
Ministry of Health	100	STAR E, MoH	4
TASSO	11	REACHOUT, MoH	3
AIDS RELIEF	8	Uganda Cares, MOH	3
JCRC	7	MSF, MoH	2
IRCU	2	HIPS, JRCR	1
HIPS	3	TASSO, PIDC	1
IPH	1	NUMAT, PIDC, MoH	23
HIPS, MoH	64	STAR E, PIDC, MOH	8
JCRC, MoH	32	PIDC, IDI, MoH	6
PIDC, MoH	29	PIDC, MJAP, MoH	4
STAR EC, MoH	23	STAR EC, PIDC, MoH	3
MILDMAY, MoH	11	PIDC, IRCU, MoH	2
DOD, MoH	11	PIDC, TASSO, MoH	2
AIDS Relief, MoH	10	JCRC, NUMAT, MoH	1
MJAP, MoH	10	JCRC, MOH, TASSO	1
NUMAT, MoH	10	JCRC, MJAP, MoH	1
IRCU, MoH	9	JCRC, IDI, MoH	1
Walter Reed, MoH	6	JCRC, DoD, MOH	1

facilities. The Ministry of Health working with PEPFAR are currently rationalising IP support to facilities aimed at removing overlap, duplication and inequities. Under this framework, no facility will be supported by more than one IP.

The geographical distribution of IP-support in the country based on the location of facilities they support for ART service delivery is shown in figure 2 below. Kampala district which has the highest number of ART service delivery outlets also has the highest number of IPs, i.e. 13 IPs, followed by Gulu and Wakiso districts that have six IPs each. Other districts that had at least four IPs were Kitgum, Lira, Luwero, Masindi, Kasese, Mpigi, Mukono, Buikwe, Tororo and Mbarara. There were also 19 districts with no facility supported by any other IP other than the MoH, see figure 2.



**Fig. 2: District Map of Uganda showing distribution of the various ART Implementing Partners supporting ART Service Delivery in Facilities**

## 4. Chronic HIV/AIDS Care

The current MoH guidelines recommend that all HIV-positive individuals diagnosed should be enrolled into chronic HIV/AIDS care in health facilities, where they should be regularly assessed for ART eligibility, routinely screened and treated for tuberculosis and other opportunistic infections, given cotrimoxazole for opportunistic infection prophylaxis, and counselled on HIV prevention.

### *Active Clients in Chronic HIV/AIDS care During the Quarter:*

About 402 facilities provided reports on the number of active clients enrolled in ongoing chronic AIDS care during this quarter. These included 397 facilities providing ART services, and 5 facilities providing only pre-ART care.

Table 4.1: Number of clients enrolled in chronic HIV/AIDS care

	Number	Percent*	No. facilities
<b>Active in chronic care during the quarter</b>			
No. of clients in chronic HIV/AIDS care during the quarter	490,521	100%	402
Already enrolled on ART	237,070	48.3	397
ART eligible but still in the waiting line	10,107	3.1	247
Assessed for tuberculosis	262,303	81.7	247
Started on anti-TB treatment	2,763	1.1	207
Prescribed cotrimoxazole for prophylaxis	300,069	92.7	295
<b>New enrolment during the quarter</b>			
Total new enrolment into chronic HIV care in quarter	36,956		345
Adults 15 years +	33,318	100	
Males	10,550	31.7	
Females	18,222	54.7	
Pregnant	2,511		254
Sex not categorized	4,547	13.6	
Children	3,638	100	
< 1 year	438	12.2	
1-4 yrs	1,373	37.7	
5- 14 yrs	1,266	34.8	
Age not categorized	556	15.3	
Transfer in on chronic AIDS care	2515		202
<b>Cumulative in AIDS care</b>			
Total cumulative enrolment in chronic AIDS care	838,160		346
Adults 15 years +	617,664	100	
Males	216,973	35.1	
Females	400,691	64.9	
Children	52,774	100	
< 1 year	4,834	9.2	
1-4 yrs	15,852	30.0	
5- 14 yrs	32,088	60.8	
Age not categorized	163,772		

*Percentages expressed based on proportion of clients only in the subset of reporting facilities*

These facilities reported a total 490,521 active clients enrolled in chronic HIV/AIDS care. This is about 41 percent of all HIV-infected individuals in the country. Among all these clients, nearly half (48.3%) were already on ART. Among the clients that were not on ART, information on what proportion was eligible for ART, proportion assessed for TB, and the proportion prescribed

cotrimoxazole was available from a sub-set of facilities. In these facilities, 82 percent of clients were assessed for tuberculosis, and 1.1 percent were found with active TB and started on anti-TB treatment. In another sub-set of facilities, 92.7 percent of clients were prescribed cotrimoxazole prophylaxis.

In another subset of 247 facilities, there were 10,107 clients that were eligible for ART but still on the waiting list was i.e. 3.1 percent overall, but this varied by level of facilities as shown in figure 4.1. General hospitals and Health Centres were more likely to have clients still on the waiting list. These facilities were also more likely

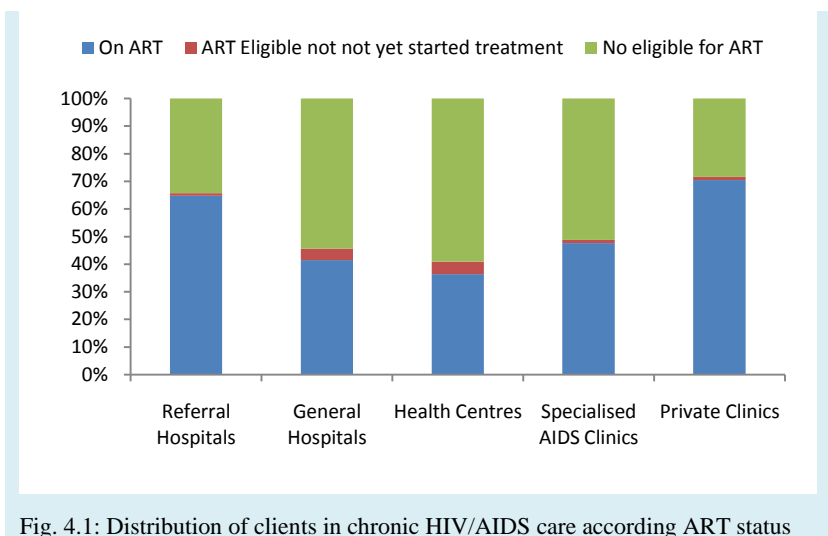


Fig. 4.1: Distribution of clients in chronic HIV/AIDS care according to ART status

to have significant numbers of clients on chronic pre-ART care. Private clinics on the other hand, were most unlikely to have clients on pre-ART care, perhaps due to the cost implication of providing chronic non-ART care.

#### *New Clients Enrolled onto Chronic HIV/AIDS care During the Quarter:*

During the quarter, approximately 36,956 new clients were enrolled for chronic HIV/AIDS care in 345 facilities. However, among these facilities, 12 did not enrol any new clients. About 90 percent of new clients were adults aged 15 years +.

Among adults, 13.6 percent were not categorised by sex. Of the remainder, the majority (54.7%) of newly enrolled adults were females. Among 18,222 females newly enrolled in care in 254 facilities, 13.8 % were pregnant and therefore potentially in need of PMTCT services. Of the 202 facilities reporting data on transfer-ins, 31 did not report any client transferring in.

Over one third of the children enrolled were aged 1-4 years (37.7%), another third (34.8%) 5-14 years, and 12.2 were aged less than 1 year. About 15.3 percent of the children did not have sex disaggregated.

*Cumulative Number of Clients Enrolled in Chronic HIV/AIDS Care:*

Data on cumulative clients ever enrolled in chronic HIV/AIDS care was obtained from 346 facilities. These included five facilities that were providing only pre-ART care. The cumulative number of clients ever enrolled in chronic HIV/AIDS care in these facilities was 838,160 of whom 73.7 percent were adults aged over 15 years, 6.3 percent were children aged 0-14 years and 19.5 did not have sex categorised. Among adults with sex categorised, 64.9% were female, while among children, the majority (60.8%), were aged 5 – 14 years. Children aged less than 1 year constituted 9.2%. Clients still active in chronic HIV/AIDS care constituted about 59 percent of all the cumulative number ever enrolled. However, the number of facilities reporting this slightly varied.



## 5. Clients on Antiretroviral Therapy:

### Active Clients on Antiretroviral Therapy

By the end of this quarter, the number of active clients enrolled onto antiretroviral therapy countrywide had increased to 237,070 from 218,359 that was reported at the end of the previous quarter. This excludes the few clients in 17 facilities that didn't provide reports timely. Among all clients, 89 percent were adults aged 15 years+, and, eight percent were children 0-14 years. About 3 percent of clients were not categorised by age, Table 5.1.

The ARV regimen of 12 percent of adults and 15 percent of children was not reported. Among adults with ARV regimen specified, 97.1 percent were on first-line ARV regimen, while 2.9 percent were on second-line

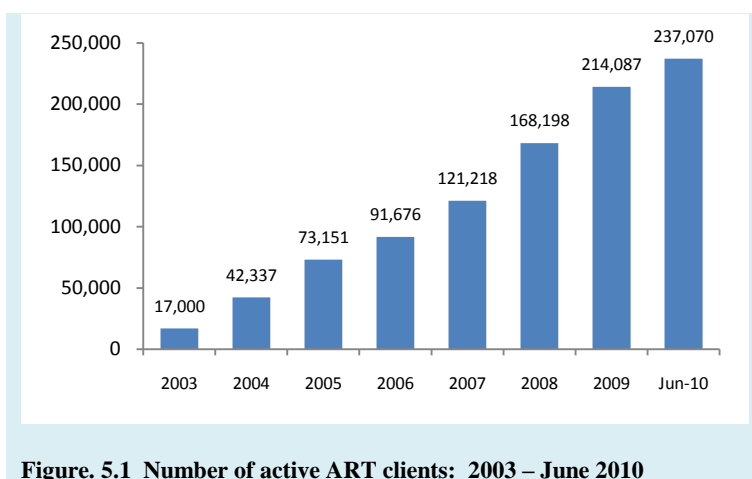
regimen. Among children, 96 percent were on first-line ARV regimen, and 4 percent were on second-line regimen.

Table 5.1: Number of Clients Enrolled in Antiretroviral Therapy

	Number of Clients	Percent	No. facilities reporting
<b>Active Clients on ART During the Quarter</b>			
Total number of clients on ART	237,070	100	397
<b>Age</b>			
Adults 15 years +	211,287	89.1	
First line	184,033		
Second Line	5,508		
Regimen not categorized	21,746		
Children	19,089	8.1	
First line	15,665		
Second Line	654		
Regimen not categorized	2,770		
Age not categorized	6,694	2.8	
<b>Sex</b>			
Adult Males	50,959		240
Adult Females	90,948		
Paediatric Males	5,615		
Paediatric Females	6,064		
Sex not categorized	84,484	47.2	
<b>New ART enrolment during the quarter</b>			
Total new enrolment onto ART	15,312	100	353
Adults 15 years +	13,665	89.2	
Males	4,188		
Females	6,918		
Sex not categorized	2,559		
Children	1,618	10.6	
< 1 year	148		
1-4 yrs	459		
5- 14 yrs	628		
Not categorized	383		
Age not categorized	29	0.2	
<b>Cumulative number of clients on ART</b>			
Total cumulative enrolment on ART	343,809	100	397
Adults 15 years +	192,827	100	
Males	71,211	36.9	
Females	121,616	63.1	
Children	17,756	100	
< 1 year	1,188	6.7	
1-4 yrs	4,899	27.6	
5- 14 yrs	11,669	65.7	
Age not categorized	110,821		

The number of active ART clients has continued to increase steadily since 2003. This number increased from 214,087 that were reported from 378 facilities in the country by end December 2009 to 237,070 at the end of June 2010. The number of active clients on antiretroviral therapy in the country since 2003 is shown in the figure 5.1. The number of clients per facility, in each district and health region is summarised in Annex 1.

### *New Clients Enrolled on ART During April – June 2010.*



**Figure 5.1 Number of active ART clients: 2003 – June 2010**

Data on new enrolment during the quarter was reported by a subset of 353 facilities. Of these 25 facilities did not enrol any new ART clients during the quarter. In the remaining facilities, 15,312 new client were enrolled. Among these, 89.2 percent were adults aged 15 years+, and 10.6 percent were children aged 0-14 years (approximately 0.2 percent of new clients were not categorised by age). Among the adults with sex disaggregation, 37.7% were males and 62.3% were females. Among the 1,235 children with age disaggregation, 50.9 percent were aged 5-14 years, 37.2 percent were aged 1-4 years and 12 percent were under one year of age.

### *Cumulative Number of ART Clients:*

Data on cumulative number of clients ever enrolled on ART was obtained from 397 facilities. By end of June 2010, the cumulative number of ART clients in facilities countrywide was 343,809 69 percent of whom were still active on ART. Age and sex disaggregated data was available from 290 facilities. Among the 205,996 cumulative clients in these facilities, 91.6% were adults aged 15 years +, and 8.4 percent were children aged 0-14 years. Among adults, the majority (63 percent) were females. Among children, two thirds were aged 5-14 years, and just over one quarter of children were aged 1-4 years.

## 6. Antiretroviral Therapy Outcomes:

Table 6.1 below summarises baseline characteristics of ART clients and their treatment outcomes at 6, 12, 24, 36, 48 and 60 months for respective cohorts that completed this treatment duration during April – June 2010. The data was obtained from various numbers of health facilities as shown in the table. About one half of accredited ART facilities in the country provided data on 6- and 12-month ART outcomes, while about one quarter of facilities provided data on 24- and 36-month outcomes. Only 44 facilities provided data on treatment cohorts that completed 60 months of treatment during this reporting period.

**Table: 6.1 Baseline characteristics and ART outcomes for cohorts that completed 6, 12, 24, 36, 48 and 60 months of ART during April-June 2010**

	Baseline and Follow up characteristics for ART cohorts that during April – July 2010 completed:											
	6 months		12 months		24 months		36 months		48 months s		60 months	
	%	N	%	N	%	N	%	N	%	N	%	N
No. of facilities reporting	213		191		123		95		68		44	
<b><u>Baseline</u></b>												
No. of clients that started ART at Facility	9848		10912		6123		3408		2569		1621	
Transfer-ins since ART start*	4.3	426	4.1	445	8.9	558	6.3	216	9.4	244	14.0	233
Transfer-outs since start**	2.6	255	3.6	397	6.6	404	5.2	177	7.7	199	11.6	192
Net cohort	10013		10960		6277		3447		2594		1662	
% with Baseline CD-4 T-cell counts done	21.0	2099	20.4	2234	37.7	2148	24.5	844	41.6	1080	18.7	311
% CD-4 T-cells <250/ul***	75.6	2099	70.3	1570	76.1	1634	81.4	687	82.4	890	84.9	264
Median CD-4 T-cells/ul***	168.3	2099	185.8	1570	141.8	1634	137.8	687	130.5	890	117.5	264
<b><u>Follow up Assessment</u></b>												
% with follow up CD-4 T-cell counts	10.8	956	9.8	912	18.4	866	15.4	403	24.8	457	5.5	54
% CD-4 T-cells <250/ul***	29.9	286	30.7	280	22.5	195	30.8	124	23.6	108	16.7	9
Median CD-4 T-cell/ul ***	327		379.6		376.7		467.9		439.4		527	
<b><u>Treatment Outcomes</u></b>												
Still on ART	88.1	8821	84.9	9303	81.2	5117	75.7	2609	71.0	1842	59.3	986
Lost-to-follow up	6.7	675	9.1	995	8.7	549	12.3	425	15.2	394	24.2	402
Dead	3.3	334	4.2	456	6.2	390	8.5	292	8.7	225	11.0	183
Stopped	0.5	46	0.8	89	2.1	134	1.4	47	1.7	43	1.4	23
Lost	1.4	137	1.1	117	1.4	87	2.1	74	3.5	90	4.1	68
ART Regimen												
First-line	99.2	4087	98.6	3775	96.4	3866	97.9	1660	95.5	1615	92.3	777
Second-line	0.8	4087	1.4	3775	3.6	3866	2.1	1660	4.5	1615	7.7	777

\* Transfer-ins have been expressed as a percentage of the net cohort, \*\* Transfer outs are expressed as a fraction of original cohort that started ART at the facility, \*\*\*This is assessed among only those clients that had CD-4 T cell count tests conducted at baseline or follow up,

### ***Baseline characteristics:***

Access to CD-4 T-cell count tests at ART initiation in the country remains low. The proportion of clients that had CD-4 T-cell counts at baseline in these facilities ranged from nearly 38 percent

in the 24 months cohort to less than 20% in the 60 months cohort. However, there is no clear trend in access to CD-4 T-cell counts at baseline in the various cohorts.

Among the clients that had CD-4 T-cell counts at baseline, the median count at baseline increased steadily from 85 cells/ul in the cohort that initiated treatment 60 months prior to this quarter, to 186 cells/ul among the cohorts that initiated treatment 12 months before the quarter. Similarly, the proportion of clients with baseline CD-4 T-cells < 250 cells/ul decreased from 85 percent among the 60 months treatment cohorts to 75% among the most recent cohort. This is perhaps due to the change in the National ART eligibility criteria (from CD-4 T-cell count cut off of < 200 cells/ul to < 250 cells/ul) on the one hand, and the fact that clients are increasingly starting treatment before very serious immune deterioration occurs. In addition, some implementing partners had already adapted the WHO recommended cut off of < 350 CD-4 T=cells/ul for ART initiation even before this was adopted by MoH recently.

**Treatment Outcomes:**

The proportion of clients that had follow-up CD-4 T-cell count data was highest in the 48-months cohort (24.8%) and lowest in the 60-months cohort (5.5%), table 6.1, above. Among individuals with follow up data on CD-4 T-cell counts, the median CD-4 T-cell count and the proportion with CD-4 T-cells < 250/ul invariably improved for all treatment cohort, figures 6.1 and 6.2.

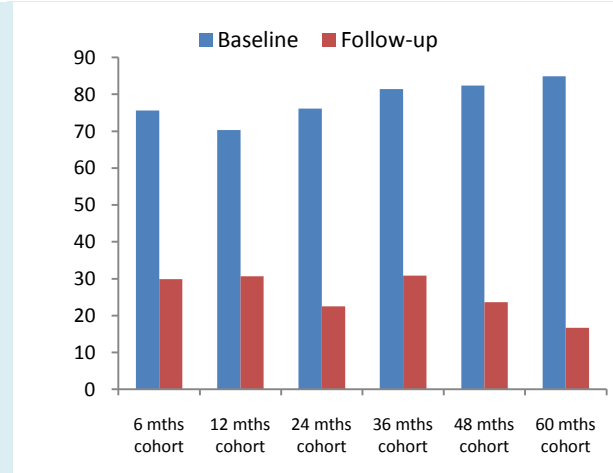


Fig 6.1 Proportion of clients with CD-4 cells < 250/ul at Baseline versus follow up at various periods on treatment

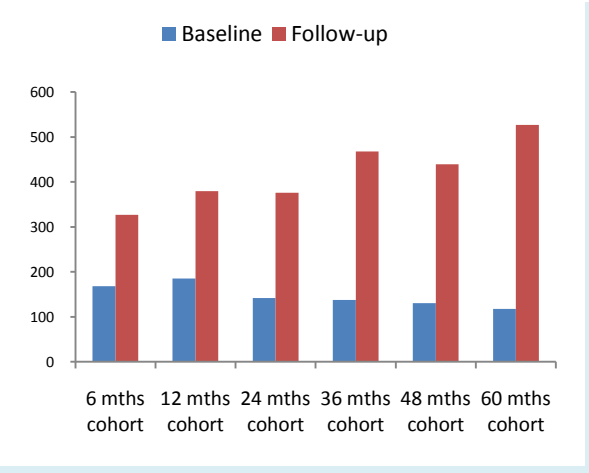


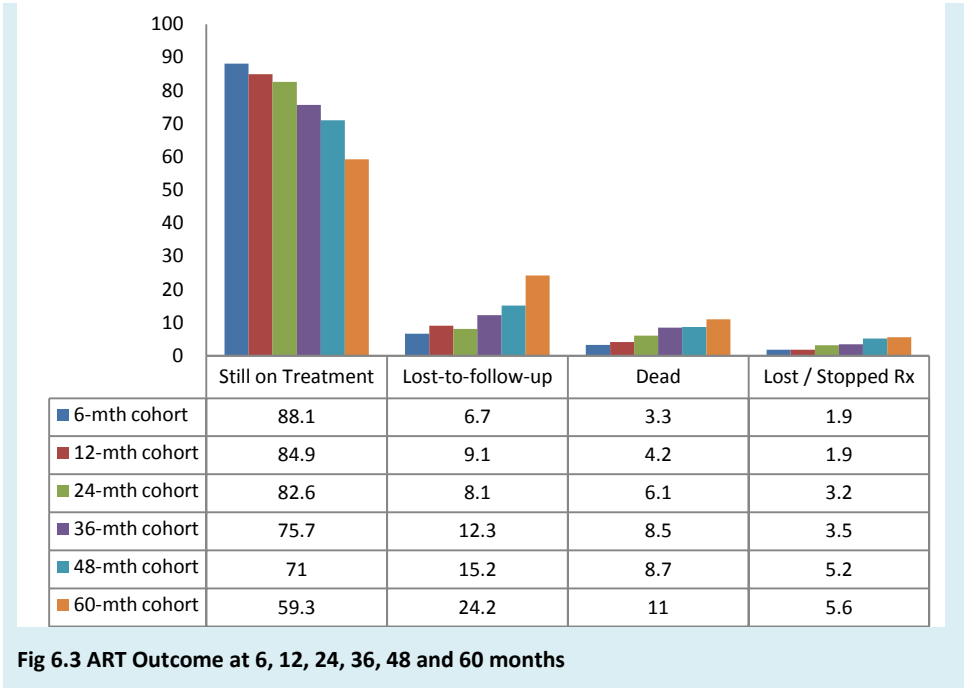
Fig 6.2: Baseline and Follow-up Median CD-4 T-cells / ul among clients that completed varying periods on treatment

At six and 12 months, the median CD-4 T-cell count had doubled among the sample of clients with data on this parameter, while at 36 and 48 months it was three and half times, and was almost four and half times at 60 months, figure 6.2. Similarly, the proportion of clients with severe immuno-suppression (CD-4 T-cells < 250/ul) fell from 76% to 30% in the six-month cohort and almost three times less in the 48 months cohort. In the 60 months cohorts, the fraction with severe immuno-suppression was four times less than baseline, figure 6.1 below.

Among clients that had their ARV regimen specified at follow-up, switching to second-line treatment remained low. Less than 2 percent of clients that had switched to second-line treatment in the 6 and 12 months cohorts, while 3.6 percent in the 24 months cohort, 4.5 percent in the 48 month, and 7.7 percent in the 60 months cohort had switched treatment, table 6.1.

The proportion of clients still on treatment, lost-to-follow-up, dead, transferred out or stopped treatment in the various cohorts in these facilities is shown in figure 6.3 below. In these data, retention on ART

decreased with increase in duration of treatment from 88.1 percent in the 6-month cohorts to 59 percent of the clients in the 60 months cohorts. On the other hand, transfer outs, mortality and loss to follow up steadily increased among cohorts that had been on treatment for longer periods



In the 6-months cohort, data from 213 facilities that recruited 10,013 clients during October-December 2009 indicated that 88 percent of the clients were still alive and on treatment at the

facility, 2.6 percent had transferred out to other facilities. About 7 percent had defaulted, and 3 percent had died.

In the 12-months ART cohorts in 191 facilities, of the 10,960 clients who started treatment 12 months previously, 85 percent were still receiving treatment from the original facility while 3.6 percent had transferred out. About 4 percent had died and 9 percent had defaulted.

Data on 24 months survival was obtained from 123 facilities that enrolled 5,705 clients. About 83 percent of clients were still on treatment at the respective facilities while nearly 6.6 percent had transferred out. Loss through death was 6 percent while 8 percent had defaulted.

Data on survival at 36 months was obtained from 95 facilities with 3,447 clients enrolled. Of these clients that started ART, nearly 76 percent were still on treatment at the original facility, 5.2 percent had transferred out, and 9 percent had died. About 12 percent had defaulted on treatment.

Information on survival at 48 months was obtained from 68 facilities that had enrolled 2,594 clients. Of these clients, nearly 71 percent were still on treatment at this facility, 7.7 percent had transferred out and 9 percent had died. Approximately 15 percent had defaulted.

Data on 5-year survival was obtained from 44 facilities among 1,662 clients enrolled 5 years previously. Of these, 59 percent were still on treatment at the same facility, 11.6 percent had transferred out, 11 percent had died, nearly one-quarter (24 percent) had defaulted.

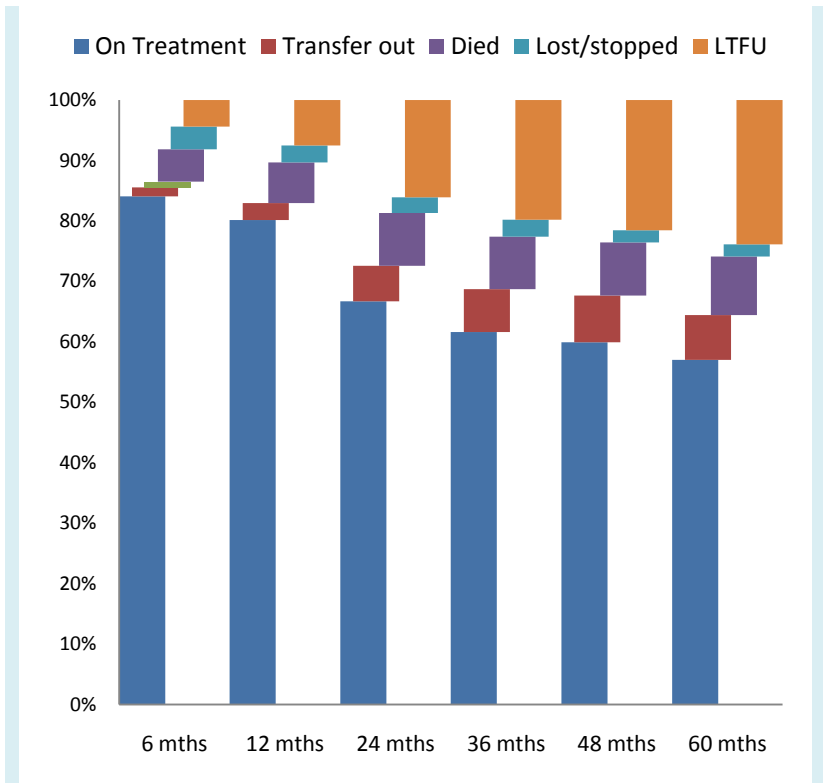
The 6, 12 and 24 months treatment outcomes for each facility, and aggregated data for each health region are summarised in Annex 2. Data on survival at 7-10 years was available from progressively fewer facilities and clients and has not been shown.

### **Longitudinal Cohorts:**

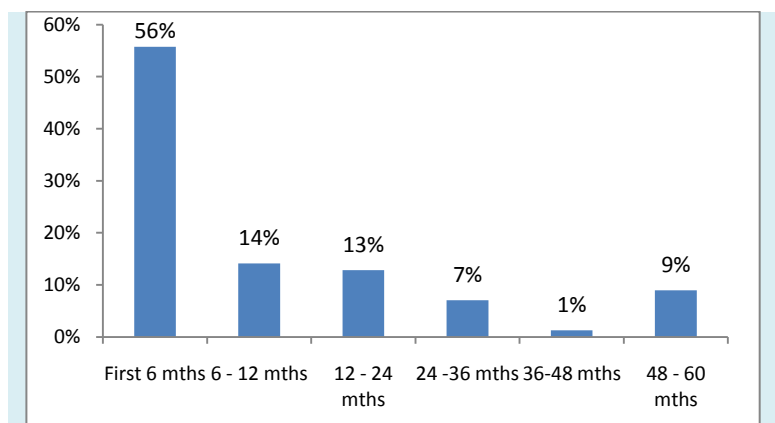
The data presented in the preceding section relates to different cohorts that made their anniversary during the April – June period. We also examined data on ART outcomes for the same cohorts when they completed 6, 12, 24, 36, 48 and 60 months of treatment. In this analysis, clients who transferred into these facilities were not included in the analysis of longitudinal treatment outcomes. The data was obtained from 30 facilities.

In these facilities, the proportion of clients still alive and on treatment at the original facility declined from 85 percent at six month to 57 percent by 60 months. During the same time, transfer outs increased from 2 percent to 7 percent, while the defaulter rate increased from 4 percent at 6-months of treatment to 24 percent by the 60<sup>th</sup> months, figure 6.4. Mortality in this cohort rose from 5 percent by six months to 10 percent by the fifth year.

This cohort experienced a total mortality of 98 during the 60 months period. Examination of the time of the occurrence of these deaths over this period reveals that 55 percent of all deaths among ART clients over the five year period occurred during the first 12 months of treatment as shown in figure 6.5 below. This observation from routine data is consistent with findings from other studies which have also documented that most mortality among ART clients occurs during the first 6 – 12 months of treatment.



**Fig. 6.4: Treatment outcomes for one longitudinal cohort at 6, 12, 24, 36, 48 and 60 months**



**Fig 6.5: Time of occurrence of mortality in the treatment cohort**

## 7. Estimated ART Needs and Impact:

### Coverage of ART Services

Estimates of the number of individuals in need on ART in the country by end of December 2009 were obtained from EPP and Spectrum models and projections by the MoH. Based on these estimates, out of approximately 1.2 million adults and children in the country that were living with HIV by December 2009, 540,094 adults and children were in need of ART based on the new MoH ART eligibility criteria, i.e. adults with < 350 CD-4 T-cells/ul. Based on these estimates, and the

number of active ART clients presented in chapter 6, 44 percent of adults and children in need of ART were already enrolled on ART by end of June

Population Category	Enrolled on ART by June 2010	ART Eligibility (<350 CD-4 T-cells/ul)		ART Eligibility (<250 CD-4 T-cells/ul)	
		Estimated ART Need	Percent on ART	Estimated ART Need	Percent on ART
Adults and Children	237,070	540,094	43.9	442,103	53.6
Adults 15 yrs +	217,425	463,334	46.9	365,335	57.8
Males	78,078	193,604	40.3	157,735	49.5
Females	139,347	269,740	51.3	207,600	67.1
Children 0 – 14 yrs	19,645	76,750	25.6	76,768	25.6

2010. About 47 percent of adults and 26 percent of children in need of ART in the country were already enrolled on treatment.

If the previous national ART eligibility criteria of < 250 CD-4 T-cells / ul is used, with 442,103 adults and children in need of ART based on these guidelines, 54 percent adults and children were already enrolled on ART by June 2010, figure 7.1.

### Estimated Impact of ART:

The roll out of antiretroviral therapy over the past six years has had favourable impact on AIDS-related mortality, life expectancy at birth, and also contributed to the reduction in vertical infections. The magnitude of this impact can be estimated from mathematical models using Epidemic Projection Package (EPP) and Spectrum modeling and projections. From

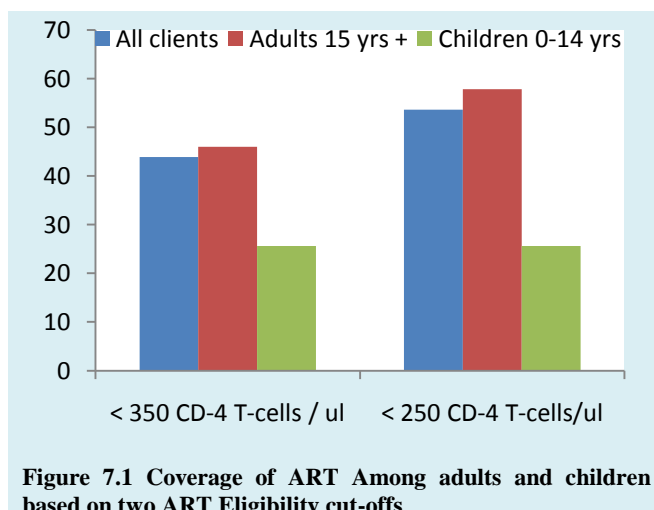


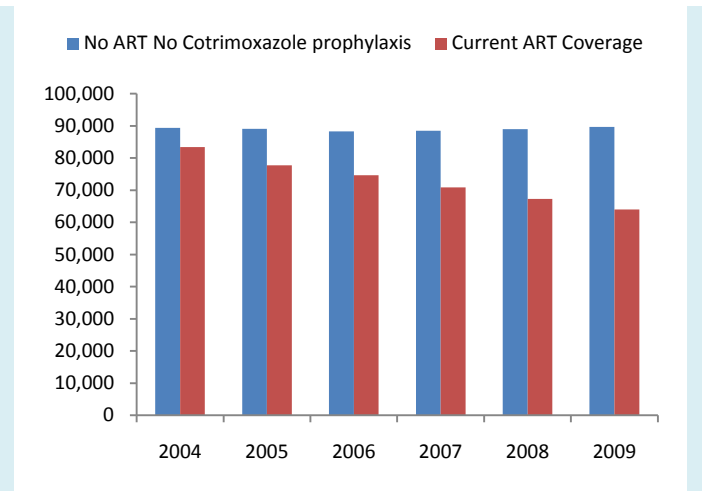
Figure 7.1 Coverage of ART Among adults and children based on two ART Eligibility cut-offs



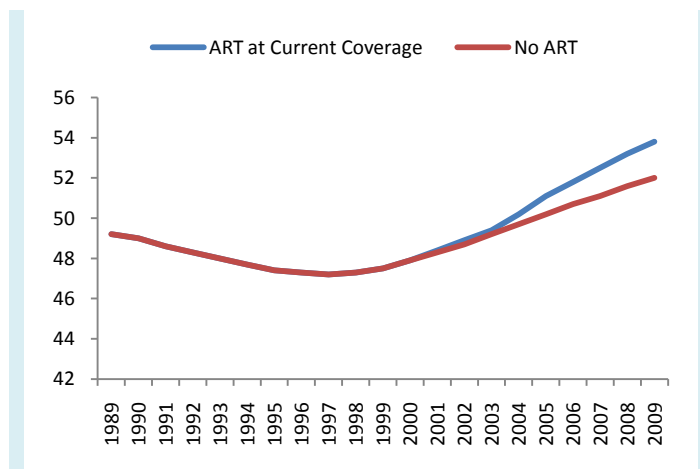
these projections, it is estimated that at the current coverage of ART, AIDS-related mortality in 2009 (64,016 adults and children) was 29 percent less than would have been in a scenario of no

ART roll out at all, figure 7.2. This figure also shows steadily declining trends in AIDS-related mortality since 2004.

The roll out of ART to the current coverage in the country has also had favourable impact on other quality of life indicators. For example, life expectancy at birth in Uganda in 2009 was already nearly two years higher than would have been in the absence of ART roll out, figure 7.3 below.



**Fig. 7.2. AIDS Related Mortality 2004-2009 comparing estimated mortality at current ART coverage and a scenario of no ART programme**



**Fig. 7.3 Life Expectancy in Uganda under current ART coverage compared with no ART Programme**

## 8. TB/HIV Integration

The National and WHO guidelines for TB/HIV integration, recommend that all HIV-positive individuals should be routinely screened for active tuberculosis, and those found infected should be started on anti-TB treatment. Furthermore, all clients on chronic AIDS care and ART should be routinely screened for TB as part of their follow-up assessment. In this report, we highlight these TB/HIV collaboration activities and the burden of tuberculosis among HIV-infected individuals.

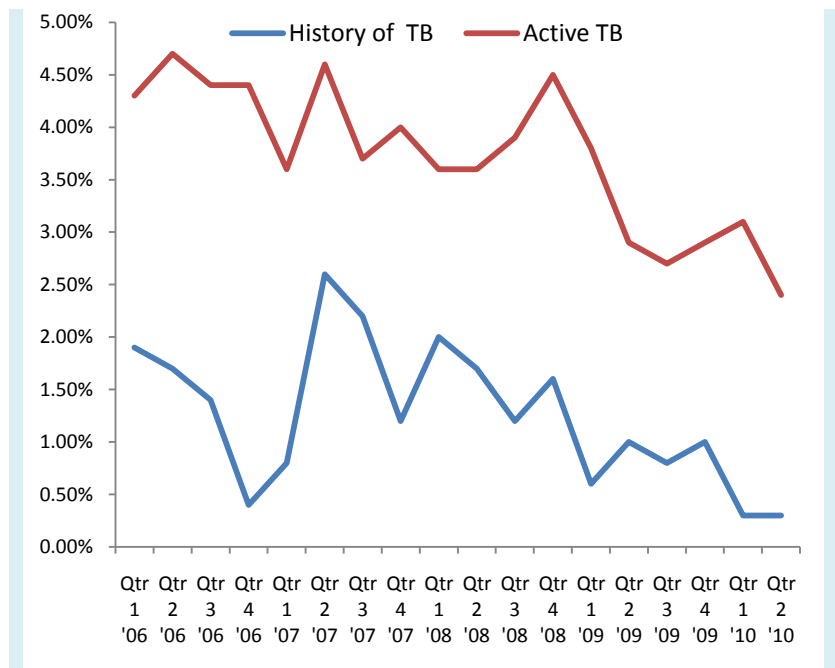
### *TB Assessment and Prevalence of active TB among Pre-ART Clients:*

Data on assessment of TB among individuals on chronic AIDS care was received from 247 facilities. Among 320,894. clients that attended for chronic AIDS care in these facilities, 81.7% percent were assessed for TB.

In a subset of 201 facilities, 1.1% (2,763) clients were found with active tuberculosis and started on anti-TB treatment, table 4.1.

### *7.1 Prevalence of TB among HIV-positive Individuals*

For this report, data was available on the prevalence of tuberculosis among 451,472<sup>1</sup> HIV-positive clients that were assessed for ART eligibility in a subset of facilities that



**Figure 8.1: Previous History and Prevalence of Active Tuberculosis among HIV-positive individuals assessed for ART eligibility 2006-10**

reported their data through CDC Uganda during 2006 - 2010. During this period, the prevalence of history of tuberculosis shows a declining temporal trend from 1.9% to 0.3%, figure 8.1. Similarly, the prevalence of active tuberculosis ascertained during screening for ART eligibility

<sup>1</sup> Double counting of the same individuals if screened on more than one occasion is not excluded

in these facilities also showed a similar temporal trend, declining from 4.3% to 2.4% over the same period.

## 7.2 Incidence of TB among ART Clients:

Data was also available on the incidence of active tuberculosis among individuals on ART as ascertained during client follow up in the same facilities. Table 7.1 shows the incidence of active tuberculosis among individuals during their first 6 and 12-month of ART in 2006 - 2010. The incidence of active tuberculosis among these individuals was high in both the six and twelve month periods. However, there appears

Quarter	6-months cohorts		12-months cohorts			
	Number of active clients	Incidence of active Tuberculosis		Number of active clients	Incidence of active Tuberculosis	
		N	%		N	%
Quarter 1, 2006	3038	130	4.3	2499	134	5.4
Quarter 2, 2006	3829	369	9.4	3905	377	9.7
Quarter 3, 2006	4112	311	7.6	3873	325	8.4
Quarter 4, 2006	3927	188	4.8	3474	268	7.7
Quarter 1, 2007	3493	303	8.8	3904	432	11.1
Quarter 2, 2007	4692	280	6.0	3690	413	11.2
Quarter 3, 2007	6429	427	6.6	4875	587	12.0
Quarter 4, 2007	6622	297	4.5	5588	300	5.4
Quarter 1, 2008	5398	329	6.1	5072	341	6.7
Quarter 2, 2008	6408	443	6.9	5541	358	6.5
Quarter 3, 2008	7209	535	7.4	5303	372	7.0
Quarter 4, 2008	7937	427	5.4	5204	351	6.7
Quarter 1, 2009	7444	515	6.9	7121	541	7.6
Quarter 2, 2009	4636	272	5.9	7366	454	6.2
Quarter 3, 2009	6261	348	5.6	6436	358	5.6
Quarter 4, 2009	8450	411	4.9	4210	290	6.9
Quarter 1 2010	7821	348	4.4	5852	401	6.9
Quarter 2 2010	6528	344	5.3	7584	468	6.2

to be a temporal declining trend in TB incidence as well, figure 8.2. This seems to coincide with sustained improvement in baseline CD-4 T-cell counts.

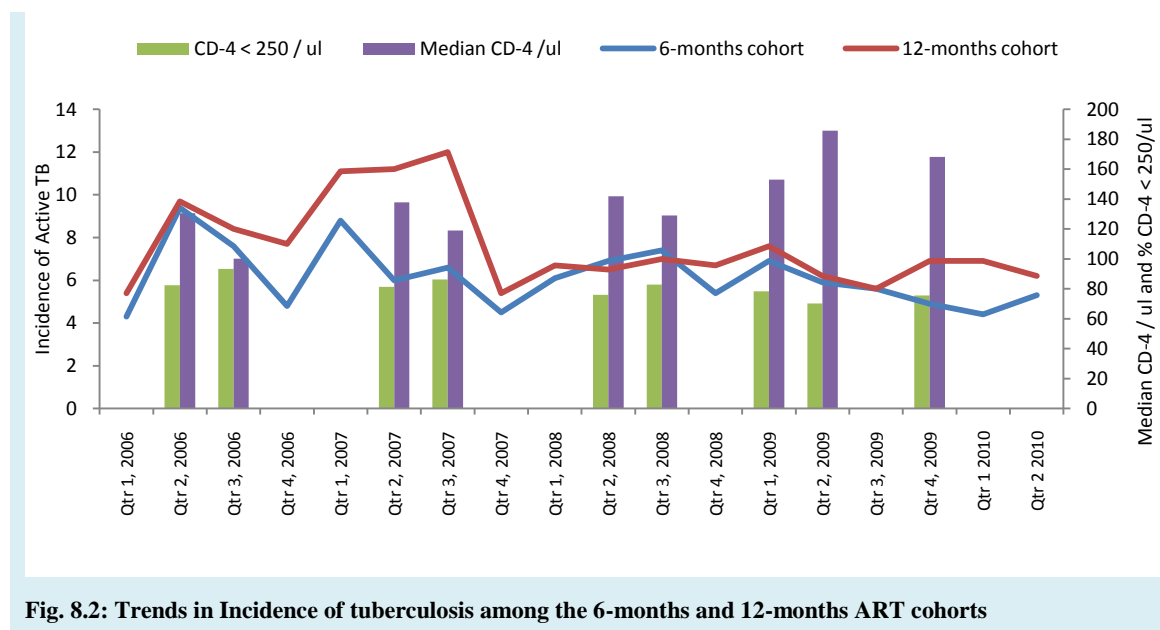


Fig. 8.2: Trends in Incidence of tuberculosis among the 6-months and 12-months ART cohorts

## 9. Antiretroviral Drug Resistance:

As access to ART services expands, maintaining optimal outcomes remains a challenge for ART programmes throughout the world. The emergence of some degree of HIV drug resistance is inevitable, given HIV's high replication and mutation rates and the necessity for lifelong antiretroviral treatment. In line with WHO recommendation, Uganda developed a strategy and plan for monitoring and prevention of antiretroviral drug resistance with the overall aim of minimizing the rate at which antiretroviral drug resistance emerges and spreads. This strategy comprises of annual monitoring of antiretroviral drug resistance early warning indicators in ART, service outlets, monitoring transmitted resistance strains in areas where ART has been wide spread for at least 3-5 years, and monitoring emerging antiretroviral resistance in treatment cohorts in sentinel sites. The status of implementation of the various components of the strategy in Uganda compared to other countries in the Region is shown in table 9.1

Table 9.1: The status of Implementation of the various Components of the HIVDR Strategies among Countries in Eastern and Southern Africa:

Country	HIVDR WG	5yr plans	EWI	Surveys of Emerging Resistance	HIVDR-Transmission TS	HIVDR database	Accredited genotyping laboratories
Zimbabwe	√	√	√			√	
Zambia	√	√	√	√	√		
Kenya	√	√			√		√
Malawi	√	√	√	√	√	√	
South Africa	√	√			√		√
Tanzania	√	√			√		
Ethiopia	√	√	√	√	√		o
Mozambique	√	√	√	√	√	√	
Uganda	√	√	√		√		√
Namibia	√	√			√	√	
Swaziland	√	√	√	√	√	√	
Botswana	√	√	√	√	√	√	

In this report we highlight the findings of the survey of antiretroviral drug resistance early warning indicators in 76 facilities in 2006. Data on transmitted HIVDR in 2 sites in Kampala and baseline ART resistance in 3 JCRC facilities will be reported in the December Report.

### *Early Warning Indicators for Antiretroviral Drug Resistance:*

During December 2008 – February 2009, we assessed HIVDR Early Warning Indicators or barriers to long-term ART success i.e. incorrect prescribing practices, loss-to-follow-up, poor

retention on first-line ART, clinical review appointment keeping by ART clients, ART adherence and intermittent drug supply in a sample of 76 facilities. In this survey, trained field workers abstracted data from facility-based medical records in 76 facilities that had been providing ART services for at least one year. Data on ART prescribing practices at ART start and at 12 months, treatment outcomes at 12 months, adherence and appointment keeping during the first year of treatment was obtained for a subset of 5,618 patients recruited during July-September of 2007. HIVDR-EWI was assessed separately for each facility, with national level analysis assessing the proportion of facilities that met predetermined threshold targets. The findings were compared among categories of facilities as well as with the assessment that was conducted in 41 facilities in 2007.

Of the 76 facilities (21 with electronic patient medical records systems), 72% met the target of “appropriate prescribing practices” indicator, i.e. had all (100%) of newly enrolled patients prescribed appropriate standard first-line ARV regimen at ART start, compared to 71% of facilities in 2007. The target of < 20% of patient lost-to-follow-up during the first 12-months of ART was achieved in 76% of facilities in 2008, a decline from 85% in 2007. Among 71% of the facilities, at least 70% of the clients were retained on first-line ART during the first 12 months of treatment, compared to 75% in the 2007 assessment.

Table 9.2 Summary of the National Level Performance on the six HIVDR EWI

HIV Drug Resistance Early Warning Indicator	Reference Period*	EWI Target for all sites	% of sites meeting EWI target (n/Number of sites) in 2007, N=41	% of sites meeting EWI target (n/Number of sites) in 2008, N=76
Prescribing Practices				
<ul style="list-style-type: none"> <li>Percentage of individuals starting ART who were prescribed an appropriate initial ARV regimen</li> </ul>	July-Sept 2007	100%	71	72.4
Loss to Follow-up				
<ul style="list-style-type: none"> <li>Percentage of clients starting ART who were lost to follow-up during the first 12 months of ART</li> </ul>	July-Sept 2007	≤ 20%	85	76.0
Retention on First-line therapy				
<ul style="list-style-type: none"> <li>Percentage of clients starting first-line ART who were still in first-line after 12 months</li> </ul>	July-Sept 2007	≥ 70%	71	75.0
Clinical Appointment Keeping				
<ul style="list-style-type: none"> <li>Percentage of clients on ART who kept all clinical review appointments in the year</li> </ul>	July 2007-June 2008	≥ 80%	9.8	14.1
Continuity of ARV Supply				
<ul style="list-style-type: none"> <li>Percentage of facilities which had no stock-outs of ARVs in all twelve months of the previous year</li> </ul>	July 2007-June 2008	100%	46**	28.9
ART Adherence				
<ul style="list-style-type: none"> <li>Percentage of clients who attained ≥95% ART adherence in the year***</li> </ul>	July 2007-June 2008	≥ 80%	NA	73.7

Very few facilities (10%) in 2007 met the target of “appointment keeping” i.e. the proportion of patients who attended all clinical review appointments during a year (target: 80%), this increased slightly to 14% in 2008. The proportion of facilities with at least 80% of individuals attaining  $\geq 95\%$  adherence over a 12-month period was 73.7%. About 46% of facilities reported no ARV drug stock outs over a 12-months period in 2007, but this decreased to 28.9% in 2008. Only two facilities met the targets for all the six indicators, while another two facilities didn't meet the target for any indicator. Poor appointment keeping and failure to maintain steady supply of ARVs were the main indicators with the weakest performance. Several facilities with most difficulties (especially those located in northern Uganda and private facilities) were identified in this survey.

The assessment revealed heterogeneity of risk of emergence of HIVDR in health facilities in Uganda with weaknesses in drug supply, client retention, appointments keeping and record keeping standing out as prominent barrier to long term ART success.

The other components of the HIVDR prevention and monitoring strategy i.e. monitoring emerging HIVDR in treatment cohorts and transmitted HIVDR in newly infected treatment naïve individuals are at different stages of implementation and will be reported in subsequent reports.

## Annex 1: Summary HIV/AIDS care Statistics for April – June 2010

District	ART Service outlet:	Level	Implementing Partner(s)	Cumulative No on ART	No. Adults on ART	No. Children on ART	Total No. on ART	Source of data
<b>West Nile Region</b>								
Adjumani								
	Adjumani Hosp	Hosp	MOH	606	381	33	414	MOH Reporting
Arua								
	Arua RRH	RRH	MSF, MOH	8700	4732	676	5408	MOH Reporting
	Kuluva Hosp	Hos	IRCU,MOH	379	279	68	347	MOH Reporting
Koboko								
	Koboko HC IV	HCIV	MOH	908	884	41	925	MOH Reporting
Moyo								
	Moyo Hosp	Hosp	JCRC, MOH	277	165	17	182	JCRC
Nebbi								
	Nebbi Hosp	Hosp	JCRC, MOH	1592	1149	102	1251	MOH Reporting
	Angal Hosp	Hosp	MOH	156	137	1	138	MOH Reporting
	Pakwach	HC IV	MOH	113	107	6	113	MOH Reporting
Zombo								
	Nyapea Hosp	Hosp	IRCU,MOH	382	ND	ND	385	IRCU
Nyadri								
	Maracha Hos	Hosp	MOH	138	81	3	84	MOH Reporting
Yumbe								
	Yumbe Hosp	Hosp	MOH	284	267	17	284	MOH Reporting
	Midigo HC IV	HC IV	MOH	36	24	1	25	MOH Reporting
<b>Kampala Region</b>								
Kampala								
	TASO Kanyanya	AIDS Clinic	TASO, PIDC	128	24	73	97	March data
	TASO Mulago	AIDS Clinic	TASO	3885	3105	50	3155	CDC
	Mulago CDC	AIDS Clinic	MOH	117	129	0	129	MOH Reporting
	Mujhu Resea Co	AIDS Clinic	JCRC, MOH	1706	884	0	884	JCRC
	Mulago ISS	NRH	MJAP, MOH	6863	5125	0	5125	CDC
	Mulago TB-HIV	AIDS Clinic	MJAP, MOH	1688	243	0	243	CDC
	Post Natal Clinic	AIDS Clinic	PIDC, MOH	244	0	150	150	CDC
	Infect Dis Instit	AIDS Clinic	MJAP, MOH	6358	6447	0	6447	CDC
	Kampala Dispen	HC II	MOH	100	ND	ND	50	MOH Reporting
	PIDC Ward 15	AIDS Clinic	PIDC, MOH	4053	923	2237	3160	CDC
	Butabika NRH	NRH	MOH	300	297	3	300	MOH Reporting
	Makerere Univ	Hospital	PART/HIPS	290	159	0	159	MOH Reporting
	Mengo Hospital	Hospital	IRCU,MOH	2656	1825	109	1934	MOH Reporting
	Namungoona	Hospital	IRCU,MOH	1084	ND	ND	628	IRCU
	Rubaga Hospital	Hospital	MOH	1769	1179	4	1183	MoH Reporting
	Internat Hosp	Hospital	PART/HIPS,	258	ND	N	212	HIPS
	Kibuli Hospital	Hospital	MOH	345	317	2	319	MOH Reporting
	Nsambya HC	AIDS Clinic	AIDS Relief	4414	3298	329	3618	MoH Reporting
	Nsambya MTCT	AIDS Clinic	MOH	782	606	97	703	March Report
	Nsambya Pol Ho	Hospital	MOH	252	196	0	196	MOH Reporting
	Nsambya Priv	Hospital	JCRC, MOH	1037	631	18	649	JCRC
	Nsambya Gen Cl	Clinic	PART/HIPS	ND	ND	ND	ND	
	Gen Mil Mbuya	Hospital	DOD, MOH	1119	314	0	314	MOH Reporting
	Murchsion Bay I	Hospital	MOH	921	576	2	578	MOH Reporting
	Kisenyi HC IV	HC IV	MJAP, MOH	865	691	0	668	CDC
	Kawempe HC	AIDS Clinic	JCRC	564	394	30	424	JCRC/MOH
	Kawempe HC	HC IV	MJAP, PIDC, MOH	1493	1130	222	1352	MOH Reporting
	Kyadondo Med Ce	Clinic	PART/HIPS	30	ND	N	30	HIPS
	Kyambogo Uni	HC IV	MOH	82	82	0	82	MOH Reporting
	Naguru HC IV	HC IV	MJAP, MOH	1154	1095	0	1095	CDC
	Kitebi HC III	HC III	MJAP, PIDC, MOH	629	460	104	564	CDC
	Komamboga HC	HC III	MJAP, MOH	207	175	0	175	CDC
	Kawaala HC III	HC III	MJAP, MOH	765	608	0	608	CDC
	Kirudu HC III	HC III	MJAP,PIDC,MOH	957	651	91	742	CDC
	Kiswa HC III	HC III	MJAP, PIDC, MOH	1350	1866	250	2116	MOH Reporting
	JCRC	AIDS Clinic	JCRC	33245	5810	955	6765	JCRC

District	ART Service outlet:	Level	Implementing Partner(s)	Cumulative No on ART	No. Adults on ART	No. Children on ART	Total No. on ART	Source of data
	Uganda Baati Cli	Clinic	PART/HIPS	62	ND	ND	59	HIPS
	St Catherines Clin	Clinic	PART/HIPS, MOH	83	ND	ND	30	HIPS
	Africa Air Rescue	Clinic	PART/HIPS, MOH	408	ND	ND	161	HIPS
	St Jos Wandegeya	Clinic	PART/HIPS	2	ND	ND	2	HIPS
	Bweyogerere	Clinic	PART/HIPS	63	ND	ND	42	HIPS
	Bank of Uganda	Clinic	PART/HIPS, MOH	403	99	1	100	MOH Reporting
	Crane Health Serv	Clinic	PART/HIPS	2	ND	ND	2	HIPS
	Case Medical Cen	Clinic	PART/HIPS, MOH	359	ND	ND	325	HIPS
	White Horse Nurs	Clinic	HIPS/MOH	1	1	0	1	HIPS
	Jumbo Corner Cli	Clinic	PART/HIPS, MOH	ND	ND	ND	ND	
	Kadic Med Cent	Clinic	PART/HIPS, MOH	213	ND	ND	133	HIPS
	Kamwokya CCC	AIDS Clinic	AIDS Relief	2329	1802	28	1830	MOH Reporting
	KIMS Med Cent	Clinic	PART/HIPS, MOH	88	60	0	60	MOH Reporting
	SAS Foundat Clin	Clinic	PART/HIPS, MOH	695	ND	ND	260	HIPS
	The Surgery	Clinic	PART/HIPS, MOH	403	175	0	175	MOH Reporting
	Victoria Med Cent	Clinic	PART/HIPS, MOH	ND	ND	ND	ND	
	Kitante Med Cent	Clinic	PART/HIPS, MOH	548	ND	ND	308	HIPS
	Ikan Clinic	Clinic	PART/HIPS	9	ND	ND	1	HIPS
	St. Balikudembe	AIDS Clinic	Uganda Cares, MOH	1597	1566	36	1602	MOH Reporting
	Joy Medical Cent	Clinic	PART/HIPS, MOH	ND	ND	ND	ND	
	SIMS Med Cent	Clinic	PART/HIPS, MOH	191	79	1	80	MOH Reporting
	Alive Med Cent	AIDS Clinic	MOH	2504	2160	224	2384	MOH Reporting
	Intern Med Cent	Clinic	PART/HIPS, MOH	261	ND	ND	238	HIPS
	Nakasero Hosp	Clinic	PART/HIPS, MOH	ND	ND	ND	ND	
	Hope Cl Makindye	Clinic	PART/HIPS, JCRC	302	178	8	186	JCRC
	Kampala Fam Cli	Clinic	PART/HIPS, MOH	ND	ND	ND	ND	
	Home Med Cent	Clinic	PART/HIPS, MOH	ND	ND	ND	ND	
	Makindye HC III	HC III	DOD, MOH	89	ND	ND	86	Calling
	Busabala Nursin H	Clinic	PART/HIPS	10	9	0	9	MOH Reporting
	Paragon Hosp	Clinic	PART/HIPS	58	8	0	8	MOH reporting
	UGACOF Co	Clinic	PART/HIPS	2	2	0	2	HIPS
	Kireka SDA	Clinic	PART/HIPS	8	7	0	7	MOH Reporting
	Nakigala Tea Estat	Clinic	PART/HIPS	4	ND	ND	4	HIPS
	Melisa Fowers	Clinic	PART/HIPS	4	ND	ND	1	HIPS
	Mirembe Med Ce	Clinic	PART/HIPS	92	47	0	47	MOH R eporting
	Mukisa Nursing H	Clinic	PART/HIPS	ND	ND	ND	ND	
	Banda	AIDS Clinic	REACHOUT, MOH	253	238	5	243	CDC
	Bugolobi Nursing	Clinic	PART/HIPS, MOH	ND	ND	ND	ND	
	Family Hope Cent	AIDS Clinic	AIDS RELIEF	3055	2163	50	2213	MOH Reporting
	Kinawataka	AIDS Clinic	REACHOUT, MOH	989	878	57	935	CDC
	Naguru Med Lab	Clinic	MOH	ND	ND	ND	ND	
	Reach out, Mbuya	AIDS Clinic	REACHOUT, MOH	840	722	52	774	CDC
Kayunga								
	Kayunga Hospital	Hospital	Walter Reed, MOH	1398	898	88	986	MOH Reporting
	Busana HC III	HC III	Walter Reed, MOH	56	53	3	56	MOH Reporting
	Bbaale HCIV	HCIV	Walter Reed, MOH	399	255	13	268	MOH Reporting
	Garilaya HC IV	HC IV	Walter Reed, MOH	124	111	10	121	MOH Reporting
	Kangulumira HC	HC IV	Walter Reed, MOH	580	548	40	588	MOH Reporting
Luwero								
	Bombo Gen Milit	Hospital	DOD, MOH	3492	1598	65	1663	MOH Reporting
	Kalagala	HC IV	MOH	ND	ND	ND	ND	
	Luwero HC IV	HC IV	JCRC, MOH	787	373	114	487	JCRC
	Holy Cross Kiky	HC III	MILDMAY, MOH	212	129	22	151	MOH Reporting
	Ndejje Uni HC	HC IV	MOH	20	19	2	21	MOH Reporting
	Kasaala HC	HC III	MILDMAY, MOH	233	258	25	283	MOH Reporting
	Nyimbwa	HC IV	MOH	55	24	0	24	MOH Reporting
	Bishop Asili Kasan	HC IV	MILDMAY, MOH	381	245	20	265	MOH Reporting
	St Luke Namaliha	HC III	IRCU,MOH	242	176	2	178	MOH Reporting
Mityana								
	Mityana Hospital	Hospital	MILDMAY, MOH	1950	1252	87	1339	MOH Reporting
	St Padre Pio	HC IV	MOH	364	264	76	340	MOH Reporting
	Kyantungo HC IV	HC IV	MILDMAY, MOH	317	155	10	165	MOH Reporting
	Mwera HC IV	HC IV	MOH	148	144	2	146	MOH Reporting



District	ART Service outlet:	Level	Implementing Partner(s)	Cumulative No on ART	No. Adults on ART	No. Children on ART	Total No. on ART	Source of data
Mpigi	Tamteco-Mityana	Clinic	PART/HIPS	128	ND	ND	101	HIPS
	Nkozi Hospital	Hospital	AIDS Relief, MOH	857	575	60	635	MOH Reporting
	Fiduga Clinic	Clinic	PART/HIPS	47	ND	ND	45	HIPS
	Buwama HC III	HC III	MILDMAY, MOH	786	349	41	390	MOH Reporting
	Mpigi HC IV	HC IV	JCRC, MOH	1527	1210	82	1292	MOH Reporting
Butambala	Gombe Hospital	Hospital	JCRC, MOH	1647	1165	87	1252	MOH Reporting
Gomba	Maddu HC IV	HC IV	MOH	292	253	10	263	MOH Reporting
Mukono	Nagalama	Hospital	MILDMAY, MOH	1424	1142	83	1225	MOH Reporting/CDC
	Kojja HC IV	HC IV	Walter Reed, MOH	263	12	12	24	MOH Reporting
	Mukono COU HC	HC IV	MILDMAY, MOH	619	393	61	454	MOH Reporting/CDC
	Mukono HC	HC IV	MOH	258	194	10	204	MOH Reporting
	Kyetume Static ce	HC III	IRCU	482	326	7	333	IRCU
	Royal VanZan Ten	Clinic	PART/HIPS, MOH	29	29	0	29	MOH Reporting
	Family Hope Cent	AIDS Clinic	AIDS RELIEF	2460	1738	158	1896	MOH Reporting
Buvuma	Buvuma	HC IV	MOH	60	52	1	53	MOH Reporting
Buikwe	Nile Breweries	Clinic	PART/HIPS, MOH	30	18	0	18	MOH Reporting
	St Francis Health Care Services	Clinic	IRCU	1112	ND	ND	1110	IRCU
	Nkonkojeru	Hospital	MOH, PIDC	253	202	4	206	MOH Reporting
	Nyenga Mobile	Hospital	AIDS Relief, MOH	572	434	55	489	MOH Reporting
	Kawolo Hospital	Hospital	JCRC, MOH	1234	935	53	988	MOH Reporting
	SCOUL MEHTA	Hospital	PART/HIPS, MOH	23	23	0	23	MOH Reporting
	Buikwe Hosp	Hosp	PIDC,MOH	224	146	25	171	MOH Reporting
Nakaseke	Kiwoko Hospital	Hospital	IRCU,MOH	1411	ND	ND	924	IRCU
	Nakaseke Hosp	Hospital	MOH	299	210	0	210	MOH Reporting
Wakiso	TASO Entebbe	AIDS Clinic	TASO	3495	2884	83	2967	CDC
	Medical Res Coun	AIDS Clinic	JCRC	837	772	14	786	JCRC
	Entebbe Grade B.	Hospital	MOH	837	1203	6	1209	MOH Reporting
	Kisubi Hospital	Hospital	MOH	ND	ND	ND	ND	
	Katabi Hospital	Hospital	DOD, MOH	471	455	5	460	MOH Reporting
	Saidina Abubaker	Hospital	IRCU,MOH	928	639	10	649	MOH Reporting
	Buwambo HC IV	HC IV	MOH	201	72	5	78	MOH Reporting
	Namayumba HC	HC IV	MOH	ND	ND	ND	ND	
	Ndejje HC IV	HC IV	MOH	176	106	3	109	MOH Reporting
	Wakiso HC IV	HC IV	MOH	269	ND	ND	269	
	Mildmay Hospital	AIDS Clinic	MILDMAY, MOH	9455	5156	1143	6299	MOH Reporting
	Wagagai Clinic	Clinic	PART/HIPS, MOH	81	ND	ND	70	HIPS
	Kabubu	HC II	MILDMAY, MOH	43	20	1	21	MOH Reporting
	Namugongo Child	Clinic	JCRC	171	106	20	126	JCRC
	Touch Namuwon	Clinic	PART/HIPS, MOH	45	32	0	32	MOH Reporting
	Roofing facility	Clinic	PART/HIPS, MOH	16	ND	ND	10	MOH Reporting
	Kakiri 1st Div Mil	Hosp	DOD, MOH	100	169	5	174	MOH Reporting
	MasaJja Nursing	Clinic	PART/HIPS	4	ND	ND	4	March Report
	Tropical Clinic	Clinic	PART/HIPS, MOH	104	ND	ND	44	HIPS
<b>Fortportal Region</b>								
<b>Bundibugyo</b>								
	Bundibugyo	Hospital	MOH	428	277	15	292	MOH Reporting
	Nyahuka HC IV	HC IV	MOH	256	152	9	161	MOH Reporting
Ntoroko								
<b>Kabarole</b>								
	Fortportal RRH	RRH	JCRC, MOH	4542	2726	359	3085	JCRC
	Kabarole Hospital	Hospital	AIDS Relief, MOH	1383	991	170	1161	MOH Reporting

District	ART Service outlet:	Level	Implementing Partner(s)	Cumulative No on ART	No. Adults on ART	No. Children on ART	Total No. on ART	Source of data
	Virika Hospital	Hospital	AIDS Relief, MOH	2464	1851	232	2083	MOH Reporting
	Bukuuku HC IV	HC IV	MOH	207	137	5	142	MOH Reporting
	Kijura HC III	HC IV	MOH	85	85	0	85	MOH Reporting
	Kibito HC IV	HC IV	MOH	593	201	6	207	MOH Reporting
	Kiyombya HC III	HC III	MOH	90	89	0	89	MOH Reporting
	Yerya HC	HC III	MOH	236	179	8	187	MOH Reporting
	Kaswa HC III	HC III	MOH	90	78	0	78	MOH Reporting
	Rutete HC III	HC III	MOH	48	45	3	48	MOH Reporting
	Kisomoro HC III	HC III	MOH	78	62	0	62	MOH Reporting
	Rwimi HC III	HC III	MOH	465	417	7	424	MOH Reporting
Kiko James Finlays	Clinic	PART/HIPS	9	ND	N	6	HIPS	
Tam Toro Kahuna	Clinic	PART/HIPS	180	ND	ND	107	MOH Reporting	
<b>Kamwenge</b>								
	Rukunyu HC	HC IV	PIDC, MOH	738	419	30	449	MOH Reporting
	Ntara HC IV	HC IV	MILDMAY, MOH	406	295	12	307	MOH Reporting
<b>Kasese</b>								
	Bwera Hospital	Hospital	PIDC, MOH	779	426	57	483	MOH Reporting/PIDC
	Kilembe Hospital	Hospital	PIDC, IRCU, MOH	1649	852	158	1010	MOH Reporting
	Kagando Hospital	Hospital	JCRC, MOH	482	272	33	305	JCRC
	Kasanga PHC	HC III	AIDS RELIEF	643	458	43	501	MOH Reporting
	St Paul' HC	HC III	JCRC	629	406	16	422	JCRC
	Kasese Cob Comp	Clinic	PART/HIPS, MOH	142	112	1	113	MOH Reporting
	Micro care Hima	Clinic	PART/HIPS, MOH	340	169	6	175	MoH Reporting
	Cement Fac							
<b>Kyenjojo</b>								
	Kyarusenzi HC IV	HC IV	PIDC, MOH	334	276	26	302	MOH Reporting
	Kyenjojo HC IV	HC IV	PIDC, MOH	1650	1202	79	1281	MOH Reporting
	Tamteco-Kiamara	Clinic	PART/HIPS	ND	ND	ND	ND	
	Mwenge Finlay U	Clinic	PART/HIPS, MOH	184	165	10	175	MOH Reporting
<b>Kyegegwa</b>								
	Kyegegwa HC IV	HC IV	PIDC, MOH	609	372	38	410	MOH Reporting
<b>Gulu Region</b>								
<b>Amuru</b>								
	Atiak HC IV	HC IV	MoH, NUMAT, PIDC	215	153	12	165	MOH Reporting
	Pabbo	HC III	MOH, NUMAT	84	58	5	63	MOH Reporting
<b>Nwoya</b>								
	Anaka Hospital	Hospital	MoH, NUMAT, PIDC	514	301	20	321	MOH Reporting
	Koch Goma	HC III	MoH, NUMAT, PIDC	112	88	8	96	MOH Reporting
<b>Gulu</b>								
	TASO Gulu	AIDS Clinic	TASO	3285	2739	188	2927	CDC
	Gulu RRH	RRH	JCRC, MOH	1980	1417	166	1583	MOH Reporting
	Gulu Indep Hosp	Hospital	MOH	ND	ND	ND	ND	
	Gulu Mil 4th divis	Hospital	JCRC, DOD, MOH	951	775	4	779	JCRC
	Lacor Hospital	Hospital	AIDS RELIEF, MOH	4260	3019	313	3332	MOH Reporting
	Bobo HC III	HC III	MOH, NUMAT, PIDC	98	29	0	29	MOH Reporting
	Awach Hc IV	HC IV	MoH, NUMAT, PIDC	156	126	17	143	MOH Reporting
	Lalogi HC IV	HC IV	MOH, PIDC	541	252	23	275	PIDC
<b>Kitgum</b>								
	St Joseph Kitgum	Hospital	AIDS RELIEF	1667	1324	170	1494	MOH Reporting
	Madiopei	HC IV	MSF	256	230	26	256	MOH Reporting
	Namokora	HC IV	NUMAT, PIDC, MoH	198	175	21	196	MOH Reporting
	Kitgum Hospital	Hospital	NUMAT, PIDC, MoH	1404	979	108	1087	CDC
<b>Lamwo</b>								
	Pala Ber Kal HC	HC III	NUMAT, MOH	107	36	3	39	MOH Reporting
	Padibe HC IV	HC IV	NUMAT, PIDC, MOH	384	354	30	384	MOH Reporting
<b>Pader</b>								
	5th Div Acholi PII	Hospital	DOD, MOH	420	420	0	420	MOH Reporting
	Pajule HC IV	HC IV	NUMAT, PIDC, MoH	313	234	3	237	MOH Reporting
	Atanga	HC III	NUMAT, MOH	121	116	5	121	MOH Reporting
	Pader HC III	HC III	NUMAT, MoH	149	150	6	156	MOH Reporting

District	ART Service outlet:	Level	Implementing Partner(s)	Cumulative No on ART	No. Adults on ART	No. Children on ART	Total No. on ART	Source of data
<b>Agago</b>								
	Kalongo Hospital	Hospital	AIDS Relief, MOH	889	679	78	757	MOH Reporting
	Patongo HC IV	HC IV	MOH	ND	ND	ND	ND	
<b>Hoima Region</b>								
<b>Hoima</b>								
	Finlays-Bagambe	Clinic	PART/ HIPS, MOH	324	ND	N	298	HIPS
	Finlays- Kisaku	Clinic	PART / HIPS	6	ND	N	6	March Data
	Kyangwali	HC III	MOH	62	62	13	75	MOH Reporting
	Kabalega Med Ce	Clinic	PART/ HIPS, MOH	84	39	0	39	MOH Reporting
	Hoima RRH	RRH	JCRC, MOH	2511	2357	206	2563	MOH Reporting
	Kikuube HC IV	HC IV	MOH	242	238	3	241	MOH Reporting
	Kyehoro HC	Clinic	HIPS	27	32	0	32	MOH Reporting
<b>Kibaale</b>								
	Kagadi Hospital	Hospital	PIDC, IDI, MOH	1059	649	61	710	March Report
	Kakumiro HC IV	HC IV	PIDC, IDI, MOH	251	193	19	212	MOH Reporting
	Kakindo HC IV	HC IV	PIDC, IDI, MOH	261	121	3	124	MOH Reporting
	Kibaale HC IV	HC IV	PIDC, IDI, MOH	262	144	15	159	MOH Reporting
<b>Kiboga</b>								
	Kiboga Hospital	Hospital	JCRC, IDI, MOH	531	493	38	531	JCRC
	Bukomero	HC IV	PIDC, IDI, MOH	141	126	6	132	MOH Reporting
	Ntwetwe HC IV	HC IV	PIDC, IDI, MOH	362	182	27	209	MOH Reporting
<b>Buliisa</b>								
	Buliisa	HC IV	MOH, PIDC	67	46	5	51	MOH Reporting
<b>Kyankwanzi</b>								
<b>Masindi</b>								
	TASO Masindi	AIDS Clinic	TASO	2403	1861	103	1964	CDC
	Masindi Hospital	Hospital	JCRC, MOH	643	405	19	424	MOH Reporting
	Bwijanga HC IV	HC IV	PIDC, TASO, MOH	82	52	2	54	MOH Reporting
	Kinyara Sugar Works Clin	Clinic	PART/HIPS, MOH	64	72	1	73	MOH Reporting
<b>Kiryandongo</b>								
	Kiryandongo	Hospital	PIDC, TASO, MOH	531	272	33	305	MOH Reporting
<b>Mubende</b>								
	MRC Milit Hosp	Hospital	DOD,MOH	75	ND	ND	73	March data
	Mubende RRH	RRH	JCRC, MOH	3185	2366	220	2586	JCRC
	People' Clinic Kasanda	Clinic	PART/HIPS, MOH	25	24	0	24	MOH Reporting
<b>Nakasongola</b>								
	Nakasongola Mili	Hospital	DOD, MOH	1174	ND	ND	572	Calling
	Luwero Indust Lt	Clinic	PART/HIPS, MOH	76	ND	ND	69	HIPS
	Nakasongola HC	HC IV	MOH	326	232	32	264	MOH Reporting
<b>Jinja Region</b>								
<b>Bugiri</b>								
	Bugiri Hospital	Hospital	MOH,PIDC, STAR EC	619	239	8	247	MOH Reporting
	Nankoma HC IV	HC IV	MOH, STAR EC	57	62	3	65	MOH Reporting
	Banda HC III	HC III	MOH, STAR EC	4	4	0	4	MOH Reporting
<b>Namayingo</b>								
	Buyinja HC	HC IV	MOH,PIDC, STAR EC	288	132	11	143	MOH Reporting
	Sigulu	HC III	MOH, STAR EC	1	1	0	1	MOH Reporting
<b>Iganga</b>								
	Iganga Hospital	Hospital	MOH, STAR EC	894	497	41	538	MOH Reporting
	Busesa	HC IV	MOH, STAR EC	208	137	8	145	MOH Reporting
	Bugono HC IV	HC IV	MOH, STAR EC	55	39	3	42	MOH Reporting
	Namungalwe HC	HC III	MOH, STAR EC	113	54	3	57	MOH Reporting
	Busembatia	HC III	MOH, STAR EC	4	4	0	4	MOH Reporting
<b>Luuka</b>								
	Kiyunga HC IV	HC IV	MOH, STAR EC	185	146	11	157	MOH Reporting
<b>Jinja</b>								
	TASO Jinja	AIDS Clinic	TASO	4444	3247	124	3371	MOH Reporting
	Jinja Reg Ref Hosp	RRH	JCRC, MOH	1274	688	196	884	MOH Reporting
	Kakira JCRC RCO	AIDS Clinic	JCRC	1767	735	131	866	JCRC
	Kakira Hospital	Hospital	PART/HIPS, MOH	157	12	0	12	MOH Reporting

District	ART Service outlet:	Level	Implementing Partner(s)	Cumulative No on ART	No. Adults on ART	No. Children on ART	Total No. on ART	Source of data	
Kaliro	Buenge HC IV	HC IV	MOH	279	153	5	158	MOH Reporting	
	Budondo HC IV	HC IV	MOH	95	55	1	56	MOH Reporting	
	Bugembe HC IV	HC IV	MOH	147	78	3	81	MOH Reporting	
	Walukuba HC IV	HC IV	MOH	203	91	0	91	MOH Reporting	
	Mpumudde HC	HC IV	MOH	115	168	0	168	MOH Reporting	
	Intern Med Cent	Clinic	PART/HIPS, MOH	21	ND	ND	10	HIPS	
	Nytil Picfare	Clinic	PART/HIPS, MOH	16	ND	ND	3	HIPS	
Kamuli	Bumanya HC IV	HC IV	MOH, STAR EC	89	70	3	73	MOH Reporting	
	Nawaikoke HC III	HC III	MOH, STAR EC	29	5	0	5	MOH Reporting	
	Namugongo HC	HC III	MOH, STAR EC	4	5	1	6	MOH Reporting	
Buyende	Kamuli Hospital	Hospital	MoH, PIDC, STAR EC	793	278	24	302	MOH Reporting	
	Nankandulo HC	HC IV	MOH, STAR EC	9	6	1	7	MOH Reporting	
	Namwendwa HC	HC IV	MOH, STAR EC	29	26	3	29	MOH Reporting	
	Kamuli Miss Hosp	Hospital	MOH, STAR EC	418	221	6	227	MOH Reporting	
Mayuge	Kidera HC IV	HC IV	MOH, STAR EC	16	16	0	16	MOH Reporting	
Namutumba	Buluba Hospital	Hospital	IRCU, MOH	647	446	27	473	MOH Reporting	
	Kityerera HC IV	HC IV	MOH, STAR EC	66	44	4	48	MOH Reporting	
	Kigandalo HC	HC IV	MOH, STAR EC	146	100	6	106	MOH Reporting	
	Mayuge HC	HC III	MOH, STAR EC	20	3	2	5	MOH Reporting	
	Wabulungu	HC III	MOH, STAR EC	5	5	0	5	MOH Reporting	
Kabale Region	Nsinze HC IV	HC IV	MOH, STAR EC	175	149	7	156	MOH Reporting	
	Namutumba	HC III	MOH, STAR EC	107	90	17	107	MOH Reporting	
	Ivukula	HC III	MOH, STAR EC	40	34	4	38	MOH Reporting	
	Bulange	HC III	MOH, STAR EC	2	14	0	14	MOH Reporting	
Kabale	Kabale RRH	RRH	JCRC, MOH	2947	2051	207	2258	MOH Reporting	
	Kigezi H Care Fou	Hospital	MOH	674	492	7	499	MOH Reporting	
	Hamurwa HC	HC IV	MOH, PIDC	152	131	20	151	MOH Reporting	
	Mparo	HC IV	MOH, PIDC	198	134	8	142	MOH Reporting	
	Muko	HC IV	MOH	105	96	4	100	MOH Reporting	
	Rubaya	HC IV	MOH, PIDC	63	37	4	41	MOH Reporting	
	Maziba	HC IV	MOH	60	45	0	45	MOH Reporting	
	Iruhura	HC III	MOH	ND	ND	ND	ND		
	Rugarama HC	HC IV	MOH	302	255	8	263	MOH Reporting	
	Bukinda HC IV	HC IV	MOH, PIDC	282	201	21	222	MOH Reporting	
	Kamwezi HC	HC IV	MOH	227	51	7	58	MOH Reporting	
	Kanungu	Kambuga Hosp	Hospital	JCRC, MOH	402	406	10	416	MOH Reporting
		Kinkinzi Hospital	Hospital	PART/HIPS	504	270	18	288	MOH Reporting
		Kihihi HC IV	HC IV	PIDC, MOH	269	238	28	266	MOH Reporting
Bwindi Comm		HC III	JCRC	538	281	26	307	MOH Reporting	
Kisoro	Kisoro Hospital	Hospital	JCRC, MOH	632	484	42	526	JCRC	
	Mutolere Hospital	Hospital	MOH	243	151	11	162	MOH Reporting	
Rukungiri	TASO Rukungiri	AIDS Clinic	TASO	3863	2515	168	2683	CDC	
	Kisiizi Hospital	Hospital	JCRC, MOH	964	479	79	558	MOH Reporting	
	Nyakibale Hosp	Hospital	JCRC, MOH	983	574	68	642	MOH Reporting	
<b>Lira Region</b>									
Amolatar	Amal Community	Hospital	AIDS Relief, MOH	662	491	33	524	MOH Reporting	
	Amolatar HC IV	HC IV	MOH, PIDC, NUMAT	391	242	21	263	MOH Reporting	
	Etam HC III	HC III	NUMAT, MOH	43	19	4	23	MOH Reporting	
	Namasale	HC III	MOH, PIDC, NUMAT	127	119	8	127	MOH Reporting	
Apac	Apac Hospital	Hospital	MOH	1582	1427	118	1545	MOH Reporting	
	Aduku HC IV	HC IV	MOH, PIDC, NUMAT	472	384	85	469	MOH Reporting	

District	ART Service outlet:	Level	Implementing Partner(s)	Cumulative No on ART	No. Adults on ART	No. Children on ART	Total No. on ART	Source of data
Kole	Akokoro	HC III	MOH,PIDC, NUMAT	185	192	12	204	MOH Reporting
	Aboke HC IV	HC IV	MoH, PIDC, NUMAT	623	540	42	582	MOH Reporting
Dokolo	Bala	HC III	MoH, PIDC, NUMAT	186	161	11	172	MOH Reporting
	Dokolo HC	HC IV	MoH, NUMAT, PIDC	831	762	50	812	MOH Reporting
	Kwera	HC III	NUMAT, MOH	151	134	9	143	MOH Reporting
	Batta	HC II	NUMAT, MOH	200	184	14	198	MOH Reporting
Lira	Agwata	HC III	NUMAT, MOH	2	12	0	12	MOH Reporting
	Lira RRH	RRH	JCRC, NUMAT, MOH	4335	1627	32	1659	MOH Reporting
	Ogur HC IV	HC IV	MoH, NUMAT, PIDC	497	371	23	394	MOH Reporting
	Pag Mission	HC IV	MoH, NUMAT, PIDC	220	164	9	173	PIDC
	Amach HC IV	HC IV	MoH, NUMAT, PIDC	902	707	81	788	MOH Reporting
	Barr HC III	HC III	MoH, NUMAT, PIDC	39	32	7	39	PIDC
	Lira Medical Cen	Clinic	MOH	539	333	16	349	MOH Reporting
	Ayira Med Cent	Clinic	PART/HIPS	10	ND	ND	10	HIPS
Otuke	Charis	Clinic	HIPS	46	ND	ND	37	HIPS
	Orum HC IV	HC IV	MOH, NUMAT, PIDC	429	408	10	418	MOH Reporting
Alebtong	Alebtong HC IV	HC IV	MoH, NUMAT, PIDC	652	516	39	555	MOH Reporting
Oyam	Aber Hospital	Hospital	AIDS Relief, MOH	753	589	58	647	MOH Reporting
	Otwal HC	HC III	MoH, NUMAT	280	264	16	280	NUMAT
	Agulurude	HC III	MoH, NUMAT	27	24	0	24	MOH Reporting
	Anyeke HC IV	HC IV	MoH, NUMAT, PIDC	971	389	34	423	MOH Reporting
<b>Masaka Region</b>								
Kalangala	Kalangala HC IV	HC IV	JCRC, MOH	638	452	34	486	MOH Reporting
Lyantonde	Lyantonde Hosp	Hospital	PIDC, MOH	998	454	35	489	MOH Reporting
	Lyantonde Islamic	HC IV	IRCU,MOH	379	351	8	359	MOH Reporting
Masaka	TASO Masaka	AIDS Clinic	TASO	3896	3217	277	3494	MOH Reporting
	Masaka RRH	RRH	Uganda Cares, MOH	6414	4647	463	5110	MOH Reporting
	Kyanamukaka	HC IV	MOH	53	115	21	136	MOH Reporting
	Kiyumba HC	HC IV	MOH	90	90	1	91	MOH Reporting
	Kinoni HC III	HC III	MOH	170	155	7	162	MOH Reporting
	AID Child	Clinic	MOH	56	18	36	54	MOH Reporting
	Kiwangala HC IV	HC IV	MOH	172	132	10	142	MOH Reporting
	Kyazanga HC IV	HC IV	MOH	62	41	0	41	MOH Reporting
	Kitovu Mobile	AIDS Clinic	MOH	1227	1036	37	1073	MOH Reporting
	Lambu	Clinic	PART/HIPS	17	17	1	18	MOH Reporting
	Bukomansibi							
Butenga HC IV		HC IV	MOH	106	77	8	85	MOH Reporting
Lwengo	Lwengo HC IV	HC IV	MoH	76	82	1	83	MOH Reporting
Kalungu	Villa Maria Hosp	Hospital	AIDS Relief, MOH	2388	1731	211	1942	MOH Reporting
	Bukulula HC IV	HC IV	MOH	281	228	39	267	MOH Reporting
	Kalungu HC IV	HC IV	MOH	74	53	4	57	MOH Reporting
	Kyamulibwa HC	HC IV	MOH	136	56	3	59	MOH Reporting
	MRC Kyamulibwa	AIDS Clinic	MOH	373	274	30	304	MOH Reporting
Rakai	Kalisizo Hospital	Hospital	MOH	1354	1157	38	1195	MOH Reporting
	Rakai Hospital	Hospital	MOH	1333	906	34	940	MOH Reporting
	Kakuuto HC IV	HC IV	MOH	973	809	41	850	MOH Reporting
	Kyotera Med Cen	Clinic	PART/HIPS	39	35	1	36	MOH Reporting
	Rakai Heal Sc Proj	AIDS Clinic	IPH,	2350	2105	124	2229	CDC
Ssembabule								

District	ART Service outlet:	Level	Implementing Partner(s)	Cumulative No on ART	No. Adults on ART	No. Children on ART	Total No. on ART	Source of data
	Ntuusi	HC IV	MOH	108	42	0	42	MOH Reporting
	Mataate HC IV	HC IV	MOH	454	352	12	364	MOH Reporting
	Sembabule HC	HC IV	MOH	366	225	4	229	MOH Reporting
<b>Mbale Region</b>								
Bududa								
	Bududa	Hospital	MOH, PIDC	973	221	47	268	MOH Reporting
Bukwa								
	Bukwa HC IV	HC IV	MOH, STAR E	40	39	1	40	MOH Reporting
Busia								
	Busia HC	HC IV	MOH, PIDC, STAR E	130	45	4	49	MOH Reporting
	Dabani Hospital	Hospital	MOH, PIDC, STAR E	21	21	2	23	MOH Reporting
	Masafu HC IV	HC IV	MOH, PIDC, STAR E	675	507	49	556	MOH Reporting
Budaka								
	Budaka HC IV	HC IV	MOH, PIDC, STAR E	161	122	15	137	MOH Reporting
Butaleja								
	Busolwe Hospital	Hospital	MOH, PIDC, STAR E	514	322	25	347	MOH Reporting
Kapchorwa								
	Kapchorwa	Hospital	MOH, STAR E	366	334	0	334	MOH Reporting/ STAR E
Kween								
Manafwa								
	Magale HC IV	HC IV	MOH, PIDC	344	196	30	226	MOH Reporting
Mbale								
	Mbale RRH	RRH	JCRC, MOH	5702	2458	327	2785	JCRC
	TASO Mbale	AIDS Clinic	TASO	4062	3022	247	3269	CDC/ MOH
	Busiu HC IV	HC IV	MOH	49	38	5	43	MOH Reporting
Pallisa								
	Butembo	HC IV	MOH, STAR E	67	43	2	45	MOH Reporting
	Pallisa Hospital	Hospital	MOH, PIDC, STAR E	558	385	56	441	MOH Reporting
Kibuku								
	Kibuku HC IV	HC IV	MOH, PIDC, STAR E	186	132	18	150	MOH Reporting
Sironko								
	Budadiri HC IV	HC IV	MOH, PIDC, STAR E	321	166	6	172	MOH Reporting
Bulambuli								
	Muyembe HC IV	HC IV	MOH, PIDC, STAR E	243	285	9	294	MOH Reporting
Tororo								
	TASO Tororo	AIDS Clinic	TASO	4018	3608	201	3809	MOH Reporting
	St. Anthony	Hospital	MOH	52	43	0	43	MOH Reporting
	Tororo Hospital	Hospital	MOH	635	1150	64	1214	MOH Reporting
	Rubongi Mili	Hospital	DOD,MOH	349	197	2	199	MOH Reporting
	Mukuju HC IV	HC IV	JCRC, MOH	471	383	83	466	MOH Reporting
	Mulanda HC IV	HC IV	PIDC, MOH	116	83	9	92	MOH Reporting
<b>Mbarara District</b>								
Bushenyi								
	Ishaka Hospital	Hospital	JCRC, MOH	1522	1153	49	1202	MOH Reporting
	Comboni Hospital	Hospital	AIDS Relief, MOH	1511	1178	94	1272	MOH Reporting
	Katungu Med Cen	HC III	AIDS Relief	1785	1336	107	1443	MOH Reporting
	Finlays Ankole	Clinic	PART/HIPS	14	14	0	14	MOH Reporting
Rubiziri								
	Rugazi HC	HC IV	MOH	99	93	6	99	MOH Reporting
Buhweju								
Mitooma								
Sheema								
	Kitagata Hospital	Hospital	JCRC, MOH	1037	770	39	809	MOH Reporting
	Kabwohe Med Ce	HC IV	AIDS Relief	2277	1635	133	1768	MOH Reporting
Ibanda								
	Ibanda Hospital	Hospital	JCRC, MOH	726	464	38	502	MOH Reporting
	Ishongororo	HC IV	MOH	30	17	1	18	MOH Reporting
	Ruhoro HC	HC IV	MOH	3	3	0	3	MOH Reporting

District	ART Service outlet:	Level	Implementing Partner(s)	Cumulative No on ART	No. Adults on ART	No. Children on ART	Total No. on ART	Source of data
Isingiro								
Kiruhura	Kabuyanda HC IV	HC IV	MOH	ND	ND	ND	ND	
Mbarara	Rushere Hospital	Hospital	JCRC, MOH	575	544	20	564	MOH Reporting
	TASO Mbarara	AIDS Clinic	TASO	4002	2899	134	3033	MOH Reporting
	Mbarara ISS	RRH	JCRC, MJAP, MOH	9540	5385	399	5784	MOH Reporting
	Mbarara TB/HIV	AIDS Clinic	MJAP, MOH	60	84	0	84	MOH Reporting
	Mbarara Com Ho	Hospital	MOH	359	158	5	163	MOH Reporting
	UPDF, 2ND DIVI	Hospital	DOD,MOH	259	208	1	209	MOH Reporting
	Mbarara Mun Cou	HC IV	MJAP, MOH	2563	1804	85	1889	MOH Reporting
	Bwizibwera HC	HC IV	MJAP, MOH	1754	1259	107	1366	MOH Reporting
	Kinoni HC	HC III	MOH	33	33	2	35	MOH Reporting
	Mayanja Me Nur	Clinic	PART/HIPS, MOH	463	150	2	152	MOH Reporting
Ntungamo								
	Itojo Hospital	Hospital	JCRC, MOH	1362	897	50	947	MOH Reporting
	Rwashamire HC	HC IV	PIDC, MOH	145	77	23	100	MOH Reporting
	Rubaare HC	HC IV	PIDC, MOH	236	180	45	225	MOH Reporting
	Kitwe HC IV	HC IV	JCRC, MOH	379	284	5	289	MOH Reporting
<b>Moroto Regio</b>								
Abim								
	Abim Hospital	Hospital	MOH	190	199	15	214	MOH Reporting
Kaabong								
	Kaabong Hospital	Hospital	JCRC, MOH	278	116	8	124	MOH Reporting
Moroto								
	Moroto Mili HC III	HC III	DOD,MOH	8	33	0	33	March data
	Moroto RRH	RRH	MOH	78	90	5	95	MOH Reporting
Napak								
	St. Kizito - Matany	Hospital	MOH	296	185	12	197	MOH Reporting
Nakapiripirit								
	Tokora HC	HC IV	MOH	37	16	1	17	March data
	Nakapiripirit	Hospital	MOH	6	3	3	6	March data
Kotido								
	Kotido COU HC III	HC III	IRCU	18	18	0	18	MOH Reporting
Amudat								
	Amudat	Hospital	MOH	11	7	2	9	MOH Reporting
<b>Soroti Region</b>								
Soroti								
	TASO Soroti	AIDS Clinic	TASO	3234	2777	270	3047	CDC
	Soroti RRH	AIDS Clinic	Uganda Cares, MOH	3687	2628	19	2647	MOH Reporting
	Soroti RRH	RRH	JCRC, MOH	445	110	157	267	MOH Reporting
Amuria								
	Amuria HC IV	HC IV	MOH,PIDC	205	200	19	219	MOH reporting
	Kaperebyong	HC IV	MOH, PIDC	19	14	5	19	March data
Kaberamaido								
	Lwala Hospital	Hospital	PIDC, MOH	430	261	47	308	CDC
	Kaberamaido HC	HC IV	PIDC, MOH	831	429	87	516	CDC
Katakwi								
	Katakwi HC IV	HC IV	JCRC, MOH, TASO	686	425	24	449	JCRC
Kumi								
	Atatur Hospital	Hospital	PIDC, MOH	795	864	46	910	MOH Reporting
	Kumi Hospital	Hospital	PIDC, IRCU,MOH	656	454	42	496	PIDC
Ngora								
	Ngora Hospital	Hospital	JCRC, MOH	815	529	25	554	JCRC
Bukedea								
	Bukedea	HC IV	MOH	20	19	1	20	MOH Reporting
Serere								
	Serere HC IV	HC IV	PIDC, MOH	230	96	42	138	MOH Reporting/PIDC
<b>TOTAL</b>							<b>236,925</b>	

ND: No data or no Report

## Annex 2: ART Outcomes

District	Facility	6 months treatment outcomes						12 months treatment outcomes						24 months treatment outcomes					
		No. started	% alive on Rx	% LTFU	% Dead	% stopped Rx	Lost	No. started	% alive on Rx	% LTFU	% Dead	% stopped Rx at	Lost	No. started	% alive on Rx	% LTFU	% Dead	% stop Rx	Lost
<b>Arua Region</b>																			
<b>Adjumani</b>																			
Arua	Adjumani Hosp	ND	ND	ND	ND	ND	ND	ND	ND	ND	ND	ND	ND	ND	ND	ND	ND	ND	ND
	Arua RRH	ND	ND	ND	ND	ND	ND	ND	ND	ND	ND	ND	ND	ND	ND	ND	ND	ND	ND
Koboko	Kuluva Hosp	30	80	3	17	0	0	52	100	0	0	0	0	12	100	0	0	0	0
	Koboko HC IV	ND	ND	ND	ND	ND	ND	ND	ND	ND	ND	ND	ND	ND	ND	ND	ND	ND	ND
Moyo	Moyo Hosp	ND	ND	ND	ND	ND	ND	ND	ND	ND	ND	ND	ND	ND	ND	ND	ND	ND	ND
Nebbi	Nebbi Hosp	ND	ND	ND	ND	ND	ND	ND	ND	ND	ND	ND	ND	ND	ND	ND	ND	ND	ND
	Angal Hosp	16	100	0	0	0	0	30	96.7	0	3.3	0	0	74	90.4	0	4.1	1.4	4.1
Zombo	Pakwach HC IV	ND	ND	ND	ND	ND	ND	ND	ND	ND	ND	ND	ND	ND	ND	ND	ND	ND	ND
	Nyapea Hosp	ND	ND	ND	ND	ND	ND	ND	ND	ND	ND	ND	ND	ND	ND	ND	ND	ND	ND
Nyadri	Maracha Hos	6	33.3	33.3	33.3	0.0	0.0	5	40.0	20.0	0.0	20.0	20.0	8	0.0	37.5	25.0	0	12.5
Yumbe	Yumbe Hosp	2	100	0	0	0	0	14	100	0	0	0	0	3	0	0	100	0	0
	Midigo HC IV	1	100	0	0	0	0	1	0	100	0	0	0	2	0	50	50	0	0
Total for the Region		54	81.5	5.5	13.0	0.0	0.0	102	95.1	2.0	1.0	1.0	1.0	99	81.8	4.0	9.1	1.0	4.0
<b>Kampala Region</b>																			
<b>Kampala</b>																			
	TASO Kanyanya	ND	ND	ND	ND	ND	ND	ND	ND	ND	ND	ND	ND	ND	ND	ND	ND	ND	ND
	TASO Mulago	29	86.2	10.3	3.4	0	0	335	80.3	18.8	0.3	0.6	0	ND	ND	ND	ND	ND	ND
	Mulago CDC	ND	ND	ND	ND	ND	ND	ND	ND	ND	ND	ND	ND	ND	ND	ND	ND	ND	ND
	Mujhu Resea Co	390	90	7.7	1.8	0.5	0	476	87.4	6.5	5.9	0.2	0	ND	ND	ND	ND	ND	ND
	Mulago ISS NRH	47	97.9	2.1	0	0	0	47	57.4	23.4	19.1	0	0	ND	ND	ND	ND	ND	ND
	Mulago TB-HIV	5	80	20	0	0	0	19	89.5	10.5	0	0	0	ND	ND	ND	ND	ND	ND
	Post Natal Clinic	262	86.6	12.6	0.4	0.4	0	372	86.0	12.9	1.1	0	0	ND	ND	ND	ND	ND	ND
	Infect Dis Instit	390	90	7.7	1.8	0.5	0	476	87.4	6.5	5.9	0.2	0	ND	ND	ND	ND	ND	ND
	Kampala Dispen	ND	ND	ND	ND	ND	ND	ND	ND	ND	ND	ND	ND	ND	ND	ND	ND	ND	ND
	PIDC Ward 15	88	97.7	1.1	1.1	0	0	102	97.1	1.0	2.0	0	0	ND	ND	ND	ND	ND	ND
	Butabika NRH	ND	ND	ND	ND	ND	ND	ND	ND	ND	ND	ND	ND	ND	ND	ND	ND	ND	ND
	Makerere Univ	ND	ND	ND	ND	ND	ND	ND	ND	ND	ND	ND	ND	ND	ND	ND	ND	ND	ND
	Mengo Hospital	ND	ND	ND	ND	ND	ND	ND	ND	ND	ND	ND	ND	ND	ND	ND	ND	ND	ND
	Namungoona Hosp	ND	ND	ND	ND	ND	ND	ND	ND	ND	ND	ND	ND	ND	ND	ND	ND	ND	ND
	Rubaga Hospital	82	87.8	2.4	0	3.7	6.1	98	85.7	13.3	1.0	0	0	70	77.1	21.5	1.4	0	0
	Internat Hosp	ND	ND	ND	ND	ND	ND	ND	ND	ND	ND	ND	ND	ND	ND	ND	ND	ND	ND
	Kibuli Hospital	ND	ND	ND	ND	ND	ND	ND	ND	ND	ND	ND	ND	ND	ND	ND	ND	ND	ND
	Nsambya Home Care	ND	ND	ND	ND	ND	ND	ND	ND	ND	ND	ND	ND	ND	ND	ND	ND	ND	ND
	Nsambya MTCT	ND	ND	ND	ND	ND	ND	ND	ND	ND	ND	ND	ND	ND	ND	ND	ND	ND	ND
	Nsambya Pol Ho	ND	ND	ND	ND	ND	ND	ND	ND	ND	ND	ND	ND	ND	ND	ND	ND	ND	ND
	Nsambya Priv	ND	ND	ND	ND	ND	ND	ND	ND	ND	ND	ND	ND	ND	ND	ND	ND	ND	ND
	Nsambya Gen Cl	ND	ND	ND	ND	ND	ND	ND	ND	ND	ND	ND	ND	ND	ND	ND	ND	ND	ND
	Gen Mil Mbuya	9	22.2	55.6	22.2	0	0	19	47.4	42.1	10.5	0	0	ND	ND	ND	ND	ND	ND



District	Facility	6 months treatment outcomes					12 months treatment outcomes					24 months treatment outcomes							
		No. started	% alive on Rx	% LTFU	% Dead	% stopped Rx	Lost	No. started	% alive on Rx	% LTFU	% Dead	% stopped Rx at	Lost	No. started	% alive on Rx	% LTFU	% Dead	% stop Rx	Lost
	Murchison Bay Hos	ND	ND	ND	ND	ND	ND	ND	ND	ND	ND	ND	ND	ND	ND	ND	ND	ND	ND
	Kisenyi HC IV	51	98.0	0.0	2.0	0.0	0.0	67	100	0	0	0	0	ND	ND	ND	ND	ND	ND
	Kawempe Home Car	34	64.7	8.8	5.9	0.0	20.6	ND	ND	ND	ND	ND	ND	ND	ND	ND	ND	ND	ND
	Kawempe HC IV	99	88.9	10.1	1.0	0.0	0.0	96	86.5	9.4	4.2	0	0	ND	ND	ND	ND	ND	ND
	Kyadondo Med Ce	ND	ND	ND	ND	ND	ND	ND	ND	ND	ND	ND	ND	ND	ND	ND	ND	ND	ND
	Kyambogo Uni	ND	ND	ND	ND	ND	ND	ND	ND	ND	ND	ND	ND	ND	ND	ND	ND	ND	ND
	Naguru HC IV	110	87.3	12.7	0.0	0.0	0.0	68	82.4	11.8	2.9	2.9	0	ND	ND	ND	ND	ND	ND
	Kitebi HC III (MJAP)	49	94	6	0	0	0	56	98.2	0.0	1.8	0.0	0	ND	ND	ND	ND	ND	ND
	Kitebi HC III (PIDC)	20	100.0	0.0	0.0	0.0	0.0	7	100.0	0.0	0.0	0.0	0.0	ND	ND	ND	ND	ND	ND
	Komamboga HC	14	92.9	0.0	7.1	0.0	0.0	73	84.6	7.7	7.7	0.0	0.0	ND	ND	ND	ND	ND	ND
	Kawaala HC III	49	95.9	4.1	0.0	0.0	0.0	11	91.8	8.2	0.0	0.0	0.0	ND	ND	ND	ND	ND	ND
	Kirudu HC III	37	97.3	2.7	0.0	0.0	0.0	65	100.0	0.0	0.0	0.0	0.0	ND	ND	ND	ND	ND	ND
	Kiruddu HC III (PIDC)	7	100.0	0.0	0.0	0.0	0.0	116	95.4	3.1	1.5	0.0	0.0	ND	ND	ND	ND	ND	ND
	Kiswa HC III (MJAP)	61	98.4	1.6	0.0	0.0	0.0	29	84.5	15.5	0.0	0.0	0.0	ND	ND	ND	ND	ND	ND
	Kiswa HC III (PIDC)	29	79.3	20.7	0.0	0.0	0.0	29	75.9	24.1	0.0	0.0	0.0	ND	ND	ND	ND	ND	ND
	JCRC	ND	ND	ND	ND	ND	ND	ND	ND	ND	ND	ND	ND	ND	ND	ND	ND	ND	ND
	Uganda Baati Cli	ND	ND	ND	ND	ND	ND	ND	ND	ND	ND	ND	ND	ND	ND	ND	ND	ND	ND
	St Catherines Clin	ND	ND	ND	ND	ND	ND	ND	ND	ND	ND	ND	ND	ND	ND	ND	ND	ND	ND
	Africa Air Rescue	ND	ND	ND	ND	ND	ND	ND	ND	ND	ND	ND	ND	ND	ND	ND	ND	ND	ND
	St Jos Wandegeya	ND	ND	ND	ND	ND	ND	ND	ND	ND	ND	ND	ND	ND	ND	ND	ND	ND	ND
	Bweyogerere	ND	ND	ND	ND	ND	ND	ND	ND	ND	ND	ND	ND	ND	ND	ND	ND	ND	ND
	Bank of Uganda	ND	ND	ND	ND	ND	ND	ND	ND	ND	ND	ND	ND	ND	ND	ND	ND	ND	ND
	Crane Health Serv	ND	ND	ND	ND	ND	ND	ND	ND	ND	ND	ND	ND	ND	ND	ND	ND	ND	ND
	Case Medical Cen	ND	ND	ND	ND	ND	ND	ND	ND	ND	ND	ND	ND	ND	ND	ND	ND	ND	ND
	White Horse Nurs	ND	ND	ND	ND	ND	ND	ND	ND	ND	ND	ND	ND	ND	ND	ND	ND	ND	ND
	Jumbo Corner Cli	ND	ND	ND	ND	ND	ND	ND	ND	ND	ND	ND	ND	ND	ND	ND	ND	ND	ND
	Kadic Med Cent	ND	ND	ND	ND	ND	ND	ND	ND	ND	ND	ND	ND	ND	ND	ND	ND	ND	ND
	Kamwokya CCC	50	90	0	8	2	0	60	90	1.7	5	3.3	0	150	71.3	3.3	10.7	14.7	0.0
	KIMS Med Cent	ND	ND	ND	ND	ND	ND	ND	ND	ND	ND	ND	ND	ND	ND	ND	ND	ND	ND
	SAS Foundat Clin	ND	ND	ND	ND	ND	ND	ND	ND	ND	ND	ND	ND	ND	ND	ND	ND	ND	ND
	The Surgery	ND	ND	ND	ND	ND	ND	ND	ND	ND	ND	ND	ND	ND	ND	ND	ND	ND	ND
	Victoria Med Cent	ND	ND	ND	ND	ND	ND	ND	ND	ND	ND	ND	ND	ND	ND	ND	ND	ND	ND
	Kitante Med Cent	ND	ND	ND	ND	ND	ND	ND	ND	ND	ND	ND	ND	ND	ND	ND	ND	ND	ND
	Ikan Clinic	ND	ND	ND	ND	ND	ND	ND	ND	ND	ND	ND	ND	ND	ND	ND	ND	ND	ND
	St. Balikudembe	ND	ND	ND	ND	ND	ND	ND	ND	ND	ND	ND	ND	ND	ND	ND	ND	ND	ND
	Joy Medical Cent	ND	ND	ND	ND	ND	ND	ND	ND	ND	ND	ND	ND	ND	ND	ND	ND	ND	ND
	SIMS Med Cent	ND	ND	ND	ND	ND	ND	ND	ND	ND	ND	ND	ND	ND	ND	ND	ND	ND	ND
	Alive Med Cent	ND	ND	ND	ND	ND	ND	ND	ND	ND	ND	ND	ND	ND	ND	ND	ND	ND	ND
	Intern Med Cent	ND	ND	ND	ND	ND	ND	ND	ND	ND	ND	ND	ND	ND	ND	ND	ND	ND	ND
	Nakasero Hosp	ND	ND	ND	ND	ND	ND	ND	ND	ND	ND	ND	ND	ND	ND	ND	ND	ND	ND
	Hope Cl Makindye	ND	ND	ND	ND	ND	ND	ND	ND	ND	ND	ND	ND	ND	ND	ND	ND	ND	ND
	Kampala Fam Cli	ND	ND	ND	ND	ND	ND	ND	ND	ND	ND	ND	ND	ND	ND	ND	ND	ND	ND
	Home Med Cent	ND	ND	ND	ND	ND	ND	ND	ND	ND	ND	ND	ND	ND	ND	ND	ND	ND	ND
	Makindye HC III	ND	ND	ND	ND	ND	ND	ND	ND	ND	ND	ND	ND	ND	ND	ND	ND	ND	ND
	Busabala Nursin H	ND	ND	ND	ND	ND	ND	ND	ND	ND	ND	ND	ND	ND	ND	ND	ND	ND	ND
	Paragon Hosp	ND	ND	ND	ND	ND	ND	ND	ND	ND	ND	ND	ND	ND	ND	ND	ND	ND	ND
	UGACOF Co	ND	ND	ND	ND	ND	ND	ND	ND	ND	ND	ND	ND	ND	ND	ND	ND	ND	ND
	Kireka SDA	ND	ND	ND	ND	ND	ND	ND	ND	ND	ND	ND	ND	ND	ND	ND	ND	ND	ND
	Nakigala Tea Estat	ND	ND	ND	ND	ND	ND	ND	ND	ND	ND	ND	ND	ND	ND	ND	ND	ND	ND
	Melisa Fowers	ND	ND	ND	ND	ND	ND	ND	ND	ND	ND	ND	ND	ND	ND	ND	ND	ND	ND
	Mirembe Med Ce	ND	ND	ND	ND	ND	ND	ND	ND	ND	ND	ND	ND	ND	ND	ND	ND	ND	ND

District	Facility	6 months treatment outcomes						12 months treatment outcomes						24 months treatment outcomes					
		No. started	% alive on Rx	% LTFU	% Dead	% stopped Rx	Lost	No. started	% alive on Rx	% LTFU	% Dead	% stopped Rx at	Lost	No. started	% alive on Rx	% LTFU	% Dead	% stop Rx	Lost
Kayunga	Mukisa Nursing H Banda	ND	ND	ND	ND	ND	ND	ND	ND	ND	ND	ND	ND	ND	ND	ND	ND	ND	ND
	Bugolobi Nursing Family Hope Cent	15	86.7	6.7	6.7	0.0	0.0	1	0	100	0	0	0	ND	ND	ND	ND	ND	ND
	Kinawataka	ND	ND	ND	ND	ND	ND	ND	ND	ND	ND	ND	ND	ND	ND	ND	ND	ND	ND
	Naguru Med Lab	96	76.0	17.7	5.2	0.0	1.0	132	72.0	21.2	3.8	0.0	3.0	137	62.8	22.6	6.6	1.5	6.6
	Reach out, Mbuya	42	100	0	0	0	0	2	100	0	0	0	0	ND	ND	ND	ND	ND	ND
		ND	ND	ND	ND	ND	ND	ND	ND	ND	ND	ND	ND	ND	ND	ND	ND	ND	ND
		53	100	0	0	0	0	33	100	0	0	0	0	ND	ND	ND	ND	ND	ND
Luwero	Kayunga Hospital Busana HC III	41	90.2	0.0	4.9	2.4	2.4	60	78.3	13.3	5.0	3.3	0.0	57	84.2	5.3	8.8	0.0	1.8
	Bbaale HCIV	34	88.2	8.8	2.9	0.0	0.0	35	80	17.1	0.0	2.9	0	29	72.4	10.3	17.2	0.0	0.0
	Garilaya HC IV	ND	ND	ND	ND	ND	ND	ND	ND	ND	ND	ND	ND	ND	ND	ND	ND	ND	ND
	Kangulumira HC	ND	ND	ND	ND	ND	ND	ND	ND	ND	ND	ND	ND	ND	ND	ND	ND	ND	ND
Mityana	Bombo Gen Milit Kalagala	ND	ND	ND	ND	ND	ND	ND	ND	ND	ND	ND	ND	ND	ND	ND	ND	ND	ND
	Luwero HC IV	ND	ND	ND	ND	ND	ND	ND	ND	ND	ND	ND	ND	ND	ND	ND	ND	ND	ND
	Holy Cross Kiky	12	91.7	0.0	8.3	0.0	0.0	41	100	0	0	0	0	37	89.2	0.0	8.1	2.7	0.0
	Ndejje Uni HC	ND	ND	ND	ND	ND	ND	ND	ND	ND	ND	ND	ND	ND	ND	ND	ND	ND	ND
	Kasaala HC	30	73.3	0.0	26.7	0.0	0.0	41	100	0	0	0	0	ND	ND	ND	ND	ND	ND
	Nyimbwa	ND	ND	ND	ND	ND	ND	ND	ND	ND	ND	ND	ND	ND	ND	ND	ND	ND	ND
	Bishop Asili Kasan	61	100	0	0	0	0	65	98.5	0.0	1.5	0.0	0.0	62	95.2	0.0	0.0	4.8	0.0
	St Luke Namaliha	ND	ND	ND	ND	ND	ND	ND	ND	ND	ND	ND	ND	ND	ND	ND	ND	ND	ND
		89	98.9	0.0	1.1	0.0	0.0	174	100	0	0	0	0	187	98.4	0.0	1.1	0.5	0.0
Mpigi	Mityana Hospital St Padre Pio	ND	ND	ND	ND	ND	ND	ND	ND	ND	ND	ND	ND	ND	ND	ND	ND	ND	ND
	Kyantungo HC IV	39	100	0	0	0	0	25	100	0	0	0	0	38	92.1	0.0	5.3	2.6	0.0
	Mwera HC IV	ND	ND	ND	ND	ND	ND	ND	ND	ND	ND	ND	ND	ND	ND	ND	ND	ND	ND
	Tamteco-Mityana	ND	ND	ND	ND	ND	ND	ND	ND	ND	ND	ND	ND	ND	ND	ND	ND	ND	ND
Butambala	Nkozi Hospital	46	89.1	6.5	4.3	0.0	0.0	81	84.0	3.7	3.7	2.5	6.2	91	75.8	4.4	8.8	3.3	7.7
	Fiduga Clinic	ND	ND	ND	ND	ND	ND	ND	ND	ND	ND	ND	ND	ND	ND	ND	ND	ND	ND
	Buwama HC III	37	97.3	0.0	2.7	0.0	0.0	47	100	0	0	0	0	43	95.3	0.0	2.3	2.3	0.0
	Mpigi HC IV	21	71.4	19.0	0.0	0.0	9.5	45	57.8	17.8	2.2	0.0	22.2	94	63.8	9.6	2.1	14.9	9.6
Gomba	Gombe Hospital	55	100	0	0	0	0												
Mukono	Maddu HC IV	9	100.0	0.0	0.0	0.0	0.0	21	100.0	0.0	0.0	0.0	0.0	10	100	0.0	0.0	0.0	0.0
	Nagalama	66	92.4	0.0	4.5	0.0	3.0	53	79.2	0.0	11.3	0.0	9.4	74	87.8	1.4	6.8	1.4	2.7
	Kojja HC IV	ND	ND	ND	ND	ND	ND	ND	ND	ND	ND	ND	ND	ND	ND	ND	ND	ND	ND
	Mukono COU HC	60	100	0	0	0	0	75	98.7	0.0	1.3	0.0	0.0	77	96.1	0.0	2.6	1.3	0.0
	Mukono HC	ND	ND	ND	ND	ND	ND	ND	ND	ND	ND	ND	ND	ND	ND	ND	ND	ND	ND
	Kyetume Static ce	ND	ND	ND	ND	ND	ND	ND	ND	ND	ND	ND	ND	ND	ND	ND	ND	ND	ND
	Royal VanZan Ten	ND	ND	ND	ND	ND	ND	ND	ND	ND	ND	ND	ND	ND	ND	ND	ND	ND	ND
	Family Hope Cent	ND	ND	ND	ND	ND	ND	ND	ND	ND	ND	ND	ND	ND	ND	ND	ND	ND	ND
Buikwe	Buvuma	3	100	0	0	0	0	6	100	0	0	0	0	10	100	0	0	0	0
	Nile Breweries	7	100	0	0	0	0	16	100	0	0	0	0	21	95.2	0.0	4.8	0.0	0.0
	St Francis Health	ND	ND	ND	ND	ND	ND	ND	ND	ND	ND	ND	ND	ND	ND	ND	ND	ND	ND

District	Facility	6 months treatment outcomes						12 months treatment outcomes						24 months treatment outcomes					
		No. started	% alive on Rx	% LTFU	% Dead	% stopped Rx	Lost	No. started	% alive on Rx	% LTFU	% Dead	% stopped Rx at	Lost	No. started	% alive on Rx	% LTFU	% Dead	% stop Rx	Lost
Nakaseke	Care Services																		
	Nkonkojeru	8	87.5	12.5	0.0	0.0	0.0	27	37.0	37.0	3.7	0.0	22.2	11	54.5	36.4	9.1	0.0	0.0
	Nyenga Mobile	ND	ND	ND	ND	ND	ND	ND	ND	ND	ND	ND	ND	ND	ND	ND	ND	ND	ND
	Kawolo Hospital	ND	ND	ND	ND	ND	ND	ND	ND	ND	ND	ND	ND	ND	ND	ND	ND	ND	ND
	SCOUL MEHTA	ND	ND	ND	ND	ND	ND	ND	ND	ND	ND	ND	ND	ND	ND	ND	ND	ND	ND
Wakiso	Buikwe Hosp	35	65.7	14.3	17.1	0.0	2.9	9	11.1	33.3	44.4	11.1	0.0	ND	ND	ND	ND	ND	ND
	Kiwoko Hospital	ND	ND	ND	ND	ND	ND	ND	ND	ND	ND	ND	ND	ND	ND	ND	ND	ND	ND
Wakiso	Nakaseke Hosp	ND	ND	ND	ND	ND	ND	ND	ND	ND	ND	ND	ND	ND	ND	ND	ND	ND	ND
	TASO Entebbe	315	83.2	8.3	8.6	0.0	0.0	195	81.5	11.3	7.2	0.0	0.0	315	ND	ND	ND	ND	ND
	Medical Res Coun	ND	ND	ND	ND	ND	ND	ND	ND	ND	ND	ND	ND	ND	ND	ND	ND	ND	ND
	Entebbe Grade B.	29	82.8	6.9	10.3	0.0	0.0	27	11.1	85.2	3.7	0.0	0.0	52	82.7	15.4	1.9	0.0	0.0
	Kisubi Hospital	ND	ND	ND	ND	ND	ND	ND	ND	ND	ND	ND	ND	ND	ND	ND	ND	ND	ND
	Katabi Hospital	ND	ND	ND	ND	ND	ND	ND	ND	ND	ND	ND	ND	ND	ND	ND	ND	ND	ND
	Saidina Abubaker	47	97.9	0.0	0.0	2.1	0.0	56	91.1	7.1	1.8	0.0	0.0	86	84.9	11.6	3.5	0.0	0.0
	Buwambo HC IV	ND	ND	ND	ND	ND	ND	ND	ND	ND	ND	ND	ND	ND	ND	ND	ND	ND	ND
	Namayumba HC	ND	ND	ND	ND	ND	ND	ND	ND	ND	ND	ND	ND	ND	ND	ND	ND	ND	ND
	Ndejje HC IV	ND	ND	ND	ND	ND	ND	ND	ND	ND	ND	ND	ND	ND	ND	ND	ND	ND	ND
	Wakiso HC IV	ND	ND	ND	ND	ND	ND	ND	ND	ND	ND	ND	ND	ND	ND	ND	ND	ND	ND
	Mildmay Hospital	254	96.9	0.0	3.1	0.0	0.0	588	94.7	0.0	5.3	0.0	0.0	452	88.3	0.0	8.8	0.2	2.7
	Wagagai Clinic	ND	ND	ND	ND	ND	ND	ND	ND	ND	ND	ND	ND	ND	ND	ND	ND	ND	ND
	Kabubu	7	100	0	0	0	0	11	100	0	0	0	0	ND	ND	ND	ND	ND	ND
	Namugongo Child	ND	ND	ND	ND	ND	ND	ND	ND	ND	ND	ND	ND	ND	ND	ND	ND	ND	ND
	Touch Namuwon	ND	ND	ND	ND	ND	ND	ND	ND	ND	ND	ND	ND	ND	ND	ND	ND	ND	ND
	Roofing facility	ND	ND	ND	ND	ND	ND	ND	ND	ND	ND	ND	ND	ND	ND	ND	ND	ND	ND
Kakiri 1st Div Mil	ND	ND	ND	ND	ND	ND	ND	ND	ND	ND	ND	ND	ND	ND	ND	ND	ND	ND	
MasaJa Nursing	ND	ND	ND	ND	ND	ND	ND	ND	ND	ND	ND	ND	ND	ND	ND	ND	ND	ND	
Tropical Clinic	ND	ND	ND	ND	ND	ND	ND	ND	ND	ND	ND	ND	ND	ND	ND	ND	ND	ND	
<b>Total for Region</b>		<b>3157</b>	<b>90.4</b>	<b>5.8</b>	<b>2.9</b>	<b>0.3</b>	<b>0.6</b>	<b>3995</b>	<b>87.0</b>	<b>8.6</b>	<b>3.3</b>	<b>0.3</b>	<b>0.8</b>	<b>1917</b>	<b>83.6</b>	<b>5.7</b>	<b>6.0</b>	<b>2.7</b>	<b>2.1</b>
<b>Fortportal Region</b>																			
<b>Bundibugyo</b>																			
Bundibugyo	Bundibugyo	ND	ND	ND	ND	ND	ND	ND	ND	ND	ND	ND	ND	ND	ND	ND	ND	ND	ND
	Nyahuka HC IV	ND	ND	ND	ND	ND	ND	ND	ND	ND	ND	ND	ND	ND	ND	ND	ND	ND	ND
<b>Ntoroko</b>																			
<b>Kabarole</b>																			
Kabarole	Fortportal RRH	ND	ND	ND	ND	ND	ND	ND	ND	ND	ND	ND	ND	ND	ND	ND	ND	ND	ND
	Kabarole Hospital	92	90.2	1.1	6.5	2.2	0.0	91	86.8	3.3	8.8	1.1	0.0	108	91.7	0.0	6.5	1.9	0.0
	Virika Hospital	ND	ND	ND	ND	ND	ND	ND	ND	ND	ND	ND	ND	ND	ND	ND	ND	ND	ND
	Bukuuku HC IV	ND	ND	ND	ND	ND	ND	ND	ND	ND	ND	ND	ND	ND	ND	ND	ND	ND	ND
	Kijura HC III	ND	ND	ND	ND	ND	ND	ND	ND	ND	ND	ND	ND	ND	ND	ND	ND	ND	ND
	Kibito HC IV	ND	ND	ND	ND	ND	ND	ND	ND	ND	ND	ND	ND	ND	ND	ND	ND	ND	ND
	Kiyombya HC III	ND	ND	ND	ND	ND	ND	ND	ND	ND	ND	ND	ND	ND	ND	ND	ND	ND	ND
	Yerya HC	ND	ND	ND	ND	ND	ND	ND	ND	ND	ND	ND	ND	ND	ND	ND	ND	ND	ND
	Kaswa HC III	ND	ND	ND	ND	ND	ND	ND	ND	ND	ND	ND	ND	ND	ND	ND	ND	ND	ND
	Rutete HC III	ND	ND	ND	ND	ND	ND	ND	ND	ND	ND	ND	ND	ND	ND	ND	ND	ND	ND
	Kisomoro HC III	ND	ND	ND	ND	ND	ND	ND	ND	ND	ND	ND	ND	ND	ND	ND	ND	ND	ND
	Rwimi HC III	ND	ND	ND	ND	ND	ND	ND	ND	ND	ND	ND	ND	ND	ND	ND	ND	ND	ND
	Kiko James Finlays	ND	ND	ND	ND	ND	ND	ND	ND	ND	ND	ND	ND	ND	ND	ND	ND	ND	ND
	Tam Toro Kahuna	ND	ND	ND	ND	ND	ND	ND	ND	ND	ND	ND	ND	ND	ND	ND	ND	ND	ND

District	Facility	6 months treatment outcomes						12 months treatment outcomes						24 months treatment outcomes						
		No. started	% alive on Rx	% LTFU	% Dead	% stopped Rx	Lost	No. started	% alive on Rx	% LTFU	% Dead	% stopped Rx at	Lost	No. started	% alive on Rx	% LTFU	% Dead	% stop Rx	Lost	
Kamwenge	Rukunyu HC	ND	ND	ND	ND	ND	ND	ND	ND	ND	ND	ND	ND	ND	ND	ND	ND	ND	ND	
	Ntara HC IV	100.0	0.0	0.0	0.0	0.0	0.0	34	100.0	0.0	0.0	0.0	0.0	61	100.0	0.0	0.0	0.0	0.0	
Kasese	Bwera Hospital	30	76.7	16.7	6.7	0.0	0.0	45	66.7	26.7	6.7	0.0	ND	ND	ND	ND	ND	ND	ND	
	Kilembe Hospital	61	68.9	24.6	6.6	0.0	0.0	98	73.5	24.5	2.0	0.0	ND	ND	ND	ND	ND	ND	ND	
	Kagando Hospital	ND	ND	ND	ND	ND	ND	ND	ND	ND	ND	ND	ND	ND	ND	ND	ND	ND	ND	
	Kasanga PHC	56	91.1	3.6	5.4	0.0	0.0	15	86.7	6.7	6.7	0.0	ND	ND	ND	ND	ND	ND	ND	
	St Paul' HC	ND	ND	ND	ND	ND	ND	ND	ND	ND	ND	ND	ND	ND	ND	ND	ND	ND	ND	
	Kasese Cob Comp	ND	ND	ND	ND	ND	ND	ND	ND	ND	ND	ND	ND	ND	ND	ND	ND	ND	ND	ND
	Micro care Hima	ND	ND	ND	ND	ND	ND	ND	ND	ND	ND	ND	ND	ND	ND	ND	ND	ND	ND	ND
	Cement Fac	ND	ND	ND	ND	ND	ND	ND	ND	ND	ND	ND	ND	ND	ND	ND	ND	ND	ND	ND
Kyenjojo	Kyarusenzi HC IV	ND	ND	ND	ND	ND	ND	ND	ND	ND	ND	ND	ND	ND	ND	ND	ND	ND	ND	
	Kyenjojo HC IV	ND	ND	ND	ND	ND	ND	ND	ND	ND	ND	ND	ND	ND	ND	ND	ND	ND	ND	
	Tamteco-Kiamara	ND	ND	ND	ND	ND	ND	ND	ND	ND	ND	ND	ND	ND	ND	ND	ND	ND	ND	
	Mwenge Finlay U	ND	ND	ND	ND	ND	ND	ND	ND	ND	ND	ND	ND	ND	ND	ND	ND	ND	ND	
Kyegegwa	ND	ND	ND	ND	ND	ND	ND	ND	ND	ND	ND	ND	ND	ND	ND	ND	ND	ND	ND	
	Kyegegwa HC IV	ND	ND	ND	ND	ND	ND	ND	ND	ND	ND	ND	ND	ND	ND	ND	ND	ND	ND	
<b>Total for Region</b>	<b>262</b>	<b>84.7</b>	<b>8.8</b>	<b>5.7</b>	<b>0.8</b>	<b>0.0</b>	<b>283</b>	<b>80.6</b>	<b>14.1</b>	<b>4.9</b>	<b>0.4</b>	<b>0.0</b>	<b>169</b>	<b>94.7</b>	<b>0.0</b>	<b>4.1</b>	<b>1.2</b>	<b>0.0</b>		
<b>Gulu Region</b>																				
Amuru	Atiak HC IV	19	89.5	0.0	5.3	0.0	5.3	10	80.0	10.0	0.0	0.0	10.0	15	73.3	13.3	13.3	0.0	0.0	
	Pabbo	1	100.0	0.0	0.0	0.0	0.0	12	91.7	0.0	8.3	0.0	0.0	4	100	0.0	0.0	0.0	0.0	
Nwoya	Anaka Hospital	36	94.4	5.6	0.0	0.0	0.0	34	47.1	17.6	8.8	0.0	ND	ND	ND	ND	ND	ND	ND	
	Koch Goma	17	94.1	5.9	0.0	0.0	0.0	9	100.0	0.0	0.0	0.0	ND	ND	ND	ND	ND	ND	ND	
Gulu	TASO Gulu	250	99.6	0	0.4	0	0	260	92.69	6.15	1.15	0.00	ND	ND	ND	ND	ND	ND	ND	
	Gulu RRH	ND	ND	ND	ND	ND	ND	ND	ND	ND	ND	ND	ND	ND	ND	ND	ND	ND	ND	
	Gulu Indep Hosp	ND	ND	ND	ND	ND	ND	ND	ND	ND	ND	ND	ND	ND	ND	ND	ND	ND	ND	
	Gulu Mil 4th divis	ND	ND	ND	ND	ND	ND	ND	ND	ND	ND	ND	ND	ND	ND	ND	ND	ND	ND	
	Lacor Hospital	88	93.2	1.1	5.7	0.0	0.0	176	80.1	8.0	10.8	1.1	0.0	195	85.6	5.1	8.7	0.5	0.0	
	Bobo HC III	12	91.7	0.0	8.3	0.0	0.0	10	90.0	0.0	10.0	0.0	0.0	ND	ND	ND	ND	ND	ND	
	Awach Hc IV	13	100.0	0.0	0.0	0.0	0.0	16	68.8	18.8	6.3	0.0	6.3	10	60.0	10.0	30.0	0.0	0.0	
	Lalogi HC IV	14	100.0	0.0	0.0	0.0	0.0	83	91.6	6.0	0.0	0.0	2.4	38	76.3	7.9	10.5	0.0	5.3	
Kitgum	St Joseph Kitgum	ND	ND	ND	ND	ND	ND	ND	ND	ND	ND	ND	ND	ND	ND	ND	ND	ND	ND	
	Madiopei	ND	ND	ND	ND	ND	ND	ND	ND	ND	ND	ND	ND	ND	ND	ND	ND	ND	ND	
	Namokora	6	100.0	0.0	0.0	0.0	0.0	6	100.0	0.0	0.0	0.0	0.0	6	100.0	0.0	0.0	0.0	0.0	
	Kitgum Hospital	62	88.7	9.7	1.6	0.0	0.0	124.0	59.7	37.1	3.2	0.0	0.0	ND	ND	ND	ND	ND	ND	
Lamwo	Pala Ber Kal HC	81	33.3	40.7	2.5	0.0	23.5	74	5.4	89.2	5.4	0.0	0.0	ND	ND	ND	ND	ND	ND	
	Padibe HC IV	ND	ND	ND	ND	ND	ND	ND	ND	ND	ND	ND	ND	ND	ND	ND	ND	ND	ND	
Pader	5th Div Acholi PII	ND	ND	ND	ND	ND	ND	ND	ND	ND	ND	ND	ND	ND	ND	ND	ND	ND	ND	
	Pajule HC IV	14	92.9	0.0	7.1	0.0	0.0	29	86.2	3.4	10.3	0.0	0.0	ND	ND	ND	ND	ND	ND	
	Atanga	8	100.0	0.0	0.0	0.0	0.0	3	66.7	0.0	33.3	0.0	0.0	ND	ND	ND	ND	ND	ND	
	Pader HC III	ND	ND	ND	ND	ND	ND	ND	ND	ND	ND	ND	ND	ND	ND	ND	ND	ND	ND	
Agago	Kalongo Hospital	56	92.9	0.0	7.1	0.0	0.0	29	96.6	0.0	3.4	0.0	0.0	134	88.8	2.2	7.5	1.5	0.0	

District	Facility	6 months treatment outcomes						12 months treatment outcomes						24 months treatment outcomes					
		No. started	% alive on Rx	% LTFU	% Dead	% stopped Rx	Lost	No. started	% alive on Rx	% LTFU	% Dead	% stopped Rx at	Lost	No. started	% alive on Rx	% LTFU	% Dead	% stop Rx	Lost
	Patongo HC IV	ND	ND	ND	ND	ND	ND	ND	ND	ND	ND	ND	ND	ND	ND	ND	ND	ND	ND
<b>Total for Region</b>		677	88.3	6.4	2.4	0.0	3,0	869	75.4	18.2	4.7	0.2	1.5	396	84.8	4.8	9.1	0.8	0.5
<b>Hoima Region</b>																			
<b>Hoima</b>																			
	Finlays-Bagambe	ND	ND	ND	ND	ND	ND	ND	ND	ND	ND	ND	ND	ND	ND	ND	ND	ND	ND
	Finlays- Kisaku	ND	ND	ND	ND	ND	ND	ND	ND	ND	ND	ND	ND	ND	ND	ND	ND	ND	ND
	Kyangwali	ND	ND	ND	ND	ND	ND	ND	ND	ND	ND	ND	ND	ND	ND	ND	ND	ND	ND
	Kabalega Med Ce	ND	ND	ND	ND	ND	ND	ND	ND	ND	ND	ND	ND	ND	ND	ND	ND	ND	ND
	Hoima RRH	93	100.0	0.0	0.0	0.0	0.0	154	99.4	0.0	0.6	0.0	0.0	181	99.4	0.0	0.6	0.0	0.0
	Kikuube HC IV	18	100.0	0.0	0.0	0.0	0.0	16	100.0	0.0	0.0	0.0	0.0	ND	ND	ND	ND	ND	ND
	Kyehoro HC	ND	ND	ND	ND	ND	ND	ND	ND	ND	ND	ND	ND	ND	ND	ND	ND	ND	ND
<b>Kibaale</b>																			
	Kagadi Hospital	46	82.6	13.0	4.3	0.0	0.0	43	86.0	11.6	2.3	0.0	0.0	43	79.1	16.3	4.7	0.0	0.0
	Kakumiro HC IV	25	60.0	32.0	8.0	0.0	0.0	23	69.6	26.1	4.3	0.0	0.0	16	75.0	25.0	0.0	0.0	0.0
	Kakindo HC IV	30	66.7	26.7	6.7	0.0	0.0	11	54.5	45.5	0.0	0.0	0.0	12	50.0	50.0	0.0	0.0	0.0
	Kibaale HC IV	23	69.6	30.4	0.0	0.0	0.0	23	52.2	47.8	0.0	0.0	0.0	9	77.8	22.2	0.0	0.0	0.0
<b>Kiboga</b>																			
	Kiboga Hospital	ND	ND	ND	ND	ND	ND	ND	ND	ND	ND	ND	ND	ND	ND	ND	ND	ND	ND
	Bukomero	14	85.7	14.3	0.0	0.0	0.0	26	96.2	3.8	0.0	0.0	0.0	14	ND	ND	ND	ND	ND
	Ntwetwe HC IV	20	80.0	0.0	15.0	0.0	5.0	29	79.3	6.9	10.3	0.0	3.4	10	60	10	30	0	0
<b>Buliisa</b>																			
	Buliisa	16	87.5	12.5	0.0	0.0	0.0	8	37.5	62.5	0.0	0.0	0.0	ND	ND	ND	ND	ND	ND
<b>Masindi</b>																			
	TASO Masindi	146	89.7	6.8	2.7	0.7	0.0	150	90.7	1.3	7.3	0.7	0.0	ND	ND	ND	ND	ND	ND
	Masindi Hospital	28	60.7	32.1	0.0	3.6	3.6	18	50.0	50.0	0.0	0.0	0.0	34	41.2	58.8	0.0	0.0	0.0
	Bwijanga HC IV	7	85.7	0.0	14.3	0.0	0.0	7	28.6	14.3	57.1	0.0	0.0	3	33.3	66.7	0.0	0.0	0.0
	Kinyara Sugar Wo	9	100.0	0.0	0.0	0.0	0.0	4	100.0	0.0	0.0	0.0	0.0	ND	ND	ND	ND	ND	ND
<b>Kiryandongo</b>																			
	Kiryandongo	24	95.8	0.0	4.2	0.0	0.0	29	82.8	10.3	6.9	0.0	0.0	28	78.6	10.7	7.1	3.6	0.0
<b>Mubende</b>																			
	MRC Milit Hosp	ND	ND	ND	ND	ND	ND	ND	ND	ND	ND	ND	ND	ND	ND	ND	ND	ND	ND
	Mubende RRH	ND	ND	ND	ND	ND	ND	ND	ND	ND	ND	ND	ND	ND	ND	ND	ND	ND	ND
	People' Clinic Kas	ND	ND	ND	ND	ND	ND	ND	ND	ND	ND	ND	ND	ND	ND	ND	ND	ND	ND
<b>Nakasongola</b>																			
	Nakasongola Mili	ND	ND	ND	ND	ND	ND	ND	ND	ND	ND	ND	ND	ND	ND	ND	ND	ND	ND
	Luwero Indust Lt	ND	ND	ND	ND	ND	ND	ND	ND	ND	ND	ND	ND	ND	ND	ND	ND	ND	ND
	Nakasongola HC	ND	ND	ND	ND	ND	ND	ND	ND	ND	ND	ND	ND	ND	ND	ND	ND	ND	ND
<b>Total for Region</b>		483	85.7	10.4	3.1	0.4	0.4	533	86.9	8.4	4.3	0.2	0.2	336	83.9	13.4	2.4	0.3	0.0
<b>Jinja Region</b>																			
<b>Bugiri</b>																			
	Bugiri Hospital	28	60.7	21.4	3.6	0.0	14.3	25	68.0	20.0	0.0	0.0	12.0	28	50.0	39.3	7.1	0.0	3.6
	Nankoma HC IV	90.9	2.3	2.3	0.0	4.5	90.9	2.3	ND*	ND*	ND*	ND*	ND*	ND*	ND*	ND*	ND*	ND*	ND*
	Banda HC III	ND*	ND*	ND*	ND*	ND*	ND*	ND*	ND*	ND*	ND*	ND*	ND*	ND*	ND*	ND*	ND*	ND*	ND*
<b>Namayingo</b>																			
	Buyinja HC Sigulu	22	81.8	0.0	18.2	0.0	0.0	15	73.3	13.3	13.3	0.0	0.0	10	60.0	20.0	20.0	0.0	0.0
<b>Iganga</b>																			
	Iganga Hospital	36	69.4	19.4	0.0	5.6	5.6	55	45.5	18.2	0.0	18.2	18.2	19	21.1	26.3	26.3	26.3	0.0
	Busesa	9	66.7	11.1	11.1	0.0	11.1	6	33.3	16.7	16.7	16.7	16.7	9	44.4	11.1	22.2	11.1	11.1
	Bugono HC IV	26	92.3	0.0	7.7	0.0	0.0	37	94.6	0.0	5.4	0.0	0.0	60	96.7	0.0	3.3	0.0	0.0
	Namungalwe HC	ND	ND	ND	ND	ND	ND	ND	ND	ND	ND	ND	ND	ND	ND	ND	ND	ND	ND

District	Facility	6 months treatment outcomes						12 months treatment outcomes						24 months treatment outcomes					
		No. started	% alive on Rx	% LTFU	% Dead	% stopped Rx	Lost	No. started	% alive on Rx	% LTFU	% Dead	% stopped Rx	Lost	No. started	% alive on Rx	% LTFU	% Dead	% stop Rx	Lost
	Busembatia	ND*	ND*	ND*	ND*	ND*	ND*	ND*	ND*	ND*	ND*	ND*	ND*	ND*	ND*	ND*	ND*	ND*	ND*
Luuka	Kiyunga HC IV	6	100.0	0.0	0.0	0.0	0.0	13	61.5	15.4	7.7	0.0	15.4	6	100	0.0	0.0	0.0	0.0
Jinja	TASO Jinja	266	82.3	16.2	1.5	0.0	0.0	247	81.8	13.8	4.5	0.0	0.0	ND	ND	ND	ND	ND	ND
	Jinja Reg Ref Hosp	ND	ND	ND	ND	ND	ND	ND	ND	ND	ND	ND	ND	ND	ND	ND	ND	ND	ND
	Kakira JCRC RCO	ND	ND	ND	ND	ND	ND	ND	ND	ND	ND	ND	ND	ND	ND	ND	ND	ND	ND
	Kakira Hospital	11	45.5	0.0	0.0	0.0	54.5	ND	ND	ND	ND	ND	ND	ND	ND	ND	ND	ND	ND
	Buwenge HC IV	8	87.5	0.0	12.5	0.0	0.0	29	65.5	13.8	10.3	0.0	10.3	14	64.3	14.3	21.4	0.0	0.0
	Budondo HC IV	4	50.0	25.0	25.0	0.0	0.0	10	70.0	30.0	0.0	0.0	0.0	14	35.7	50.0	14.3	0.0	0.0
	Bugembe HC IV	24	95.8	0.0	4.2	0.0	0.0	23	82.6	8.7	8.7	0.0	0.0	7	71.4	14.3	14.3	0.0	0.0
	Walukuba HC IV	7	28.6	14.3	14.3	0.0	42.9	8	50.0	50.0	0.0	0.0	0.0	ND	ND	ND	ND	ND	ND
	Mpumudde HC	11	36.4	0.0	0.0	0.0	63.6	8	100.0	0.0	0.0	0.0	0.0	ND	ND	ND	ND	ND	ND
	Intern Med Cent	ND	ND	ND	ND	ND	ND	ND	ND	ND	ND	ND	ND	ND	ND	ND	ND	ND	ND
	Nytil Picfare	ND	ND	ND	ND	ND	ND	ND	ND	ND	ND	ND	ND	ND	ND	ND	ND	ND	ND
Kaliro	Bumanya HC IV	ND	ND	ND	ND	ND	ND	ND	ND	ND	ND	ND	ND	ND	ND	ND	ND	ND	ND
	Nawaikoke HC III	ND	ND	ND	ND	ND	ND	ND	ND	ND	ND	ND	ND	ND	ND	ND	ND	ND	ND
	Namugongo HC	ND	ND	ND	ND	ND	ND	ND	ND	ND	ND	ND	ND	ND	ND	ND	ND	ND	ND
Kamuli	Kamuli Hospital	ND	ND	ND	ND	ND	ND	ND	ND	ND	ND	ND	ND	ND	ND	ND	ND	ND	ND
	Nankandulo HC	ND	ND	ND	ND	ND	ND	ND	ND	ND	ND	ND	ND	ND	ND	ND	ND	ND	ND
	Namwendwa HC	38	94.7	0.0	5.3	0.0	0.0	ND	ND	ND	ND	ND	ND	ND	ND	ND	ND	ND	ND
	Kamuli Miss Hosp	49	71.4	28.6	0.0	0.0	0.0	39	33.3	51.3	5.1	0.0	10.3	19	100	0	0	0	0
Buyende	Kidera HC IV	ND	ND	ND	ND	ND	ND	ND	ND	ND	ND	ND	ND	ND	ND	ND	ND	ND	ND
Mayuge	Buluba Hospital	16	81.3	18.8	0.0	0.0	0.0	13	100.0	0.0	0.0	0.0	0.0	4	100	0.0	0.0	0.0	0.0
	Kityerera HC IV	5	100.0	0.0	0.0	0.0	0.0	ND	ND	ND	ND	ND	ND	ND	ND	ND	ND	ND	ND
	Kigandalo HC	3	100.0	0.0	0.0	0.0	0.0	7	71.4	0.0	28.6	0.0	0.0	3	100	0.0	0.0	0.0	0.0
	Mayuge HC	6	83.3	0.0	16.7	0.0	0.0	ND	ND	ND	ND	ND	ND	ND	ND	ND	ND	ND	ND
	Wabulungu	ND	ND	ND	ND	ND	ND	ND	ND	ND	ND	ND	ND	ND	ND	ND	ND	ND	ND
Namutumba	Nsinze HC IV	ND	ND	ND	ND	ND	ND	ND	ND	ND	ND	ND	ND	ND	ND	ND	ND	ND	ND
	Namutumba	82	73.2	8.5	3.7	2.4	12.2	ND	ND	ND	ND	ND	ND	ND	ND	ND	ND	ND	ND
	Ivukula	53	71.7	22.6	3.8	0.0	1.9	ND	ND	ND	ND	ND	ND	ND	ND	ND	ND	ND	ND
	Bulange	ND	ND	ND	ND	ND	ND	ND	ND	ND	ND	ND	ND	ND	ND	ND	ND	ND	ND
<b>Total for Region</b>		<b>754</b>	<b>78.6</b>	<b>12.7</b>	<b>3.3</b>	<b>0.5</b>	<b>4.8</b>	<b>535</b>	<b>75.5</b>	<b>16.3</b>	<b>4.9</b>	<b>2.1</b>	<b>4.3</b>	<b>193</b>	<b>71.0</b>	<b>15.0</b>	<b>9.8</b>	<b>3.1</b>	<b>1.0</b>
<b>Kabale Region</b>																			
Kabale	Kabale RRH	86	80.2	9.3	9.3	1.2	0.0	120	90.0	2.5	5.0	0.0	2.5	122	97.5	0.8	1.6	0.0	0.0
	Kigezi H Care Fou	ND	ND	ND	ND	ND	ND	ND	ND	ND	ND	ND	ND	ND	ND	ND	ND	ND	ND
	Hamurwa HC	8	100.0	0.0	0.0	0.0	0.0	18	100.0	0.0	0.0	0.0	0.0	3	100	0.0	0.0	0.0	0.0
	Mparo	13	100.0	0.0	0.0	0.0	0.0	4	75.0	0.0	25.0	0.0	0.0	11	100	0.0	0.0	0.0	0.0
	Muko	ND	ND	ND	ND	ND	ND	ND	ND	ND	ND	ND	ND	ND	ND	ND	ND	ND	ND
	Rubaya	7	100.0	0.0	0.0	0.0	0.0	6	50.0	16.7	33.3	0.0	0.0	4	75.0	0.0	25.0	0.0	0.0
	Maziba	ND	ND	ND	ND	ND	ND	ND	ND	ND	ND	ND	ND	ND	ND	ND	ND	ND	ND
	Iruhura	ND	ND	ND	ND	ND	ND	ND	ND	ND	ND	ND	ND	ND	ND	ND	ND	ND	ND
	Rugarama HC	ND	ND	ND	ND	ND	ND	ND	ND	ND	ND	ND	ND	ND	ND	ND	ND	ND	ND
	Bukinda HC IV	15	100.0	0.0	0.0	0.0	0.0	16	87.5	0.0	12.5	0.0	0.0	ND	ND	ND	ND	ND	ND
	Kamwezi HC	ND	ND	ND	ND	ND	ND	ND	ND	ND	ND	ND	ND	ND	ND	ND	ND	ND	ND

District	Facility	6 months treatment outcomes						12 months treatment outcomes						24 months treatment outcomes					
		No. started	% alive on Rx	% LTFU	% Dead	% stopped Rx	Lost	No. started	% alive on Rx	% LTFU	% Dead	% stopped Rx at	Lost	No. started	% alive on Rx	% LTFU	% Dead	% stop Rx	Lost
Kanungu	Kambuga Hosp	ND	ND	ND	ND	ND	ND	ND	ND	ND	ND	ND	ND	ND	ND	ND	ND	ND	ND
	Kinkinzi Hospital	ND	ND	ND	ND	ND	ND	ND	ND	ND	ND	ND	ND	ND	ND	ND	ND	ND	ND
	Kihihi HC IV	19	84.2	0.0	15.8	0.0	0.0	9	100.0	0.0	0.0	0.0	0.0	10	100	0.0	0.0	0.0	0.0
	Bwindi Comm	52	94.2	5.8	0.0	0.0	0.0	40	100.0	0.0	0.0	0.0	0.0	56	96.4	1.8	0.0	1.8	0.0
Kisoro	Kisoro Hospital	ND	ND	ND	ND	ND	ND	ND	ND	ND	ND	ND	ND	ND	ND	ND	ND	ND	ND
	Mutolere Hospital	ND	ND	ND	ND	ND	ND	ND	ND	ND	ND	ND	ND	ND	ND	ND	ND	ND	ND
Rukungiri	TASO Rukungiri	234	99.6	0.0	0.4	0.0	0.0	319	97.2	0.0	2.8	0.0	0.0	ND	ND	ND	ND	ND	ND
	Kisiizi Hospital	6	100.0	0.0	0.0	0.0	0.0	8	75.0	0.0	12.5	0.0	12.5	117	100	0.0	0.0	0.0	0.0
	Nyakibale Hosp	18	50.0	11.1	33.3	0.0	5.6	37	70.3	5.4	21.6	0.0	2.7	ND	ND	ND	ND	ND	ND
<b>Total for Region</b>		464	92.9	2.8	3.9	0.2	0.2	586	93.0	1.0	5.1	0.0	0.9	323	98.1	0.6	0.9	0.3	0.0
<b>Lira Region</b>																			
Amolatar	Amai Community	24	100.0	0.0	0.0	0.0	0.0	56	83.9	8.9	5.4	1.8	0.0	149	82.6	8.1	7.4	2.0	0.0
	Amolatar HC IV	34	76.5	8.8	11.8	0.0	2.9	17	52.9	23.5	17.6	5.9	0.0	47	61.7	34.0	0.0	0.0	4.3
	Etam HC III																		
	Namasale	16	75.0	18.8	0.0	0.0	6.3	16	68.8	31.3	0.0	0.0	0.0	ND	ND	ND	ND	ND	ND
Apac	Apac Hospital	48	58.3	27.1	2.1	8.3	4.2	54	59.3	24.1	0.0	11.1	5.6	77	77.9	13.0	0.0	1.3	7.8
	Aduku HC IV	44	88.6	4.5	2.3	0.0	4.5	ND	ND	ND	ND	ND	ND	ND	ND	ND	ND	ND	ND
	Akokoro	23	91.3	4.3	4.3	0.0	0.0	31	74.2	12.9	3.2	0.0	9.7	6	100	0	0	0	0
Kole	Aboke HC IV	26	73.1	0.0	3.8	23.1	0.0	64	89.1	0.0	4.7	0.0	6.3	16	93.8	0.0	6.3	0.0	0.0
	Bala	26	30.8	34.6	7.7	0.0	26.9	10	80.0	10.0	10.0	0.0	0.0	ND	ND	ND	ND	ND	ND
Dokolo	Dokolo HC	87.9	0.0	12.1	0.0	0.0	87.9	ND	ND	ND	ND	ND	ND	ND	ND	ND	ND	ND	ND
	Kwera	8	100.0	0.0	0.0	0.0	0.0	23	100.0	0.0	0.0	0.0	0.0	ND	ND	ND	ND	ND	ND
	Batta	33	100.0	0.0	0.0	0.0	0.0	ND	ND	ND	ND	ND	ND	ND	ND	ND	ND	ND	ND
	Agwata	ND	ND	ND	ND	ND	ND	ND	ND	ND	ND	ND	ND	ND	ND	ND	ND	ND	ND
Lira	Lira RRH	110	90.0	2.7	1.8	0.9	4.5												
	Ogur HC IV	39	79.5	15.4	5.1	0.0	0.0	33	90.9	6.1	3.0	0.0	0.0	5	80.0	20.0	0.0	0.0	0.0
	Pag Mission	38	71.1	15.8	10.5	0.0	2.6	36	80.6	5.6	13.9	0.0	0.0	ND	ND	ND	ND	ND	ND
	Amach HC IV	28	25.0	0.0	46.4	0.0	28.6	68	82.4	0.0	13.2	0.0	4.4	ND	ND	ND	ND	ND	ND
	Barr HC III	ND	ND	ND	ND	ND	ND	ND	ND	ND	ND	ND	ND	ND	ND	ND	ND	ND	ND
	Lira Medical Cen	13	84.6	7.7	0.0	0.0	7.7	32	87.5	6.3	0.0	0.0	6.3	51	90.2	2.0	2.0	0.0	5.9
	Ayira Med Cent	ND	ND	ND	ND	ND	ND	ND	ND	ND	ND	ND	ND	ND	ND	ND	ND	ND	ND
	Charis	ND	ND	ND	ND	ND	ND	ND	ND	ND	ND	ND	ND	ND	ND	ND	ND	ND	ND
Otuke	Orum HC IV	10	100.0	0.0	0.0	0.0	0.0	6	100.0	0.0	0.0	0.0	0.0	8	87.5	12.5	0.0	0.0	0.0
Alebtong	Alebtong HC IV	31	96.8	0.0	3.2	0.0	0.0	64	90.6	4.7	3.1	1.6	0.0	ND	ND	ND	ND	ND	ND
Oyam	Aber Hospital	31	74.2	12.9	12.9	0.0	0.0	74	86.5	6.8	5.4	1.4	0.0	74	94.6	0.0	0.0	5.4	0.0
	Otwal HC	41	100.0	0.0	0.0	0.0	0.0	27	100.0	0.0	0.0	0.0	0.0	ND	ND	ND	ND	ND	ND
	Agulurude	ND	ND	ND	ND	ND	ND	ND	ND	ND	ND	ND	ND	ND	ND	ND	ND	ND	ND
	Anyeke HC IV	74	100.0	0.0	0.0	0.0	0.0	ND	ND	ND	ND	ND	ND	ND	ND	ND	ND	ND	ND
<b>Total for Region</b>		704	82.5	7.2	5.5	0.7	4.0	611	83.1	7.5	5.2	1.6	2.5	433	83.1	9.5	3.0	1.8	2.5
<b>Masaka Region</b>																			

District	Facility	6 months treatment outcomes						12 months treatment outcomes						24 months treatment outcomes					
		No. started	% alive on Rx	% LTFU	% Dead	% stopped Rx	Lost	No. started	% alive on Rx	% LTFU	% Dead	% stopped Rx at	Lost	No. started	% alive on Rx	% LTFU	% Dead	% stop Rx	Lost
<b>Kalangala</b>	Kalangala HC IV	44	70.5	18.2	6.8	0.0	4.5	27	88.9	7.4	0.0	0.0	3.7	41	78.0	14.6	4.9	0.0	2.4
<b>Lyantonde</b>	Lyantonde Hosp	30	70.0	23.3	3.3	0.0	3.3	63	61.9	34.9	3.2	0.0	0.0	41	39.0	61.0	0.0	0.0	0.0
	Lyantonde Islamic	25	80.0	0.0	4.0	0.0	16.0	35	97.1	0.0	0.0	0.0	2.9	27	96.3	0.0	3.7	0.0	0.0
<b>Masaka</b>	TASO Masaka	208	99.0	0.0	0.5	0.5	0.0	160	90.6	0.0	1.9	7.5	0.0	145	92.4	0.7	1.4	5.5	0.0
	Masaka RRH	ND	ND	ND	ND	ND	ND	ND	ND	ND	ND	ND	ND	ND	ND	ND	ND	ND	ND
	Kyanamukaka	4	50.0	0.0	0.0	0.0	50.0	5	80.0	0.0	20.0	0.0	0.0	ND	ND	ND	ND	ND	ND
	Kiyumba HC	9	100.0	0.0	0.0	0.0	0.0	9	100.0	0.0	0.0	0.0	0.0	7	71.4	0.0	28.6	0.0	0.0
	Kinoni HC III	21	100.0	0.0	0.0	0.0	0.0	19	100.0	0.0	0.0	0.0	0.0	4	50.0	50.0	0.0	0.0	0.0
	AID Child	1	100.0	0.0	0.0	0.0	0.0	2	100.0	0.0	0.0	0.0	0.0	1	100	0.0	0.0	0.0	0.0
	Kiwangala HC IV	4	75.0	0.0	25.0	0.0	0.0	10	100.0	0.0	0.0	0.0	0.0	4	100	0.0	0.0	0.0	0.0
	Kyazanga HC IV	4	50.0	0.0	50.0	0.0	0.0	11	72.7	27.3	0.0	0.0	0.0	2	50.0	50.0	0.0	0.0	0.0
	Kitovu Mobile	66	95.5	0.0	4.5	0.0	0.0	30	76.7	6.7	13.3	0.0	3.3	52	76.9	11.5	11.5	0.0	0.0
	Lambu	6	100.0	0.0	0.0	0.0	0.0	ND	ND	ND	ND	ND	ND	ND	ND	ND	ND	ND	ND
<b>Bukomansimbi</b>	Butenga HC IV	0	0.0	0.0	0.0	0.0	0.0	9	66.7	0.0	33.3	0.0	0.0	5	100	0.0	0.0	0.0	0.0
<b>Lwengo</b>	Lwengo HC IV	12	100.0	0.0	0.0	0.0	0.0	6	100.0	0.0	0.0	0.0	0.0	2	100	0.0	0.0	0.0	0.0
<b>Kalungu</b>	Villa Maria Hosp	98	87.8	10.2	1.0	1.0	0.0	71	83.1	1.4	9.9	5.6	0.0	55	72.7	5.5	20.0	1.8	0.0
	Bukulula HC IV	12	75.0	0.0	16.7	0.0	8.3	23	95.7	0.0	4.3	0.0	0.0	14	100	0.0	0.0	0.0	0.0
	Kalungu HC IV	7	85.7	0.0	14.3	0.0	0.0	4	75.0	0.0	0.0	25.0	0.0	ND	ND	ND	ND	ND	ND
	Kyamulibwa HC	2	100.0	0.0	0.0	0.0	0.0	4	75.0	25.0	0.0	0.0	0.0	1	100	0.0	0.0	0.0	0.0
	MRC Kyamulibwa	16	87.5	0.0	12.5	0.0	0.0	19	100.0	0.0	0.0	0.0	0.0	16	87.5	0.0	12.5	0.0	0.0
<b>Rakai</b>	Kalisizo Hospital	76	89.5	7.9	2.6	0.0	0.0	ND	ND	ND	ND	ND	ND	ND	ND	ND	ND	ND	ND
	Rakai Hospital																		
	Kakuuto HC IV	65	81.5	7.7	10.8	0.0	0.0	64	81.3	6.3	12.5	0.0	0.0	50	74.0	12.0	14.0	0.0	0.0
	Kyotera Med Cen	12	91.7	0.0	8.3	0.0	0.0	ND	ND	ND	ND	ND	ND	ND	ND	ND	ND	ND	ND
	Rakai Heal Sc Proj	63	96.8	1.6	1.6	0.0	0.0	75	89.3	5.3	5.3	0.0	0.0	63	96.8	1.6	1.6	0.0	0.0
<b>Ssembabule</b>	Ntuusi	1	100.0	0.0	0.0	0.0	0.0	1	0.0	100.0	0.0	0.0	0.0	7	14.3	57.1	28.6	0.0	0.0
	Mataate HC IV	18	77.8	5.6	16.7	0.0	0.0	29	62.1	31.0	6.9	0.0	0.0	16	62.5	0.0	0.0	0.0	37.5
	Sembabule HC	14	92.9	0.0	7.1	0.0	0.0	14	100.0	0.0	0.0	0.0	0.0	20	95.0	0.0	5.0	0.0	0.0
<b>Total for Region</b>		<b>888</b>	<b>89.9</b>	<b>4.6</b>	<b>4.0</b>	<b>0.2</b>	<b>1.2</b>	<b>690</b>	<b>84.9</b>	<b>7.1</b>	<b>5.1</b>	<b>2.5</b>	<b>0.4</b>	<b>510</b>	<b>79.2</b>	<b>10.6</b>	<b>7.1</b>	<b>1.8</b>	<b>1.4</b>
<b>Mbale Region</b>																			
<b>Bududa</b>	Bududa	27	81.5	7.4	3.7	7.4	0.0	27	66.7	18.5	14.8	0.0	0.0	11	54.5	27.3	18.2	0.0	0.0
<b>Bukwa</b>	Bukwa HC IV	ND	ND	ND	ND	ND	ND	ND	ND	ND	ND	ND	ND	ND	ND	ND	ND	ND	ND
<b>Busia</b>	Busia HC	35	91.4	5.7	0.0	0.0	2.9	5	100.0	0.0	0.0	0.0	0.0	ND	ND	ND	ND	ND	ND
	Dabani Hospital																		
	Masafu HC IV	39	89.7	2.6	7.7	0.0	0.0	44	84.1	6.8	9.1	0.0	0.0	33	66.7	3.0	30.3	0.0	0.0
<b>Budaka</b>	Budaka HC IV	9	100.0	0.0	0.0	0.0	0.0	24	8.3	54.2	12.5	0.0	25.0	ND	ND	ND	ND	ND	ND
<b>Butaleja</b>	Busolwe Hospital	59	83.1	11.9	1.7	0.0	3.4	36	58.3	33.3	5.6	2.8	0.0	22	50.0	36.4	13.6	0.0	0.0
<b>Kapchorwa</b>																			



District	Facility	6 months treatment outcomes						12 months treatment outcomes						24 months treatment outcomes					
		No. started	% alive on Rx	% LTFU	% Dead	% stopped Rx	Lost	No. started	% alive on Rx	% LTFU	% Dead	% stopped Rx at	Lost	No. started	% alive on Rx	% LTFU	% Dead	% stop Rx	Lost
Manafwa	Kapchorwa	22	100.0	0.0	0.0	0.0	0.0	17	82.4	0.0	17.6	0.0	0.0	17	88.2	0.0	11.8	0.0	0.0
	Magale HC IV	32	59.4	31.3	3.1	3.1	3.1	21	76.2	4.8	0.0	0.0	19.0	19	47.4	47.4	0.0	0.0	5.3
Mbale	Mbale RRH	59	76.3	11.9	1.7	0.0	10.2	40	55.0	22.5	7.5	2.5	12.5	31	32.3	38.7	22.6	0.0	6.5
	TASO Mbale	250	97.2	0.4	1.6	0.8	0	338	90.8	3.6	5.0	0.6	0.0						
Pallisa	Busiu HC IV	3	66.7	33.3	0.0	0.0	0.0	5	100.0	0.0	0.0	0.0	0.0	5	100	0.0	0.0	0.0	0.0
	Butembo	8	87.5	12.5	0.0	0.0	0.0	10	70.0	30.0	0.0	0.0	0.0	ND	ND	ND	ND	ND	ND
Kibuku	Pallisa Hospital	43	88.4	0.0	11.6	0.0	0.0	44	86.4	4.5	9.1	0.0	0.0	23	78.3	17.4	4.3	0.0	0.0
	Kibuku HC IV	14	42.9	35.7	14.3	0.0	7.1	13	76.9	23.1	0.0	0.0	0.0	2	100	0.0	0.0	0.0	0.0
Sironko	Budadiri HC IV	23	100.0	0.0	0.0	0.0	0.0	44	100.0	0.0	0.0	0.0	0.0	35	65.7	11.4	22.9	0.0	0.0
Bulambuli	Muyembe HC IV	10	70.0	20.0	10.0	0.0	0.0	10	70.0	30.0	0.0	0.0	0.0	12	58.3	41.7	0.0	0.0	0.0
Tororo	TASO Tororo	377	94.7	3.2	2.1	0.0	0.0	355	85.6	5.9	8.5	0.0	0.0	ND	ND	ND	ND	ND	ND
	St. Anthony	4	100.0	0.0	0.0	0.0	0.0	12	100.0	0.0	0.0	0.0	0.0	3	100	0.0	0.0	0.0	0.0
	Tororo Hospital	49	100.0	0.0	0.0	0.0	0.0	34	97.1	0.0	2.9	0.0	0.0	31	100	0.0	0.0	0.0	0.0
	Rubongi Mili	ND	ND	ND	ND	ND	ND	ND	ND	ND	ND	ND	ND	ND	ND	ND	ND	ND	ND
	Mukuju HC IV	ND	ND	ND	ND	ND	ND	ND	ND	ND	ND	ND	ND	ND	ND	ND	ND	ND	ND
	Mulanda HC IV	10	80.0	20.0	0.0	0.0	0.0	4	75.0	25.0	0.0	0.0	0.0	5	40.0	40.0	0.0	0.0	20.0
<b>Total for Region</b>		1073	91.1	4.9	2.5	0.4	1.0	1083	83.6	8.1	6.6	0.4	1.4	249	65.9	19.3	13.3	0.0	1.6
<b>Mbarara Region</b>																			
Bushenyi	Ishaka Hospital	16	87.5	12.5	0.0	0.0	0.0	21	52.4	42.9	4.8	0.0	0.0	176	67.0	31.8	1.1	0.0	0.0
	Comboni Hospital	59	93.2	0.0	5.1	1.7	0.0	55	94.5	0.0	3.6	1.8	0.0	132	84.8	0.0	9.8	5.3	0.0
	Katungu Med Cen	63	90.5	0.0	9.5	0.0	0.0	77	87.0	1.3	7.8	3.9	0.0	164	70.7	5.5	18.9	4.9	0.0
	Finlays Ankole	ND	ND	ND	ND	ND	ND	ND	ND	ND	ND	ND	ND	ND	ND	ND	ND	ND	ND
Rubiziri	Rugazi HC	8	37.5	25.0	0.0	0.0	37.5	6	66.7	0.0	0.0	0.0	33.3	ND	ND	ND	ND	ND	ND
Sheema	Kitagata Hospital	30	86.7	3.3	3.3	0.0	6.7	50	80.0	8.0	2.0	0.0	10.0	ND	ND	ND	ND	ND	ND
	Kabwohe Med Ce	64	93.8	0.0	6.3	0.0	0.0	148	89.9	0.0	8.1	2.0	0.0	208	78.8	7.2	8.2	5.8	0.0
Ibanda	Ibanda Hospital	0	0	0	0	0	0	29	86.2	13.8	0.0	0.0	0.0	35	62.9	28.6	8.6	0.0	0.0
	Ishongororo	ND	ND	ND	ND	ND	ND	ND	ND	ND	ND	ND	ND	ND	ND	ND	ND	ND	ND
	Ruhoro HC	ND	ND	ND	ND	ND	ND	ND	ND	ND	ND	ND	ND	ND	ND	ND	ND	ND	ND
Isingiro	Kabuyanda HC IV	ND	ND	ND	ND	ND	ND	ND	ND	ND	ND	ND	ND	ND	ND	ND	ND	ND	ND
Kiruhura	Rushere Hospital	ND	ND	ND	ND	ND	ND	ND	ND	ND	ND	ND	ND	ND	ND	ND	ND	ND	ND
Mbarara	TASO Mbarara	316	85.1	10.8	2.8	1.3	0.0	255	87.1	8.2	4.7	0.0	0.0	ND	ND	ND	ND	ND	ND
	Mbarara ISS	31	71.0	19.4	3.2	0.0	6.5	29	65.5	17.2	0.0	3.4	13.8	54	64.8	25.9	0.0	1.9	7.4
	Mbarara TB/HIV	17	88.2	11.8	0.0	0.0	0.0	ND	ND	ND	ND	ND	ND	ND	ND	ND	ND	ND	ND
	Mbarara Com Ho	10	90.0	0.0	0.0	0.0	10.0	5	100.0	0.0	0.0	0.0	0.0	6	100.0	0.0	0.0	0.0	0.0
	UPDF, 2ND DIVI	ND	ND	ND	ND	ND	ND	ND	ND	ND	ND	ND	ND	ND	ND	ND	ND	ND	ND
	Mbarara Mun Cou	137	99.3	0.0	0.7	0.0	0.0	152	93.4	3.9	2.6	0.0	0.0	175	90.9	6.9	2.3	0.0	0.0
	Bwizibwera HC	122	97.5	0.0	2.5	0.0	0.0	116	95.7	2.6	1.7	0.0	0.0	77	89.6	7.8	2.6	0.0	0.0

District	Facility	6 months treatment outcomes						12 months treatment outcomes						24 months treatment outcomes					
		No. started	% alive on Rx	% LTFU	% Dead	% stopped Rx	Lost	No. started	% alive on Rx	% LTFU	% Dead	% stopped Rx at	Lost	No. started	% alive on Rx	% LTFU	% Dead	% stop Rx	Lost
Ntungamo	Kinoni HC	ND	ND	ND	ND	ND	ND	ND	ND	ND	ND	ND	ND	ND	ND	ND	ND	ND	ND
	Mayanja Me Nur	ND	ND	ND	ND	ND	ND	ND	ND	ND	ND	ND	ND	ND	ND	ND	ND	ND	ND
	Itojo Hospital	45	88.9	8.9	2.2	0.0	0.0	46	95.7	4.3	0.0	0.0	0.0	ND	ND	ND	ND	ND	ND
	Rwashamire HC	13	92.3	0.0	7.7	0.0	0.0	19	94.7	0.0	5.3	0.0	0.0	10	80.0	10.0	10.0	0.0	0.0
	Rubaare HC	26	100.0	0.0	0.0	0.0	0.0	19	100.0	0.0	0.0	0.0	0.0	13	100	0.0	0.0	0.0	0.0
	Kitwe HC IV	ND	ND	ND	ND	ND	ND	ND	ND	ND	ND	ND	ND	ND	ND	ND	ND	ND	ND
<b>Total for Region</b>		957	90.2	5.3	3.1	0.5	0.8	1027	88.8	5.4	4.0	0.8	1.1	1050	78.3	11.7	7.0	2.7	0.4
<b>Moroto Region</b>																			
<b>Abim</b>	Abim Hospital	26	92.3	0.0	3.8	3.8	0.0	17	100.0	0.0	0.0	0.0	0.0	16	68.8	0.0	6.3	0.0	25.0
<b>Kaabong</b>	Kaabong Hospital	ND	ND	ND	ND	ND	ND	ND	ND	ND	ND	ND	ND	ND	ND	ND	ND	ND	ND
<b>Kotido</b>	Kotido COU HC III	ND	ND	ND	ND	ND	ND	ND	ND	ND	ND	ND	ND	ND	ND	ND	ND	ND	ND
<b>Moroto</b>	Moroto Mili HC III	ND	ND	ND	ND	ND	ND	ND	ND	ND	ND	ND	ND	ND	ND	ND	ND	ND	ND
	Moroto RRH	ND	ND	ND	ND	ND	ND	ND	ND	ND	ND	ND	ND	ND	ND	ND	ND	ND	ND
<b>Napak</b>	St. Kizito - Matany	13	76.9	23.1	0.0	0.0	0.0	ND	ND	ND	ND	ND	ND	ND	ND	ND	ND	ND	ND
<b>Nakapiripirit</b>	Tokora HC	ND	ND	ND	ND	ND	ND	ND	ND	ND	ND	ND	ND	ND	ND	ND	ND	ND	ND
	Nakapiripirit	ND	ND	ND	ND	ND	ND	ND	ND	ND	ND	ND	ND	ND	ND	ND	ND	ND	ND
<b>Amudat</b>	Amudat	6	66.7	0.0	0.0	0.0	33.3	ND	ND	ND	ND	ND	ND	ND	ND	ND	ND	ND	ND
<b>Total for Region</b>		45	84.4	6.7	2.2	2.2	4.4	17	100.0	0.0	0.0	0.0	0.0	16	68.8	0.0	6.3	0.0	25.0
<b>Soroti Region</b>																			
<b>Soroti</b>	TASO Soroti	249	96.4	2.0	0.4	1.2	0.0	354	92.9	1.4	0.0	5.6	ND	ND	ND	ND	ND	ND	ND
	Soroti RRH	13	100.0	0.0	0.0	0.0	0.0	10	80.0	10.0	10.0	0.0	0.0	28	92.9	3.6	3.6	0.0	0.0
	Soroti RRH																		
<b>Serere</b>	Serere HC IV	45	11.1	86.7	2.2	0.0	0.0	31	9.7	90.3	0.0	0.0	0.0	ND	ND	ND	ND	ND	ND
<b>Amuria</b>	Amuria HC IV	ND	ND	ND	ND	ND	ND	ND	ND	ND	ND	ND	ND	ND	ND	ND	ND	ND	ND
	Kaperebyong	ND	ND	ND	ND	ND	ND	ND	ND	ND	ND	ND	ND	ND	ND	ND	ND	ND	ND
<b>Kaberamaido</b>	Lwala Hospital	35	100.0	0.0	0.0	0.0	0.0	22	72.7	18.2	9.1	0.0	0.0	ND	ND	ND	ND	ND	ND
	Kaberamaido HC	50	60.0	36.0	4.0	0.0	0.0	72	69.4	27.8	2.8	0.0	0.0	ND	ND	ND	ND	ND	ND
<b>Katakwi</b>	Katakwi HC IV	ND	ND	ND	ND	ND	ND	ND	ND	ND	ND	ND	ND	ND	ND	ND	ND	ND	ND
<b>Kumi</b>	Atatur Hospital	30	80.0	0.0	20.0	0.0	0.0	37	94.6	0.0	5.4	0.0	0.0	60	96.7	0.0	3.3	0.0	0.0
	Kumi Hospital	26	92.3	0.0	7.7	0.0	0.0	ND	ND	ND	ND	ND	ND	ND	ND	ND	ND	ND	ND
<b>Ngora</b>	Ngora Hospital	26	100.0	0.0	0.0	0.0	0.0	ND	ND	ND	ND	ND	ND	ND	ND	ND	ND	ND	ND
<b>Bukedea</b>	Bukedea	29	82.8	17.2	0.0	0.0	0.0	22	68.2	31.8	0.0	0.0	0.0	14	78.6	21.4	0.0	0.0	0.0
<b>Total for Region</b>		503	83.7	13.3	2.4	0.6	0.0	548	83.2	11.9	1.3	3.6	0.0	102	93.1	3.9	2.9	0.0	0.0