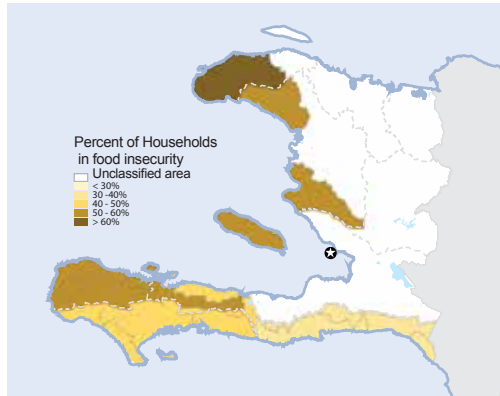


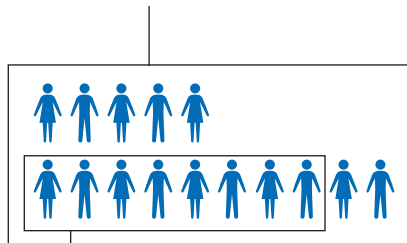


The humanitarian context in Haiti has been worsened by the hurricane Matthew, which violently struck Haiti on 4 October causing widespread damage, flooding and displacement. Nearly 2.1 million people were affected throughout the country (mainly in Grand'Anse, Sud and Nippes departments). It was estimated that 1.4 million people need humanitarian assistance. Cholera epidemic is still high with 41,421 cases registered between January and 31 December 2016. The binational mixed-migration crisis has surpassed the Humanitarian Response Plan planning figures (more than 168 thousand individuals voluntarily interviewed since June 2015). The food security situation, which improved slightly during the second half of 2016 due to strong improvement in rainfall (during spring growing season March-July), was aggravated again by Matthew with an estimated 1.5 million in food insecurity among them 280K are highly food insecure.

FOOD SECURITY & MALNUTRITION



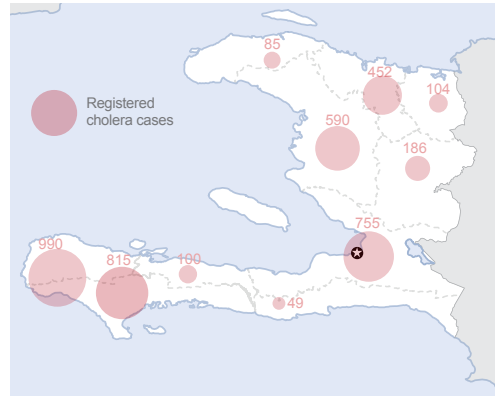
1.5 MILLION
PEOPLE ARE FOOD INSECURE



280k
PEOPLE ARE HIGHLY
FOOD INSECURE

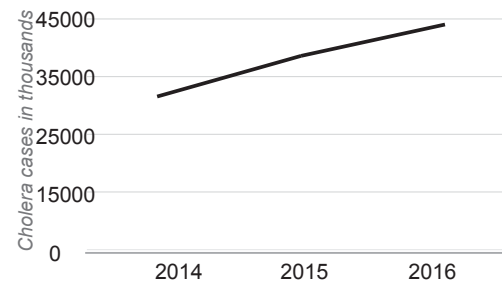
14K children in need of immediate therapeutic feeding
31K children in need of supplemental feeding
45K children with Global Acute Malnutrition

CHOLERA EPIDEMIC



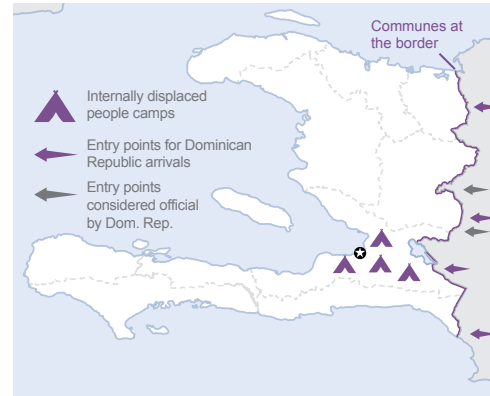
41,421 CUMULATIVE CASES (JAN-31 Dec 2016)

30,000 PEOPLE WHO COULD CONTRACT CHOLERA IN 2017



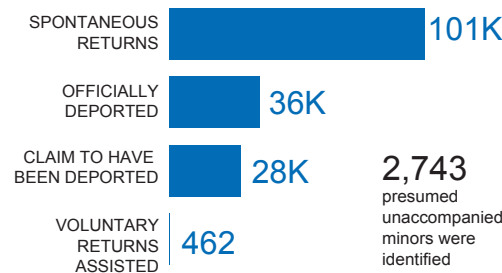
447 DEATHS
.91% LETHALITY RATE

BINATIONAL SITUATION and IDPs



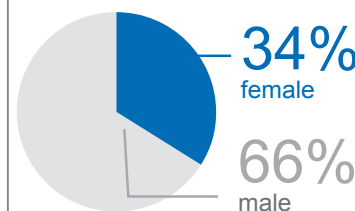
46,691 DISPLACED PEOPLE CONTINUE TO LIVE IN 31 CAMPS

168,810 RETURNEES INTERVIEWED FROM DOMINICAN REPUBLIC (as of 19 Jan. 2017)

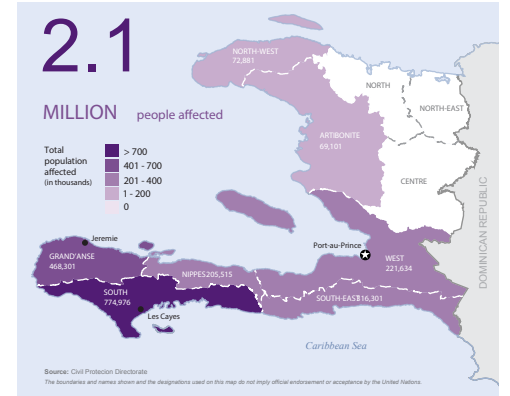


2,743 presumed unaccompanied minors were identified

11,543 people declared having been registered in the PNRE



NATURAL DISASTERS



2.1 MILLION PEOPLE AFFECTED BY HURRICANE MATTHEW

1.4 MILLION PEOPLE IN NEED OF HUMANITARIAN ASSISTANCE

175,000 PEOPLE DISPLACED BY HURRICANE MATTHEW

People in need by sector due to Hurricane Matthew

