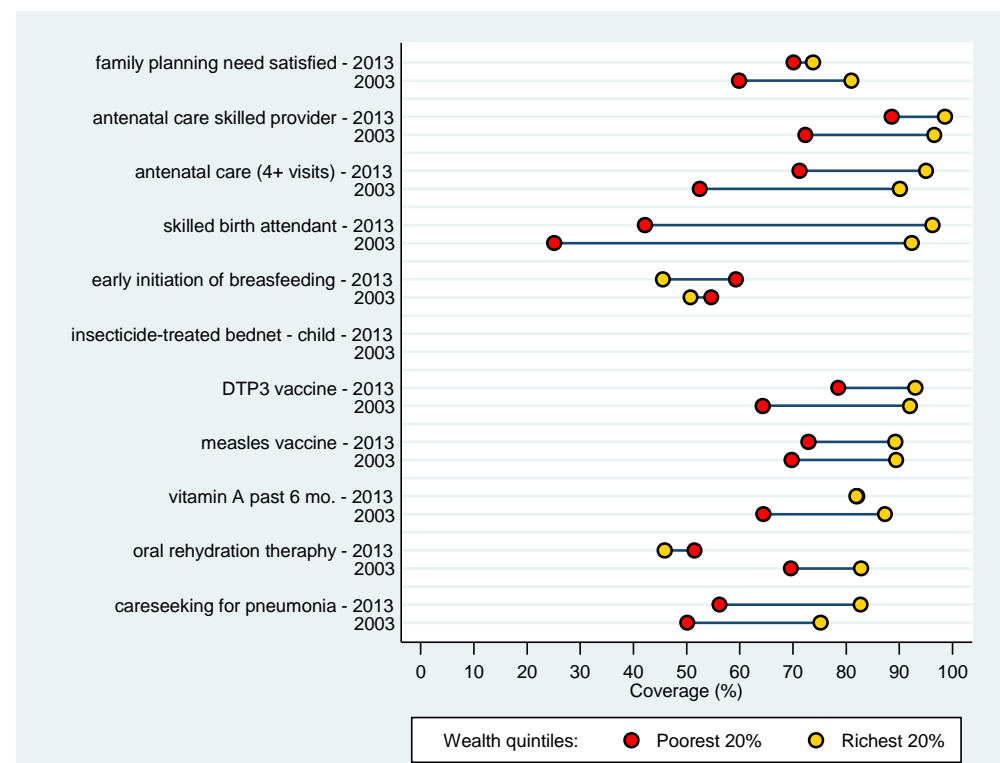


Philippines DHS 2013

Table - Coverage of Countdown indicators at national level and by key equity stratifiers. Please see the example cover profile for guidance on interpreting the table and graphs.

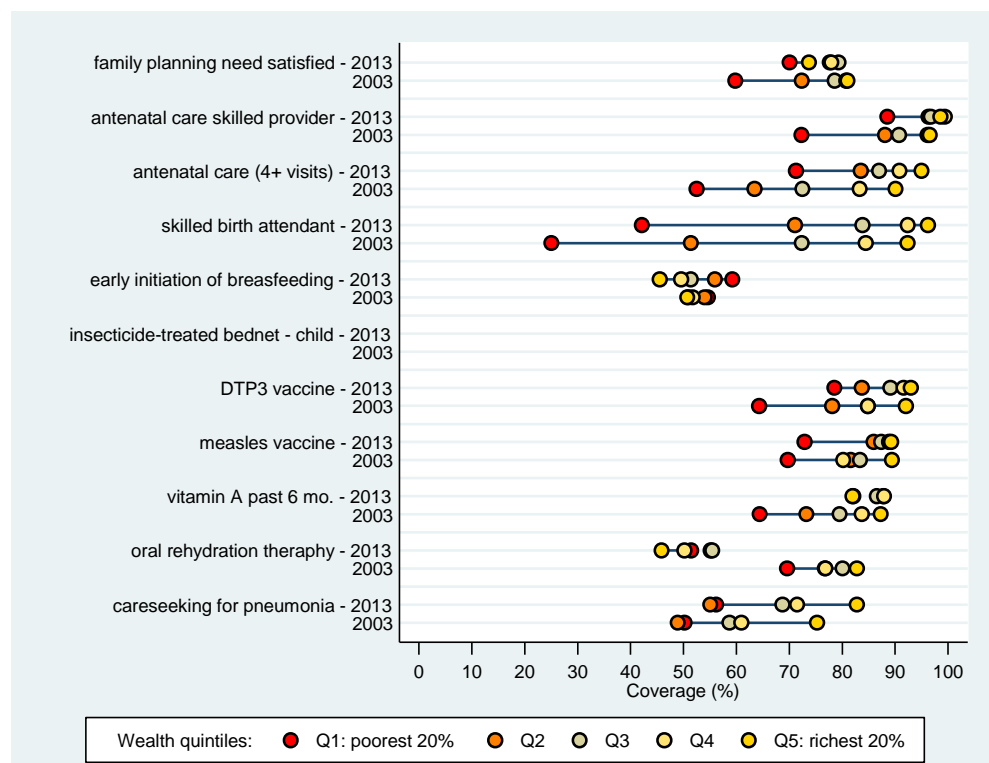
	Family planning need satisfied	Contraceptive prevalence rate	Antenatal care 1+ visits with skilled provider	Antenatal care 4+ visits, any provider	Skilled attendant at delivery	C-section rate	Early initiation of breastfeeding	Postnatal care for babies born at home	Postnatal care for all babies	BCG vaccine	DTP3 vaccine	Measles vaccine	Vitamin A in last 6 mos.	ORT and continued feeding	ORS (packet or pre-packaged)	Care seeking for pneumonia	ITN use by children	Improved drinking water source	Co-coverage (less than 3 interventions)	Co-coverage (6 or more interventions)	Composite coverage index	
National	75.9	55.1	95.4	84.3	72.8	9.3	53.2	36.6	52.8	95.4	86.2	83.9	85.2	52.5	49.1	63.8	NO	95.2	3.4	79.7	76.9	
Wealth quintiles																						
Q1	70.1	49.9	88.5	71.2	42.2	1.4	59.3	32.3	48.4	89.1	78.5	72.9	82.1	51.5	44.2	56.2	NO	82.9	10.0	60.2	67.7	
Q2	77.7	58.3	96.3	83.5	71.0	5.2	55.9	39.7	56.9	96.7	83.7	85.9	87.8	55.1	46.5	55.1	NO	95.5	2.0	78.7	76.4	
Q3	79.3	59.6	96.7	87.0	83.8	8.5	51.4	36.9	52.1	97.5	89.1	87.4	86.6	55.5	58.4	68.7	NO	98.5	0.5	86.8	80.9	
Q4	78.0	57.1	99.4	90.8	92.4	13.1	49.5	40.4	52.2	97.5	91.6	88.8	87.9	50.2	48.5	71.5	NO	99.5	0.6	92.1	82.0	
Q5	73.7	50.3	98.6	95.0	96.2	28.8	45.5	ND	56.6	99.4	93.0	89.2	81.9	45.9	49.8	82.8	NO	99.9	0.3	94.3	82.4	
Equity indicators																						
ratio Q5/Q1	1.1	1.0	1.1	1.3	2.3	20.7	0.7	ND	1.2	1.1	1.2	1.2	1.0	0.9	1.1	1.5	NO	1.2	0.0	1.6	1.2	
difference Q5 - Q1	3.6	0.4	10.0	23.8	54.1	27.4	-16.0	ND	8.2	10.4	14.5	16.4	-0.1	-5.6	5.7	26.6	NO	17.0	-9.6	34.1	14.7	
Concentration index	1.1	0.2	2.3	5.8	16.5	47.3	-6.6	9.2	2.2	2.1	3.8	4.0	0.5	-1.0	4.7	8.9	NO	3.4	-62.6	9.5	3.6	
SII	4.0	0.0	15.1	29.3	68.2	30.3	-19.7	16.8	5.9	13.7	19.5	20.5	2.5	-3.3	11.3	29.5	NO	27.9	-14.6	44.5	17.5	
Maternal education																						
none	55.5	29.3	61.5	42.3	16.9	1.9	71.5	24.8	27.7	60.9	33.8	36.1	71.0	ND	ND	ND	NO	NA	39.8	33.3	47.3	
primary	74.7	52.9	90.5	73.1	48.5	3.2	58.0	33.6	48.8	89.9	80.0	77.5	82.8	57.7	47.9	60.3	NO	NA	8.0	63.8	71.7	
secondary+	76.5	56.2	97.2	87.9	80.7	11.2	51.6	39.0	54.2	97.5	88.8	86.4	86.2	51.1	49.5	64.9	NO	NA	1.3	85.3	78.7	
Child's sex																						
male	NA	NA	95.6	83.8	73.5	9.6	53.1	36.1	53.4	95.2	87.0	82.8	84.1	53.4	48.9	63.4	NO	NA	3.5	79.6	NA	
female	NA	NA	95.3	84.9	72.0	9.1	53.2	37.0	52.2	95.6	85.4	84.9	86.4	51.5	49.4	64.3	NO	NA	3.3	79.9	NA	
Area of residence																						
urban	77.2	56.5	96.7	87.6	83.2	11.4	52.0	42.1	53.5	96.6	87.9	85.6	84.2	53.9	54.2	69.6	NO	98.6	1.9	84.6	79.8	
rural	74.7	53.8	94.2	81.3	63.6	7.6	54.2	33.6	52.2	94.3	84.6	82.2	86.2	51.4	45.0	59.7	NO	92.2	4.7	75.5	74.3	
Country region																						
01 National Capital Region	81.3	61.1	98.7	91.7	90.9	10.4	54.6	47.8	55.6	97.5	91.3	86.3	82.2	63.3	65.3	83.8	NO	100.0	0.6	90.7	85.4	
02 Cordillera Admin Region	83.1	61.2	98.1	82.9	85.4	15.6	57.9	ND	58.2	96.4	96.4	92.7	84.9	ND	ND	ND	NO	96.6	0.9	89.6	82.8	
03 I - Ilocos Region	73.9	54.4	97.4	78.4	90.0	11.5	59.7	ND	34.0	98.0	81.3	81.1	87.2	54.8	54.5	ND	NO	99.5	0.9	81.4	77.9	
04 II - Cagayan Valley	79.0	58.9	97.2	78.2	64.4	10.2	62.7	26.5	40.6	94.0	78.8	78.8	86.7	ND	ND	ND	NO	89.3	0.8	76.0	76.5	
05 III - Central Luzon	82.4	61.2	97.7	86.2	87.8	20.1	26.9	18.6	26.1	98.1	86.4	87.3	89.6	52.9	55.1	ND	NO	99.2	1.0	87.8	83.5	
06 IVA - CALABARZON	75.8	55.7	97.1	89.3	84.6	14.6	44.2	37.9	43.4	99.2	89.7	89.9	83.8	55.4	55.4	67.0	NO	98.1	0.6	85.8	80.3	
07 IVB - MIMAROPA	71.1	51.2	91.3	73.7	41.3	3.4	43.9	76.6	85.9	90.4	76.8	78.8	84.5	56.9	17.8	ND	NO	89.2	6.6	64.4	69.3	
08 V - Bicol	62.1	44.9	97.0	74.8	65.0	4.6	31.5	80.7	86.5	97.3	80.3	82.9	88.3	74.1	51.8	ND	NO	94.1	1.5	76.4	72.5	
09 VI - Western Visayas	73.4	55.4	97.9	89.7	67.8	6.6	74.5	49.0	67.3	99.0	89.8	89.8	83.9	46.8	51.0	66.7	NO	93.4	1.2	79.2	76.6	
10 VII - Central Visayas	74.1	54.8	98.4	90.3	80.9	6.5	71.4	24.1	77.8	96.8	86.0	87.1	90.7	46.9	50.1	60.6	NO	95.4	2.3	82.7	77.3	
11 VIII - Eastern Visayas	83.8	61.7	95.6	84.2	67.4	5.0	46.3	50.0	82.5	100.0	98.3	80.8	87.0	ND	ND	ND	NO	98.1	0.4	83.5	81.4	
12 IX - Zamboanga Peninsula	69.3	47.3	94.0	88.6	52.0	4.3	70.6	22.5	44.7	87.9	84.6	76.9	86.6	40.0	31.5	40.7	NO	91.4	6.2	72.8	66.7	
13 X - Northern Mindanao	71.5	50.7	94.6	86.4	63.3	5.9	51.3	42.9	60.4	94.7	85.4	81.4	91.4	ND	ND	ND	NO	97.0	4.7	80.3	69.5	
14 XI - Davao	75.4	53.8	97.6	85.9	67.7	8.8	63.1	9.3	49.3	97.4	92.1	88.2	83.7	38.7	41.9	ND	NO	88.7	1.6	78.2	75.2	
15 XII - SOCCSKSARGEN	78.7	57.5	91.6	74.9	55.7	5.7	57.5	29.7	44.5	89.6	86.6	77.6	86.8	60.9	39.1	57.7	NO	94.2	8.0	70.4	74.3	
16 XIII - Caraga	79.8	54.2	97.0	89.4	63.2	4.0	59.5	42.5	47.7	95.1	92.6	85.1	88.4	ND	ND	57.8	NO	93.9	2.4	79.9	73.7	
17 ARMM	46.5	23.9	52.8	39.1	20.4	2.3	52.3	14.4	20.1	59.9	36.3	43.5	61.4	55.6	48.1	ND	NO	67.9	38.5	24.3	44.5	

Note: the maximum number of interventions for the co-coverage indicator for this survey is 8



Source: Philippines (DHS 2003 & DHS 2013)

Coverage levels are shown for the poorest 20% (red circles) and the richest 20% (yellow circles). The longer the line between the two groups, the greater the absolute inequality. For quintiles with small sample sizes, estimates are not shown in the graphs.

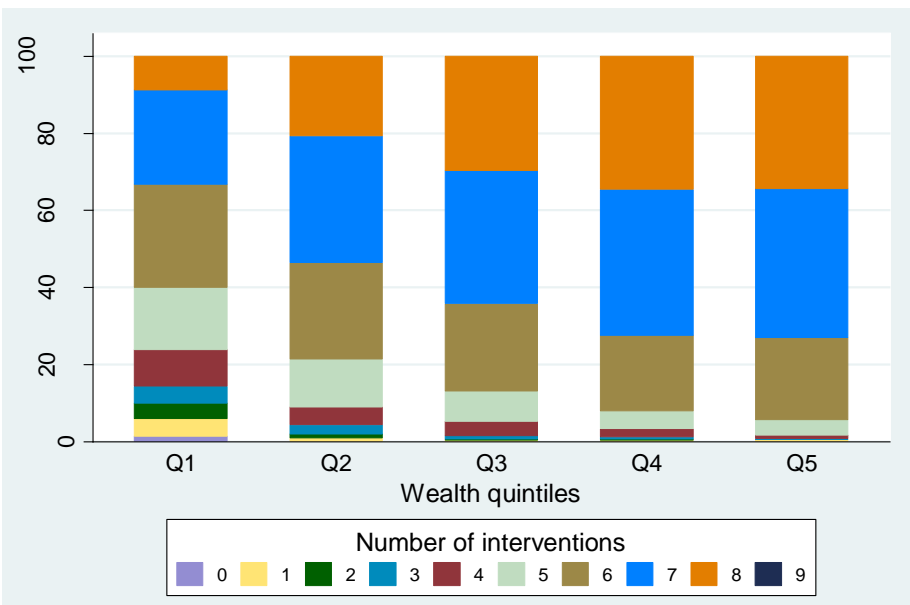


Source: Philippines (DHS 2003 & DHS 2013)

The horizontal lines connect the richest (yellow circles) and poorest (red circles) quintiles. The longer the line between the two groups, the greater the absolute inequality. For quintiles with small sample sizes, estimates are not shown in the graphs.

Figure 1 - Coverage levels in the poorest and richest quintiles for selected interventions along the continuum of care.

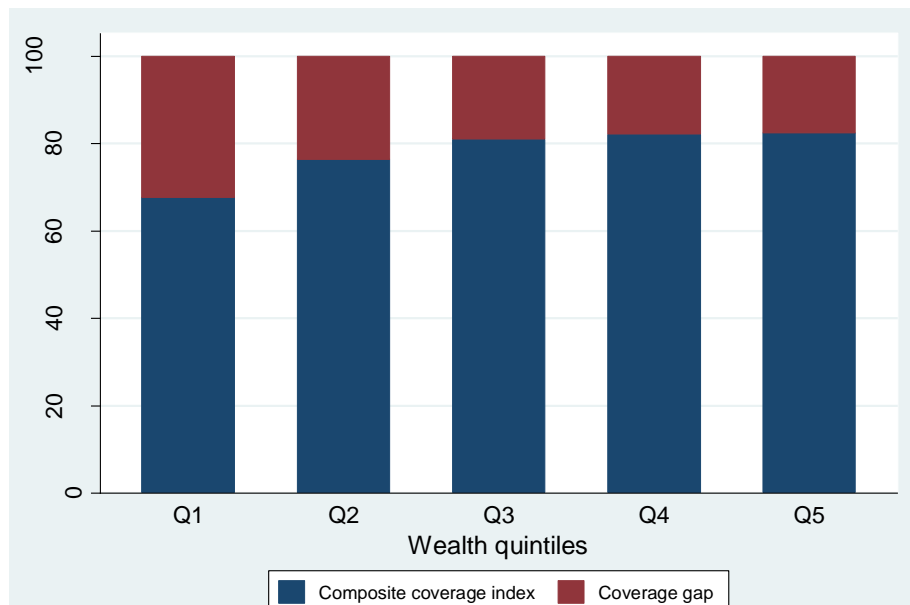
Figure 2 - Coverage levels in the five wealth quintiles for selected interventions along the continuum of care.



Source: Philippines DHS 2013

The maximum number of interventions for this survey is 8.

Figure 3 - Co-coverage of health interventions: percentage of children aged 1-4 years according to the number of key child-survival interventions received, by wealth quintile.



Source: Philippines DHS 2013

Figure 4 - Composite coverage of selected interventions and corresponding coverage gap (how much is needed to reach universal coverage), by wealth quintile.