

# Tuberculosis profile: Namibia

Population 2019: 2.5 million

## Estimates of TB burden\*, 2019

	Number	(Rate per 100 000 population)
Total TB incidence	12 000 (8 700-16 000)	486 (348-647)
HIV-positive TB incidence	3 900 (2 800-5 200)	158 (113-210)
MDR/RR-TB incidence**	840 (570-1 200)	33 (23-46)
HIV-negative TB mortality	1 400 (900-2 000)	57 (36-82)
HIV-positive TB mortality	1 300 (860-1 700)	50 (35-69)

## Estimated proportion of TB cases with MDR/RR-TB\*, 2019

New cases	5.8% (5-6.5)
Previously treated cases	12% (9.4-14)

## Universal health coverage and social protection\*

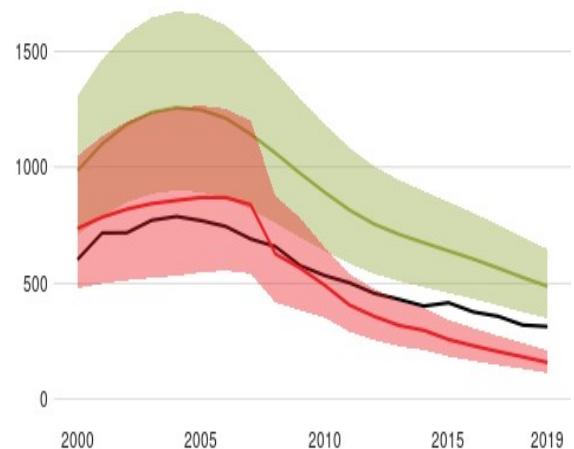
TB treatment coverage (notified/estimated incidence), 2019	64% (48-90)
TB patients facing catastrophic total costs	
TB case fatality ratio (estimated mortality/estimated incidence), 2019	23% (14-32)

## TB case notifications, 2019

Total new and relapse	7 801
- % tested with rapid diagnostics at time of diagnosis	47%
- % with known HIV status	95%
- % pulmonary	80%
- % bacteriologically confirmed ^	78%
- % children aged 0-14 years	10%

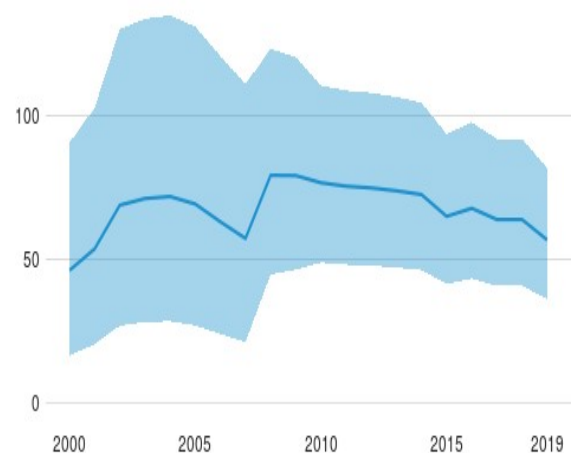
## Incidence, New and relapse TB cases notified, HIV-positive TB incidence

(Rate per 100 000 population per year)



## HIV-negative TB mortality

(Rate per 100 000 population per year)



## Incidence, Notified cases by age group and sex, 2019

(Number)

- % women	34%
- % men	56%
Total cases notified	8 016

## TB/HIV care in new and relapse TB patients, 2019

	Number	(%)
Patients with known HIV status who are HIV-positive	2 401	32%
- on antiretroviral therapy	2 371	99%

## Drug-resistant TB care, 2019

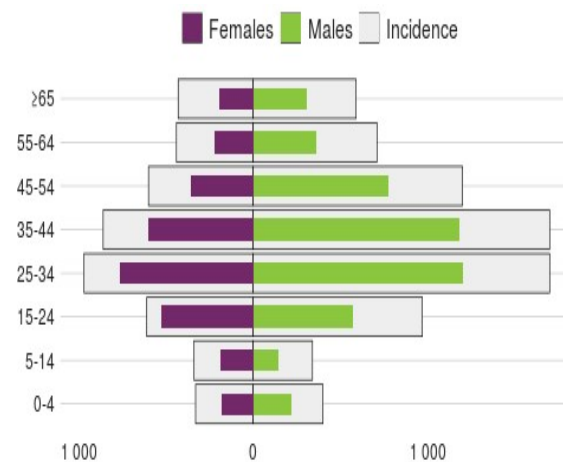
% of bacteriologically confirmed TB cases tested for rifampicin resistance - New cases ^	65%
% of bacteriologically confirmed TB cases tested for rifampicin resistance - Previously treated cases ^	61%
Laboratory-confirmed cases - MDR/RR-TB ^^	289
Patients started on treatment - MDR/RR-TB ^^	286
Laboratory-confirmed cases - XDR-TB ^^	4
Patients started on treatment - XDR-TB ^^	4
MDR/RR-TB cases tested for resistance to any fluoroquinolone	82

## Treatment success rate and cohort size

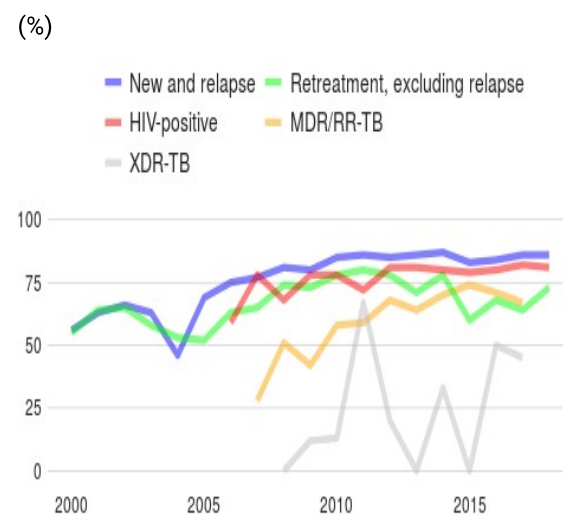
	Success	Cohort
New and relapse cases registered in 2018	86%	7 777
Previously treated cases, excluding relapse, registered in 2018	73%	291
HIV-positive TB cases registered in 2018	81%	2 768
MDR/RR-TB cases started on second-line treatment in 2017	67%	380
XDR-TB cases started on second-line treatment in 2017	45%	11

## TB preventive treatment, 2019

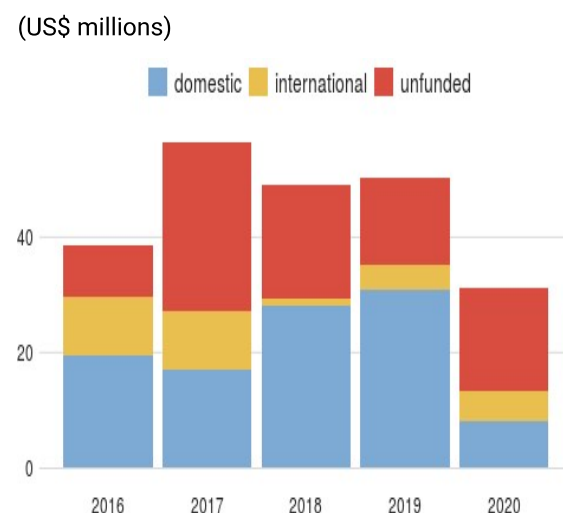
% of HIV-positive people (newly enrolled in care) on preventive treatment	61%
---	-----



## Treatment success rate



## Total budget



% of children (aged < 5) household contacts of bacteriologically-confirmed TB cases on preventive treatment	63% (58-69)
---	----------------

## TB financing

National TB budget, 2020 (US\$ millions)	31
- Funding source, domestic	26%
- Funding source, international	16%
- unfunded	58%

\* Estimates of TB and MDR-TB burden are produced by WHO in consultation with countries. Ranges represent uncertainty intervals.

\*\* MDR is TB resistant to rifampicin and isoniazid; RR is TB resistant to rifampicin

^ Calculated for pulmonary cases only

^^ Includes cases with unknown previous TB treatment history

^^^ Includes patients diagnosed before 2019 and patients who were not laboratory-confirmed

---

Generated 2020-10-15 by the World Health Organization (<https://www.who.int/tb/data/>)