

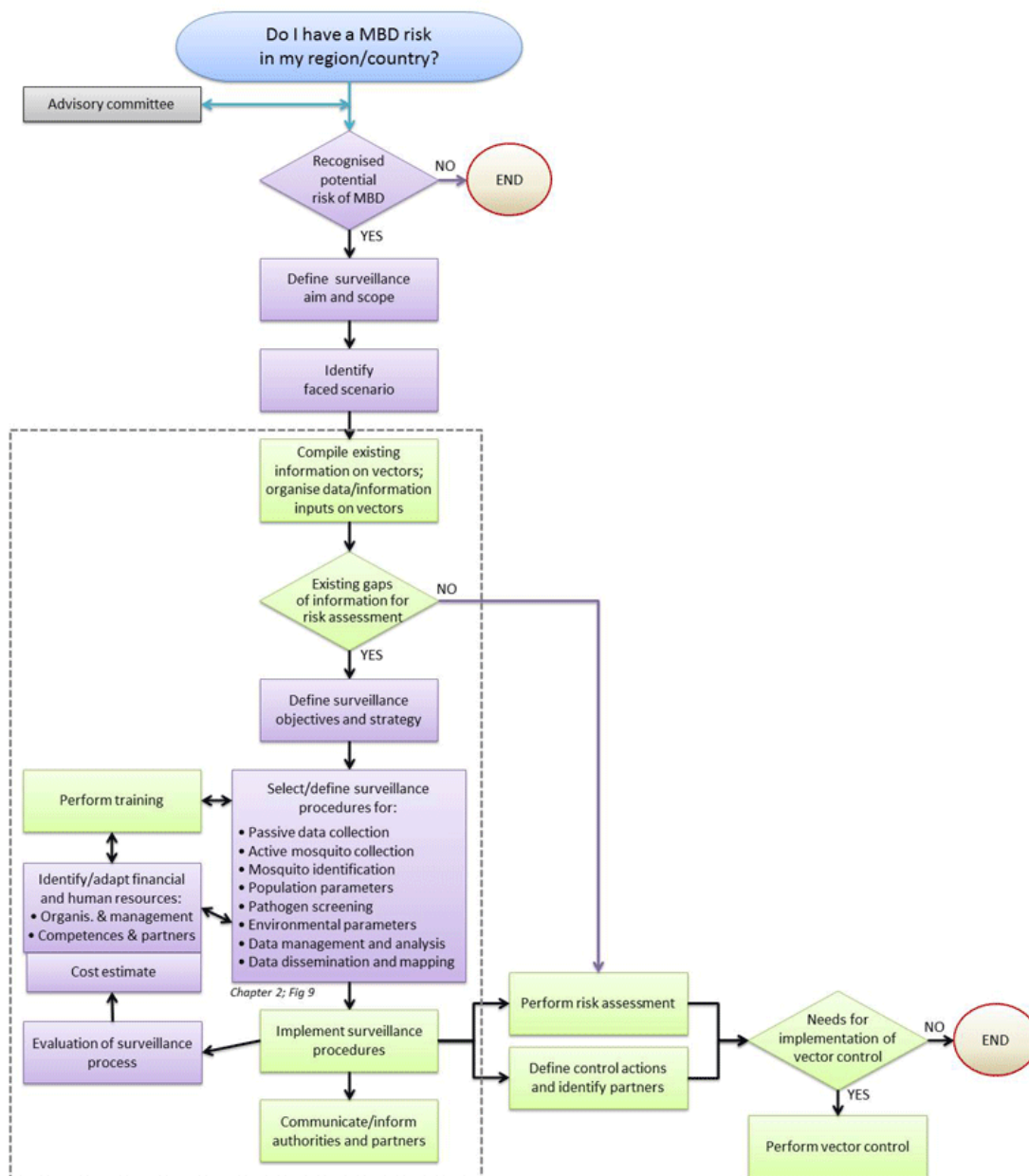


Portal Home > English > Health Topics > Vectors > Guidelines: Surveillance of invasive mosquitoes

Guidelines for surveillance of invasive mosquitoes in Europe

How to implement invasive-mosquito surveillance on the basis of mosquito-borne diseases risk in a country/region

To start, follow the flow and click on the highlighted boxes in the figure below [purple rectangles].
Or use the left menu to go to a particular step.



Could not render the url. Could not get image from url.Navigation timeout..