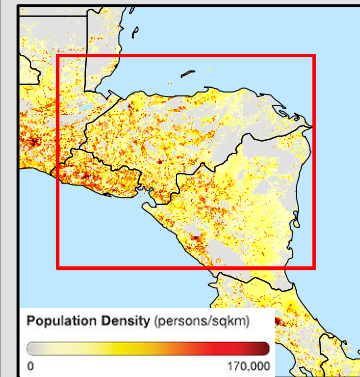
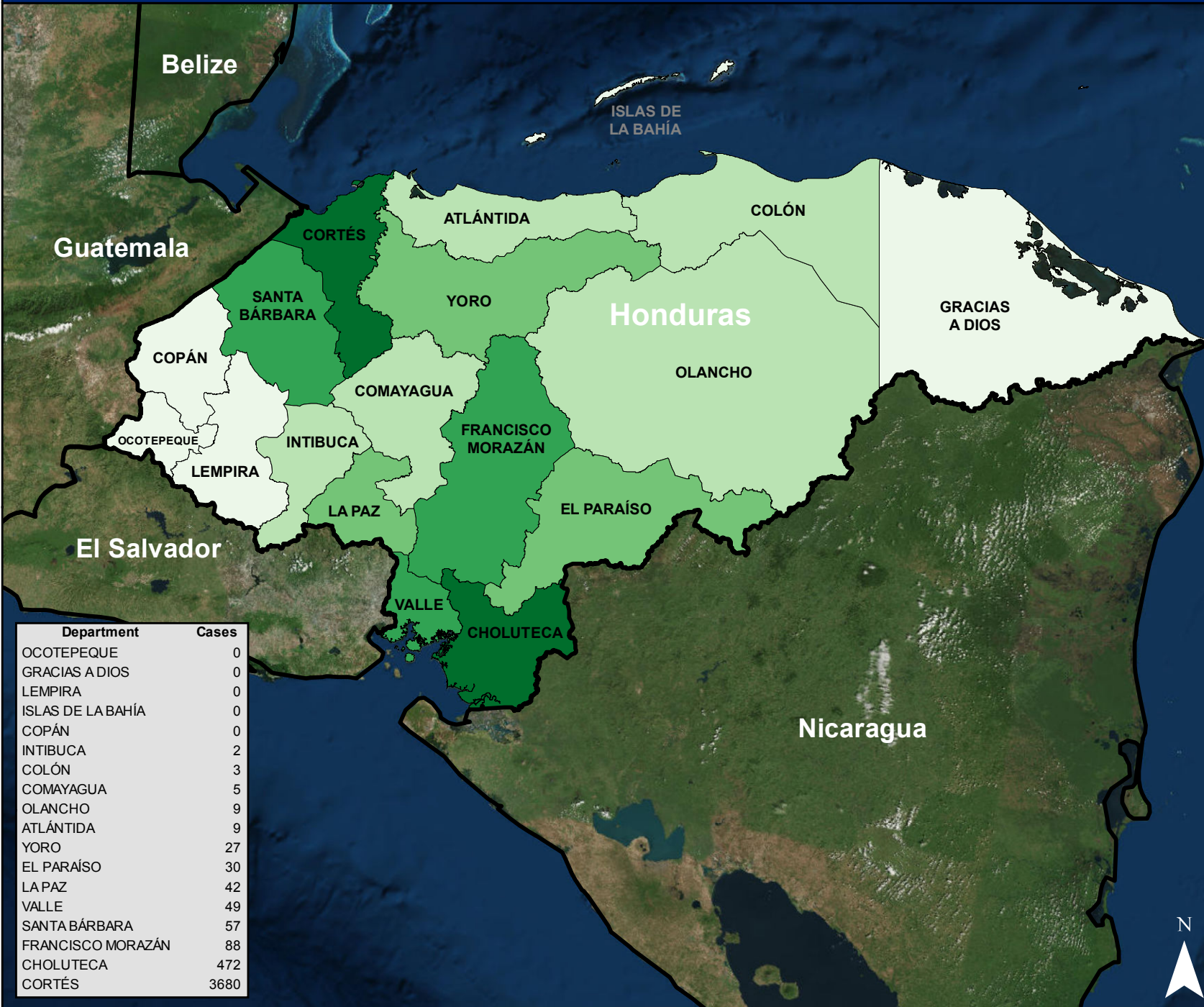
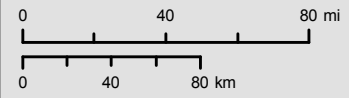
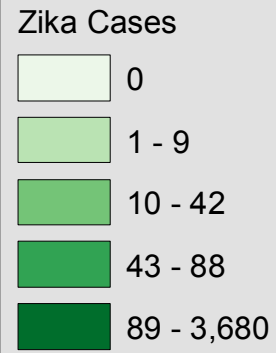


Honduras - Suspected Zika Cases by Department as of 30 January 2016

PDC - HNDZIKA001A



Department	Cases
OCOTEPEQUE	0
GRACIAS A DIOS	0
LEMPIRA	0
ISLAS DE LA BAHÍA	0
COPÁN	0
INTIBUCA	2
COLÓN	3
COMAYAGUA	5
OLANCHO	9
ATLÁNTIDA	9
YORO	27
EL PARAÍSO	30
LA PAZ	42
VALLE	49
SANTA BÁRBARA	57
FRANCISCO MORAZÁN	88
CHOLUTECA	472
CORTÉS	3680



Information regarding cases and transmission are based on Epidemiological Weeks 01-04 for 2016.

The delineation of political boundaries, and associated data shown here does not imply endorsement by the Pacific Disaster Center.

Produced By: PDC Disaster Services Team
 Product Created: 3/3/2016
 Data: Center of Disease Control, PAHO/WHO
 Other Data: ESRI, US Government, Oak Ridge National Laboratory
 Projection: Mercator Datum WGS84

<http://www.pdc.org> - response@pdc.org

