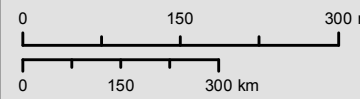
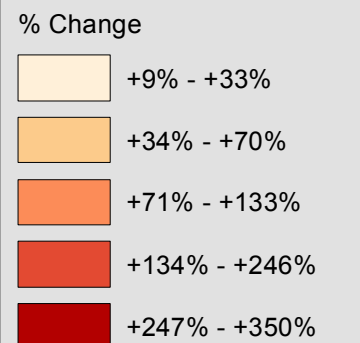
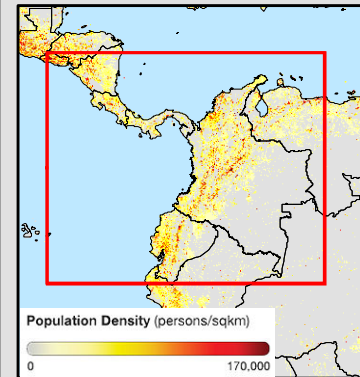
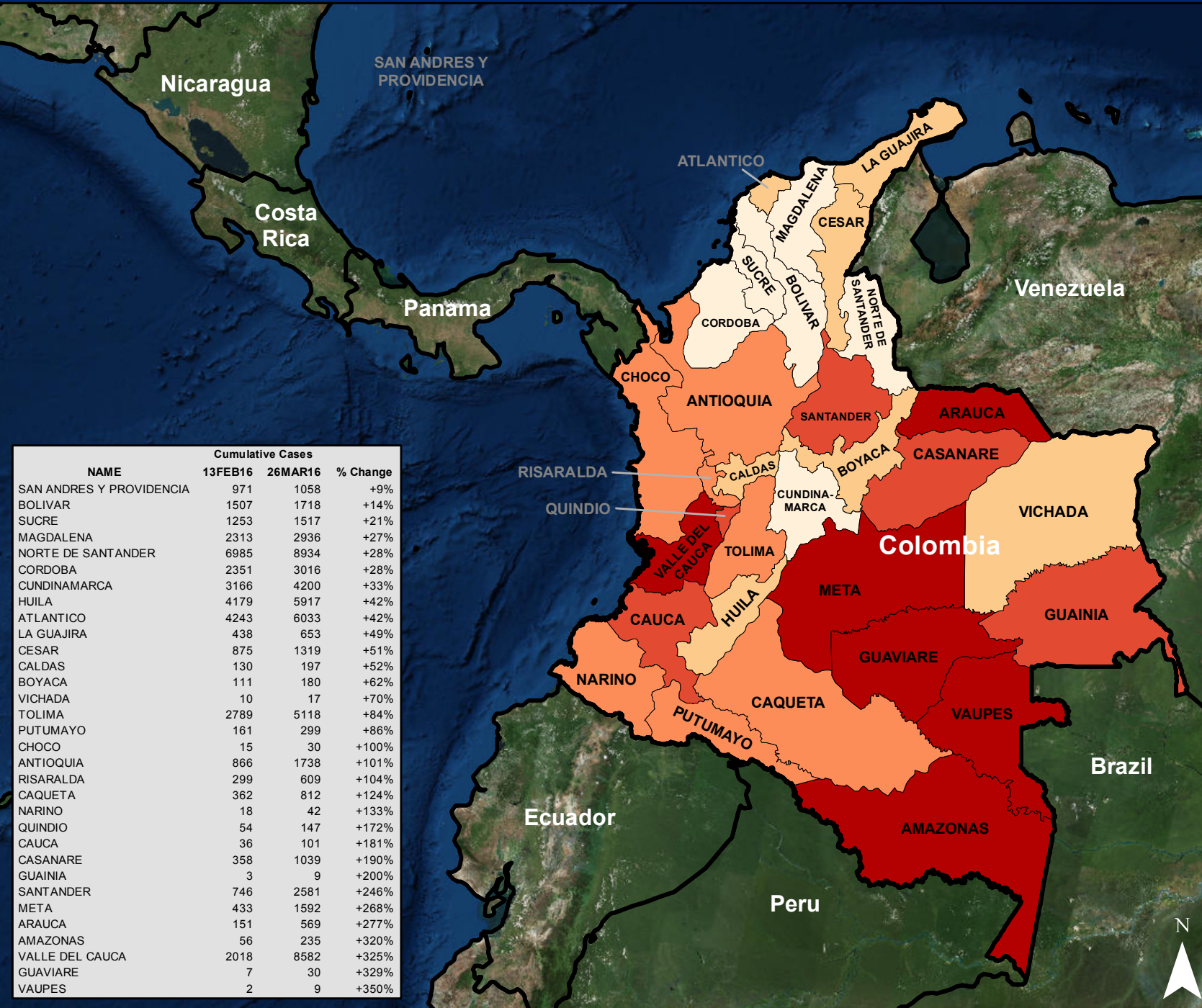


# Colombia - Percent Change in Cumulative Zika Cases by Department

## 13 February - 26 March 2016

PDC - COLZIKA003D



NAME	Cumulative Cases		% Change
	13FEB16	26MAR16	
SAN ANDRES Y PROVIDENCIA	971	1058	+9%
BOLIVAR	1507	1718	+14%
SUCRE	1253	1517	+21%
MAGDALENA	2313	2936	+27%
NORTE DE SANTANDER	6985	8934	+28%
CORDOBA	2351	3016	+28%
CUNDINAMARCA	3166	4200	+33%
HUILA	4179	5917	+42%
ATLANTICO	4243	6033	+42%
LA GUAJIRA	438	653	+49%
CESAR	875	1319	+51%
CALDAS	130	197	+52%
BOYACA	111	180	+62%
VICHADA	10	17	+70%
TOLIMA	2789	5118	+84%
PUTUMAYO	161	299	+86%
CHOCO	15	30	+100%
ANTIOQUIA	866	1738	+101%
RISARALDA	299	609	+104%
CAQUETA	362	812	+124%
NARINO	18	42	+133%
QUINDIO	54	147	+172%
CAUCA	36	101	+181%
CASANARE	358	1039	+190%
GUAINIA	3	9	+200%
SANTANDER	746	2581	+246%
META	433	1592	+268%
ARAUCA	151	569	+277%
AMAZONAS	56	235	+320%
VALLE DEL CAUCA	2018	8582	+325%
GUAVIARE	7	30	+329%
VAUPES	2	9	+350%

Information regarding cases and transmission are based on Epidemiological Weeks 01-12 for 2016. Total cases are laboratory confirmed and suspected Zika cases.

The delineation of political boundaries, and associated data shown here does not imply endorsement by the Pacific Disaster Center.

Produced By: PDC Disaster Services Team  
 Product Created: 4/5/2016  
 Data: Instituto Nacional De Salud  
 Other Data: ESRI, US Government, Oak Ridge National Laboratory  
 Projection: Mercator Datum WGS84

<http://www.pdc.org> - [response@pdc.org](mailto:response@pdc.org)