



## Sierra Leone Ebola Outbreak: Location & Status of Ebola Treatment Units and Daily Case Movement Totals for each District (as of 15 Mar 2015)

Map shows the location and status of the known Ebola Treatment Units. Daily case movement/numbers are shown for each district, with 7/14/21 day totals below.

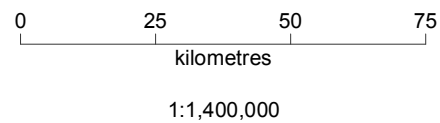
### Status, Is Lab Present?

- Open, Yes
- Open, No
- Under Construction, No
- Planned, No

### Cumulative Cases

- 0
  - 1- 25
  - 25 - 50
  - 50 - 75
  - 75 - 100
  - 100 - 125
- Please note the change in Classification ranges from previous days reflecting the higher case numbers

- ### Roads
- Primary
  - Secondary
- ### Borders
- National
  - Province
  - District



**Source**  
Ministry of Health, NERC briefings, OpenStreetMap

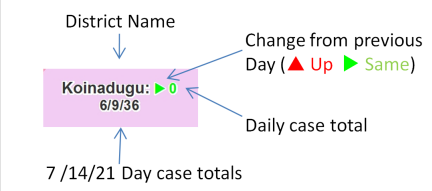
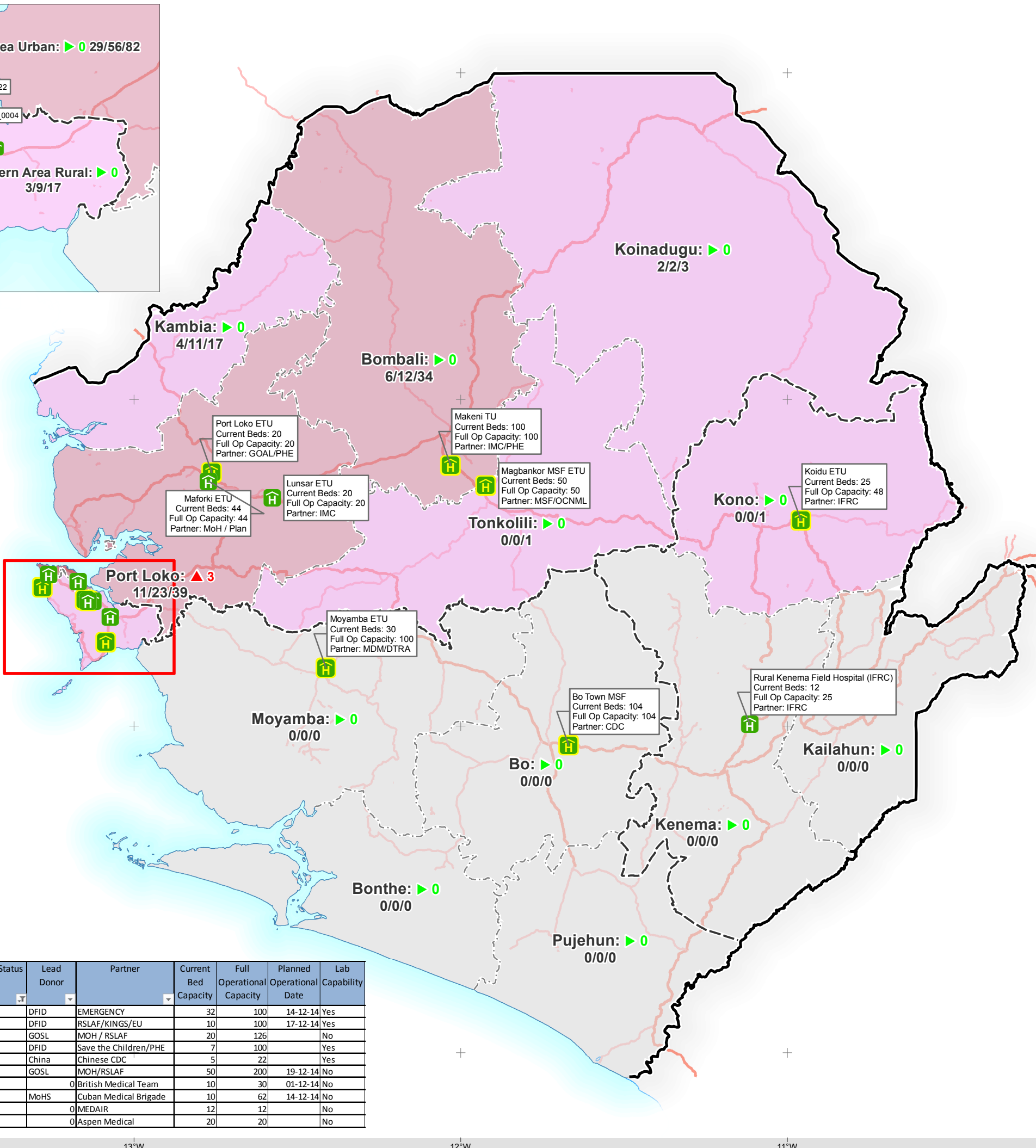
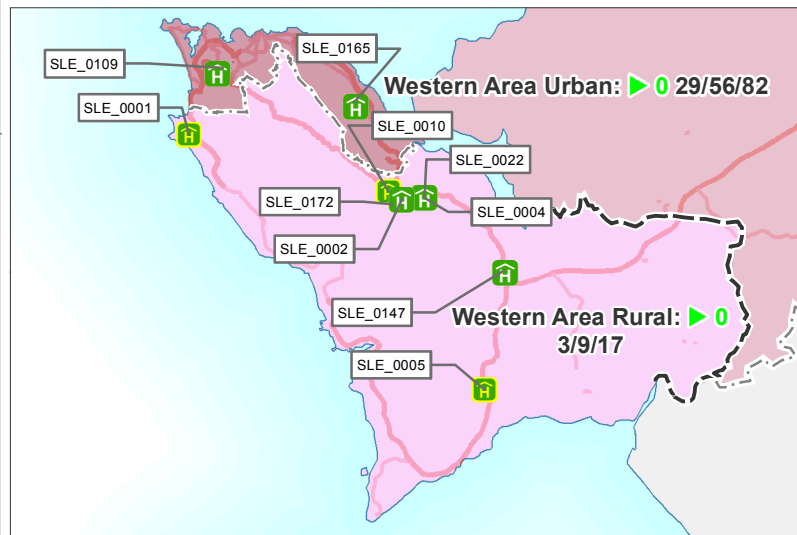
**Created** 17 Mar 2015

**Map Document** UNMEER009\_SLE\_EbolaCareFacilities\_v115

**Glide Number** EP-2015-000041-SLE

Produced by UNMEER/NERC: Contact [stevesesay.ss@gmail.com](mailto:stevesesay.ss@gmail.com) or [m.kargbo@integems.com](mailto:m.kargbo@integems.com) if you have any queries or data updates which can improve future products

The depiction and use of boundaries, names and associated data shown here do not imply endorsement or acceptance by the United Nations



### Western Area treatment facility details

NERC ECF ID	Facility Name	Type	Ebola Care Status	Lead Donor	Partner	Current Bed Capacity	Full Operational Capacity	Planned Operational Date	Lab Capability
SLE_0001	Goderich	ETU	Open	DFID	EMERGENCY	32	100	14-12-14	Yes
SLE_0002	Hastings	ETU	Open	DFID	RSLAF/KINGS/EU	10	100	17-12-14	Yes
SLE_0004	Police Training Sch-Hastings 1	ETU	Open	GOSL	MOH / RSLAF	20	126		No
SLE_0005	Kerry Town STC	ETU	Open	DFID	Save the Children/PHE	7	100		Yes
SLE_0010	China-SL Friendship Hospital ETU, Jul	ETU	Open	China	Chinese CDC	5	22		Yes
SLE_0022	Police Training Sch-Hastings 2	ETU	Open	GOSL	MOH/RSLAF	50	200	19-12-14	No
SLE_0109	34 Military Hospital	ETU	Open		British Medical Team	10	30	01-12-14	No
SLE_0147	ADRA	ETU	Open	MoHS	Cuban Medical Brigade	10	62	14-12-14	No
SLE_0165	Kuntolor	ETU	Open		MEDAIR	12	12		No
SLE_0172	Hastings Airfield	ETU	Open		Aspen Medical	20	20		No