

Why should I participate in *FAST*?

TB can potentially affect everyone, especially health care workers who provide direct care to TB patients on a daily basis.

Therefore, diagnosing and treating patients ***FAST*** will reduce your exposure and the possibility of being infected with TB.

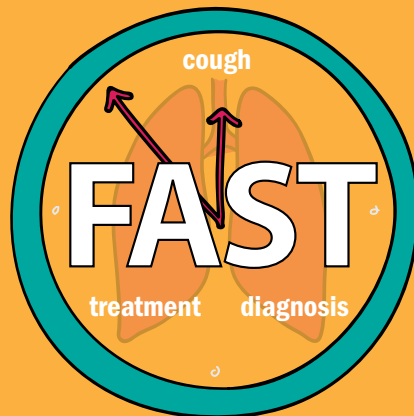
Your involvement in TB care must be ***FAST!***

For additional information about your country's TB infection control strategy, please contact your National Tuberculosis Program.

For more information on the ***FAST*** strategy, visit the TB CARE II website: <http://tbcare2.org>.



FAST FOR GENERAL MEDICAL SETTINGS



**Finding TB
Actively
Separating Safely
Treating Effectively**

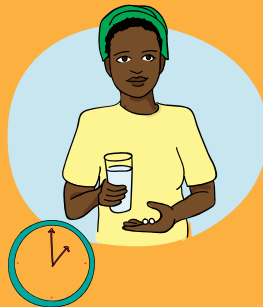


USAID
FROM THE AMERICAN PEOPLE

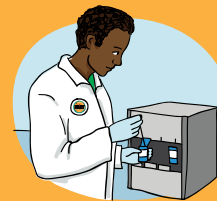
TB CARE II

What is *FAST*?

FAST is an infection control strategy that can prevent TB by emphasizing specific administrative infection control activities.



Remember: infection control activities are the ones that help to reduce exposure to disease, in this case, TB.

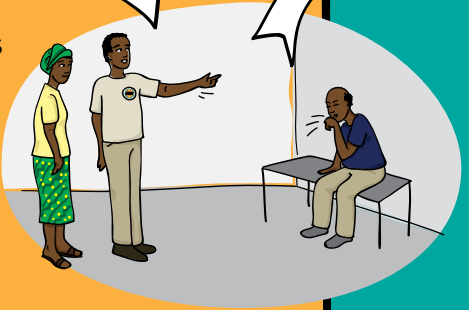


For ***FAST***, the infection control activities that are prioritized are rapidly diagnosing and putting patients on effective treatment.

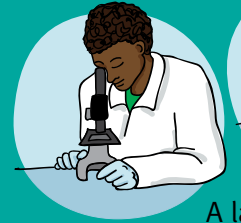


A patient enters the clinic and is greeted by a cough officer

The cough officer identifies coughers and separates them into an area away from other patients



The patient provides a sputum sample

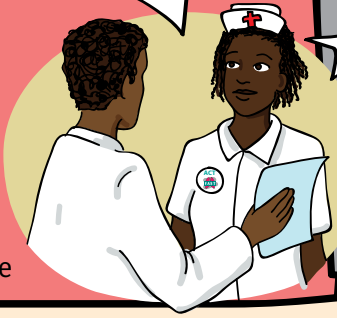


A lab technician examines the sputum sample for TB



A nurse separates the patient away from other patients after a sample is given to the lab

The lab technician gives the test result to the nurse



The nurse explains the test result to the patient

The patient starts effective TB treatment



FAST: Finding TB Actively, Separating Safely, Treating Effectively