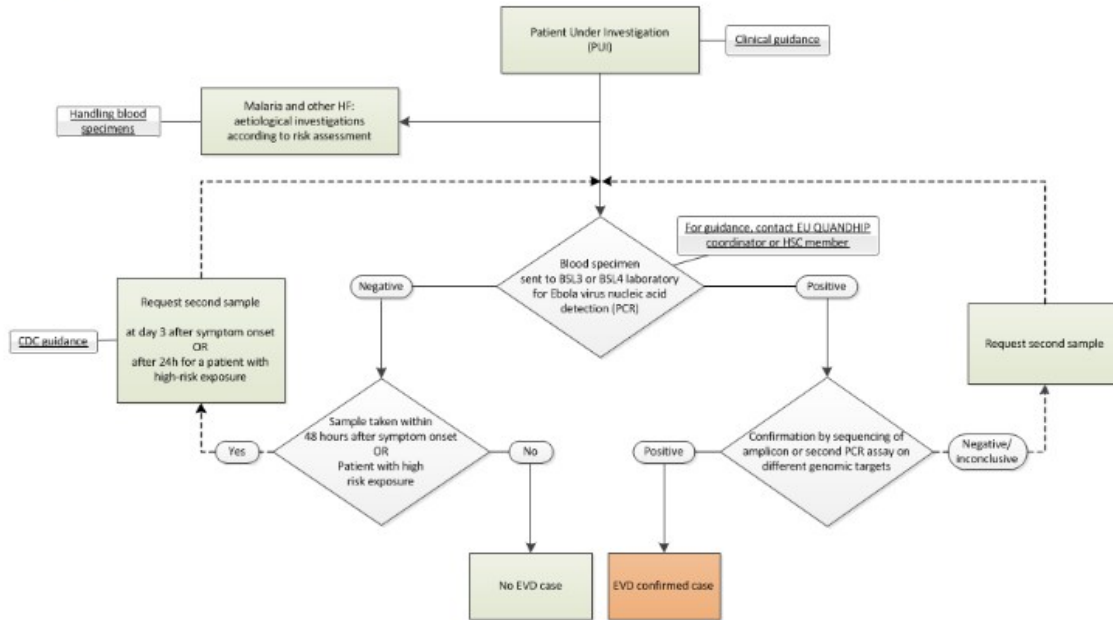


## Algorithm for laboratory diagnosis of Ebola virus disease

The algorithm for detection of Ebola virus nucleic acid in a clinical specimen indicates the steps required to consider a case as laboratory confirmed, as per laboratory criteria.



[Directory of guidance on EVD patient management](#)

[Additional information from QUANDHIP](#)

[Interim Guidance for Specimen Collection, Transport, Testing, and Submission for Patients with Suspected Infection with Ebola Virus Disease, CDC](#)