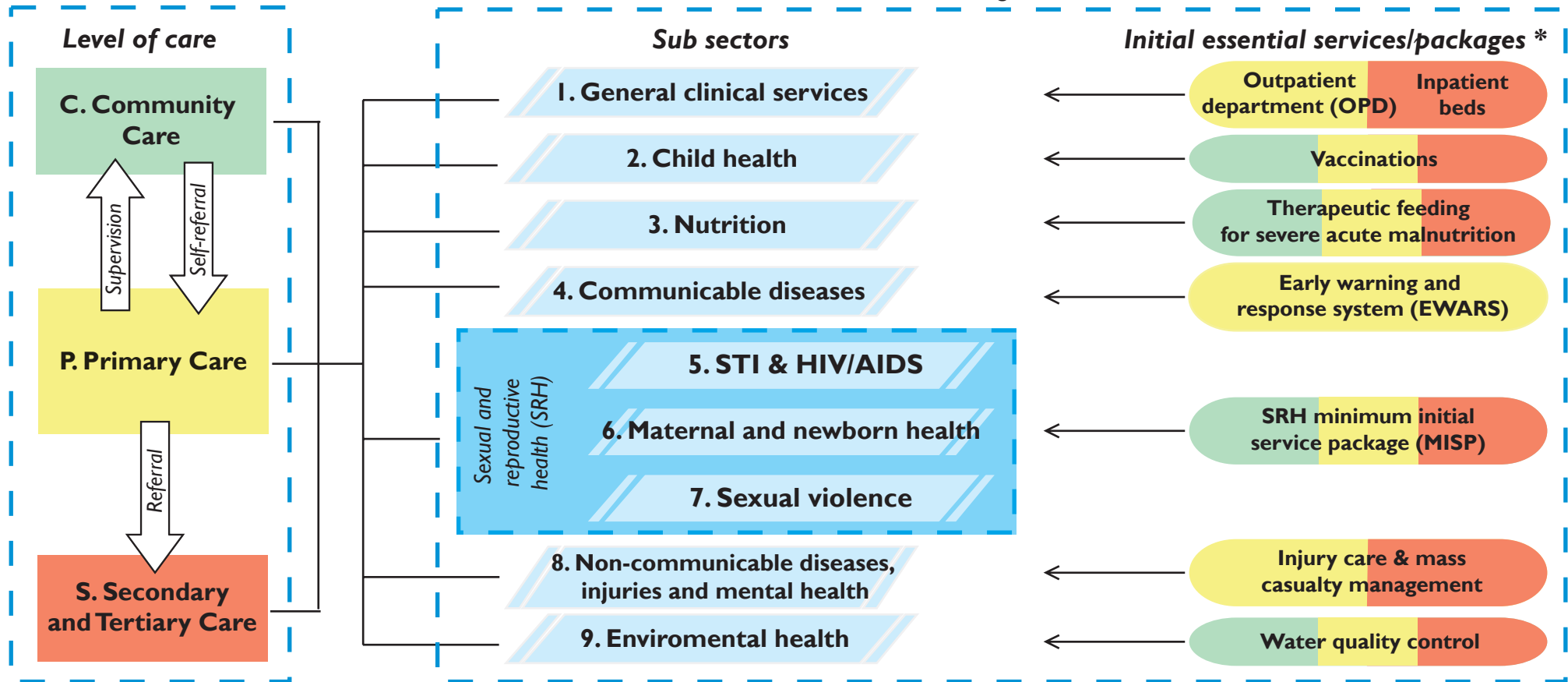


Health Resources Availability Mapping System (HeRAMS)

Who is Where and When?...

... Doing What?



What is *initial-HeRAMS*

The standard Health Cluster tool to be used during the first days/weeks of an acute crisis for the collection, collation and analysis of health sector information in affected areas, aggregated by administrative level (e.g. district or sub-district) on the number of active health partners, functioning health facilities (by type) and key health staff (physicians, nurses, midwives) as well as on the availability of initial essential health services.

What is *HeRAMS*

The standard Health Cluster tool that should be used as soon as possible and throughout the duration of a crisis for the collection, collation and analysis of health sector information for each facility, mobile clinic or site with community-based interventions in order to monitor the availability of resources. These are: key characteristics of the points of delivery (urban/rural area, IDP/refugee camp) and of the facilities (functioning/non functioning, temporary/permanent, active health partner(s), management, other), number of staff (by type) and availability of services as per the list of 62 services (see reverse).

*The indicated initial essential services or packages are intended as the minimum response that has to be present at the beginning of any crisis. The services proposed for child health, nutrition, communicable and non-communicable diseases and environmental health sub sectors may be changed with other priority service(s) as required by the nature of the crisis and/or the local context, for the other sub sectors the recommended services or packages should be in place in full before further expansion of the other services of the respective sub sectors.

IASC
Inter-Agency Standing Committee

Global Health Cluster

HEALTH SERVICES CHECK LIST

by level of care, by health sub-sectors, for health facility/mobile clinic/community-based interventions at each point of delivery

	Health sub sectors	Health Services (RH MISP Services in bold)	Y N		
C. Community Care	C0	Collection of vital statistics	C01	Deaths and births	
			C02	Others: e.g. population movements; registry of pregnant women, newborn children	
	C2	Child health	C21	IMCI community component: IEC of child care taker + active case findings	
			C22	Home-based treatment of: fever/malaria, ARI/pneumonia, dehydration due to acute diarrhoea	
			C23	Community mobilization for and support to mass vaccination campaigns and/or mass drug administration/treatments	
	C3	Nutrition	C31	Screening of acute malnutrition (MUAC)	
			C32	Follow up of children enrolled in supplementary/therapeutic feeding (trace defaulters)	
			C33	Community therapeutic care of acute malnutrition	
	C4	Communicable diseases	C41	Vector control (IEC + impregnated bed nets + in/out door insecticide spraying)	
			C42	Community mobilization for and support to mass vaccinations and/or drug administration/treatments	
C43			IEC on locally priority diseases (e.g. TB self referral, malaria self referral, others)		
C5	STI & HIV/AIDS	C51	Community leaders advocacy on STI/ HIV		
		C52	IEC on prevention of STI/HIV infections and behavioural change communication		
		C53	Ensure access to free condoms		
C6	Maternal & newborn health	C61	Clean home delivery , including distribution of clean delivery kits to visibly pregnant women, IEC and behavioural change communication, knowledge of danger signs and where/when to go for help, support breast feeding		
C8	Non communicable diseases, injuries & mental health	C81	Promote self-care, provide basic health care and psychosocial support, identify and refer severe cases for treatment, provide needed follow-up to people discharged by facility-based health and social services for people with chronic health conditions, disabilities and mental health problems		
C9	Environmental health	C91	IEC on hygiene promotion and water and sanitation, community mobilization for clean up campaigns and/or other sanitation activities		
P. Primary Care	P1	General clinical Services	P11	Outpatient services	
			P12	Basic laboratory	
			P13	Short hospitalization capacity (5-10 beds)	
			P14	Referral capacity: referral procedures, means of communication, transportation	
	P2	Child health	P21	EPI : routine immunization against all national target diseases and adequate cold chain in place	
			P22	Under 5 clinic conducted by IMCI-trained health staff	
			P23	Screening of under nutrition/malnutrition (growth monitoring or MUAC or W/H, H/A)	
	P3	Nutrition	P31	Management of moderate acute malnutrition	
			P32	Management of severe acute malnutrition	
	P4	Communicable diseases	P41	Sentinel site of early warning system of epidemic prone diseases, outbreak response (EWARS)	
			P42	Diagnosis and treatment of malaria	
			P43	Diagnosis and treatment of TB	
			P44	Other local relevant communicable diseases (e.g. sleeping sickness)	
	P5	STI & HIV/AIDS	P51	Syndromic management of sexually transmitted infections	
			P52	Standard precautions: disposable needles & syringes, safety sharp disposal containers, Personal Protective Equipment (PPE), sterilizer, P 91	
			P53	Availability of free condoms	
			P54	Prophylaxis and treatment of opportunistic infections	
			P55	HIV counselling and testing	
			P56	Prevention of mother-to-child HIV transmission (PMTCT)	
			P57	Antiretroviral treatment (ART)	
	P6	Maternal & newborn health	P61	Family planning	
			P62	Antenatal care: assess pregnancy, birth and emergency plan, respond to problems (observed and/or reported), advise/counsel on nutrition & breastfeeding, self care and family planning, preventive treatment(s) as appropriate	
			P63	Skilled care during childbirth for clean and safe normal delivery	
			P64	Essential newborn care: basic newborn resuscitation + warmth (recommended method: Kangaroo Mother Care - KMC) + eye prophylaxis + clean cord care + early and exclusive breast feeding 24/24 & 7/7	
			P65	Basic essential obstetric care (BEOC): parenteral antibiotics + oxytocic/anticonvulsant drugs + manual removal of placenta + removal of retained products with manual vacuum aspiration (MVA) + assisted vaginal delivery 24/24 & 7/7	
			P66	Post partum care: examination of mother and newborn (up to 6 weeks), respond to observed signs, support breast feeding, promote family planning	
			P67	Comprehensive abortion care: safe induced abortion for all legal indications, uterine evacuation using MVA or medical methods, antibiotic prophylaxis, treatment of abortion complications, counselling for abortion and post-abortion contraception	
	P7	Sexual violence	P71	Clinical management of rape survivors (including psychological support)	
			P72	Emergency contraception	
			P73	Post-exposure prophylaxis (PEP) for STI & HIV infections	
P8	Non communicable diseases, injuries & mental health	P81	Injury care and mass casualty management		
		P82	Hypertension treatment		
		P83	Diabetes treatment		
		P84	Mental health care: support of acute distress and anxiety, front line management of severe and common mental disorders		
P9	Environmental health	P91	Health facility safe waste disposal and management		
S. Secondary & Tertiary Care	S1	General clinical services	S11	Inpatients services (medical, paediatrics and obstetrics and gynaecology wards)	
			S12	Emergency and elective surgery	
			S13	Laboratory services (including public health laboratory)	
			S14	Blood bank service	
			S15	X-Ray service	
	S2	Child health	S21	Management of children classified with severe/very severe diseases (parenteral fluids and drugs, O2)	
	S6	Maternal & newborn health	S61	Comprehensive essential obstetric care: BEOC + caesarean section + safe blood transfusion	
	S8	Non communicable diseases, injuries & mental health	S81	Disabilities and injuries rehabilitation	
S82			Outpatient psychiatric care and psychological counselling		
S83			Acute psychiatric inpatient unit		